

## Download link for the correct Canon 2900 driver for Windows 32-bit and 64-bit computers.

The Canon 2900 driver helps the printer operate stably. However, finding the installation files can be difficult. Free Downloads has compiled download links for popular operating systems, helping you quickly install and use your printer.

The Canon 2900 driver acts as a bridge between the computer and the printer, transmitting information to enable the printer to function effectively. If the driver is not installed correctly, you may encounter errors such as the printer not receiving commands, printing in incorrect sizes, or not printing at all.

**Download link for Canon 2900 Full Drivers for various operating systems.**



### Troubleshooting errors when installing Canon 2900 drivers

During the installation process, you may encounter some errors such as:

- Incompatible driver error: Ensure you download the correct version of Windows.
- Corrupted driver error: Re-download the file from the official website.
- The printer is not recognized by the driver: Try changing the USB port or reconfiguring it in the Control Panel.

If you don't know **how to install the Canon 2900 driver**, you can refer to the article we've provided; we guarantee 1000% success.

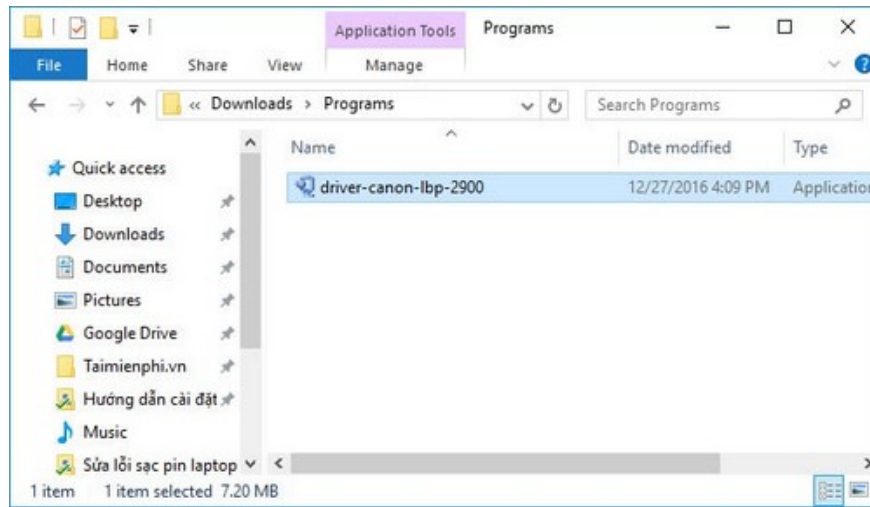
# Instructions for installing the Canon 2900 printer on Windows

## System requirements

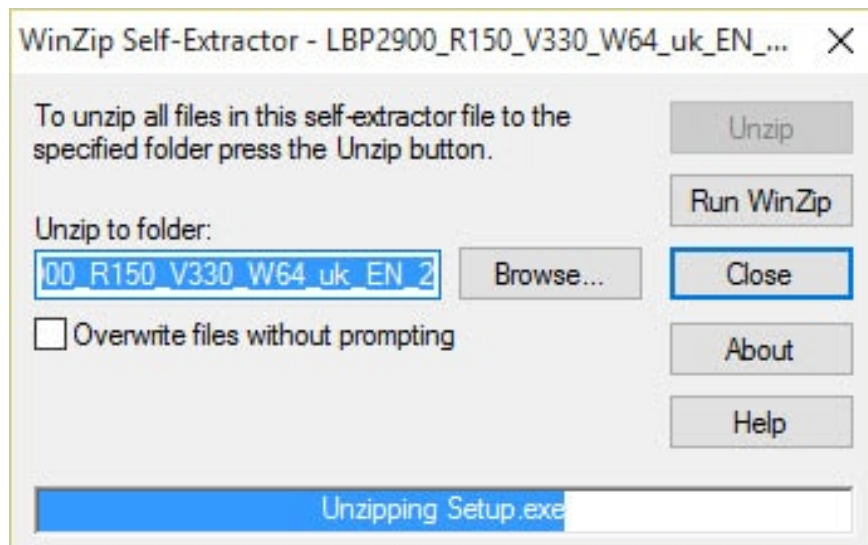
1. Computers running Windows XP/Vista/7/8/8.1/10/11
2. Canon LBT 2900 printer
3. Cable connecting the printer and the computer

**Step 1:** Download the printer installer from the link above.

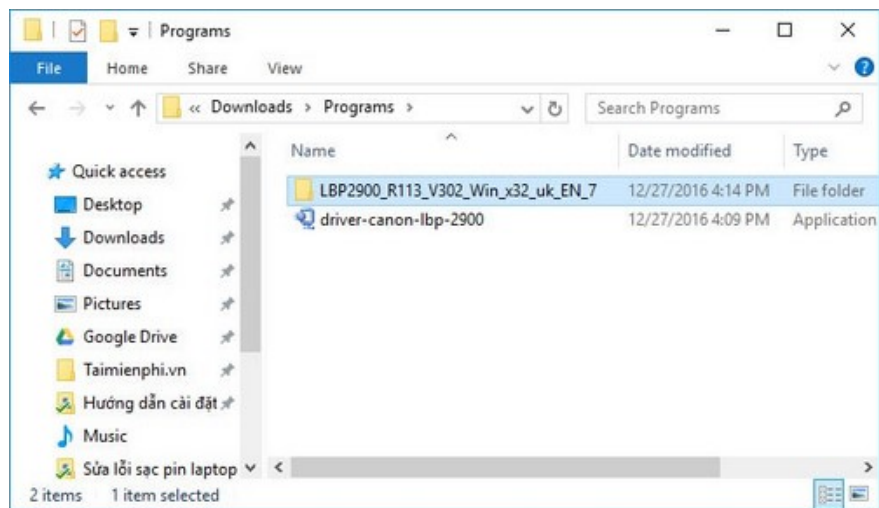
**Step 2:** After downloading, click directly to open the file.



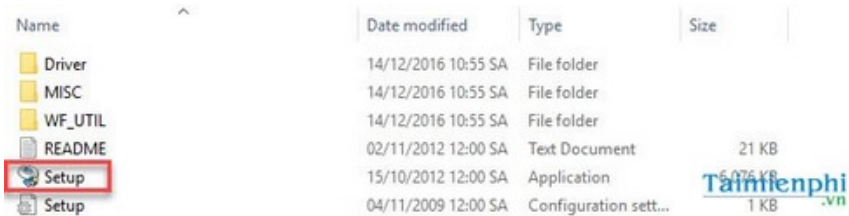
- Click on **Run Winzip**



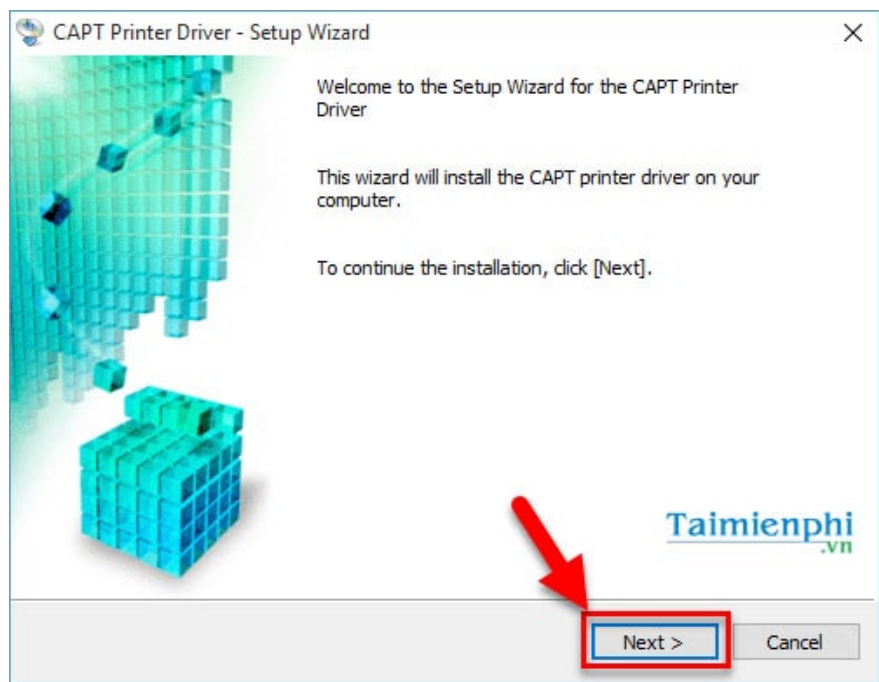
**Step 3:** The file will automatically extract to another folder; go to that folder.



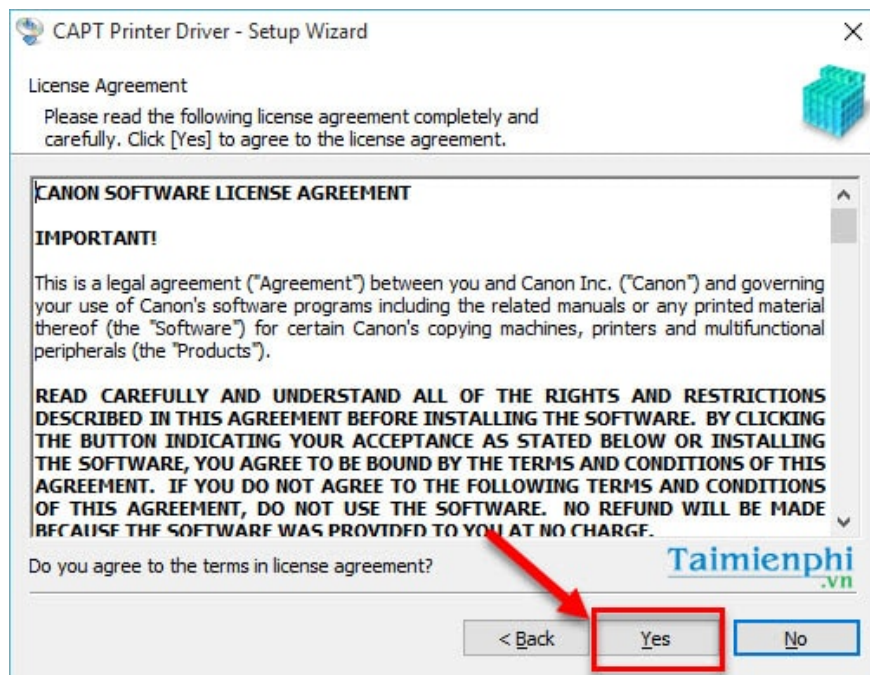
- Select the **Setup.exe file**



**Step 4:** Click **Next** to begin the installation process.



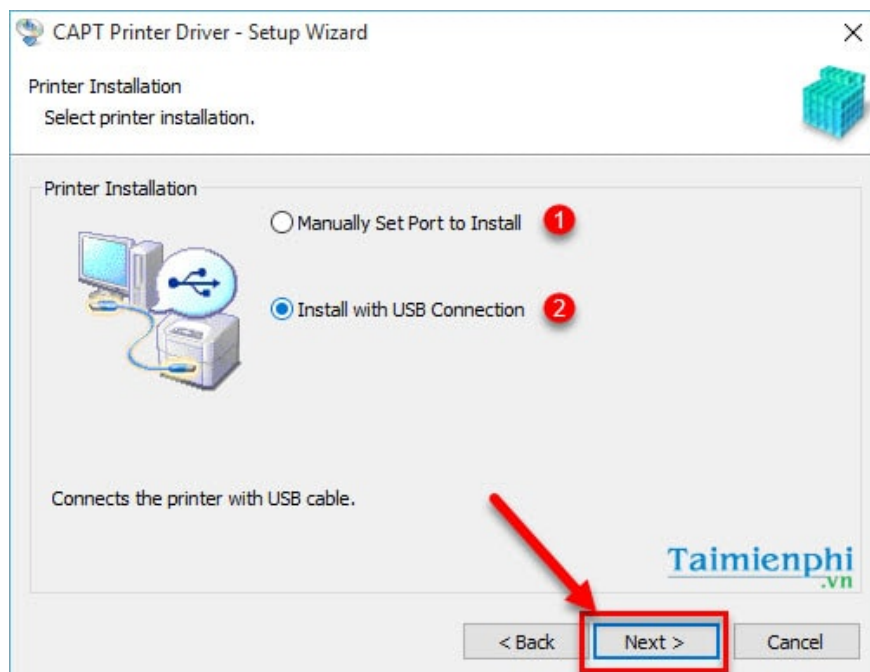
**Step 5:** Click **Yes** to agree to the terms of use and continue the installation process.



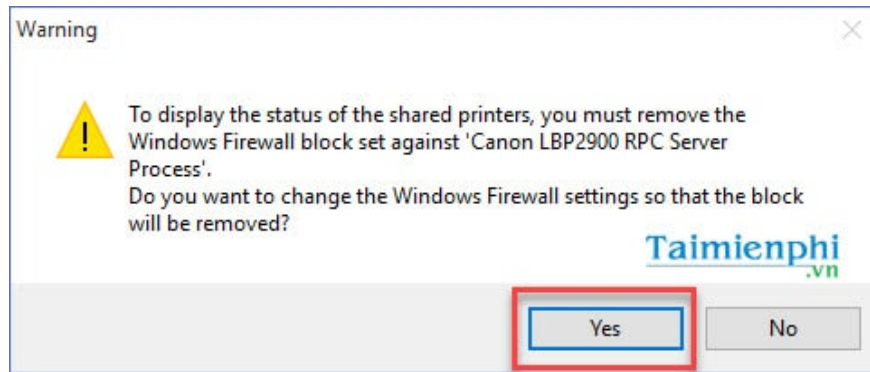
**Step 6:** You need to choose one of the following two methods

- (1) **Manually Set Port to Install:** Install via network port using a custom method
- (2) **Install with USB Connection:** Install via direct wired connection.

Here, if you are connecting the printer to your computer via cable, select **the second installation method ( Install with USB Connection )** and click **Next** to continue.

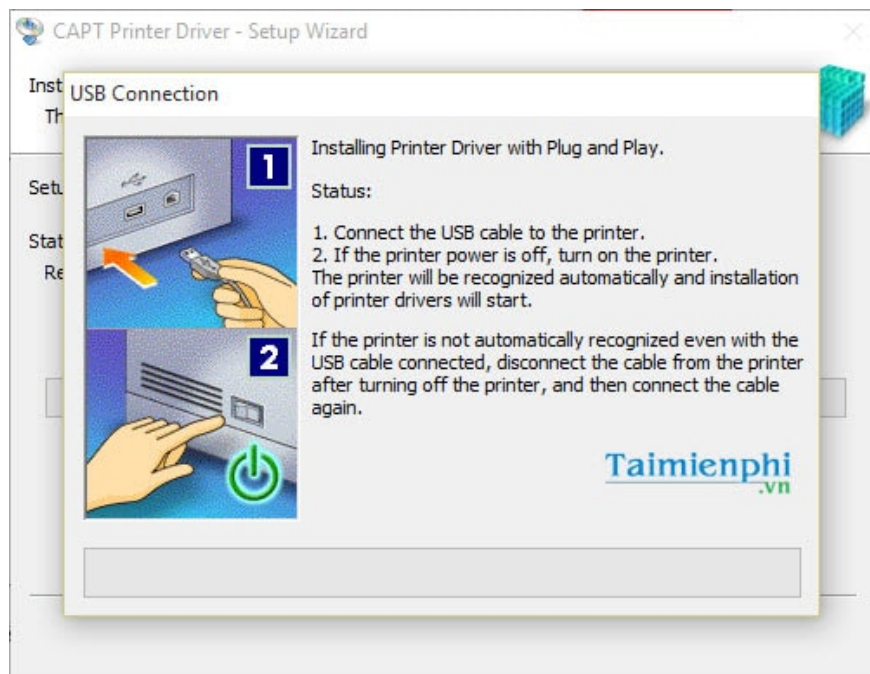


**Step 7:** A firewall warning will appear for the printer; click **Yes** to continue.

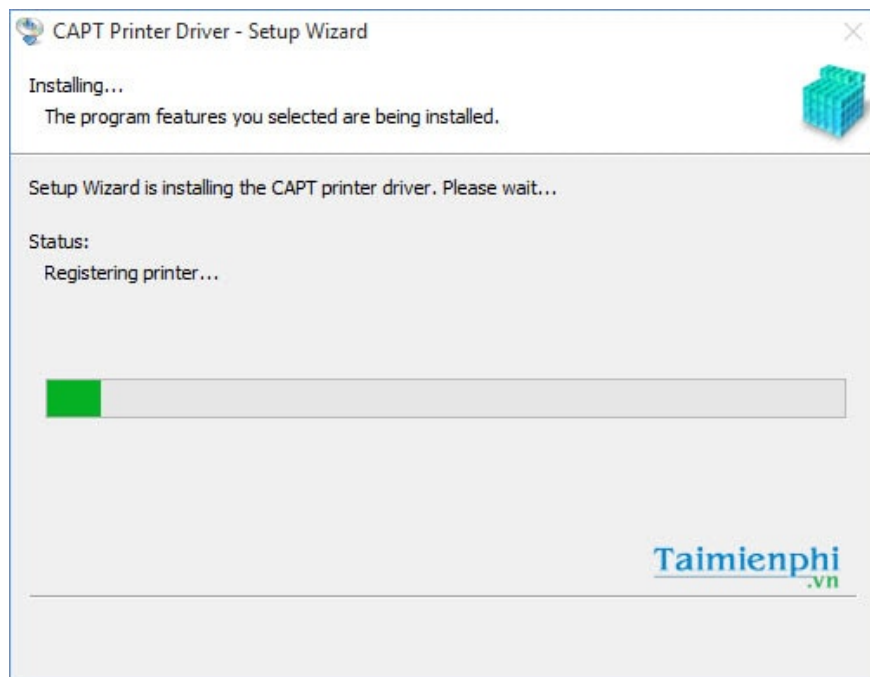


**Step 8:** The process of establishing a connection between the printer and the computer via USB will begin. Use the cable to connect the computer and printer so the driver can check compatibility and start the installation.

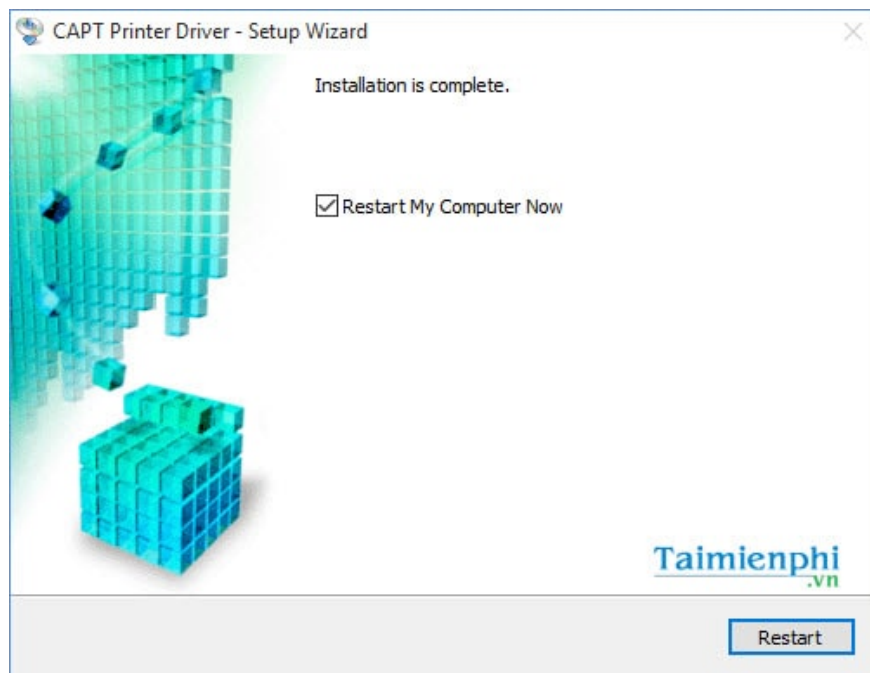
**- Note:** If the printer does not automatically recognize the connection even after plugging in the cable, please unplug the cable from the printer, then turn off the printer, plug the cable back in, and restart the process. If it still doesn't work, check the connection cable.



**Step 9:** After a successful connection, the Canon 2900 driver will begin installing on your computer.



**Step 10:** The installation process is complete. Click **Restart** to restart your computer.

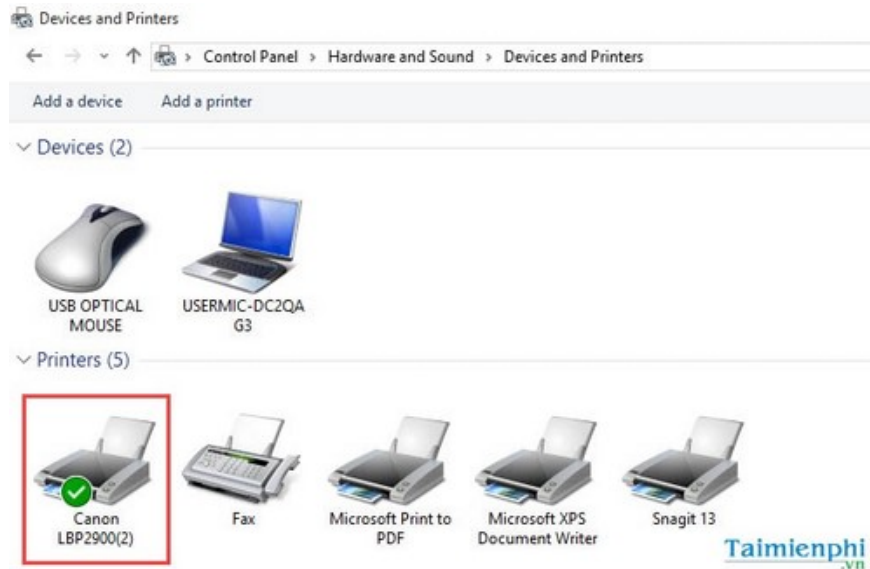


**Step 11:** After restarting your computer, keep the computer connected to the printer, then check if the printer has recognized the driver.

- Go to **Control Panel > Hardware and Sound > Devices and Printers**

- In the list of printers, if you see the Canon 2900 LBP printer icon with a green checkmark, it means the Canon 2900 LBP driver has been successfully installed on your computer.

- To print, simply **open the file** => press **Ctrl+P** => select **Canon 2900 LBP** under **the Target Printer** and **print** as usual.



## How to install a Canon 2900 printer on a Macbook

Installing a Canon 2900 printer on a MacBook requires downloading the appropriate driver and manually configuring it in the system. To make it easier for you and avoid printer recognition errors, I've written a detailed guide in this article on installing Canon 2900 on a MacBook .

You finished reading the article "**Download link for the correct Canon 2900 driver for Windows 32-bit and 64-bit computers.**" edited by the [TipsMake](#) team. We hope this article has provided you with many useful tech tips and tricks. You can search for similar articles on tips and guides. Thank you for reading and for following us regularly.