

Display BIOS information on Windows 10 using Command Prompt

On Windows 10 you can view BIOS information using the Command command. If you want to print or just want to see how much your BIOS version is, there is no need to install any 3rd party tool or use the traditional method of rebooting the computer.

On Windows 10 you can view BIOS information using the Command command. If you want to print or just want to see how much your BIOS version is, there is no need to install any 3rd party tool or use the traditional method of rebooting the computer.

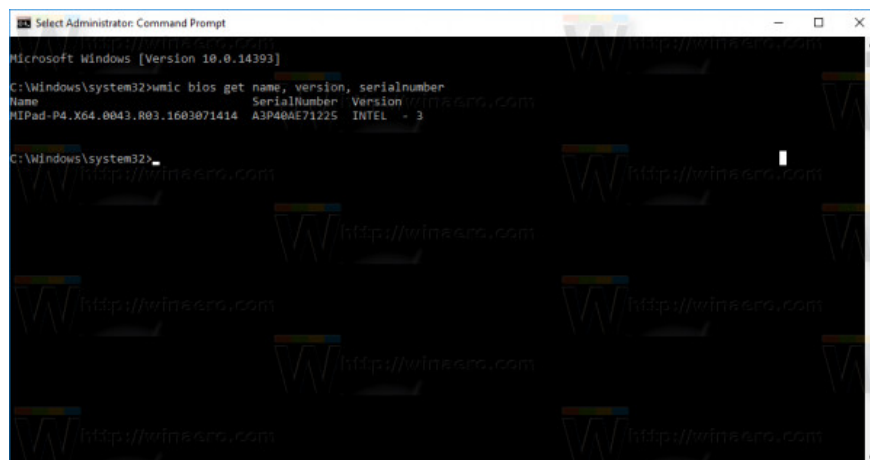
View BIOS information on Windows 10 device using Command Prompt

To see BIOS information on a Windows 10 device, follow the steps below:

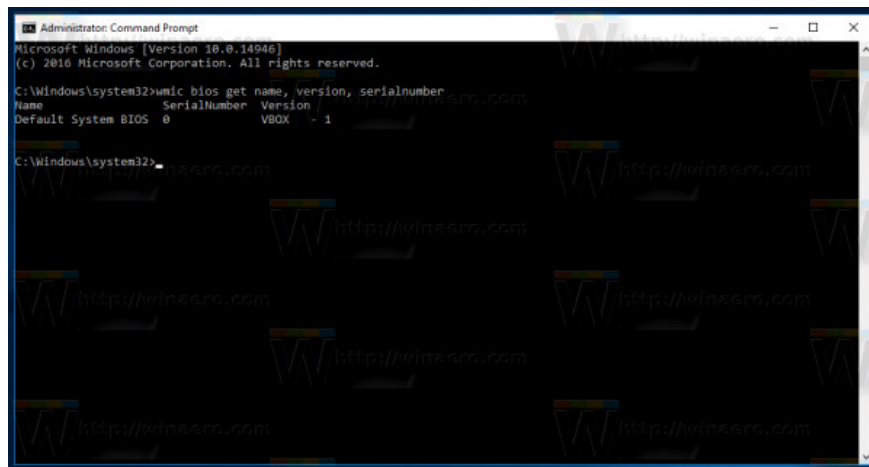
1. Open Command Prompt under Admin by right-clicking on the **Start** button on the Taskbar, selecting **Command Prompt (Admin)**.
2. On the Command Prompt window, enter the following command into:

```
wmic BIOS get name, version, serialnumber
```

Now the command will display the output:



The following example is from a virtual machine on VirtualBox:



```
Administrator: Command Prompt
Microsoft Windows [Version 10.0.14946]
(c) 2016 Microsoft Corporation. All rights reserved.

C:\Windows\system32>wmic bios get name, version, serialnumber
Name          SerialNumber  Version
Default System BIOS  0             VBOX - 1

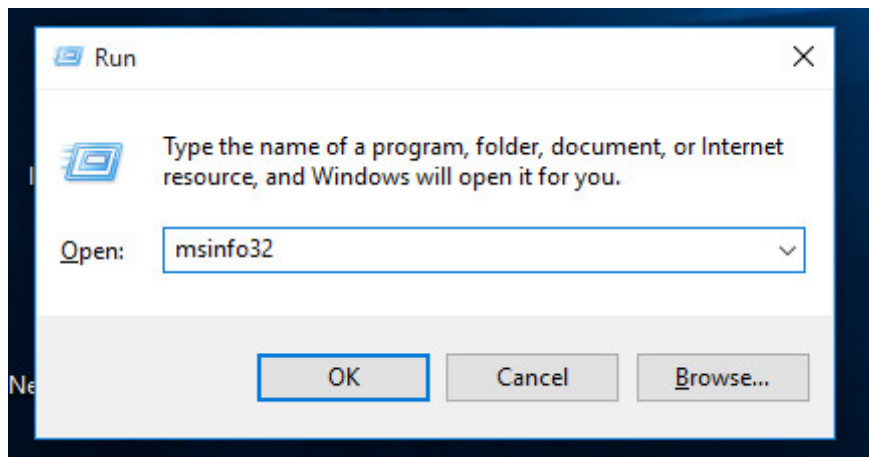
C:\Windows\system32>
```

This trick cannot replace 'powerful' applications like AIDA64 or HWiNFO, but it is also a good solution to view information quickly without having to install any 3rd party application. It can use automated scripts if needed.

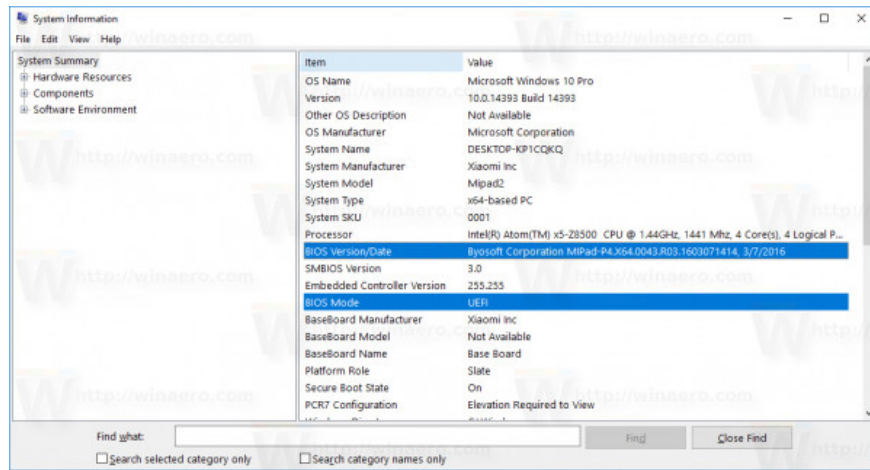
If you have to use GUI tools, you can view BIOS information through the system's built-in System Information tool. You can also tell if Windows 10 is running in UEFI mode or Legacy BIOS mode. To do this thing:

1. Press **Windows + R** key combination to open the Run command window, then enter the following command into the Run window:

msinfo32



2. At this time, the System Summary window is displayed, where you find the version / day BIOS and BIOS mode in the right pane.



Refer to some of the following articles:

1. 3 simple ways to reset BIOS settings
1. This is why you should turn off or use the Webcam tape immediately
1. Instructions for setting up BIOS and UEFI passwords to protect data on your Windows 10 computer safely

Good luck!

You finished reading the article "**Display BIOS information on Windows 10 using Command Prompt**" edited by the [TipsMake](#) team. We hope this article has provided you with many useful tech tips and tricks. You can search for similar articles on tips and guides. Thank you for reading and for following us regularly.