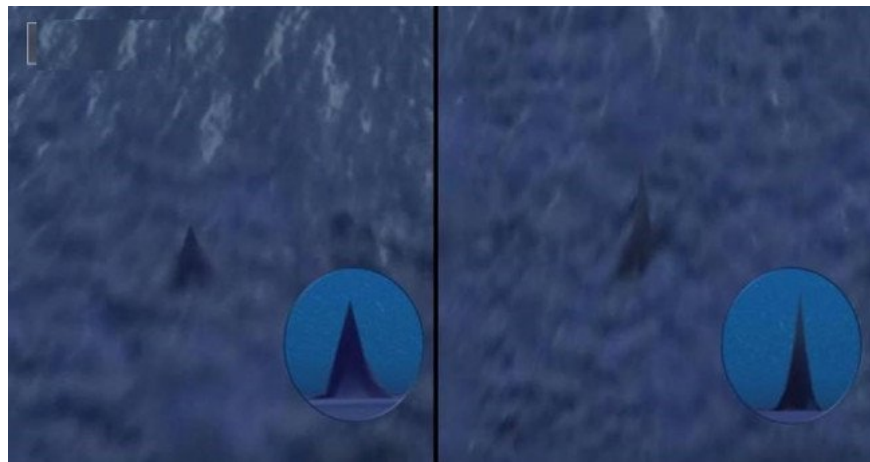


Discovering the pyramid off New York?

Recently, the Google Earth application has discovered two strange pyramid-like structures beneath the Atlantic Ocean, 200km off New York (USA).

Recently, the **Google Earth** application has discovered **two strange** pyramid-like **structures** beneath the Atlantic Ocean, 200km off New York (USA).

From the captured Google Earth image, two strange structures were built in tower form, like **pyramids** , hundreds of meters tall, and standing about 45km apart.



Two pyramids that Google Earth detected under the sea.

These two great pyramids stand separate from the seabed and are most likely built by humans, unlike natural structures.

It seems that these two pyramids are in opposition to **the Giza pyramid** in Egypt and **the Sun pyramid** in Mexico. 2 undersea pyramids correspond to 2 pyramids on the ground.

Discover 2 mysterious pyramids off New York?

Perhaps these two pyramids are also in the network of great structures built by the ancient people in a straight line and opposite to each other throughout the five continents that we have not known because they have sunk deep into the sea. .

You finished reading the article "**Discovering the pyramid off New York?**" edited by the [TipsMake](#) team. We hope this article has provided you with many useful tech tips and tricks. You can search for similar articles on tips and guides. Thank you for reading and for following us regularly.

