

Discovering 'alien antenna' on the Moon?

What is the mysterious object on the Moon? UFO hunters claim to have found alien antennas on the Moon. Invite you to find out!

1. "Alien skeleton" found in Peru is real?
2. Is life on Mars captured? UFOs and aliens 'found' on Red planet
3. UFOs found in Russia also contain "bodies of aliens"?

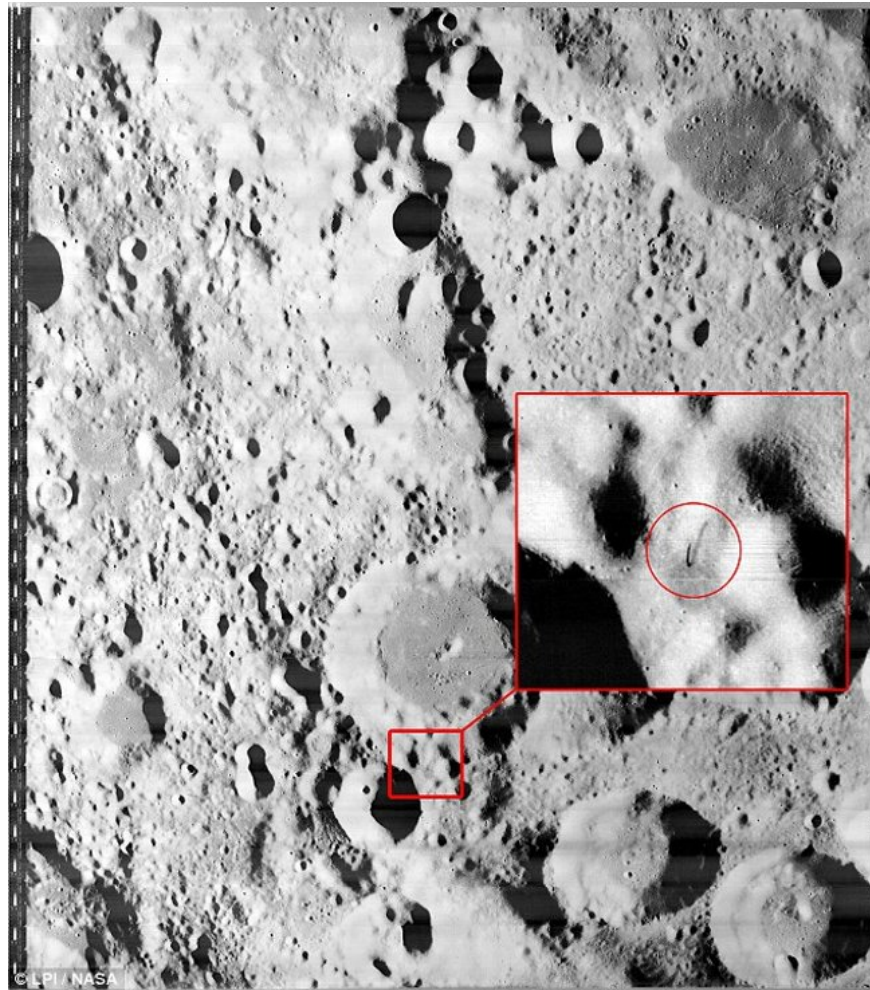
What is the mysterious object on the Moon? UFO hunters claim to have found " *alien antennae* " on the Moon. Invite you to find out!

A strange object that looks like an antenna is found on the surface of the Moon, surprising the astronomers.

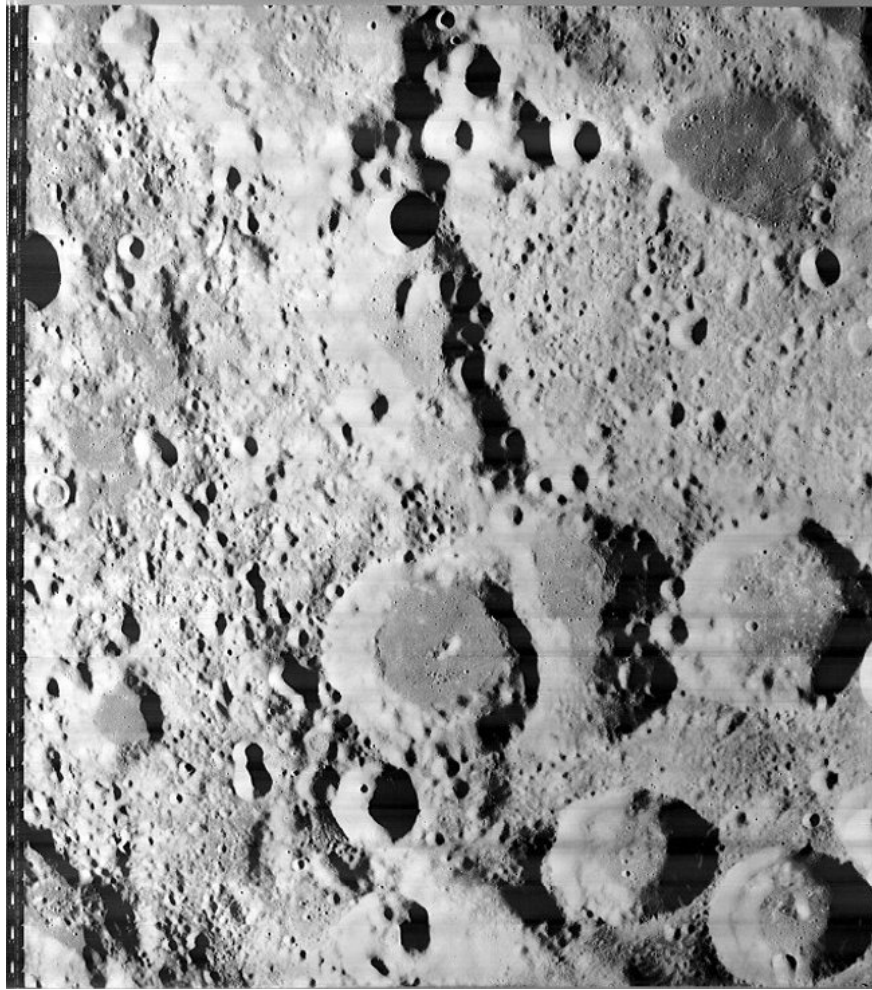
An alien hunter announces that he has discovered another mysterious object on the Moon.

Mark Sawalha , a UFO hunter in Finland, discovered a " *strange sharp object* " in NASA's moon surface photograph.

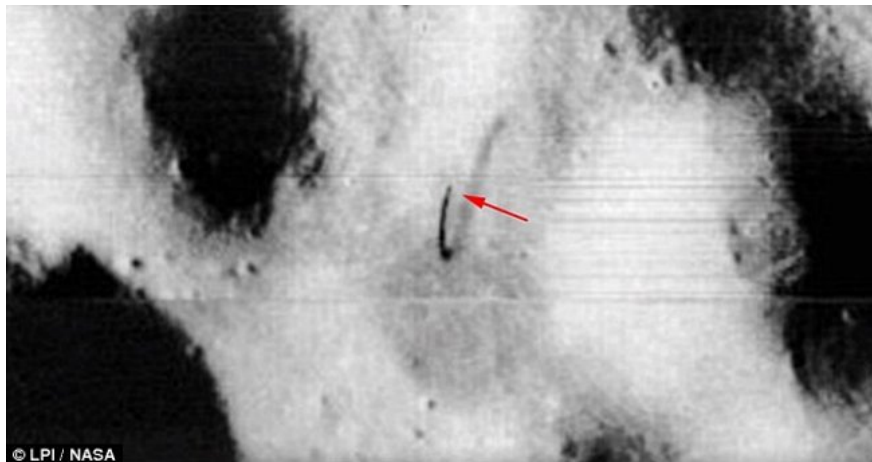
Mark Sawalha thought that ' *alien antenna* ' could be placed on the roof of a radio base that was operating underground under the Moon's surface in that area. Or it could be a base for extraterrestrial mining on the Moon.



Enlarging the image appears to show that the strange sharp object Mark Sawalha considered a sign of extraterrestrial life on the Moon.



The original image of the Moon was taken by NASA's Lunar Orbiter.



According to Mark Sawalha, 'alien antennas' can be placed on top of a certain radio base on the Moon.

Why do we see special things on the Moon?

Pareidolia is a psychological phenomenon that makes people have a tendency to "see" faces and artifacts that are formed from details of things that are completely unrelated to them.

Sometimes, someone may **suddenly see one or more faces** on objects or locations that are difficult to appear such as clouds, lakes or even the Moon.

This phenomenon is also called "*face hallucination*", when **a region in the brain is awakened** to analyze and identify faces from images obtained from the eye. This kind of illusion happens to anyone, even the "*face-to-face*" scientists for them.

In aerospace, one of the most common things is the '*human face on Mars*' discovered by one of the Viking ships in 1976.

' *Aliens are using Moon minerals and they also base there. Many other findings support this theory* , 'said **Sawalha** .

Although he did not specify what the findings were, UFO hunters announced that NASA knew about them and chose not to give it.

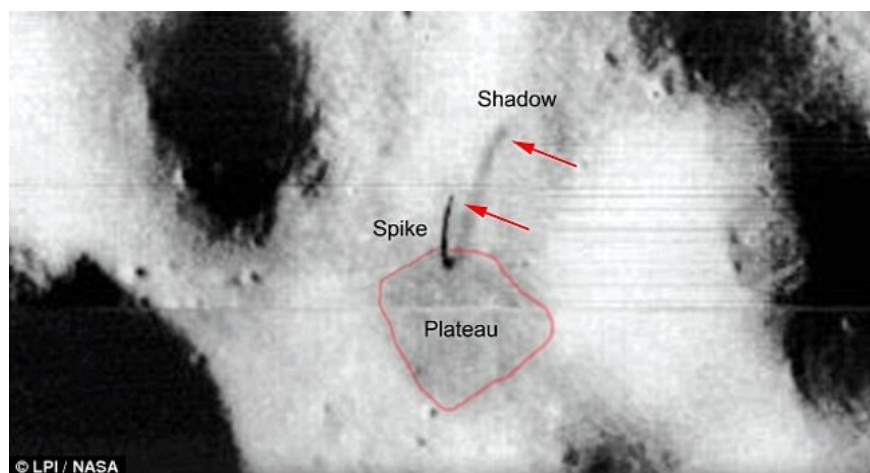
He also surmised that the presence of aliens on the lunar surface could be the reason NASA didn't send any spacecraft that has humans to Earth satellites since the Apollo missions.

Along with the mysterious antenna-like object, when zoomed in the image also shows a "*clear plateau*" underneath the antenna.

Sawalha said: "*Finding out the alien anomalies (mechanical structures, houses, etc.) on the solar system is a new problem for me . I have been interested in this topic later. When I find strange structures on my NASA image, I'm sure these findings are real, we still have a lot of things to learn from nearby planets and what happens. there* ".

However, an expert said that the so-called "*alien antenna*" is not just an optical illusion. **Nigel Watson** , author of the **UFO Investigations Manual** , told *MailOnline* : "*In this case the vertical hill is more likely to cause darkness, sometimes a hill with a lake or cliff on the side. must* ".

" *There are many other explanations that are not related to alien intervention, but enthusiasts are always eager to jump in to learn anything unusual and build them in alien dreams. their* '.

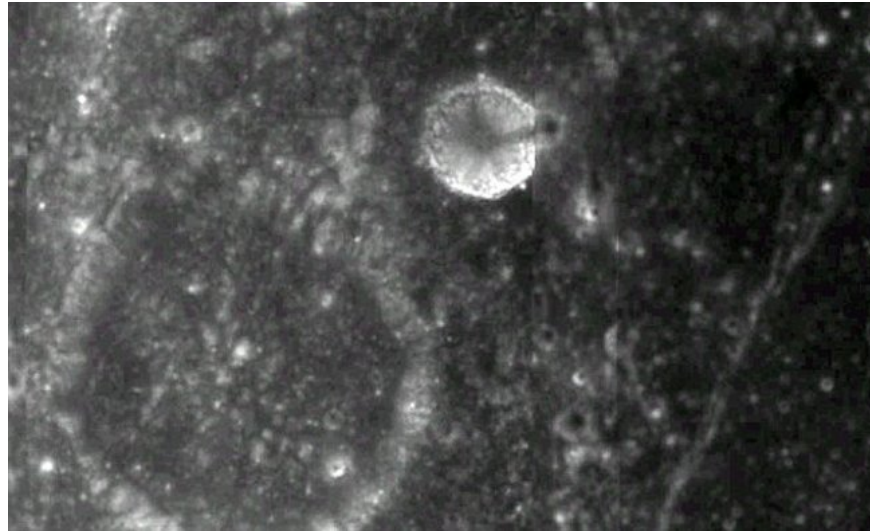


UFO hunters claim that the "antenna" is located on a separate plateau.

The surface of the Moon is captured by NASA's **Lunar Orbiter** . The red arrow shows the area " *alien antenna* " placed there.

According to **Mark Sawalha** , the sharp object could be an antenna built on top of a certain alien planet base operating on the Moon.

Earlier this year, an expert made a reasonable hypothesis to explain a previously discovered " *alien pyramid* " on the Moon.



The 3.5-mile (5.6km) structure was discovered in images from **Google Moon** , with some saying it was a " *launch pad* " built by aliens.

However, a researcher with NASA's LROC satellite mapping mission confirmed that the strange sign was nothing but " *a crater in a crater* ".

A researcher working on NASA's LROC satellite mapping mission rejected images claiming to capture a 3.5-mile (5.6km) dome that *looms* over the Moon.

According to **UFO Sightings Daily** , the discovery of the ' *oblong-shaped object* ' made by **YouTubeGuardGeek** users .

MexicoGeek used Google Moon to enlarge the lunar surface area between the crater **Rupes Liebig** and the **Rimae Mersenius** crater.

A plot site explains: "The *strange pyramid looks like it is protruding from a crater, but this is not a crater, but many small white light structures surrounding it. This can be built to accommodate a large ship that can safely take off without landing .* "

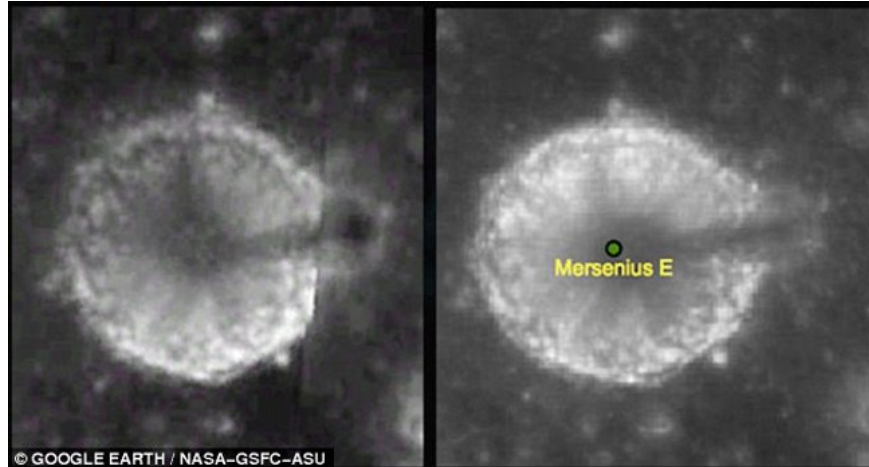
However, that opinion from experts has sparked controversy over these proposals.

" *It is not a pyramid-shaped object! What will happen to a small pit formed on the belt, after having a larger crater, Mersenius E* ", **Noah Petro** , a scientist of the **Lunar Reconnaissance project Orbiter Camera (LROC)** explained.

Talking to the *Huffington Post* , the scientist explained the emergence of the antenna tower as an artifact obtained from the mosaic process.

Petro explained: " *In the image of the Sun rising, the craters look brighter, but nothing unusual compared to any other area on the Moon .*"

The sun falls below the horizon so the shadow on the crater's wall creates a shadow along the eastern direction.



The structure, 3.5 miles (5.6 km) high, was discovered in images from **Google Moon** , some say it is a " *launch pad* " built by aliens.However, now the researcher working with NASA's LROC mission shows strange signs that there is nothing more than a crater in the crater (right).

Recently, the Chinese space agency provided some high-quality images of the Moon's surface, clearly showing the details of the moon's rock and fine gray dust.



Moon's Google Earth image shows 'alien tower'.

Many skeptics about Mark's hypothesis, not believing it is **an alien communication antenna tower** , think this could be the shadow of a rocky mountain or volcanic mountain on the Moon. This should be further explored!

See also: Google Maps detects 8 strange bases of aliens?

Having fun!

You finished reading the article "**Discovering 'alien antenna' on the Moon?**" edited by the [TipsMake](#) team. We hope this article has provided you with many useful tech tips and tricks. You can search for similar articles on tips and guides. Thank you for reading and for following us regularly.