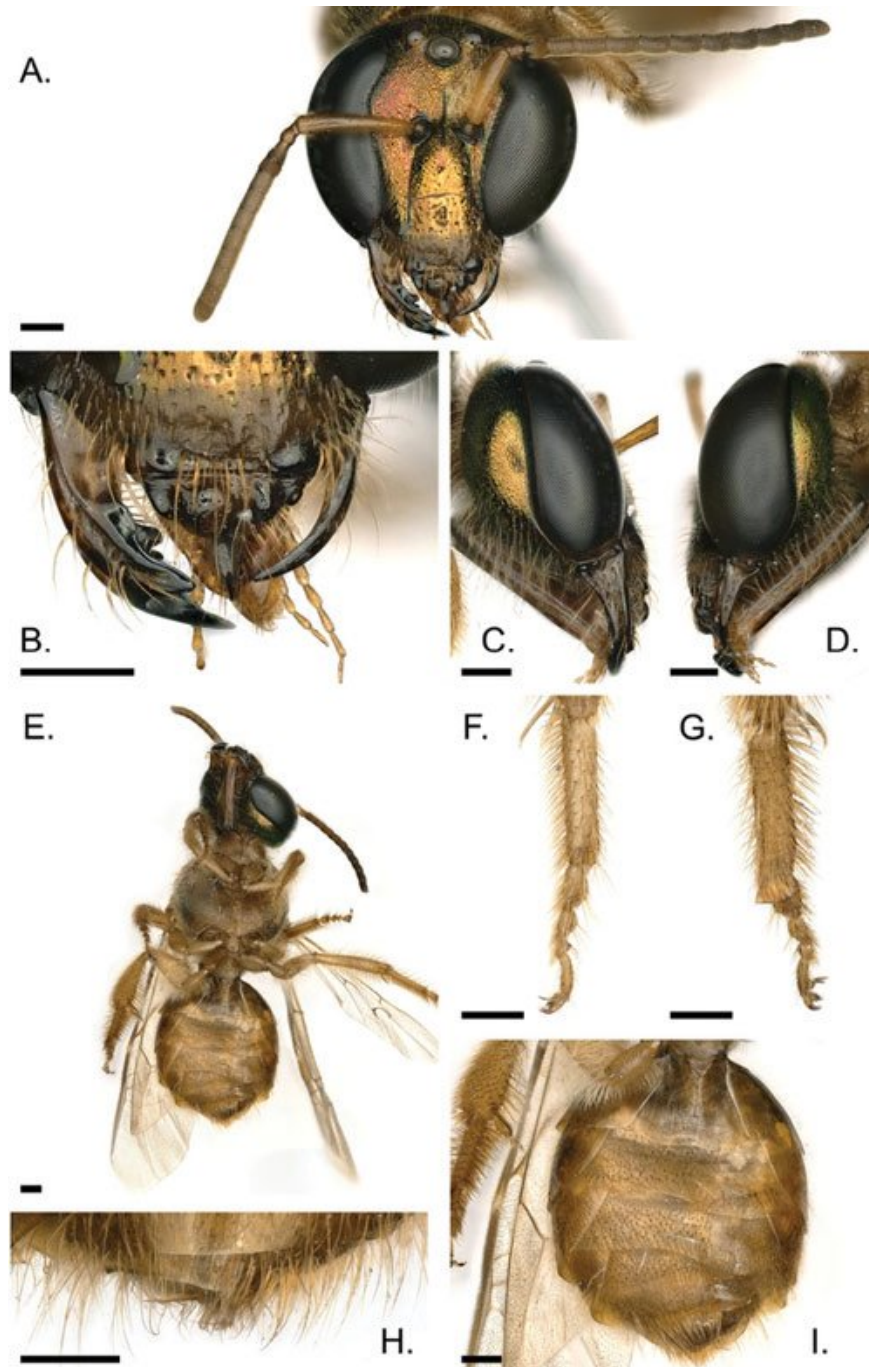


Discovered 'super male and female' bees are extremely rare

Recently scientists have discovered an extremely unique individual bee in nature, carrying both sexes, the left half of the male and the right half female.

Recently scientists have discovered an extremely unique individual bee in nature, carrying both sexes, the left half of the male and the right half female.

According to Science Alert, researchers sometimes find an animal carrying both sexes in the wild such as butterflies, crustaceans, especially crabs, lobsters and even birds. as not found in mammals). Such animals are called by the term gynandromorph.



Characteristics of gynandromorph male and female bee. Photo: Journal of Hymenoptera Research.

The bee, of which both sexes were newly discovered, is a nocturnal species in Central and South America called *Megalopta amoena*. On the left side of the bee has a long jaw, beard and slender hind legs that are male. While on the right with large jaws, small beards and hairy hind legs are female.

Observing the behavior of this bee, the scientists found that it often wakes up before the other males and females. However, its routine activities are more like children.

This can be considered a special case, because a live gynandromorph wasp is extremely rare.

According to the researchers, the gynandromorph will give them a better view of the transformation of highly organized community insects, the evolution of specialized forms and new methods of reproduction.

You finished reading the article "**Discovered 'super male and female' bees are extremely rare**" edited by the [TipsMake](#) team. We hope this article has provided you with many useful tech tips and tricks. You can search for similar articles on tips and guides. Thank you for reading and for following us regularly.
