

# Discover the secret behind the 'horror' sword swallowing magic

One of the 'horror' magic tricks that excites viewers is the performance of swallowing the sword about 40cm long through the throat. What is the mystery of the magician who applied here?

We all know that there is no magic behind the mysterious magic performances but it is impossible to explain why magicians do so. One of the 'horror' magic tricks that excites viewers is the performance of swallowing the sword about 40cm long through the throat. What is the mystery of the magician who applied here?

1. Decode classic magic tricks in the world
2. Decode 6 magic tricks that challenge all the laws of physics in the world
3. Decoding the magic tricks "matchstick knows dancing" is surprisingly simple



First of all, it is necessary to confirm that swallowing sword is not the same as the usual magic illusion. In order to perform this magic trick, performers have to practice hard and dangerous skills.

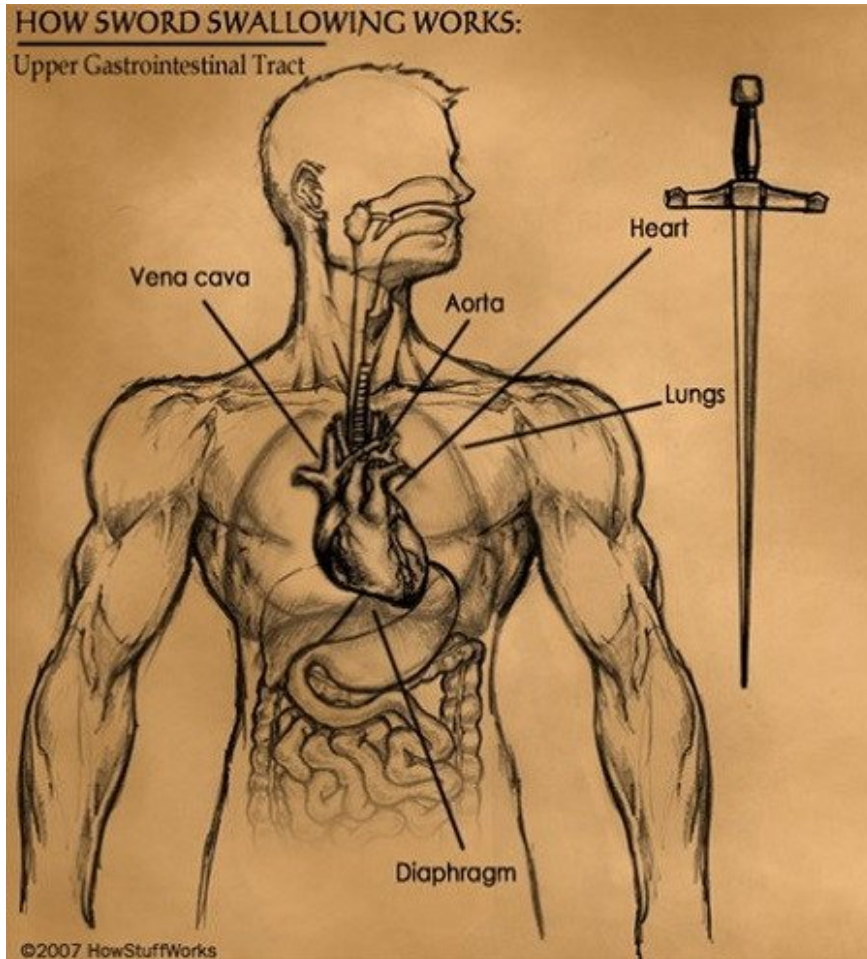
According to the definition of the International Swordsman Association (SSAI), a sword swallow is someone who can swallow a 38 cm long sword, the length is not enough to reach the stomach (the distance from the teeth to the part of The stomach is connected to the esophagus about 40 cm), the maximum length of the sword swallowed is 61cm, which is long enough to put the tip of the sword into the stomach of the person performing.



Sword swallowing is a different kind of interaction between two basic objects:

1. Upper gastrointestinal (GI) consists of: throat, pharynx, esophagus and stomach.
2. Sword.

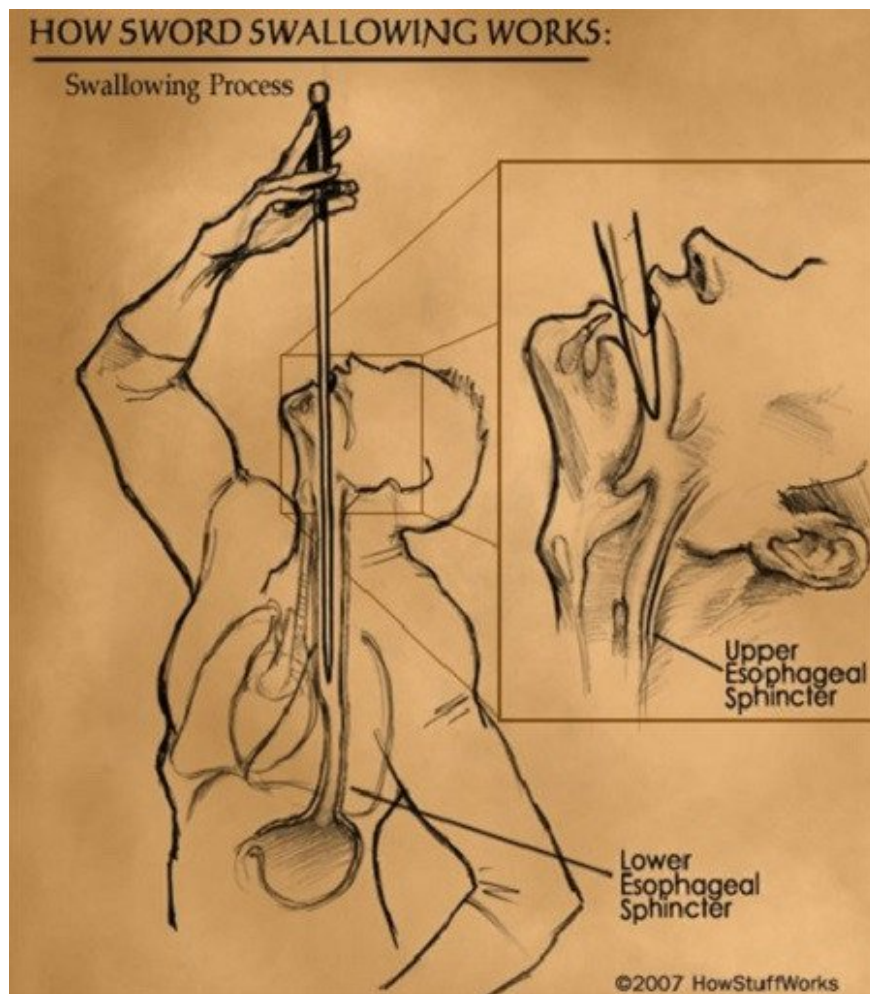
The upper gastrointestinal tract is relatively soft and controllable, some bends may change if the body is really relaxed and relaxed.



Describe the upper gastrointestinal tract of humans and the length of the sword.

The swallowing of the sword can be likened to the performer looking into the shell but here is the living sword, which is their upper gastrointestinal tract.

The swords brought in also follow the same path as swallowing food but the process is different. While swallowing food related to the contraction of some muscles, swallowing of the sword requires deliberate dilation of the upper gastrointestinal tract.



The image depicts the process of the sword going through the sphincter and straightening the upper gastrointestinal tract when it is swallowed in the swallows stomach.

This is what happens when the artist needs to do so to swallow the sword into the throat

1. Tilt your head back and stretch your neck to allow your mouth, esophagus to line up, now the throat and throat are stretched out.
2. Move the tongue away from the path of the sword and maximum throat relaxation.
3. Aligning the sword is parallel to the upper gastrointestinal tract and gradually passes the sword through the mouth, throat, throat, upper esophageal sphincter, and finally into the esophagus. Saliva is released as soon as the sword is inserted into the mouth to help lubricate the path of the sword. Vegetable oil is also used by some people as a lubricant to help the sword move more smoothly in the body.
4. In the process of going deep into the body to the stomach, the sword will straighten the curves of the esophagus.

This process is very dangerous, high risk, so it requires carefulness, accuracy and accuracy to every mm. With only a little distraction, the sword could deflect or puncture the gastrointestinal tract.

**Note :** Swallowing a sword is a dangerous performance, to make the performer have to work hard for a long time. In order to avoid possible accidents, readers are ABSOLUTELY NOT TRYING TO FOLLOW!

You finished reading the article "**Discover the secret behind the 'horror' sword swallowing magic**" edited by the [TipsMake](#) team. We hope this article has provided you with many useful tech tips and tricks. You can search for similar articles on tips and guides. Thank you for reading and for following us regularly.

---