

Discover inside the planet's largest yacht, it can serve nearly 7,000 passengers

Symphony of the Seas with a total of 228,081 tons is the world's largest yacht today.

Symphony of the Seas with a total of 228,081 tons is the world's largest yacht. Symphony of the Seas is produced and operated by Royal Caribbean, departing in 2018.

With a length of 362 meters and a width of more than 65 meters with 18 decks, Symphony of the Seas is luxuriously designed with full amenities (22 restaurants, 42 bars, cinemas, ice skating rink and swinging rope). meet all the needs of food and entertainment of passengers.



Below are pictures of luxurious, comfortable space of Symphony of the Seas, please admire.

The massive Symphony of the Sea is capable of serving up to 6,680 passengers and crew with up to 2,200 people.



Symphony of the Sea is made up of more than 500,000 separate parts and takes 3 years to complete.



Symphony of the Sea has 2,759 rooms, all of which are equipped with high class furniture, among them a special room of 125 m², Ultimate Family Suite.



Passengers can enjoy the exciting games on Symphony of the Sea with 24 swimming pools, simulate surfing and water skiing .



This is the top of the Ultimate Abyss, from this player can slide up to 28 meters high.



Splashaway Bay water park with many exciting games.

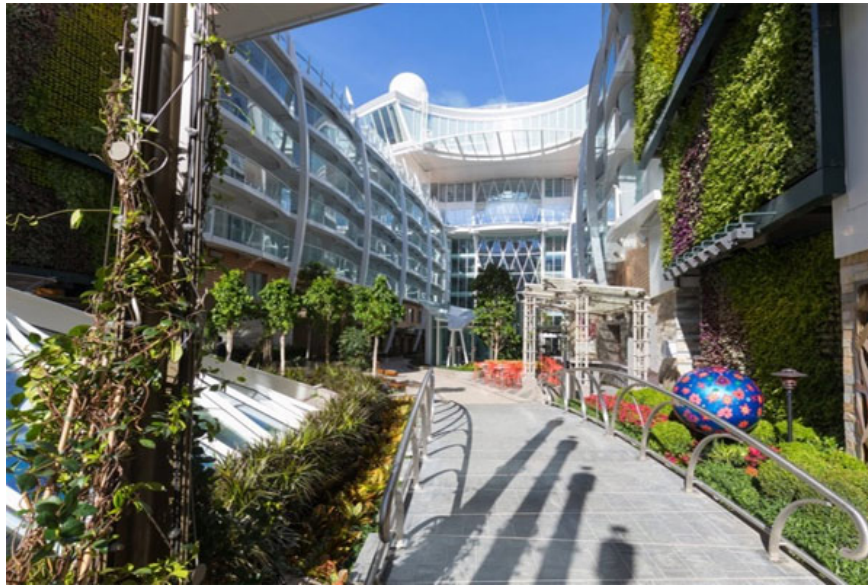


Passengers who don't like adventure games can relax at the hot tub or the spa room.

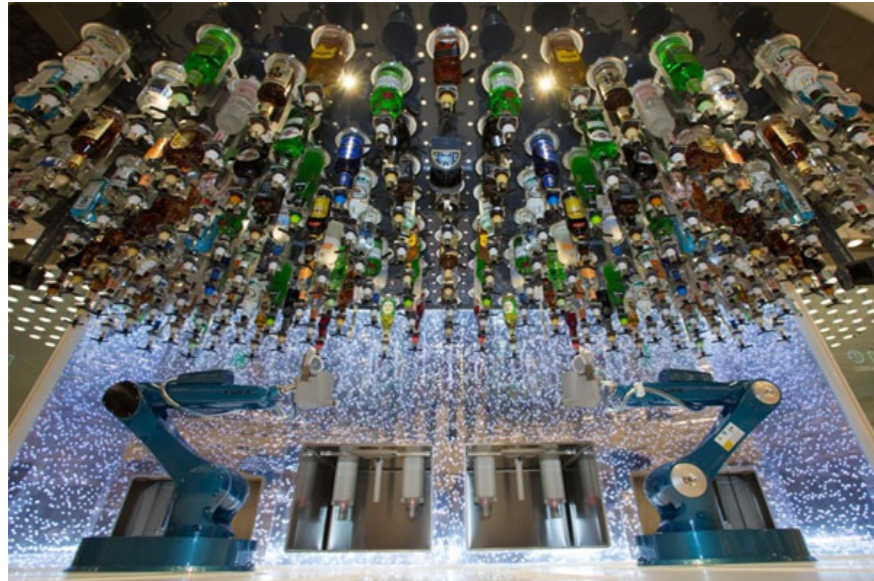




The yacht is divided into 7 "neighborhoods", most notably the Central Park with 27,000 trees.



Bionic Bar, where guests will enjoy delicious wine glasses prepared and served by robots.



One of the restaurants on the yacht is decorated in a style inspired by the fairytale movie Alice.



On the ship also has 2 climbing walls 13 meters high for passengers to experience and try.



Adventure swing game through the deck on the 9th floor.



Candy shop very sweet.



Symphony of the Seas also has cinemas, theaters and an ice skating rink ready to serve all the entertainment needs of passengers.



1. Discover Bill Gates' 7-year mansion, high-tech equipment every corner, cost 178 million USD
2. Inside China's 'planting view, planting' farms

You finished reading the article "**Discover inside the planet's largest yacht, it can serve nearly 7,000 passengers**" edited by the [TipsMake](#) team. We hope this article has provided you with many useful tech tips and tricks. You can search for similar articles on tips and guides. Thank you for reading and for following us regularly.