

# Disable the NVIDIA component to speed up the computer

NVIDIA graphics card is one of the devices supporting the best graphic design field work today. However, not everyone knows it is also a factor slowing down the computer by installing more components together with package driver installation.

NVIDIA graphics card is one of the devices supporting the best graphic design field work today. However, not everyone knows it is also the "agent" slowing down the computer by installing more components together with installing Driver installation.

These components include **NVIDIA Streamer Service** , **NVIDIA Streamer Network Service** and **NVIDIA Streamer User Agent** . Although it comes with driver installation package to serve the processing needs, most of these service processes are not needed and you may never need it so running like that will often cause a hangover. computer if you handle or work with a variety of data.

Therefore, you should disable these "redundant" components to speed up your computer and free up memory.

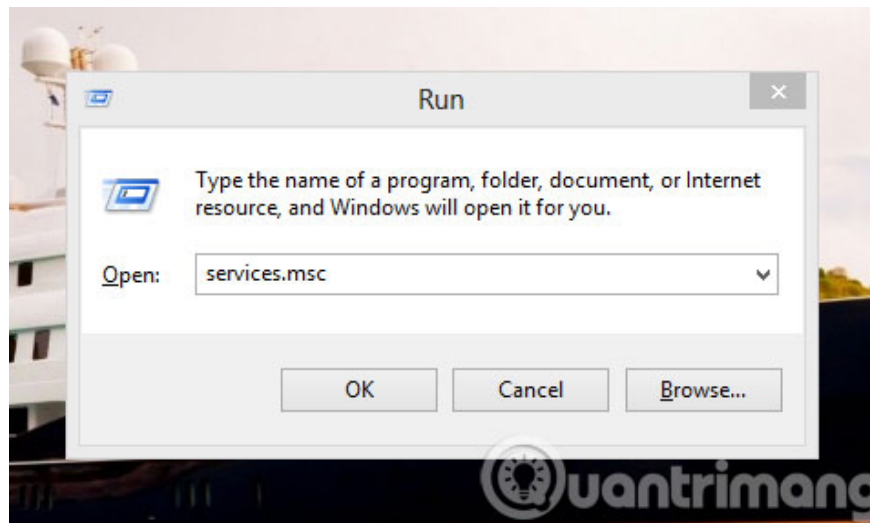
## 1- Which components should be disabled

Here are the background components that you can disable, however depending on how the video card is used on your computer, there will be a corresponding option to disable it.

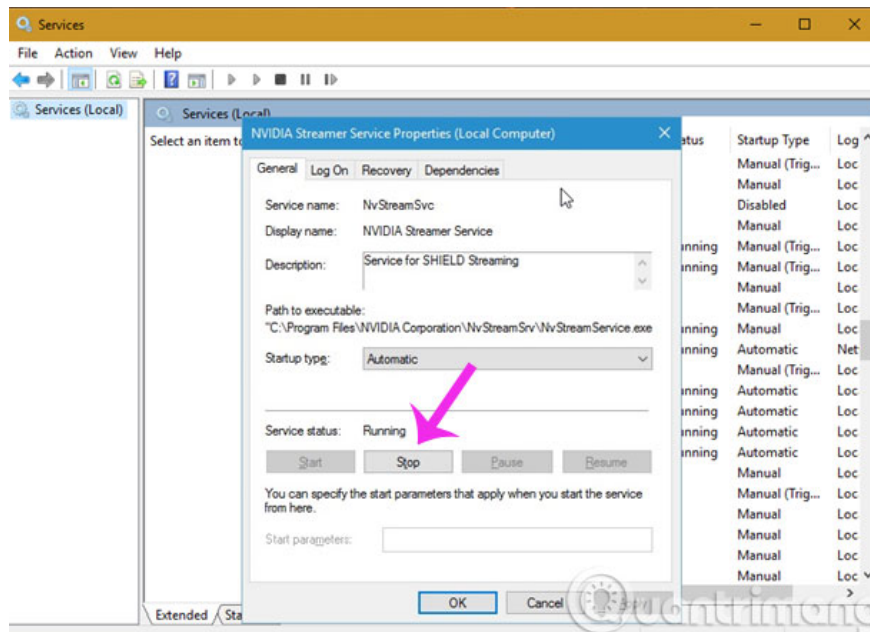
1. **NVIDIA Streamer Service**
2. **NVIDIA Capture Server Proxy**
3. **NVIDIA Backend** (NvBackend.exe) - A component of Nvidia GeForce Experience
4. **NVIDIA Capture Server** (nvspcaps64.exe) - A component of Nvidia GeForce Experience, with a function called ShadowPlay. This feature allows users to record their gaming progress.
5. **NVIDIA GeForce Experience Service** (GfExperienceService.exe) - The main component of the GeForce Experience
6. **NVIDIA Network Service** (NvNetworkService.exe) - There is an update check function for the GeForce Experience.
7. **NVIDIA User Experience Driver Component** (nvxdsync.exe) - There is very little information about this component except it supports 3D visibility.

## 2- How to disable them?

**Step 1 :** Press **Windows + R** key combination to open the **Run** dialog box and type keywords **services.msc** and press **Enter** to open the **Microsoft Windows Services** dialog box.

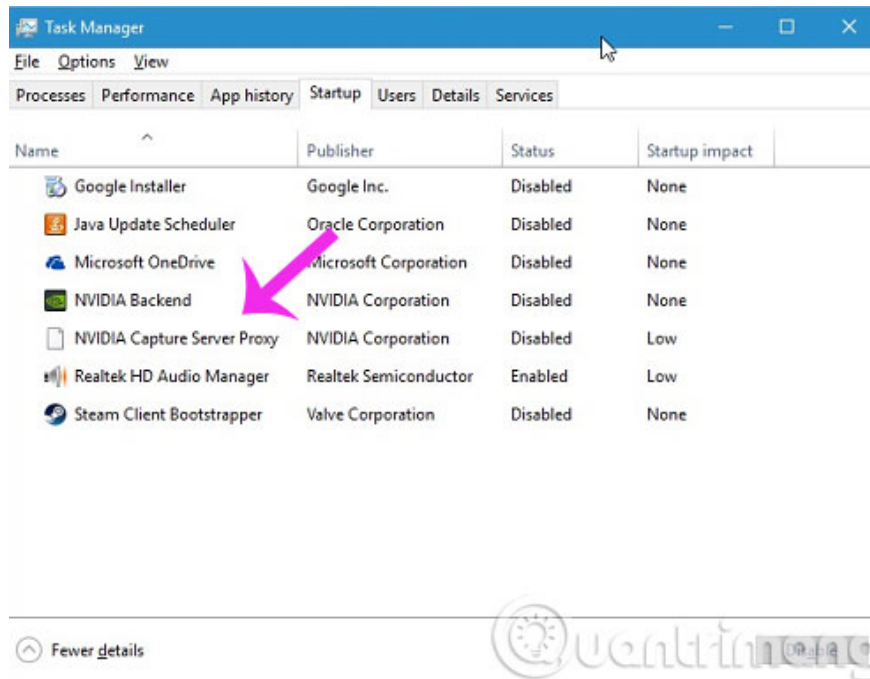


**Step 2 :** When the **Services** window appears, go to the **Nvidia Streamer Service** option . Double click on it and select **Stop** in the window that appears.



Next, select **Disabled** in **Startup type** . Then click **Apply** > **OK** to save.

**Step 3 :** To disable the **NVIDIA Capture Server Proxy** , open **Task Manager** and select the **Startup** tab, then right-click the **NVIDIA Capture Server Proxy** and select the **Disable** command .



With other components, you can disable it directly from Task Manager.

1. 4 ways to make Windows 10 boot faster
2. Tips to speed up your computer
3. 6 ways to speed up your Mac

**Good luck!**

You finished reading the article "**Disable the NVIDIA component to speed up the computer**" edited by the [TipsMake](#) team. We hope this article has provided you with many useful tech tips and tricks. You can search for similar articles on tips and guides. Thank you for reading and for following us regularly.