

Disable IPv6 to troubleshoot Internet connectivity issues on Windows computers

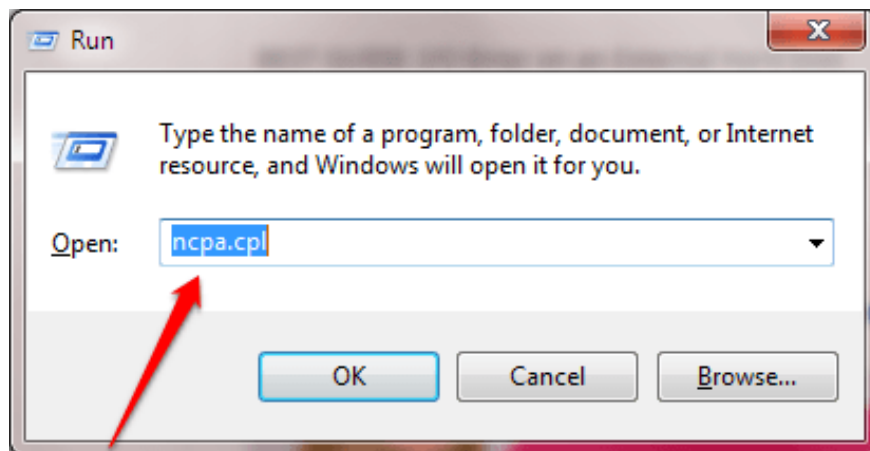
IPv6 is the latest protocol address that will replace IPv4. Since Windows Vista and IPv6 are enabled by default, many devices and network systems do not support IPv6. If you're having network connectivity problems, you should probably disable IPv6 to fix the problem.

IPv6 is the latest protocol address that will replace IPv4. Since Windows Vista and IPv6 are enabled by default, many devices and network systems do not support IPv6. If you're having network connectivity problems, you should probably disable IPv6 to fix the problem.

1. Disable IPv6 a Network Adapter

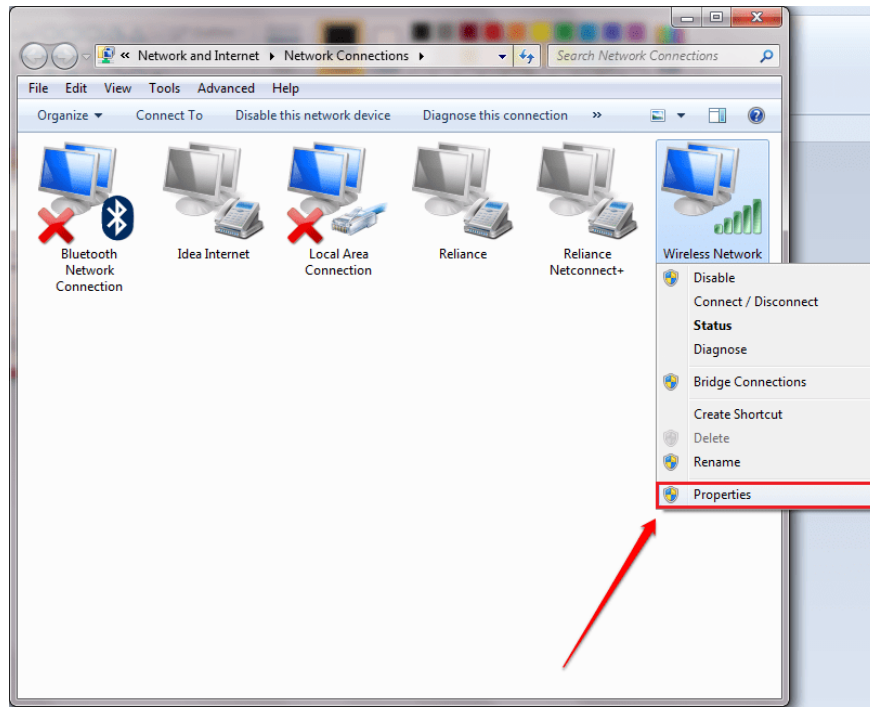
Step 1:

Press the **Windows + R** key combination to open the Run command window, then enter **ncpa.cpl** there and press **Enter** .



Step 2:

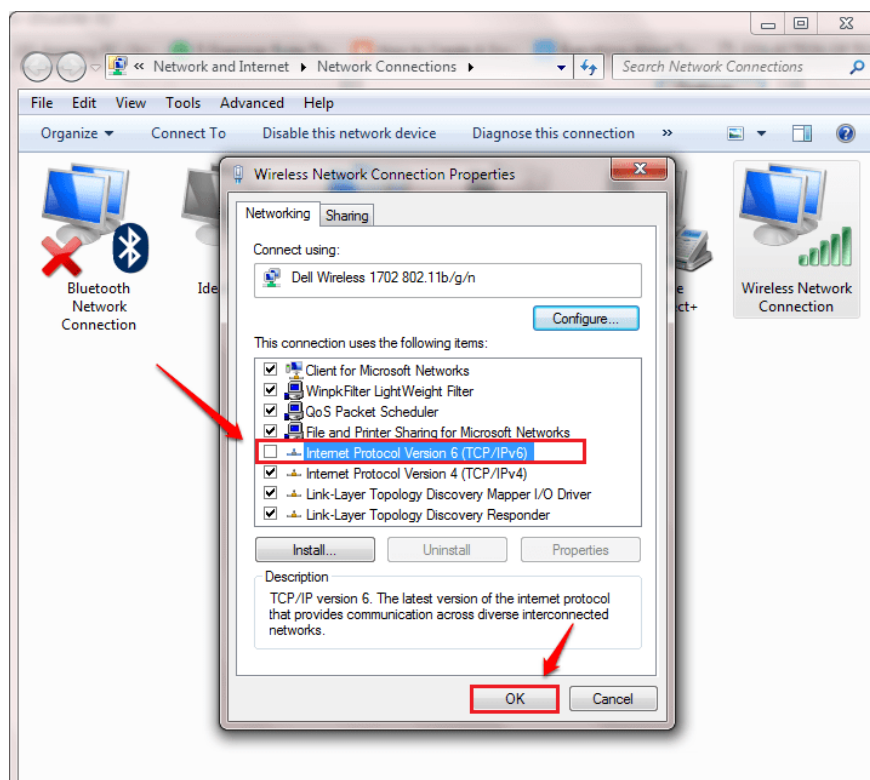
Now the screen shows the Network Adapter list window. Right-click the Network Adapter you are using, select **Properties** .



Step 3:

Next on the Properties window, click the **Networking** tab, here you uncheck the **Internet Protocol Version 6 option (TCP / Ipv6)**.

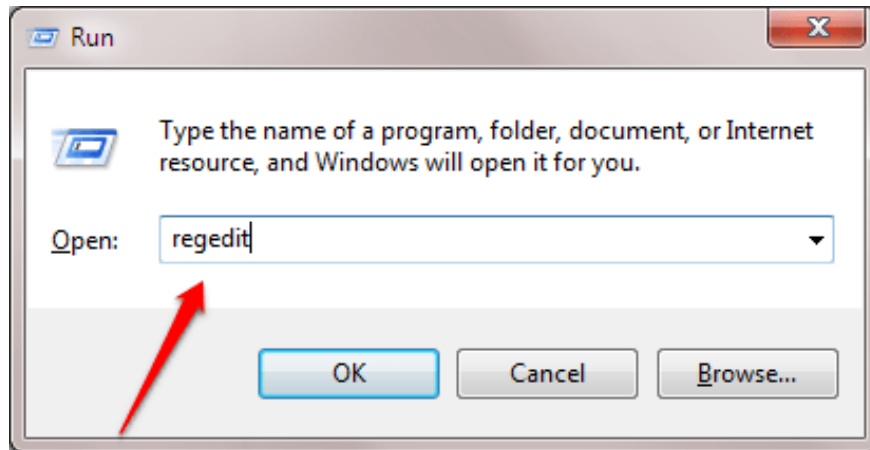
After finishing, click **OK** to finish.



2. Disable IPv6 on all Network Adapters

Step 1:

Press the **Windows + R** key combination to open the Run command window. Here you enter **regedit** and then press **Enter** to open the Registry Editor window.



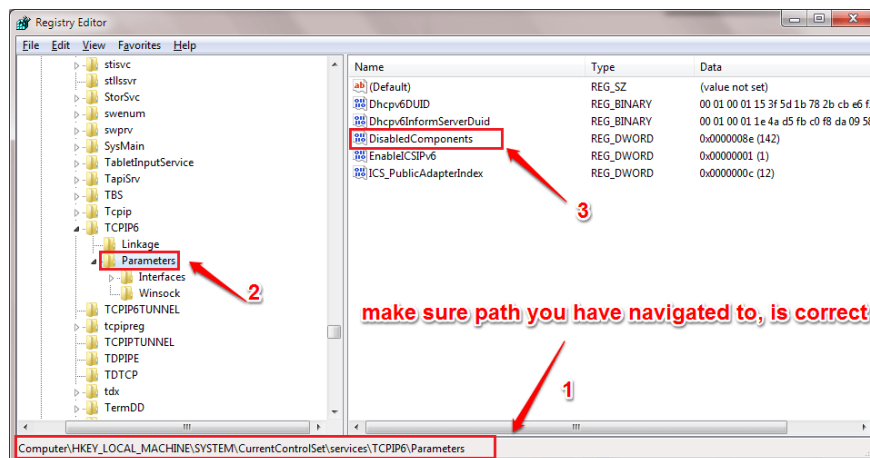
Step 2:

On the Registry Editor window, navigate to the key:

HKEY_LOCAL_MACHINE\SYSTEM\CurrentControlSet\Services\Tcpip6Parameters

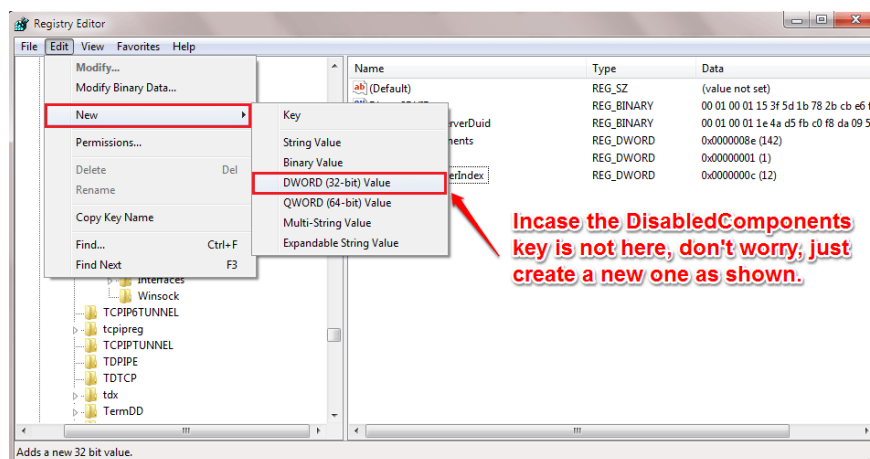
Make sure the path is correct.

Black out **Parameters** to see items in the right pane. Find the key named **DisabledComponents**.



Step 3:

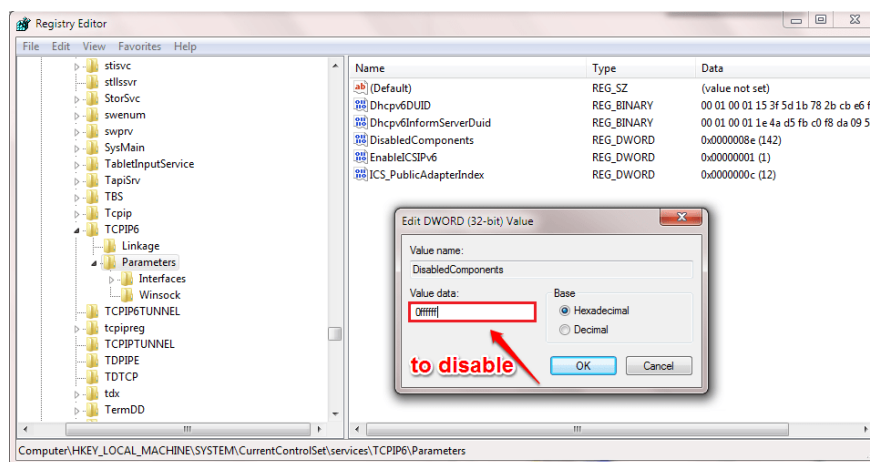
If you don't see the DisabledComponents key in the right pane, your task is to create a new key by clicking Parameters, then click **Edit** in the top corner => select **New** => **DWORD (32-bit) Value** .



Step 4:

Double-click **DisabledComponents** . To disable IPv6 for all Network Adapters, in the **Value data** frame you set it to **0ffffff** .

In case, if you want to re-activate IPv6, you do the same steps and set the value in the **Value Data** frame to **0** and then click OK.



Refer to some of the following articles:

1. 6 ways to view IP addresses on computers, smartphones or Tablet
1. Here's how to check if your IP address is static or dynamic
1. Conflict of IP address error when connecting to Wifi on iPhone, iPad, this is a fix

Good luck!

You finished reading the article "**Disable IPv6 to troubleshoot Internet connectivity issues on Windows computers**" edited by the [TipsMake](#) team. We hope this article has provided you with many useful tech tips and

tricks. You can search for similar articles on tips and guides. Thank you for reading and for following us regularly.
