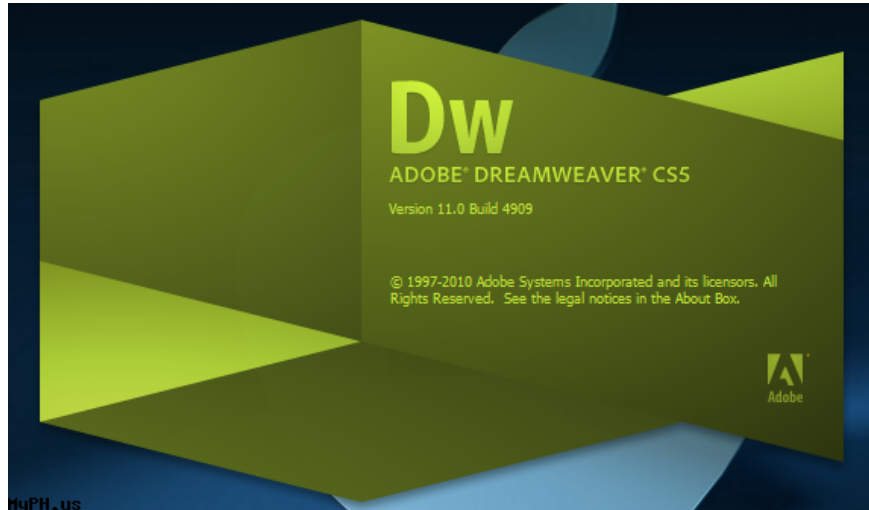


Design website with Adobe Dreamweaver CS5 software - Part 1

Adobe Dreamweaver is a powerful processing tool for web designers, users can program and develop web applications on multiple levels. If Dreamweaver only stops at a level of knowledge of web programming languages, Dreamweaver still meets the needs of professional website designers.

Adobe Dreamweaver is a powerful processing tool for web designers, users can program and develop web applications on multiple levels.If Dreamweaver only stops at a level of knowledge of web programming languages, Dreamweaver still meets the needs of professional website designers.



Non-professional users just need to find a satisfactory website template on the Internet, use a normal editing tool to edit or add some elements, then create a *Template* to apply to the entire Website.

In addition to drag-and-drop features to build websites, **Dreamweaver** also provides a fully functional coding environment including code writing tools (such as color coding, tag additions, code toolbars), Support common programming languages *HTML* , *CSS* , *Javascript*, *ASP VBScript* , *PHP* or *XML* . If Dreamweaver wants to build dynamic web applications running on *ASP.NET*, *ASP*, *JSP* and *PHP* server technology, Dreamweaver can fully meet these big projects.

The user interface is intuitive and user-friendly, the area of ??the code is numbered sequentially in the lines and colored by each card to facilitate monitoring and checking. In addition to the default interface, the program also supports a variety of interfaces with different toolbar layout layouts, in the **Designer** feature (for Dreamweaver CS5 version).

Adobe Dreamweaver can incorporate other Adobe software to create a perfect product, such as Adobe Photoshop to help edit and design images for the Website. You can download Adobe Dreamweaver 30-day trial here.

Create a folder containing web sets

Before embarking on creating a website, the designer's first job is to create a folder to contain all the web-related things, for example **webserver** .

In that folder, you will create other folders to store data such as:

The *Image* folder is used to contain the entire image of the website.

Flash folder is used to store flash files, video clips, .

Data folder used to store data

And other directories depend on the purpose of the web creator.

2. Create a new website

Start Dreamweaver, in the first window of the program select *HTML* to open a new document page. Or go to the **File** menu, select **New** . In the **Blank Page** section select **HTML** and click the **Create** button to create a new page (Figure 1).

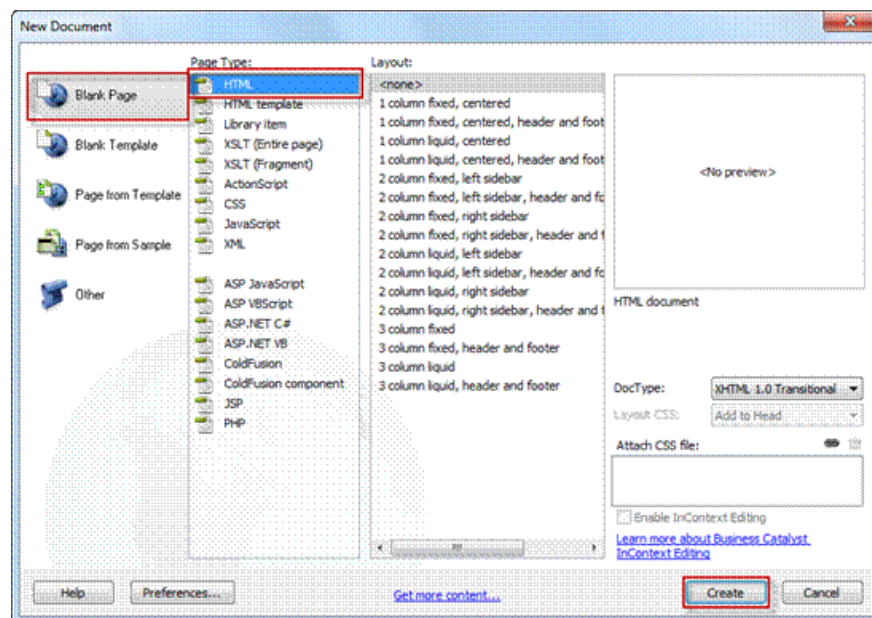


Figure 1. Create website

3. Save a web page

Before embarking on the design, you should save the site by going to the **File** menu, selecting **Save** or **Save as** . Then save the website to the folder containing the web with the * **.html** format . *Note* , the website of the website must be named **index.html** and must be saved in the directory containing the web.

4. Website format

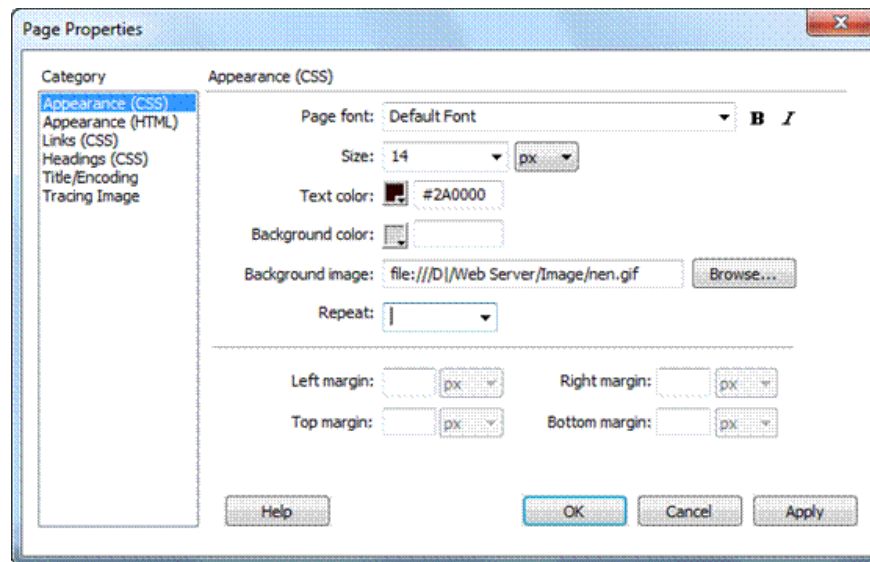


Figure 2. Site properties

After saving the website successfully, go to Modify menu and select **Page Properties** to set the format for the website.

In the **Page Properties** dialog box, adjust the following parameters (Figure 2):

Item **Appearance (HTML)**:

- + *Background image*: Select Browse and browse to the image file used as the background for the website.
- + *Background*: Click on the palette button and indicate the background color for the website.
- + *Text*: Specify the default font color.
- + *Link*: Specify the default font color when you create a link for it.
- + *Left margin*: Enter the left margin compared to the content of the website.
- + *Top margin*: Enter the *margin* margin above the content of the website.
- + *Margin width*: enter the width of the website.
- + *Margin height*: enter the height of the website.

Item **Title / Encoding** :

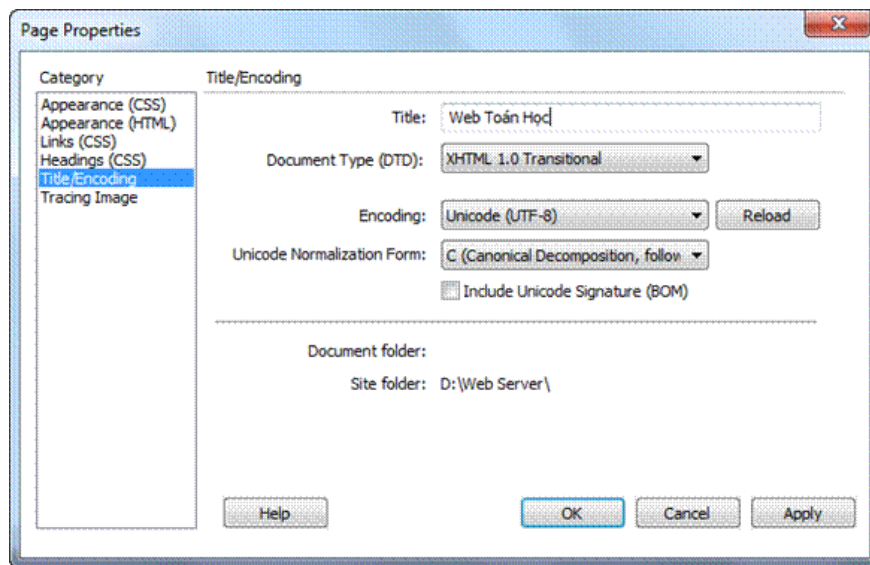


Figure 3. Title and encoding

+ *Title*: Enter the title of the website.

+ Other items are left to default.

After tweaking the website format, select OK to set up (Figure 3).

5. See the web page in the browser

In the process of working, if you want to preview the website on the browser, then press **Ctrl + S** to save, then press **F12** to see on the browser installed as default or click on the icon with the left picture land above and select the browser to view.

6. Create a table in the website

- Insert table

If you want to create a website with content that is located in the appropriate and easy-to-find locations on the search engines, you need to create a table before entering the content. To do so, go to Insert Menu, select Table.

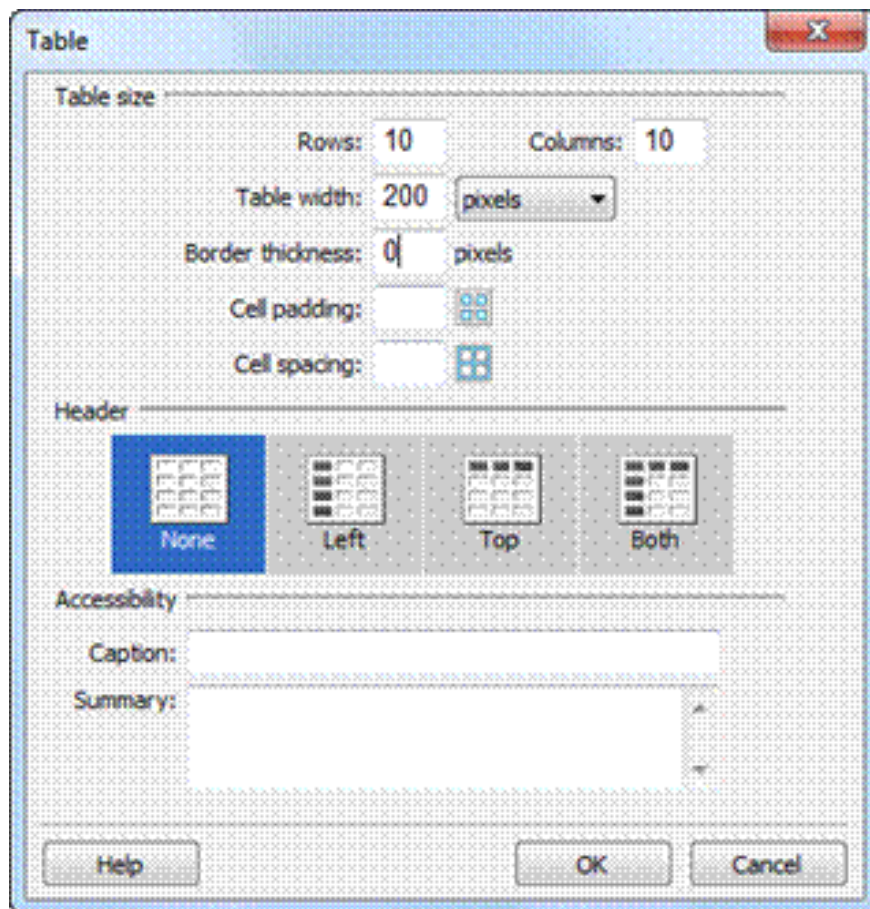


Figure 4. Setting table properties

The Table dialog box appears, enter the line number in the **Rows** section, the column number in the **Columns** section, the **Table width** in the **Table width** and in the **Border thickness** section, enter the size value of the frame in the table and then click OK (Figure 4).

- Table format

Click on the frame of the table, the attribute frame of the table appears below as shown in Figure 5

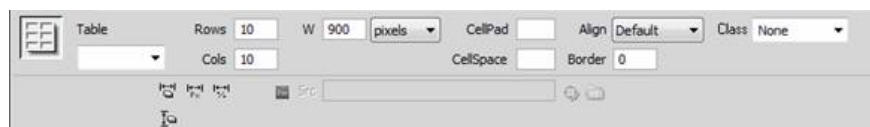


Figure 5. Table format

Set the attribute table with the following contents:

W, H: Width and height of the board.

Rows: Number of rows.

Cols: Number of columns.

CellPad: distance from text to table.

CellSpace: the distance between the cells of the table.

Border: the border of the table.

Align: Alignment mode of the table.

BgColor: the background color of the table or cell.

Brdr: border color.

- Change table structure.

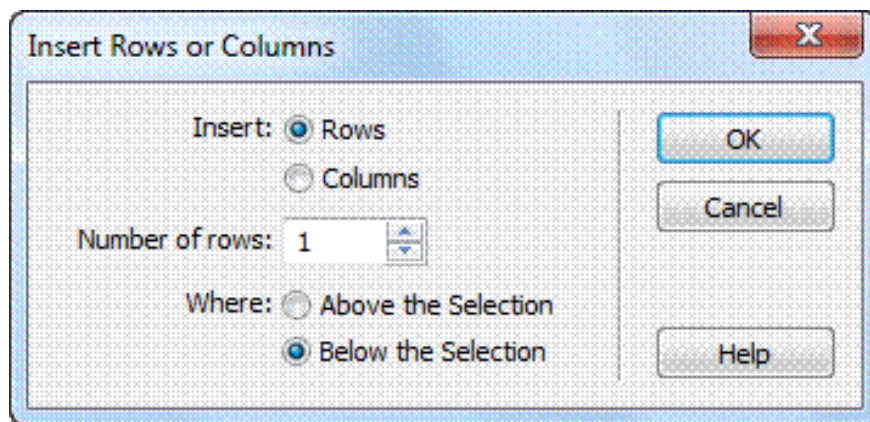


Figure 6. Add line to table

During work, the generated table may not be suitable. You can change the structure of the table with the following content:

Add line: select the line you want to insert a new line behind it. Select **Modify > Table > Insert Rows or Columns** .

In the window that appears, check before **Rows** and **Below the Selection** . In the **Number of rows section** , type the number of lines you want to insert and click OK (Figure 6).

Add a column: select the column to which you want to insert a new column to the right. Repeat the same steps as adding a line, but check the box before Columns.

Delete line: select the line you want to delete, select **Modify > Table > Delete row** (or right-click the line you want to delete, select **Table > Delete row**).

Delete column: select the column you want to delete, go to **Modify > Table > Delete column** (or right-click the column you want to delete, select **Table > Delete column**).

- Merge cells: select the cells you want to merge, select **Modify > Table > Merge cells** (or click the cell merge icon under the properties pane)
- Split cell: select the cell you want to split, select **Modify > Table > Splits cells** (or click the split icon under the property frame)
- Align text in a cell.

You select the text to format in the cell or select the cells to format, then right-click the selection and select **Align** . Then select one of four alignments: Left (left), Right (right), Center (center) and Justify (align) (Figure 7).

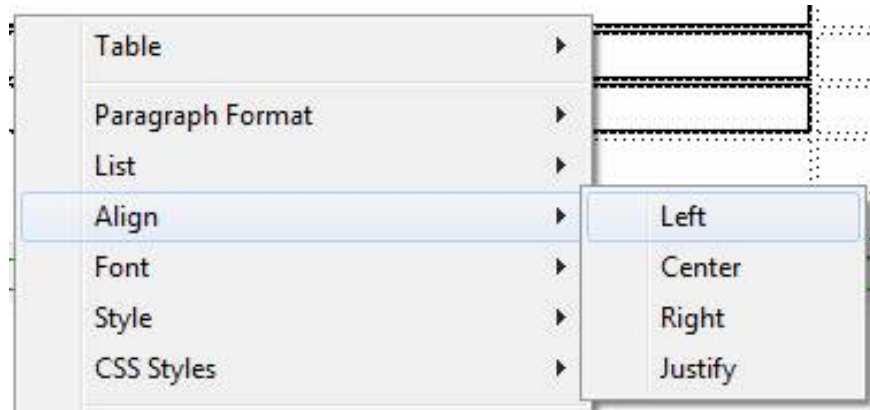


Figure 7. Align text in cell

You finished reading the article "**Design website with Adobe Dreamweaver CS5 software - Part 1**" edited by the [TipsMake](#) team. We hope this article has provided you with many useful tech tips and tricks. You can search for similar articles on tips and guides. Thank you for reading and for following us regularly.