

# Decipher the mystery of the extinction that destroyed 96% of marine life

The scientific world calls this the most devastating Great Dying. All 96% of marine life on the planet is completely destroyed, strongly affecting the evolution of the Earth.

According to scientists since 540 million years ago, our Earth has experienced about 20 extinctions large and small. 252 million years ago, a devastating extinction almost all the life of the ocean on Earth happened to be one of them.

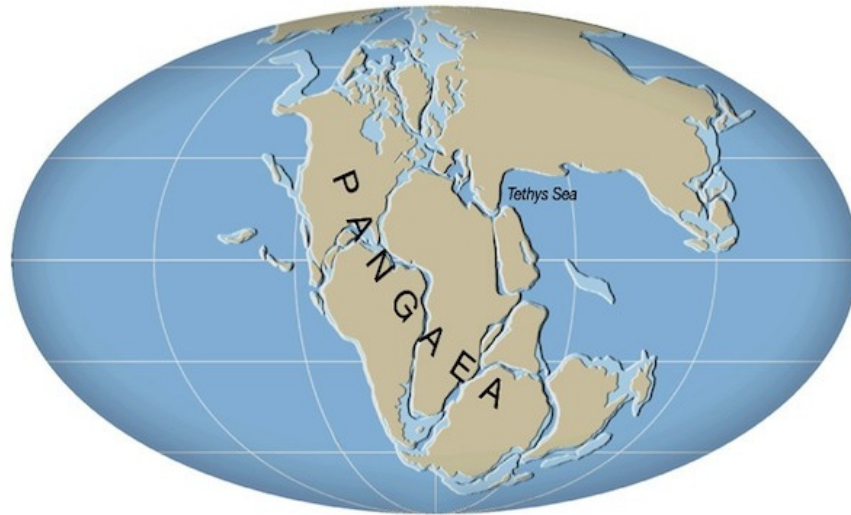
The scientific world calls this the most devastating Great Dying. All 96% of marine life on the planet is completely destroyed, strongly affecting the evolution of the Earth.



Great Dying.(Artwork: Internet.)

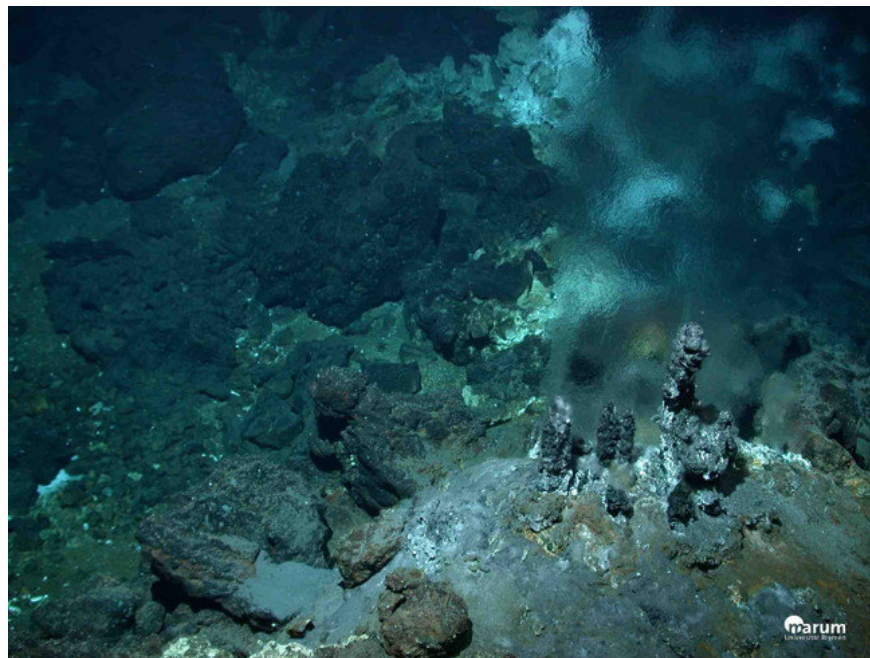
Only 4% of the group of survivors of the Great Extinction are the ancestors of much of life on Earth today. And it takes up to 30 million years since then, the new vertebrate group has a chance to recover in variety and quantity.

Although some of the information of this Great Extinction was learned, until now, world paleontologists still do not know the true cause of this global destruction.



Pangaea supercontinent at the end of the Paleozoic and the beginning of the Mesozoic era.(Photo: Internet.)  
Recently, a group of scientists have been studying the layers of reefs in the waters of Canada and Japan, which once belonged to a large ocean surrounding **Pangaea supercontinent** in the end of Paleozoic and the beginning of the Great Birth - ocean Panthalassa.

They found the sulfur dioxide compound ( $\text{SO}_2$ ) mixed with another sulfur compound to form a powerful chemical poison. Over time, this amount of chemical toxins is growing and being "kept" by sediments in the seabed.



There will be no Great Extinction if there are no **subterranean waves** , called **Shoaling** by scientists. They destroyed the subsurface sediments and released huge amounts of poison stored for years. Thanks to the huge ocean waves, the poison spreads and destroys life throughout the ocean. Only 4% of marine life on Earth survived.



Despite the conclusion that Shoaling was the indirect cause of the Great Extinction occurred 252 million years ago, scientists still cannot give an explanation of the formation of subterranean waves. that period. And why the aftermath of a Great Extinction under water also caused 70% of terrestrial life to be destroyed.

1. How long does a dinosaur egg take to hatch?
2. What is the most devastating natural disaster that the earth has experienced?

You finished reading the article "**Decipher the mystery of the extinction that destroyed 96% of marine life**" edited by the [TipsMake](#) team. We hope this article has provided you with many useful tech tips and tricks. You can search for similar articles on tips and guides. Thank you for reading and for following us regularly.