

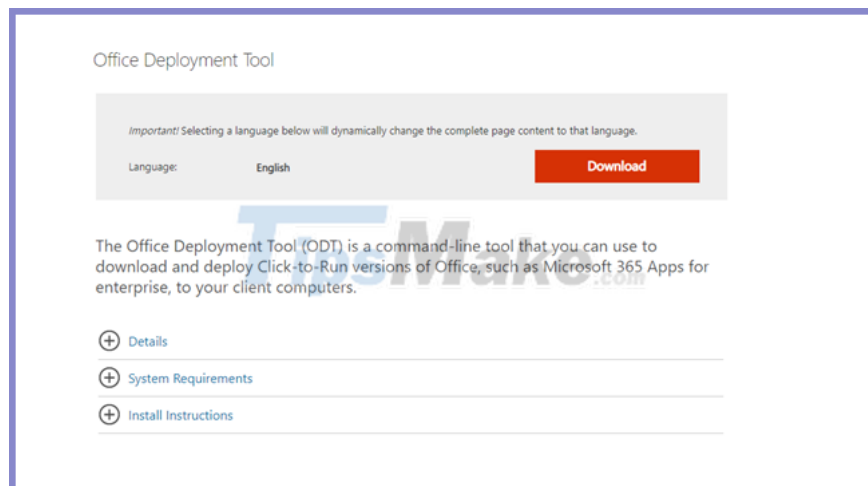
Create your own Office installer as you like with the official tool from Microsoft

How to create a custom Office installer yourself with the official tool from Microsoft. By default, when you launch the Microsoft Office 365 installer, it automatically installs all Microsoft Office applications by default.

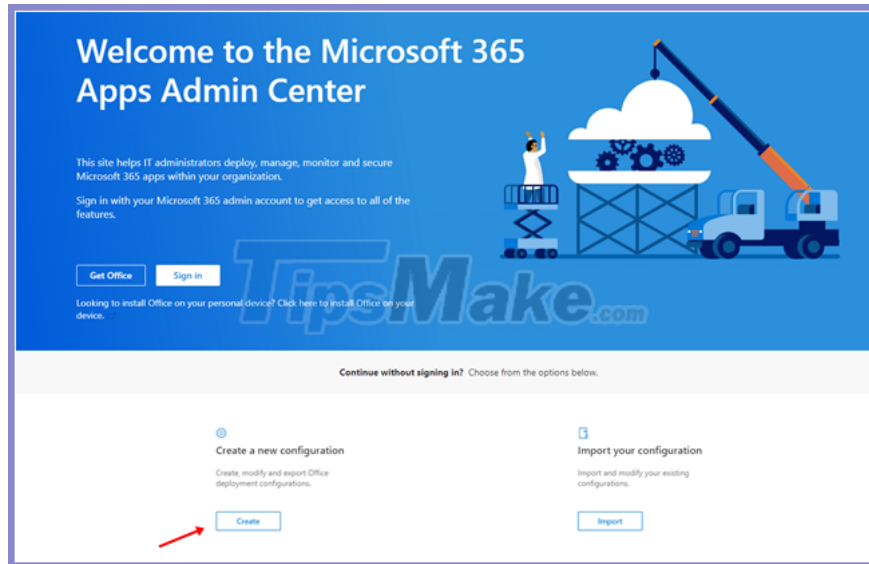
And during the installation process, you cannot manually select specific applications, change the directory path where the settings are stored, or set the language of the application. In fact, you get very few customization options when you install Microsoft Office 365 on your desktop.

Overall fine for most people, but basically it's hard to accept if you can't set the settings on your own. With this in mind, Microsoft has released the Office Deployment Tool, allowing users to set up a custom Office 365 installer themselves. Specific usage is as follows.

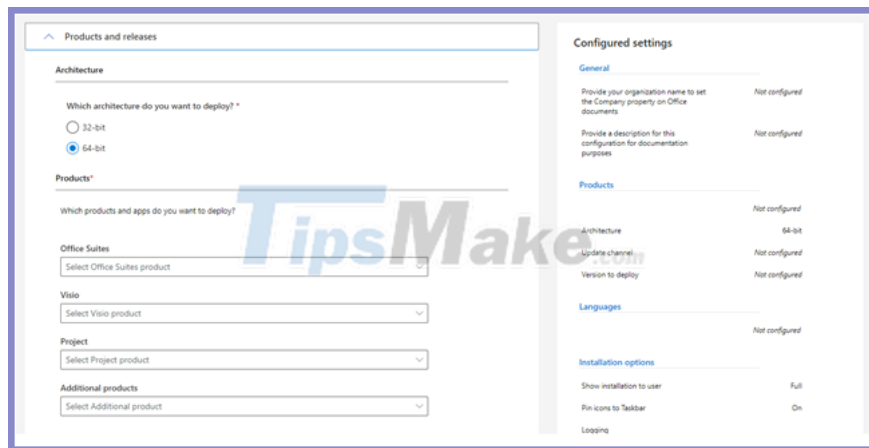
How to use the Office Deployment Tool to fully control the installation of Microsoft Office 365 on your computer



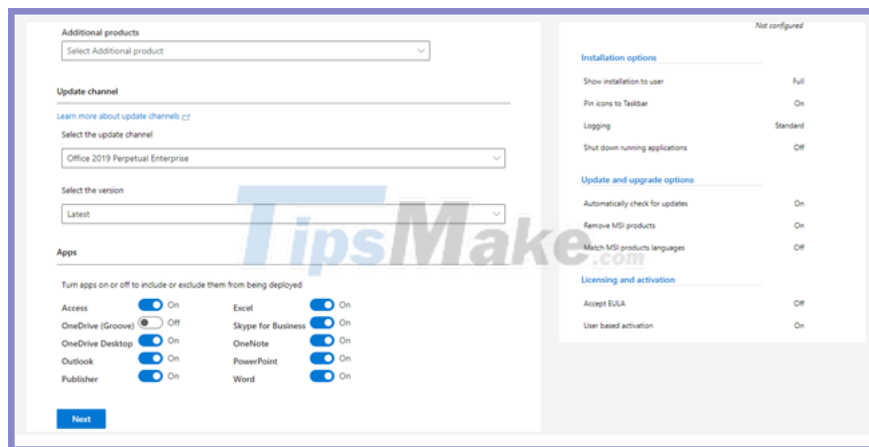
Step 1: Go to [this site](#) to download the latest version of the Office Deployment Tool.



Step 2: Continue to access [this path](#) and click "Create" under "Create a new configuration".



Configuration setup interface appears. The first will be the Products and releases section, including the structure and apps options you want to install.



Overall, this is the most important customization for creating an Office 365 installation. Applications will show and allow you to choose which settings to install.

Products and releases

Language

Languages

Select primary language*

English (United States)

Select additional languages

Select additional proofing tools

Next

Next is to choose the Language to install.

Installation options

[Learn more about installation options](#)

Where do you want to deploy Office from?

Office Content Delivery Network (CDN)

Local source

Source path: Network, local, or HTTP path

Fallback to the CDN for missing languages

Microsoft Endpoint Configuration Manager

Show installation to user: On

Pin icons to Taskbar: On

Logging: On

Save log file to: Network, local, or HTTP path

Shut down running applications: Off

Next

The "Installation options" section allows you to set up where to install Office 365. There are two options for you, including the Office Content Delivery Network (CDN) that allows the server to always download the Office installation files. from cloud (recommended, no source path required).

Installation options

[Learn more about installation options](#)

Where do you want to deploy Office from?

Office Content Delivery Network (CDN)

Local source

Source path
Please enter valid file path

Fallback to the CDN for missing languages

Microsoft Endpoint Configuration Manager

Show installation to user On

Pin icons to Taskbar On

Logging On

Save log file to

Shut down running applications Off

Next

Local Source allows you to download Office setup files to a local folder or share them over the network, and the installation will be run from this folder. Shared or folder capabilities must exist when setup is run. In case you choose Local Source, setup will check what content is already available for sharing or on certain folders and download only what's missing.

Upgrade options

Uninstall any MSI versions of Office, including Visio and Project On
[Learn more about removing MSI versions of Office when you upgrade](#)

Uninstall Visio On

Uninstall Project On

Uninstall SharePoint Designer On

Uninstall InfoPath On

For uninstalled MSI versions of Office, install the same languages Off

Automatically upgrade to the selected architecture Off
[Learn more about switching architectures during an upgrade](#)

Next

The Update and upgrade section allows you to choose whether you want future updates and upgrades to be installed from a CDN or a local source. Turn automatic updates on or off, choose whether you want to remove everything left over from a previous MSI installation, before installing the Click-to-Run version of Office .

Automatically accept the EULA On

Please Note:

Your use of the subscription service and software is subject to the terms and conditions of the agreement you agreed to when you signed up for the subscription and by which you acquired a license for the software. For instance, if you are:

- a volume license customer, use of this software is subject to your volume license agreement.
- a Microsoft Online Subscription customer, use of this software is subject to the Microsoft Online Subscription agreement.

Product key

KMS Client Key
Product key entry is not required for Key Management Service (KMS) activation.

Multiple Activation Key (MAK)
Multiple Activation Key (MAK). Type a valid 25 character volume license key with no spaces.

Autoactivate Off

Product activation

User based [Learn more about user based licensing](#)

Shared Computer [Learn more about shared computer activation](#)

Allow the licensing token to roam

Network, local, or HTTP path

Device based [Learn more about device based licensing](#)

Next

The Licensing and activation section will be copyright and activation options after installation. Here you should enable the option "Automatically accept the EULA" and deactivate the option "Autoactivate".

General

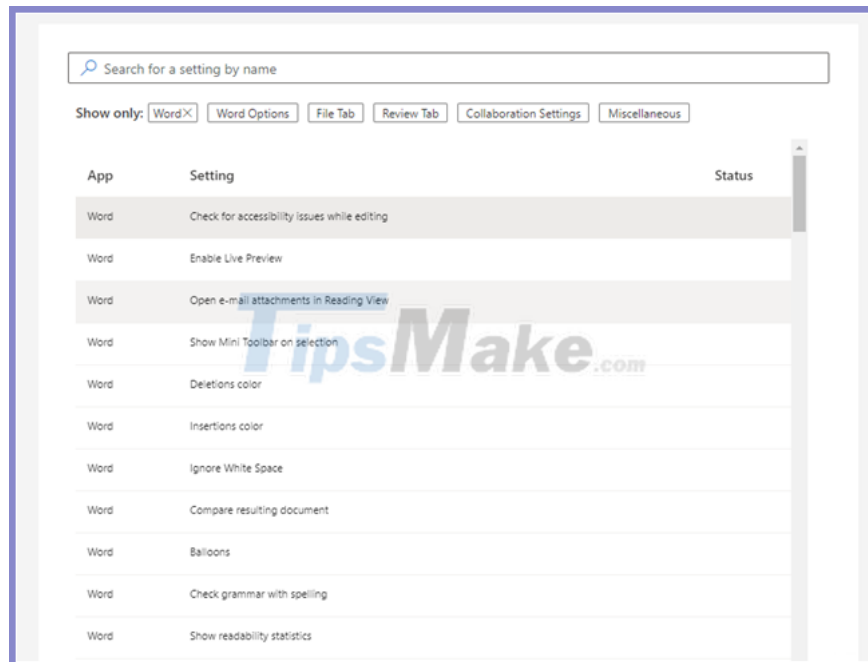
Provide your organization name to set the Company property on Office documents

Hoc.CMD99

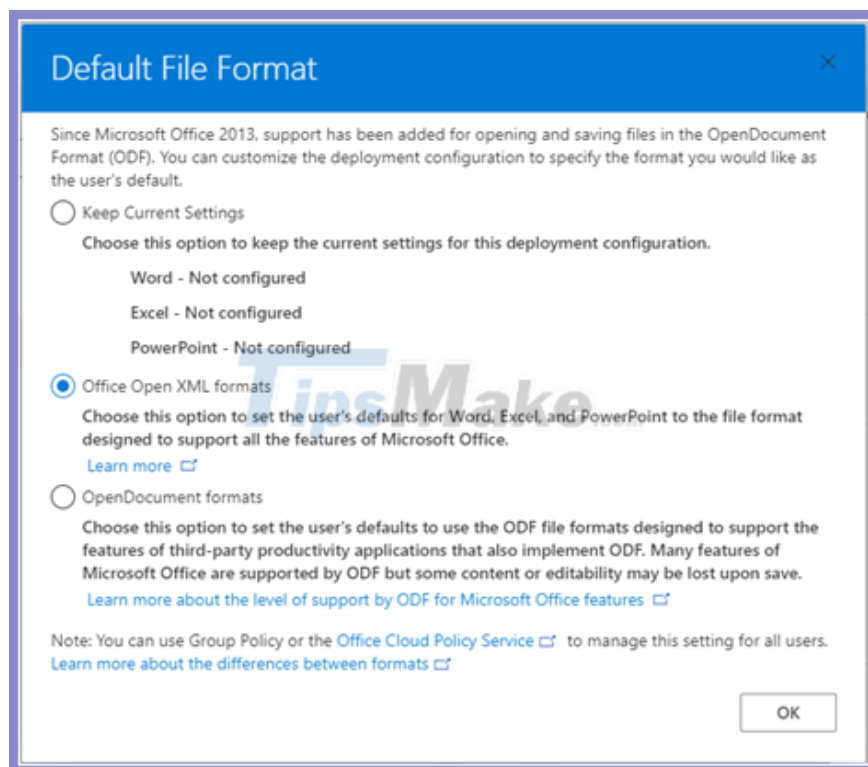
Provide a description for this configuration for documentation purposes

Next

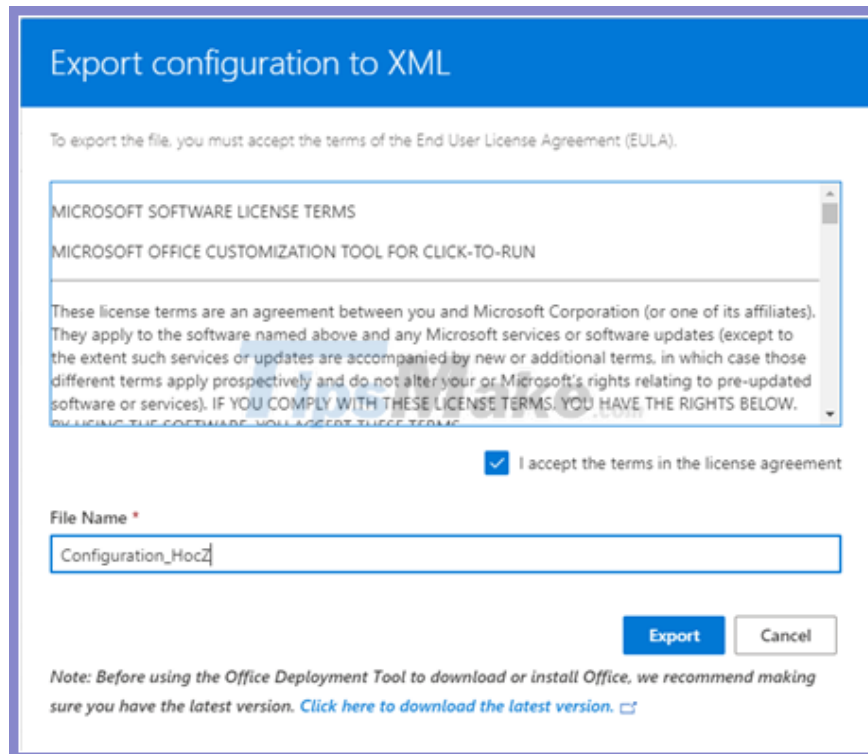
The General section allows you to add your name or the name of an organization and the information will be saved in the configuration file.



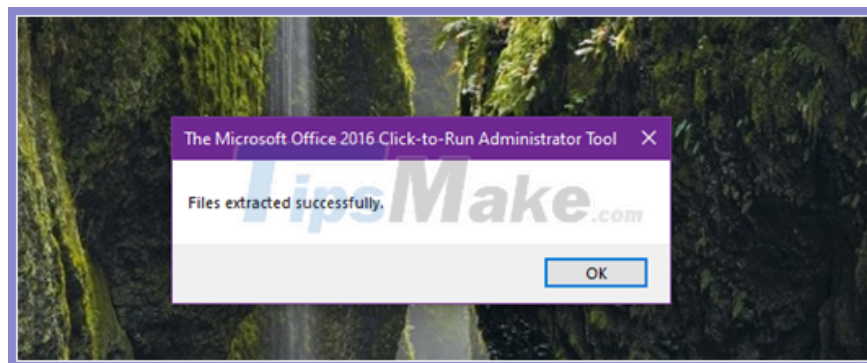
And finally the Application preferences section, which allows you to customize many of the settings for the extensions included in the installation package.



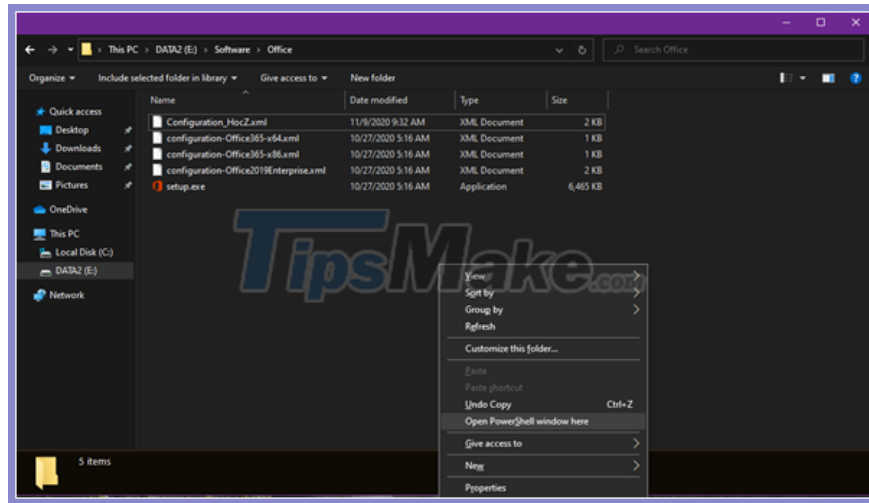
Step 3: After customization is complete, click Export, and check the option "Office Open XML formats", then click OK.



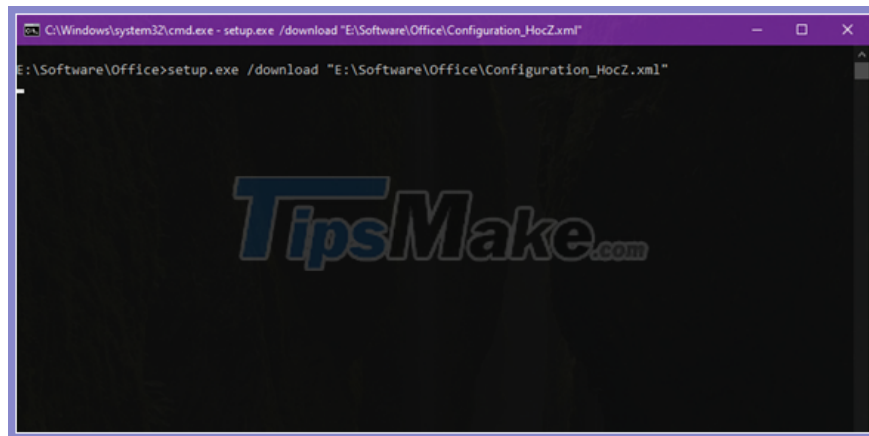
Confirmation window appears, please check the box to accept the terms, name the file and click Export to download the configuration package to your computer.



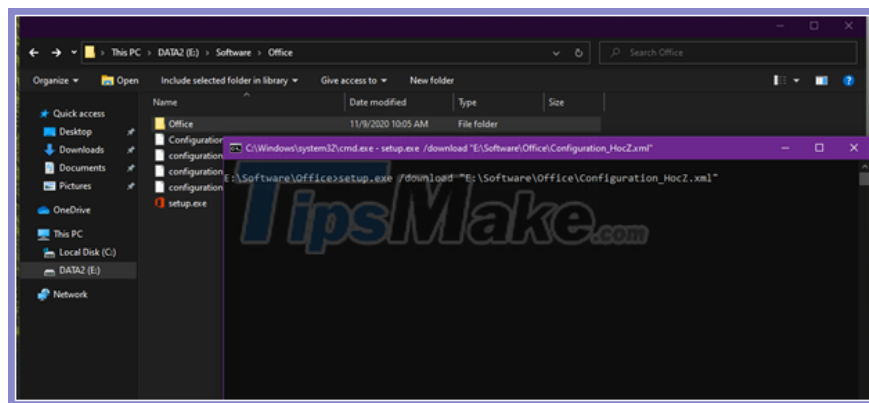
Step 4: Go back to the installation file of Office Deployment Tool downloaded above, launch it to install the Office Deployment Tool on your computer.



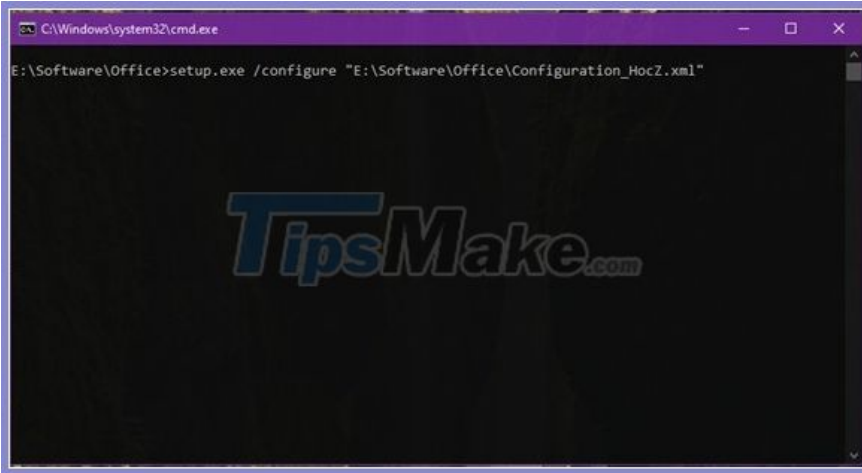
Step 5: After installing the Office Deployment Tool, copy the XML file configured and load above into the installation directory of the Office Deployment Tool. Then press Shift key on the keyboard and right click, select Open PowerShell windows here.



Run the command "setup.exe / download filename_XML".



After running the command, you should not see anything happen, but in fact the Office Deployment Tool is downloading the Office 365 installation data according to your setup, and this process will take place in the background. At the same time, in the Office Deployment Tool folder, a "Office" folder will appear, which is where the downloaded installation data is located.

A screenshot of a Windows command prompt window. The title bar reads "C:\Windows\system32\cmd.exe". The command prompt shows the current directory as "E:\Software\Office" and the command being executed is "setup.exe /configure "E:\Software\Office\Configuration_HocZ.xml"". A large, semi-transparent "TipsMake.com" watermark is overlaid on the command prompt area.

```
C:\Windows\system32\cmd.exe
E:\Software\Office>setup.exe /configure "E:\Software\Office\Configuration_HocZ.xml"
```

Once the download is complete, continue running the command "setup.exe / configure filename_XML" to begin the custom installation of Office 365 from you.

Very simple, right?

You finished reading the article "**Create your own Office installer as you like with the official tool from Microsoft**" edited by the [TipsMake](#) team. We hope this article has provided you with many useful tech tips and tricks. You can search for similar articles on tips and guides. Thank you for reading and for following us regularly.