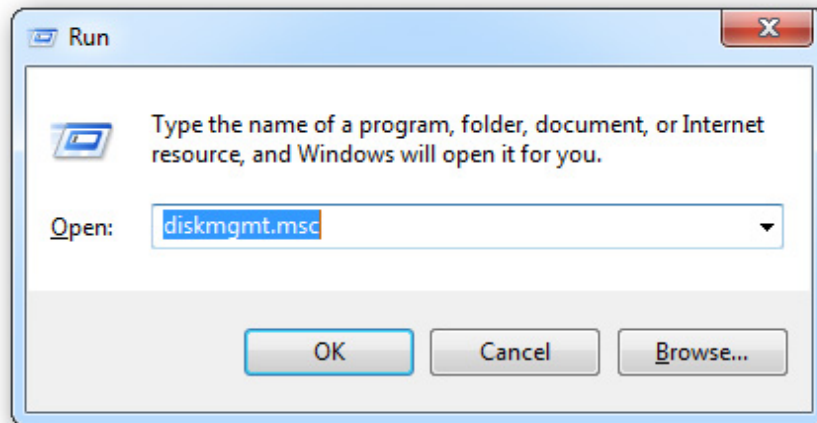


Create dualboot system with Windows 7 and 8 using VHD

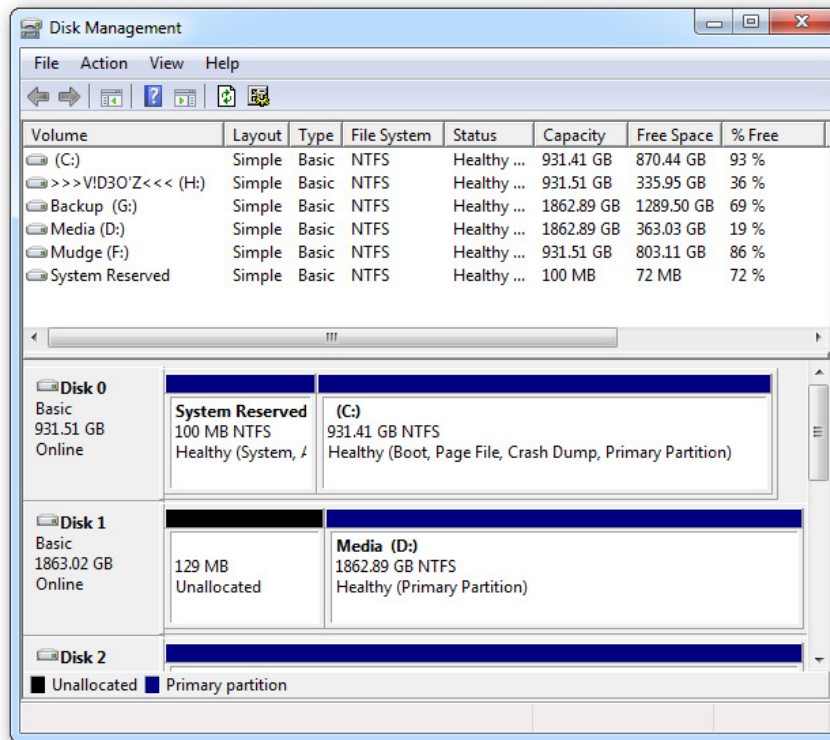
In the following article, we will show you how to create and use Virtual Hard Drive (VHD) to install and start Windows 8 on a working computer using Windows 7. Actually, in fact There are quite a few ways to do this, and the way presented below is simple and easy to implement

TipsMake.com - In the following article, we will show you how to create and use Virtual Hard Drive (VHD) to install and start Windows 8 on a working computer with Windows 7. Actually, there are actually many ways to do this, and the way presented below is the easiest and easiest to implement.

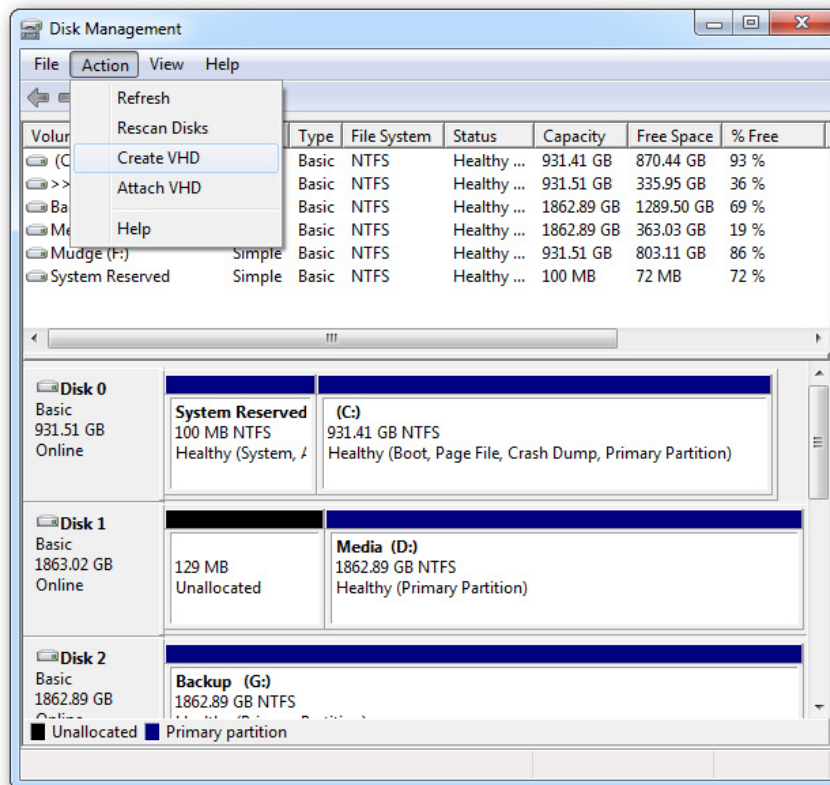
To create VHD , open **Start Menu> Run** and type **diskmgmt.msc**:



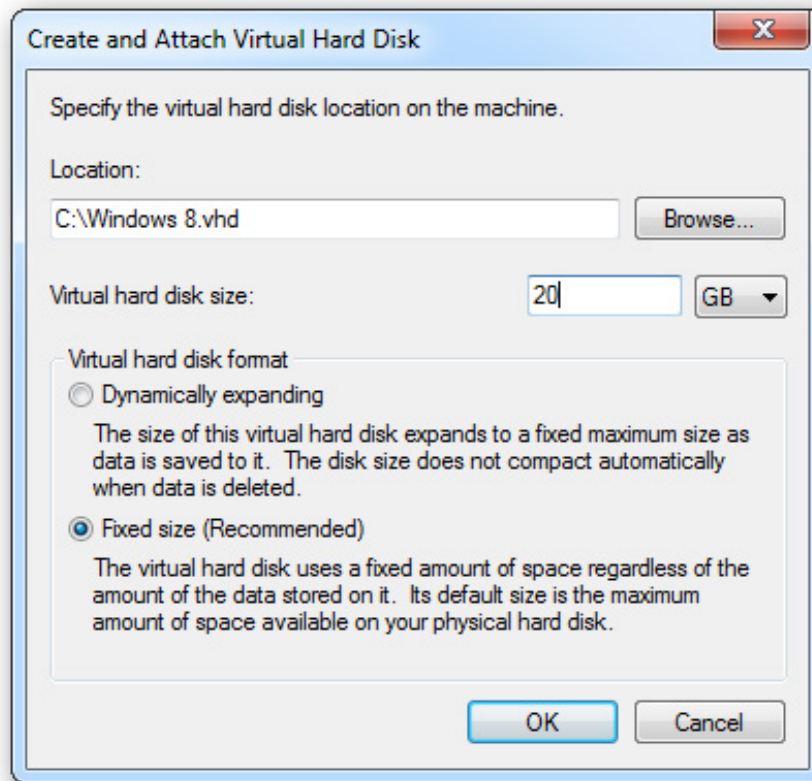
The main control panel of the **MMC** is displayed, along with **Disk Management**:



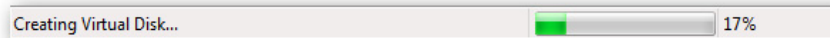
Select **Action** menu > **Create VHD**:



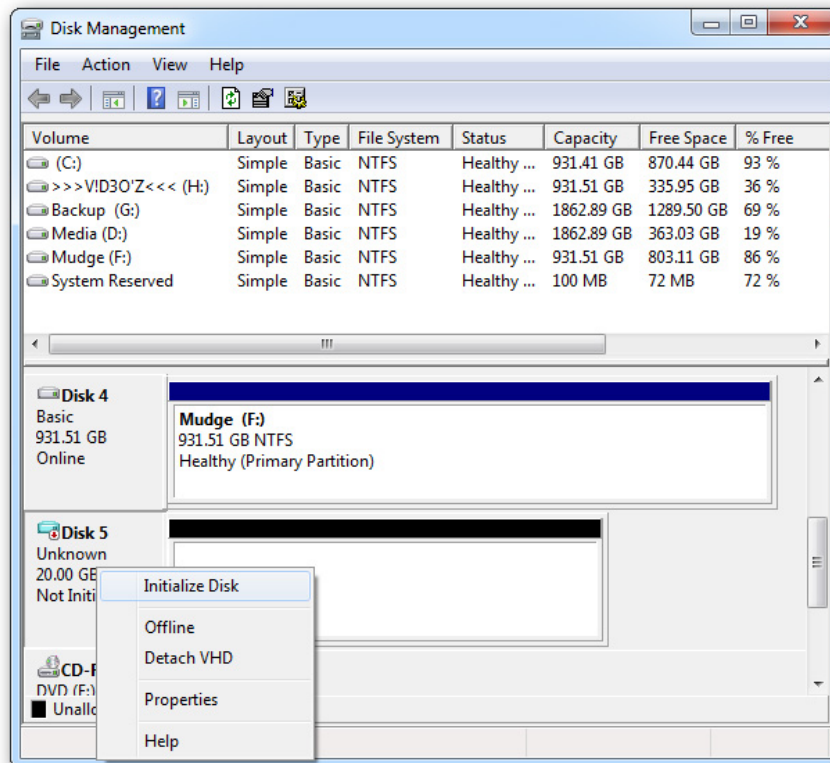
Select the archive folder of the **VHD** file and set the required capacity (minimum of **20GB**), should choose **Fixed Mode** to ensure performance:



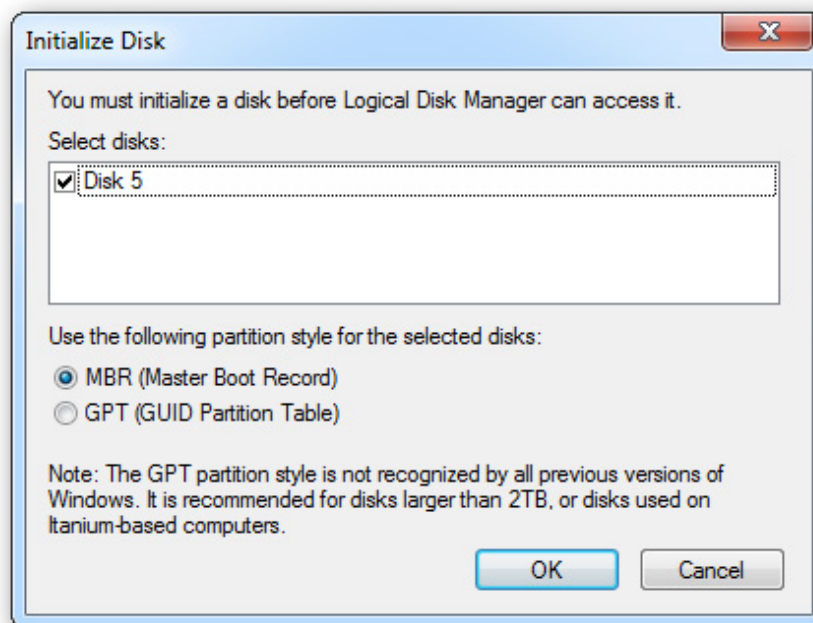
The process of creating Windows **VHD** will begin, you can monitor through the **MMC Status Bar** :



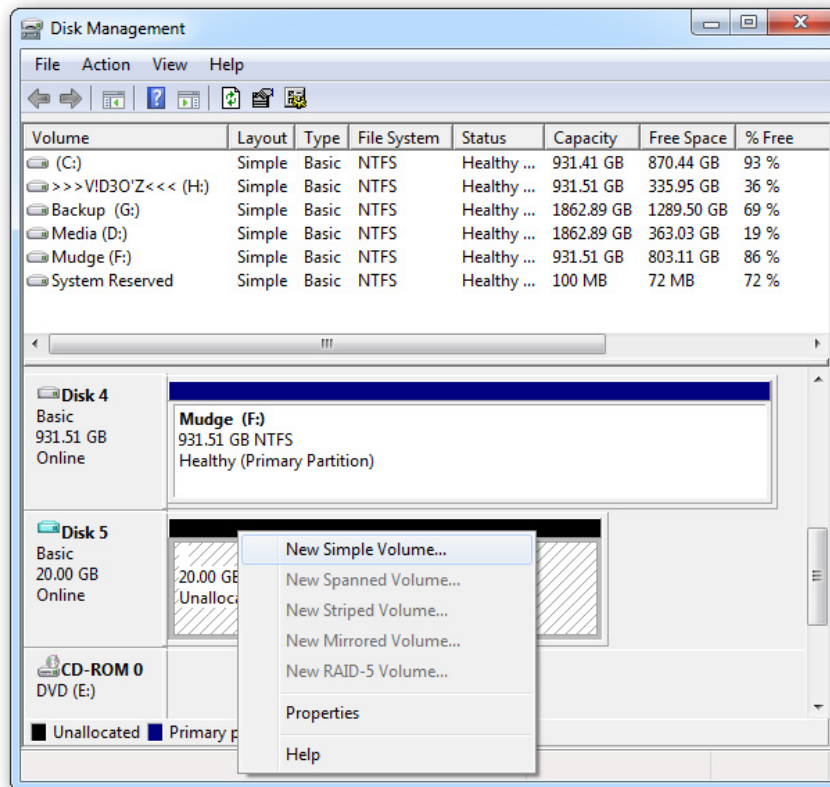
When this is done, the newly created partition will be listed in the **Disk Management** list . At this point, you need to prepare the initial settings for this partition through the **Initialize Disk** function :



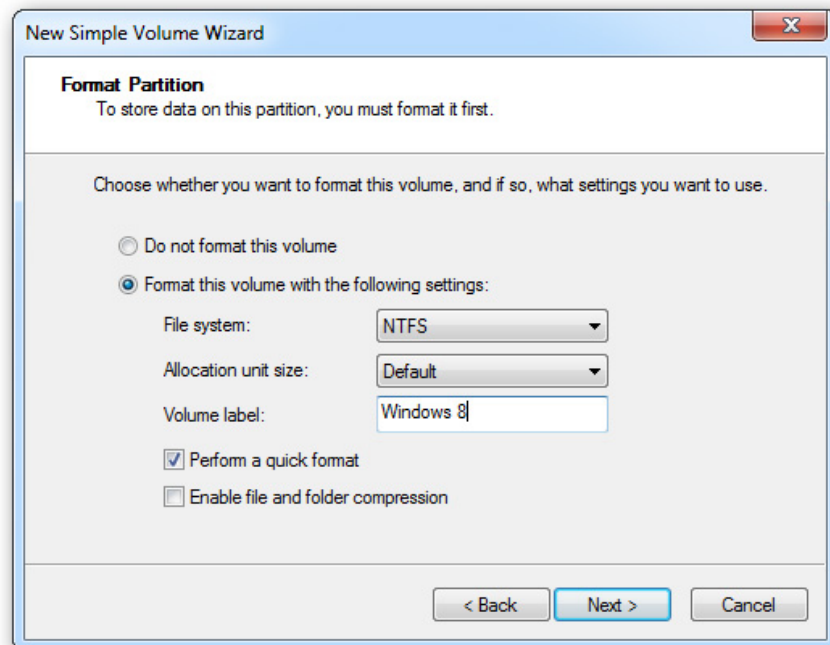
Keep the partition format as **MBR - Master Boot Record** and click **OK** :



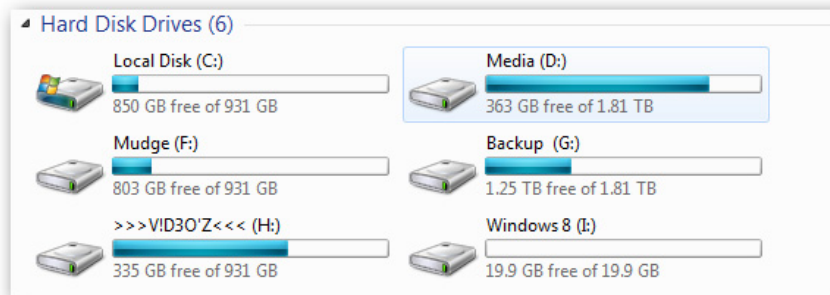
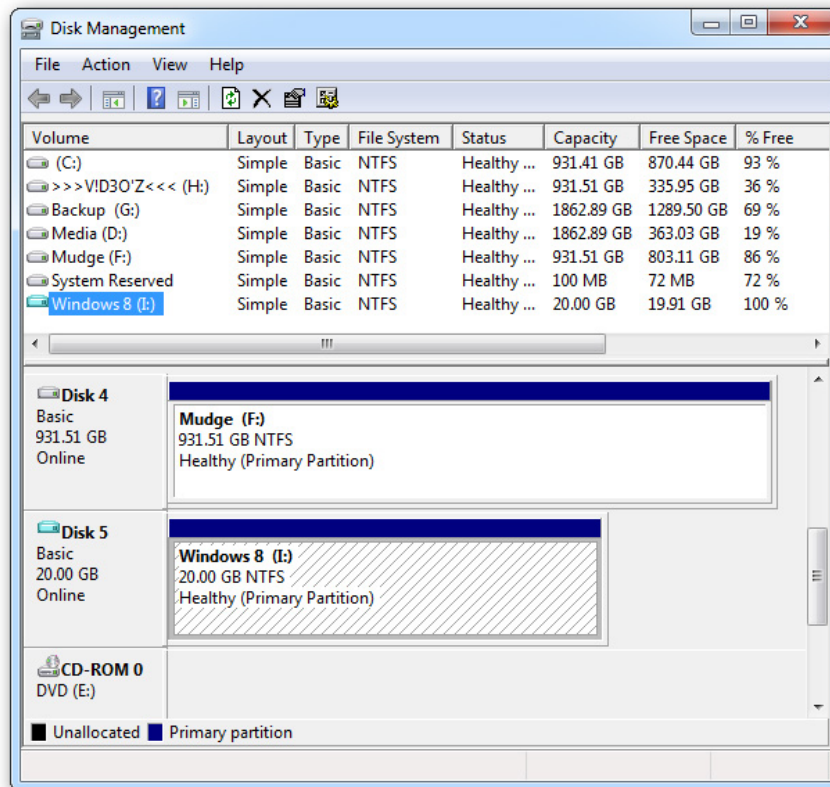
At the end of the process, we will have to create a volume on this partition, right-click on the black area and select **New Simple Volume**:



The next options are displayed, you can leave the default options unchanged, change the **Volume label** to **Windows 8** for convenience, then click **Next** and **Finish** :

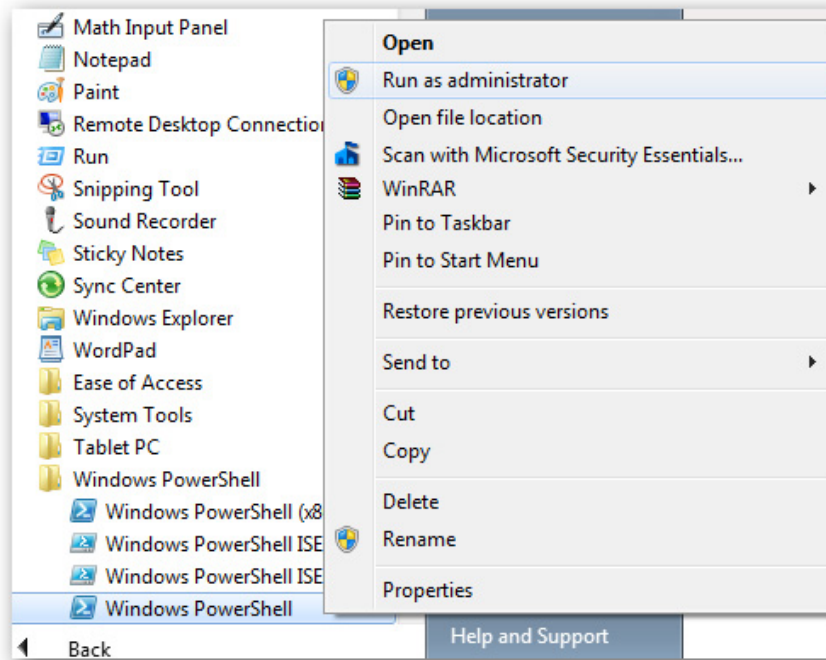


And this new **VHD** file will have functions like a real hard drive:



Install Windows 8 on the VHD partition:

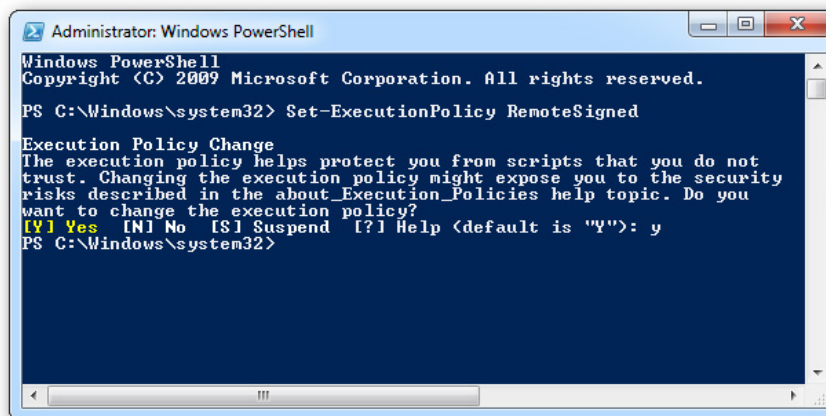
The first thing to do at this process is to open **PowerShell** via **Run As Administrator** mode (**Start Menu**> **All Programs**> **Accessories**> **Windows Powershell**):



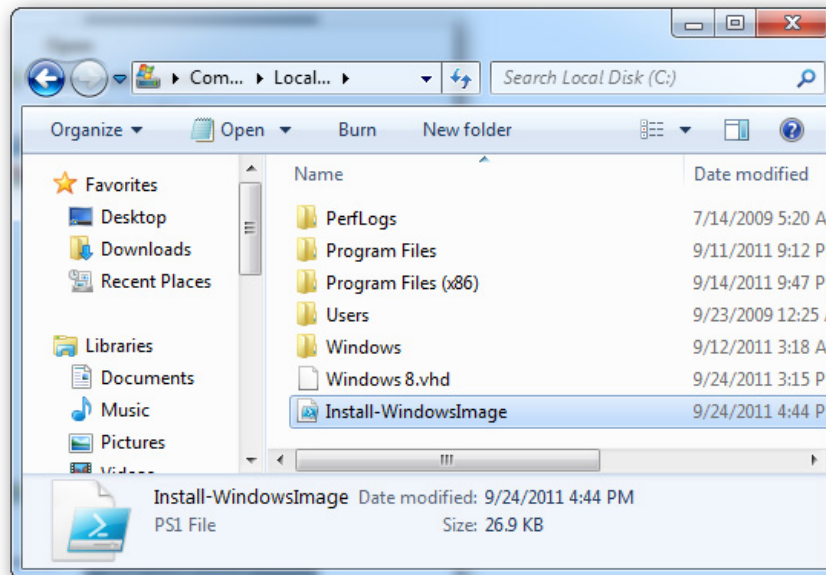
When **PowerShell** starts, we need to change some policies regarding the system's ability to execute the program to apply with some of the following code. Type the command:

Set-ExecutionPolicy RemoteSigned

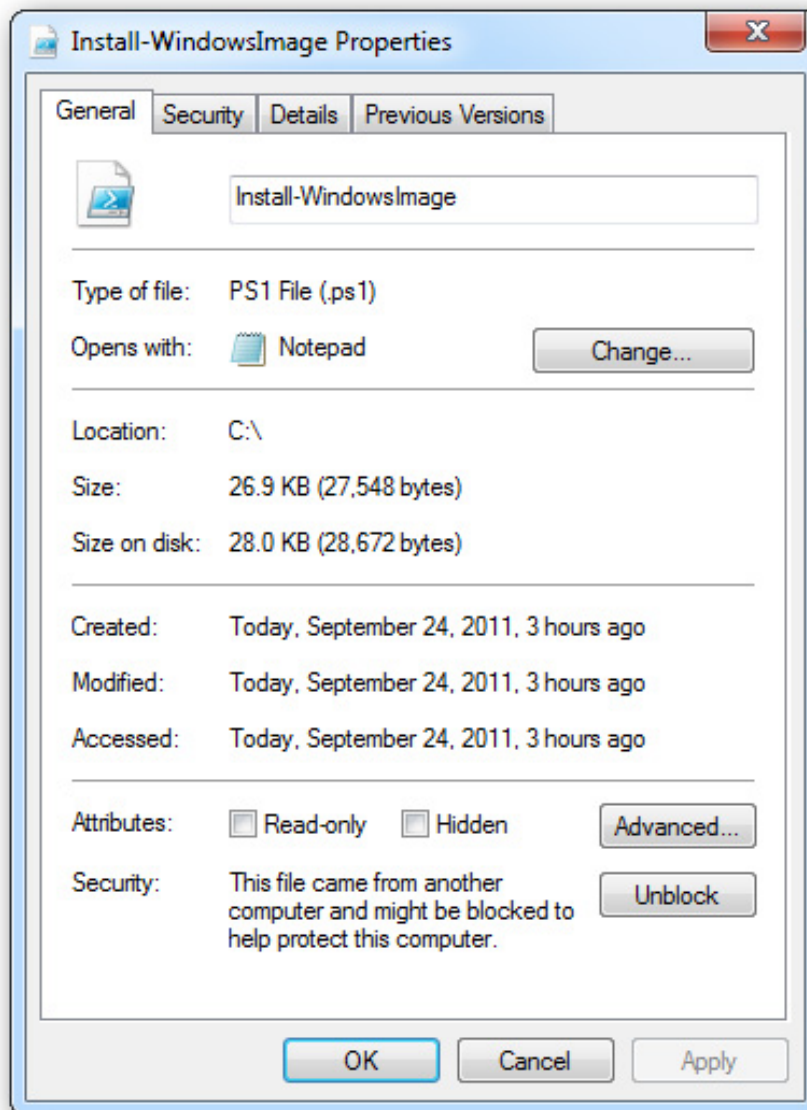
A security message will appear, press **Y** and press **Enter** to continue:



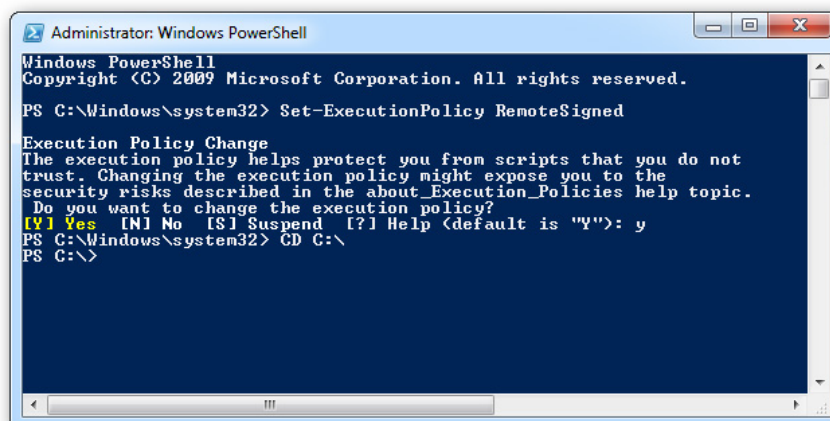
Next, please visit [here](#) and download the * **.ps1 file** , copy it to **Windows C** drive:



Open the properties - **Properties** of this * .ps1 file and click the **Unblock** button at the bottom of the window:



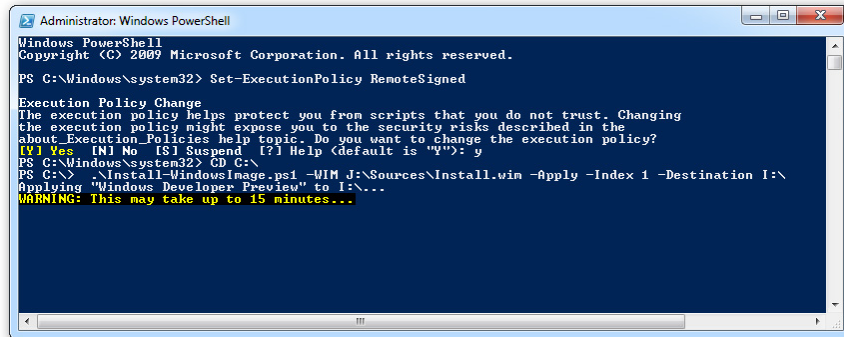
To continue, please assign the *.iso file of Windows 8 Developer Preview with a program to create any drive, such as Daemon . Then return to the main control screen of **PowerShell** , type command **CD C:**



And continue typing the following command:

.Install-WindowsImage.ps1 -WIM J: Sources\Install.wim -Apply -Index 1 -Destination I:

One point to note here is that you should replace the drive letters behind the **-WIM** parameter corresponding to the *.iso file of Windows 8, the drive to be installed (in this test I is :) is the VHD partition just created earlier:

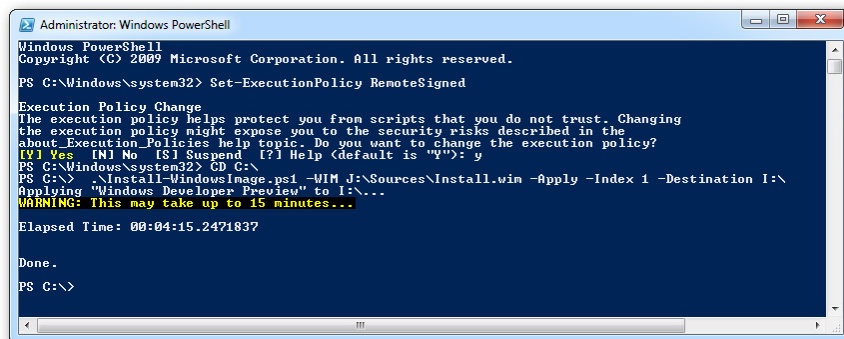


```
Administrator: Windows PowerShell
Windows PowerShell
Copyright (C) 2009 Microsoft Corporation. All rights reserved.

PS C:\Windows\system32> Set-ExecutionPolicy RemoteSigned

Execution Policy Change
The execution policy helps protect you from scripts that you do not trust. Changing
the execution policy might expose you to the security risks described in the
about Execution_Policies help topic. Do you want to change the execution policy?
[Y] Yes [N] No [S] Suspend [?] Help (default is "N"): y
PS C:\Windows\system32> CD C:\
PS C:\> .\Install-WindowsImage.ps1 -WIM J:\Sources\Install.wim -Apply -Index 1 -Destination I:\
Applying "Windows Developer Preview" to I:\...
WARNING: This may take up to 15 minutes...
```

The system will display as shown below when this process ends:



```
Administrator: Windows PowerShell
Windows PowerShell
Copyright (C) 2009 Microsoft Corporation. All rights reserved.

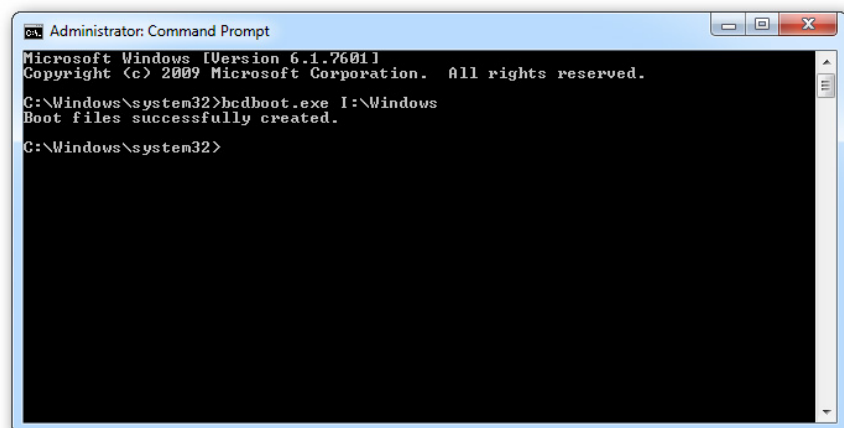
PS C:\Windows\system32> Set-ExecutionPolicy RemoteSigned

Execution Policy Change
The execution policy helps protect you from scripts that you do not trust. Changing
the execution policy might expose you to the security risks described in the
about Execution_Policies help topic. Do you want to change the execution policy?
[Y] Yes [N] No [S] Suspend [?] Help (default is "N"): y
PS C:\Windows\system32> CD C:\
PS C:\> .\Install-WindowsImage.ps1 -WIM J:\Sources\Install.wim -Apply -Index 1 -Destination I:\
Applying "Windows Developer Preview" to I:\...
WARNING: This may take up to 15 minutes...

Elapsed Time: 00:04:15.2471837

Done.
PS C:\>
```

Open the **Command Prompt** application and type **bcdboot.exe I: Windows** (drive I is the Windows 8 installation partition):

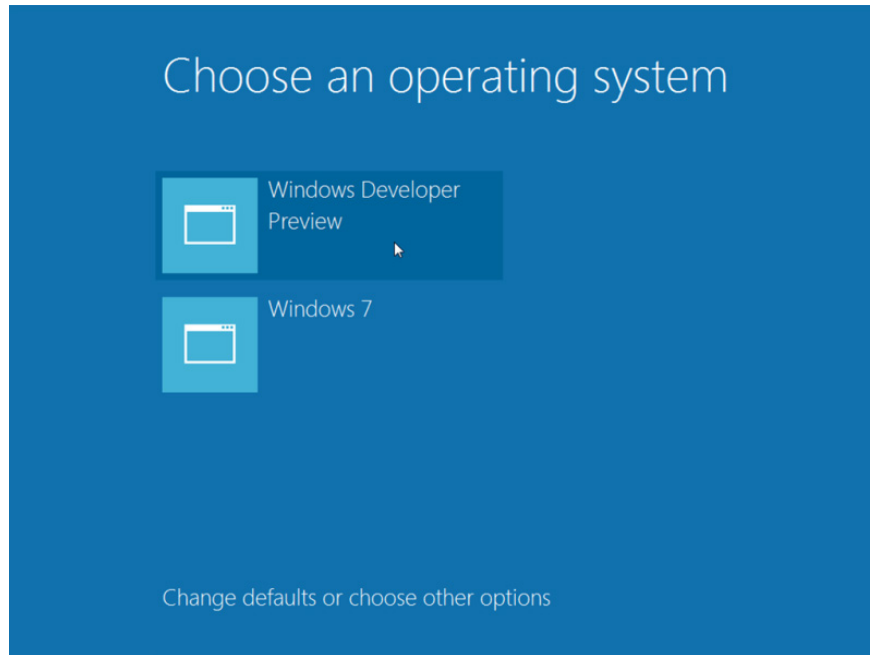


```
Administrator: Command Prompt
Microsoft Windows [Version 6.1.7601]
Copyright (c) 2009 Microsoft Corporation. All rights reserved.

C:\Windows\system32>bcdboot.exe I:\Windows
Boot files successfully created.

C:\Windows\system32>
```

From this point on, when the system starts, you will see the selection screen as follows:



Good luck!

You finished reading the article "**Create dualboot system with Windows 7 and 8 using VHD**" edited by the [TipsMake](#) team. We hope this article has provided you with many useful tech tips and tricks. You can search for similar articles on tips and guides. Thank you for reading and for following us regularly.