

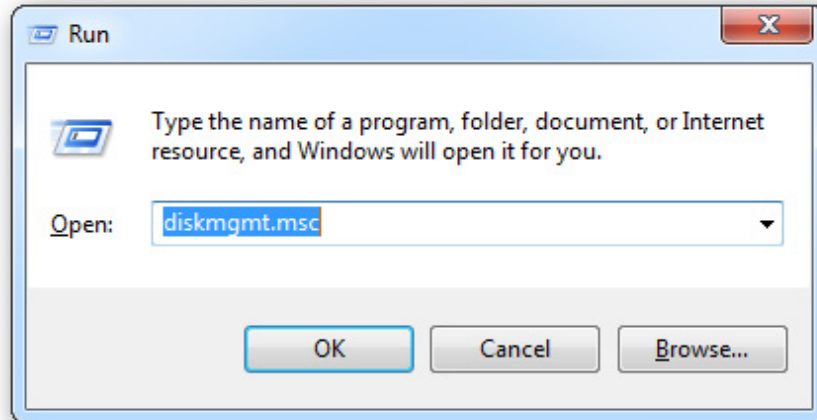
Create dual boot system of Windows 7 and Windows 8

The official appearance of Windows 8 recently has made users curious about the operating system's new features and interfaces. But make sure it takes a long time before we can 'give up' Windows 7 or XP to switch to Windows 8 ...

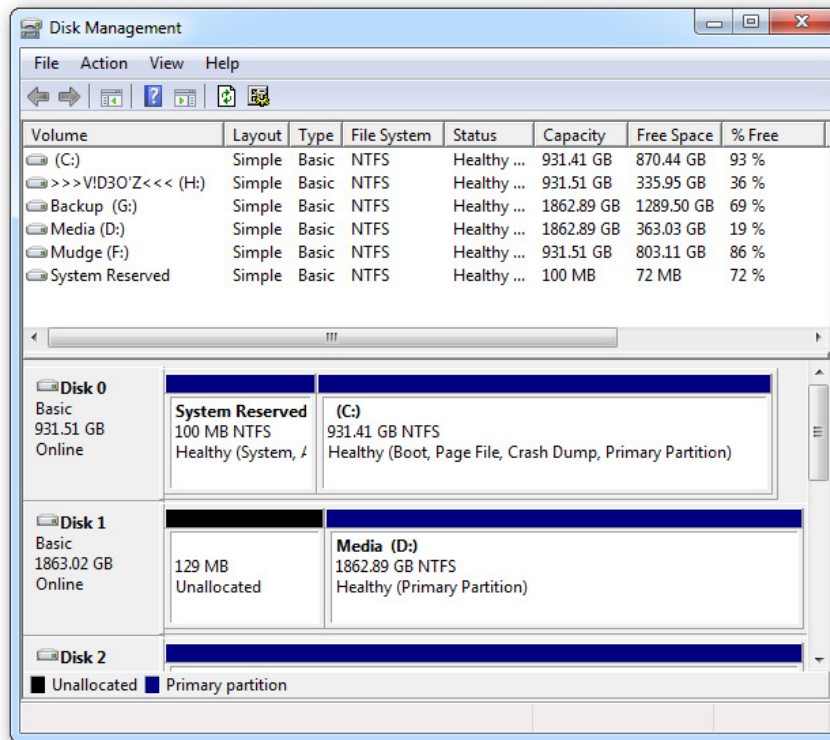
TipsMake.com - The official appearance of Windows 8 recently has made users curious about the extremely new feature system and interface of this operating system . But make sure it takes a long time before we can "give up" Windows 7 or XP to switch to Windows 8. In the following article, we will show you how to create a dual boot system between Windows 7 and 8 in a very simple and easy way.

1. Create VHD:

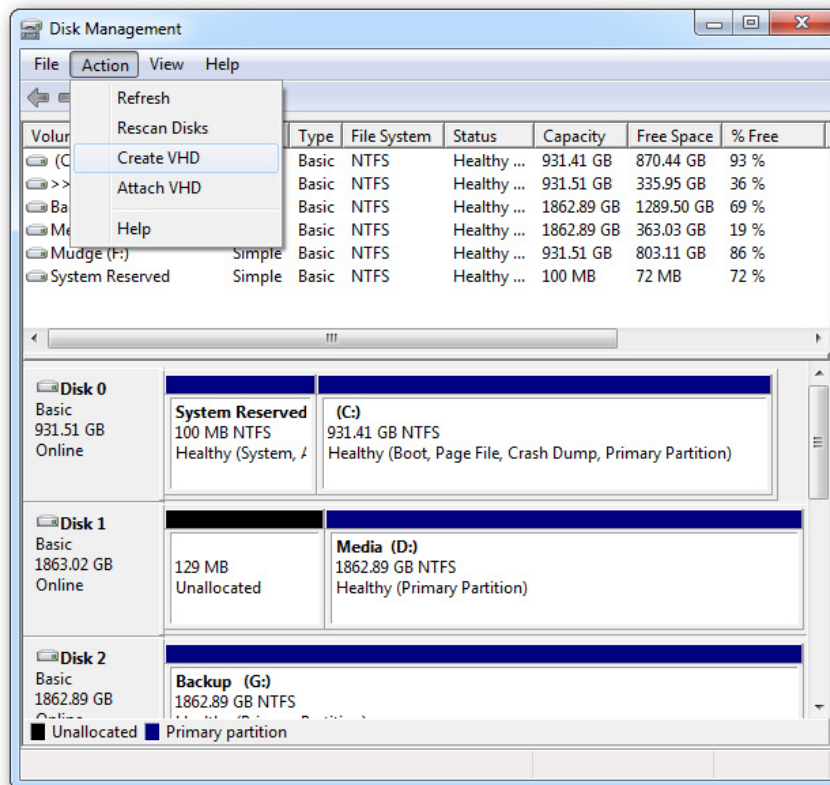
To do this, open **Run** (**Windows + R**), type **diskmgmt.msc** and press **Enter** :



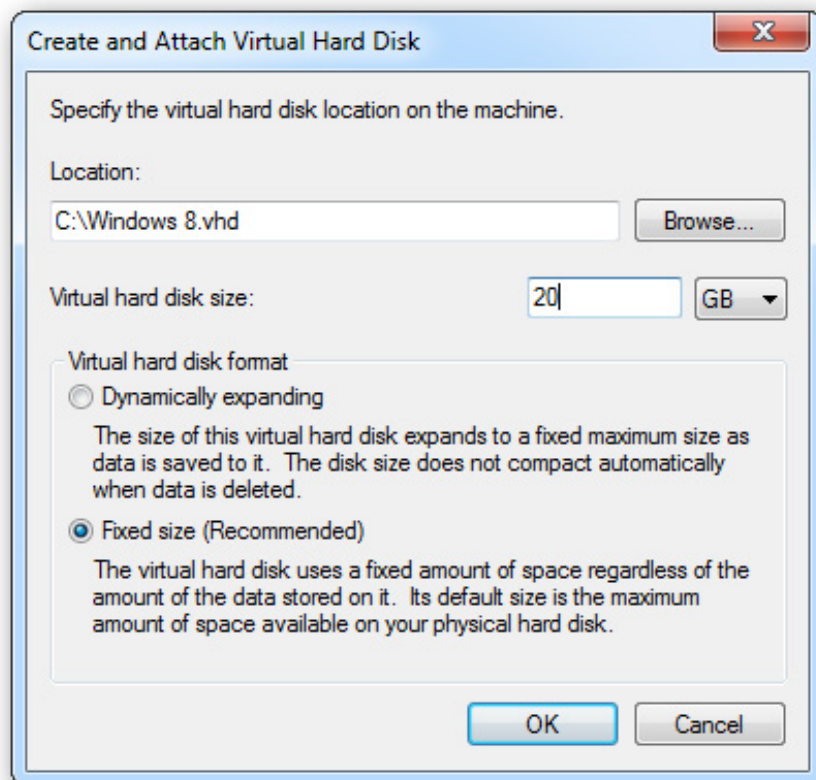
The **MMC** control panel displays, and here you will see the included **Disk Management** utility:



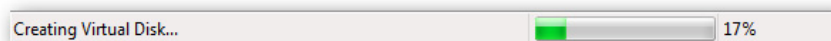
And to create a new VHD, click the **Action** menu on the Toolbar, then select **Create VHD** :



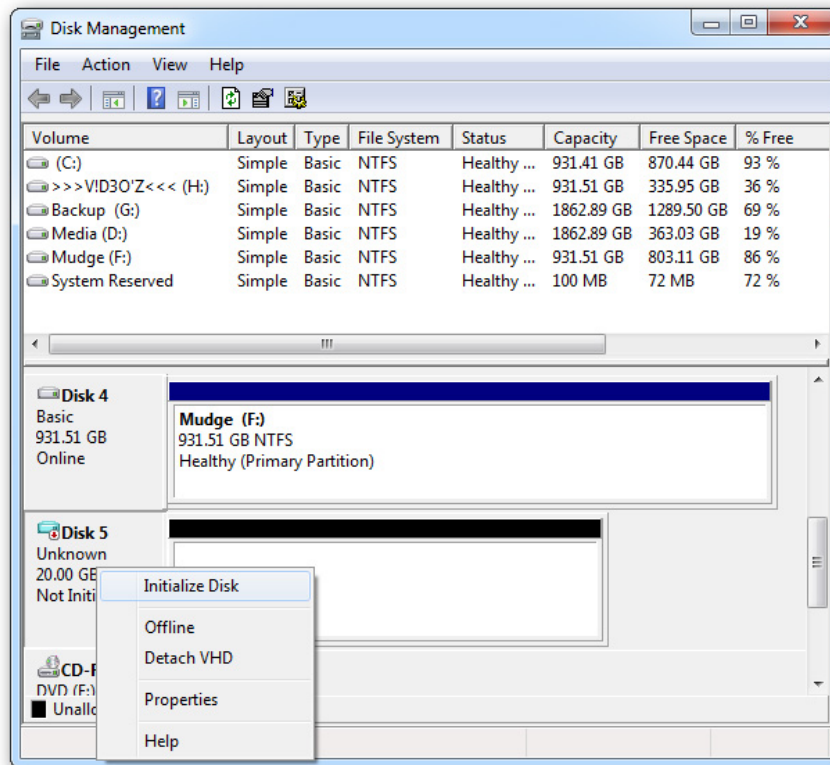
Select the archive folder for the VHD file, initialize the initial capacity (minimum of 20 GB), and you should select **Fixed Size** mode to increase performance:



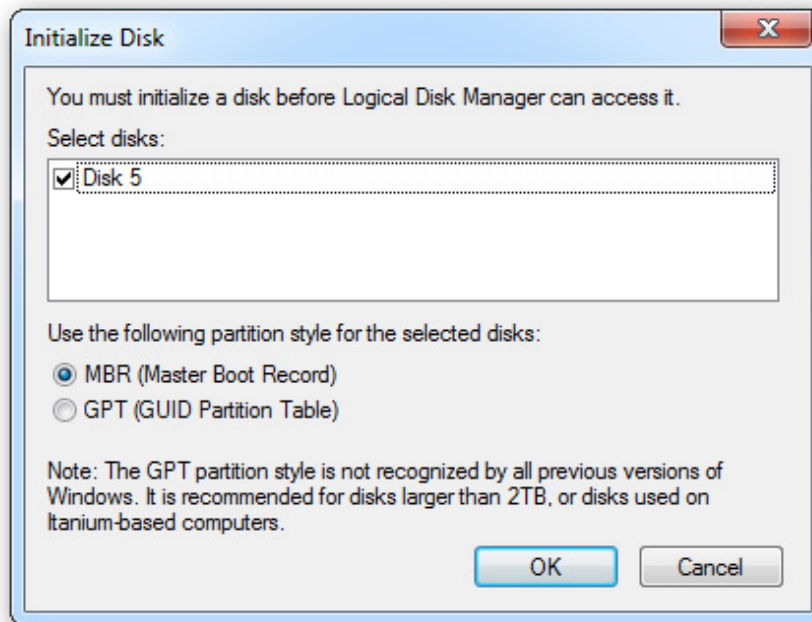
After that, **Windows** will proceed to create **VHD** file. The process of this process will be displayed fully and accurately on the **Status Bar** of the **MMC snap-in** :



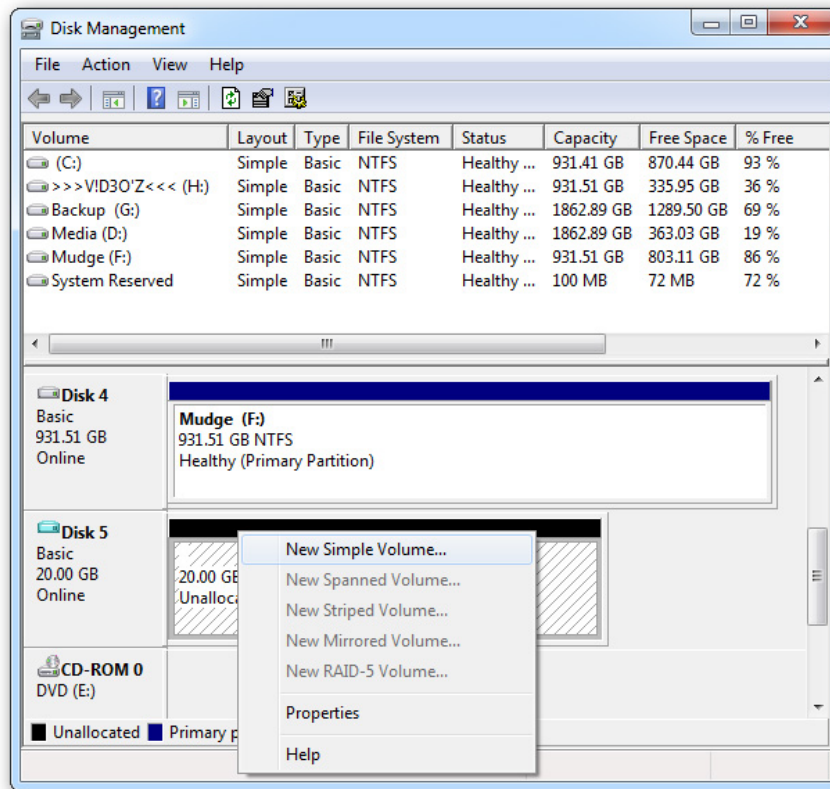
When finished, this virtual hard drive file will be listed in the **Partition** list in the **Disk Management** window. Right-click the **VHD** file and select **Initialize Disk** :



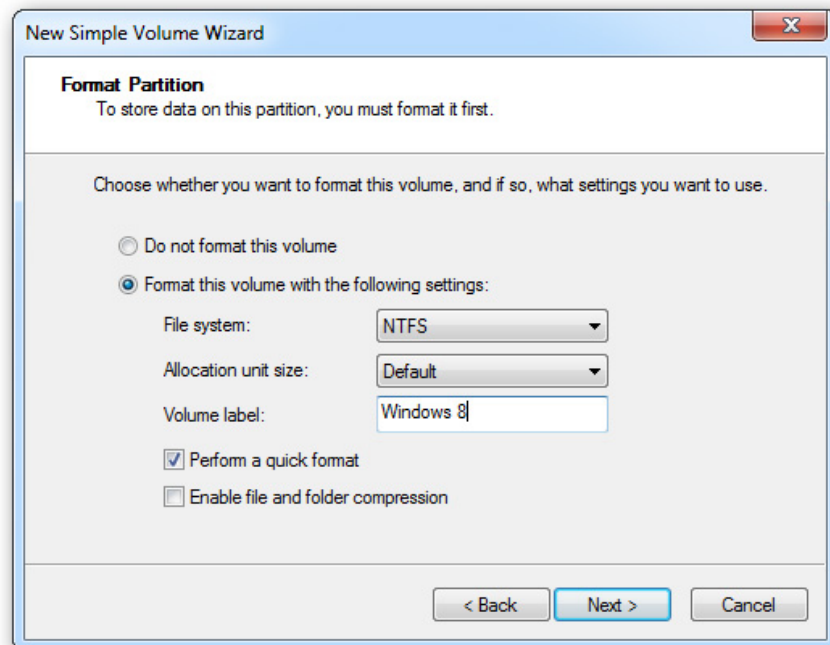
Keep the **MBR (Master Boot Record)** mode intact and click **OK** :



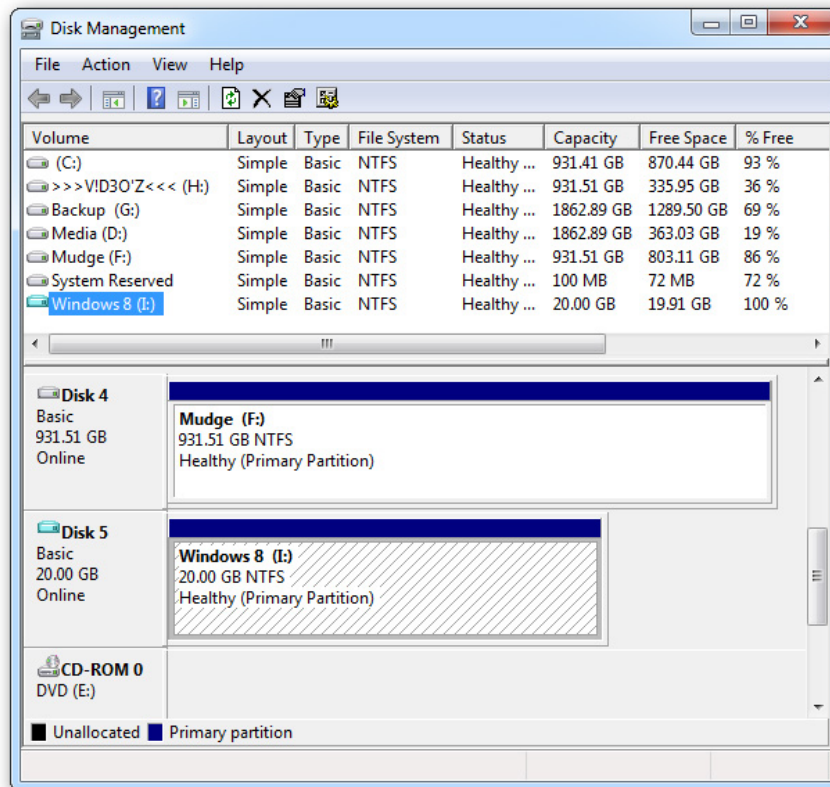
The next step here is to create **Volume** on that partition. Right-click on the black partition and select **New Simple Volume**:



Keep the default options in the Wizard window displayed next, you can change the **Volume** to Windows 8, then click **Next**> **Finish** to finish:

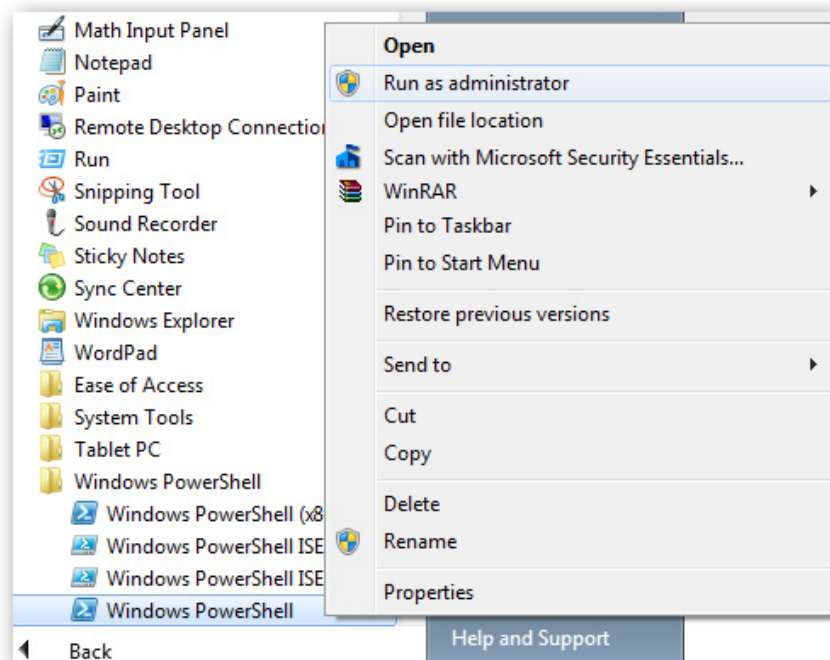


And our VHD file can act as a real hard drive partition:

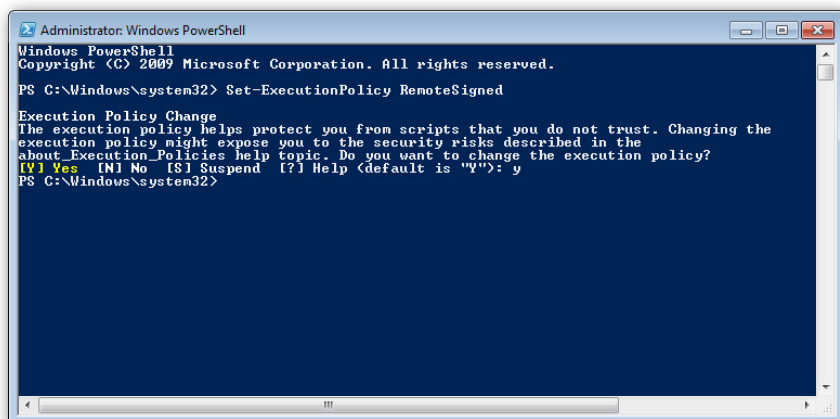


2. Install Windows 8 on the VHD partition:

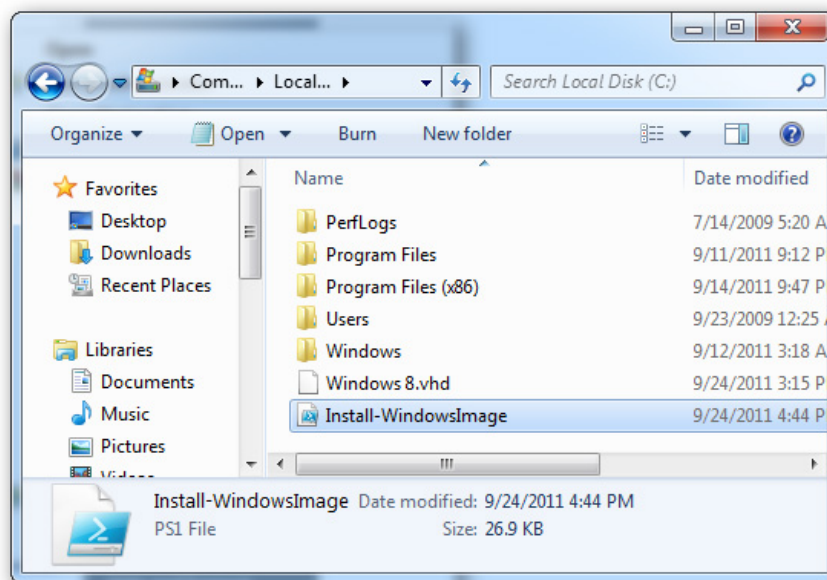
The first thing to do here is to open **PowerShell** (**Start Menu**> **All Programs**> **Accessories**> **Windows Powershell**) under **Administrator** :



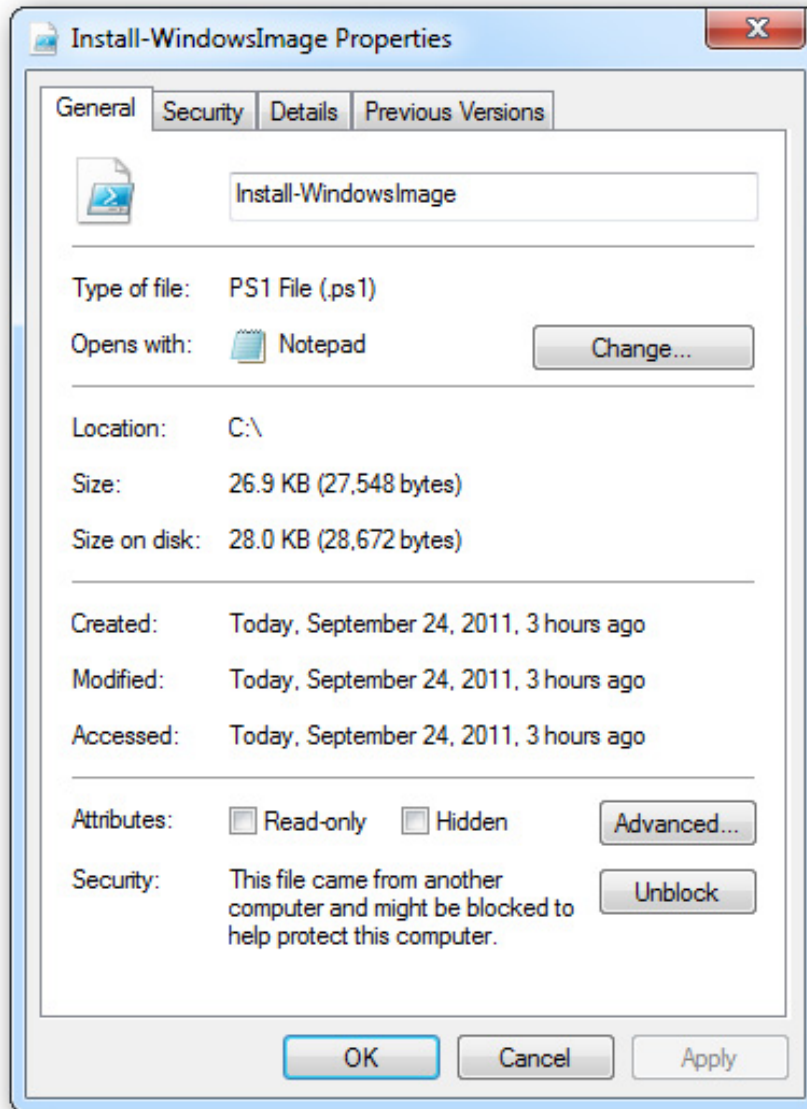
When **PowerShell** starts, you need to change the execution policy to allow the user account to run the necessary script. Type the command '**Set-ExecutionPolicy RemoteSigned** ', the system will display a message with many options, press **Y** and press **Enter** to confirm. And after that, keep the **PowerShell** window as it was:



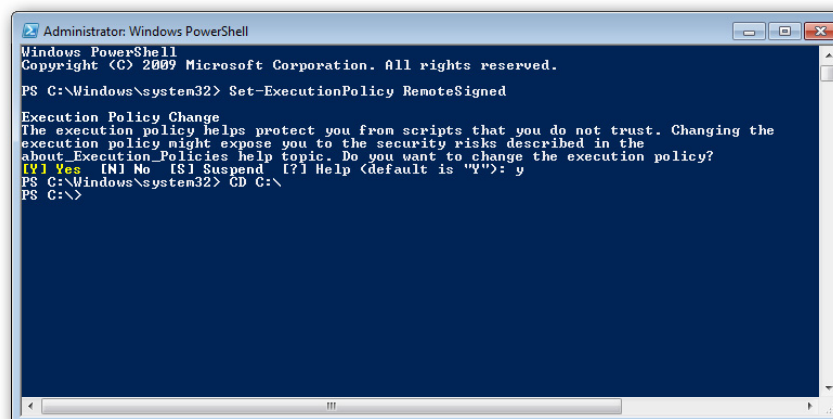
Next, download the **Install-WindowsImage.ps1** code directly from Microsoft or at MediaFire, then copy to drive C or any other folder on the hard drive:



Right-click on the file and select **Properties** , click **Unblock** button as shown below:



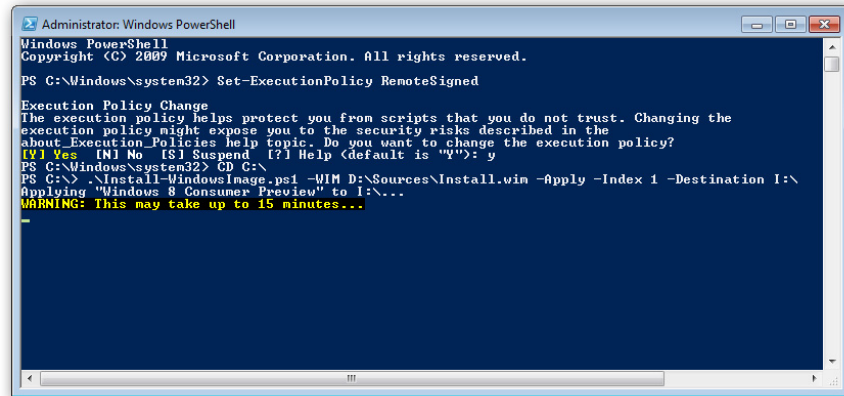
And combine the * .ISO file of **Windows 8 Consumer Preview**, download it here, then go back to **PowerShell** and type the command ' **CD C:** '



Next, type in the following command:

```
.Install-WindowsImage.ps1 -WIM D: Sources\Install.wim -Apply -Index 1 -Destination I:
```

You should pay attention and replace the drive letter with the character in this test (behind the **-WIM** parameter). Then press Enter:

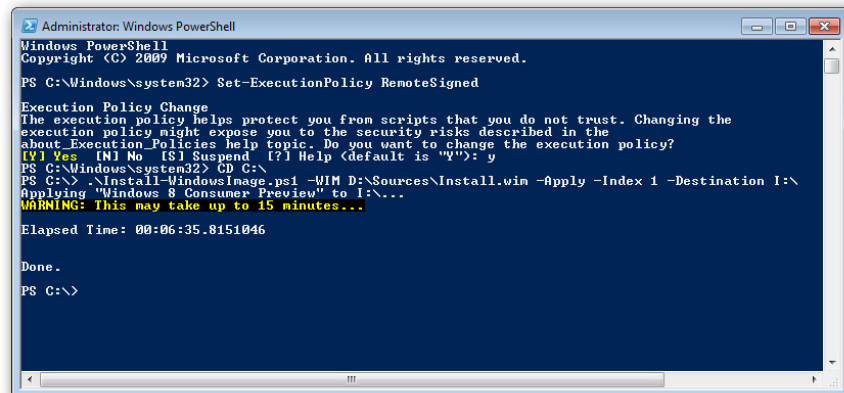


```
Administrator: Windows PowerShell
Windows PowerShell
Copyright (C) 2009 Microsoft Corporation. All rights reserved.

PS C:\Windows\system32> Set-ExecutionPolicy RemoteSigned

Execution Policy Change
The execution policy helps protect you from scripts that you do not trust. Changing the
execution policy might expose you to the security risks described in the
about_Execution_Policies help topic. Do you want to change the execution policy?
[Y] Yes [N] No [S] Suspend [?] Help (default is "Y"): y
PS C:\Windows\system32> CD C:\
PS C:\> .\Install-WindowsImage.ps1 -WIM D:\Sources\Install.wim -Apply -Index 1 -Destination I:\
Applying "Windows 8 Consumer Preview" to I:\...
WARNING: This may take up to 15 minutes...
-
```

The drive E here is the VHD partition created in the previous step
When completed, the system will display the message as shown below:



```
Administrator: Windows PowerShell
Windows PowerShell
Copyright (C) 2009 Microsoft Corporation. All rights reserved.

PS C:\Windows\system32> Set-ExecutionPolicy RemoteSigned

Execution Policy Change
The execution policy helps protect you from scripts that you do not trust. Changing the
execution policy might expose you to the security risks described in the
about_Execution_Policies help topic. Do you want to change the execution policy?
[Y] Yes [N] No [S] Suspend [?] Help (default is "Y"): y
PS C:\Windows\system32> CD C:\
PS C:\> .\Install-WindowsImage.ps1 -WIM D:\Sources\Install.wim -Apply -Index 1 -Destination I:\
Applying "Windows 8 Consumer Preview" to I:\...
WARNING: This may take up to 15 minutes...

Elapsed Time: 00:06:35.8151046

Done.
PS C:\>
```

Then, open the **Command Prompt** and type **bcdboot.exe I: Windows** (assuming that I is a **Windows 8** drive):

```
Administrator: Command Prompt
Microsoft Windows [Version 6.1.7601]
Copyright (c) 2009 Microsoft Corporation. All rights reserved.

C:\Windows\system32>bcdboot.exe I:\Windows
Boot files successfully created.

C:\Windows\system32>
```

And when the system boots the next time, Windows will display the new operating system selection screen as shown below:

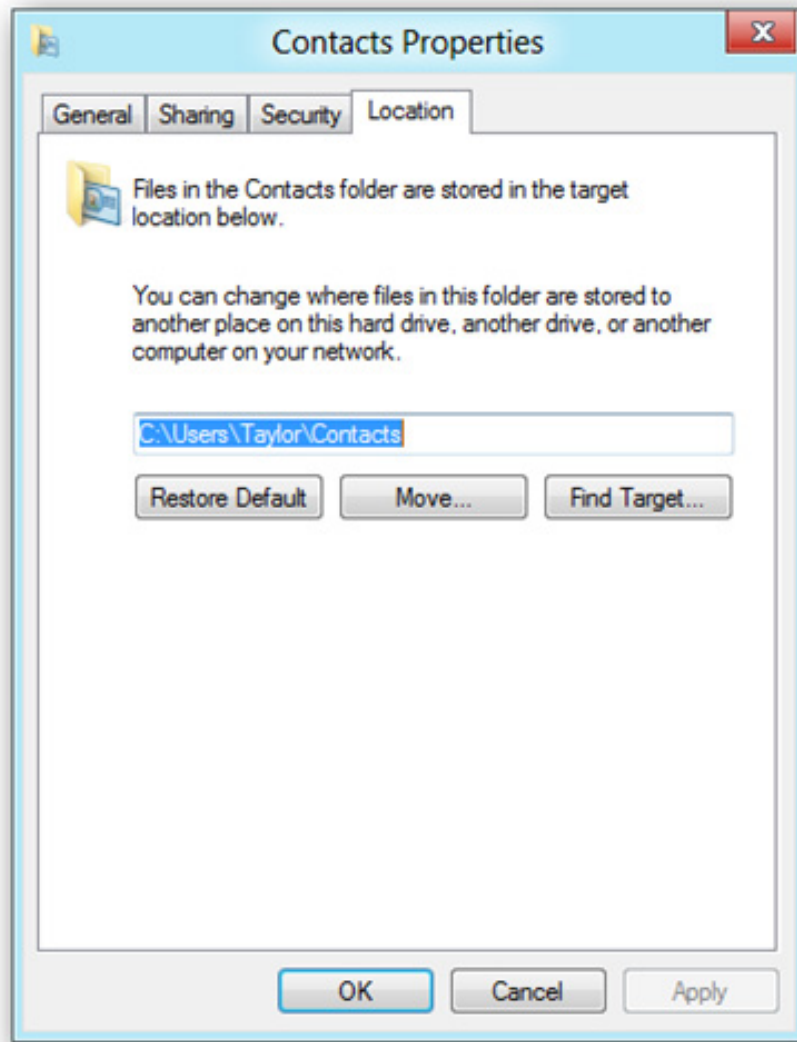


3. Data sharing:

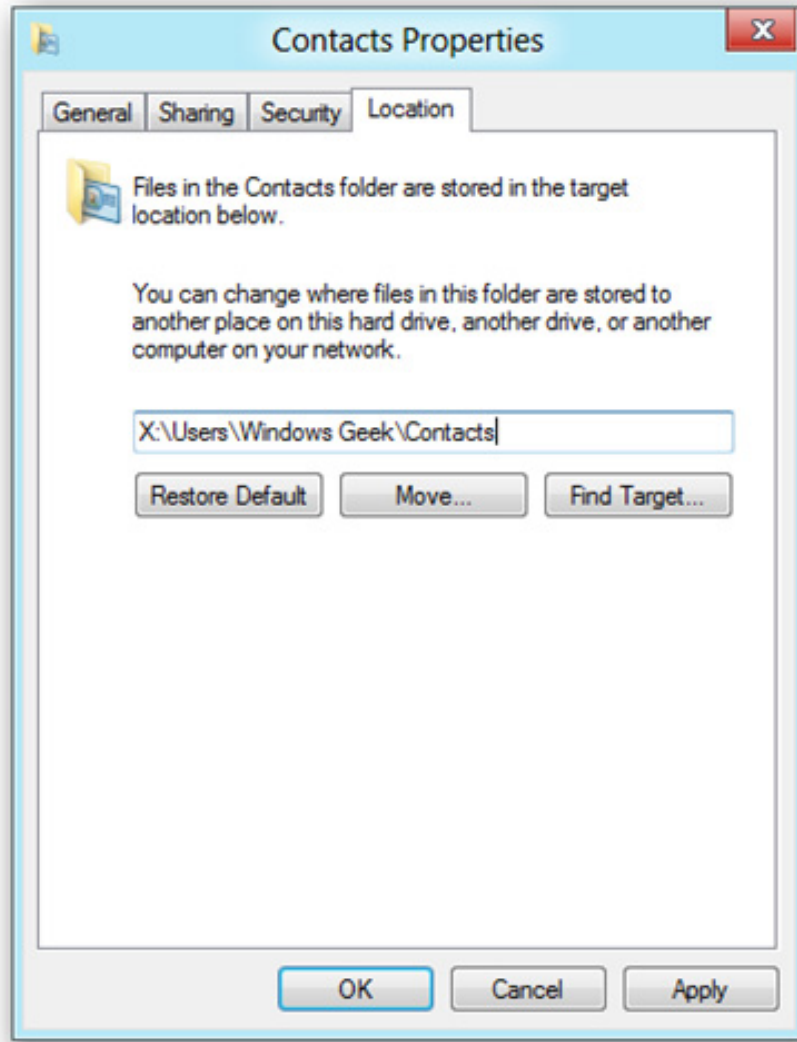
The last thing to do here is to change the file usage and sharing mode between the two operating systems. To boot directly into the **Windows 8** installation process, you go to the account directory under the path:

C: Users [Account name]

Right-click the **Contacts** folder and select **Properties** from **Context Menu** , select the **Location** tab and click the **Move** button:



Next, move to the **Contacts** folder on the partition containing **Windows 7**:



Click OK, and the system will automatically transfer data between the two locations. You just need to do this again with the following folders: **Desktop, Downloads, Favorites, Links, My Documents, My Music, My Pictures and My Videos** . Very simple and easy, wish you success!

You finished reading the article "**Create dual boot system of Windows 7 and Windows 8**" edited by the [TipsMake](#) team. We hope this article has provided you with many useful tech tips and tricks. You can search for similar articles on tips and guides. Thank you for reading and for following us regularly.