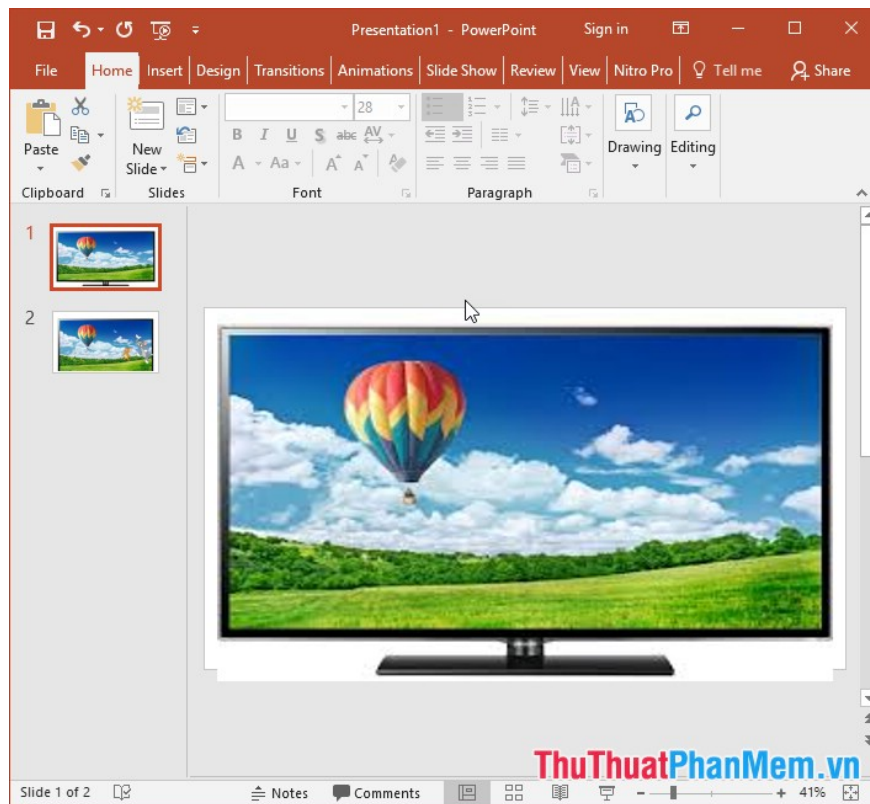


Create and use animation effects in PowerPoint

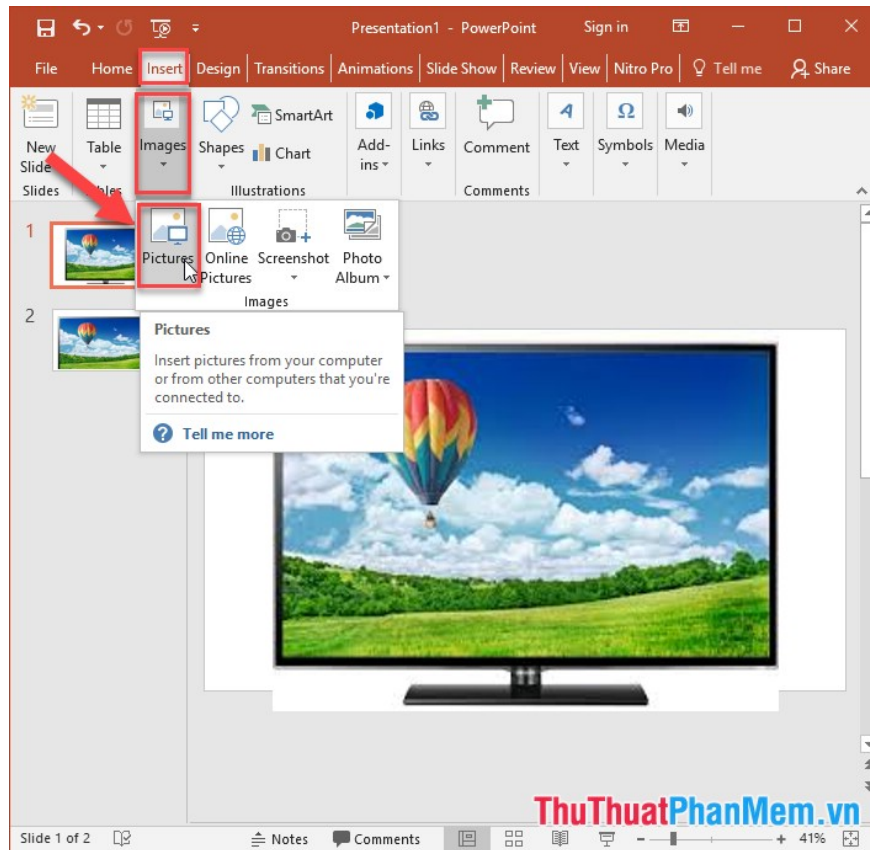
Create and use animation effects in PowerPoint. Step 1: To create the effect you first need to create a background for the animated object:

The following article details you how to create and use animation effects in PowerPoint.

Step 1: To create the effect you first need to create a background for the animated object:



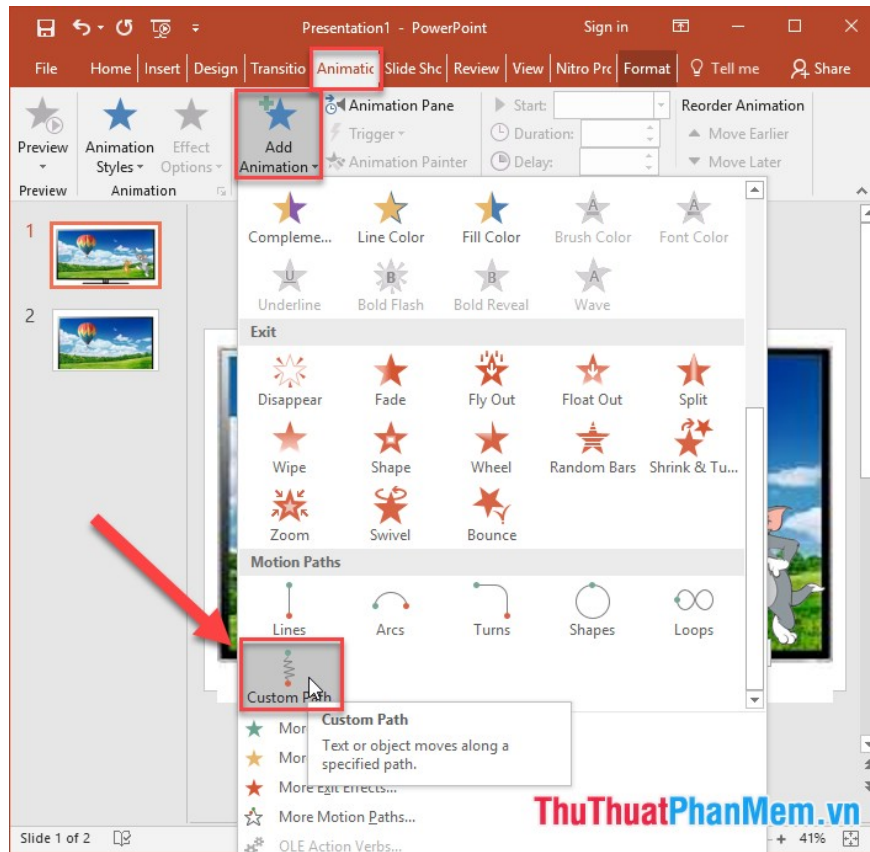
Step 2: Go to the **Insert** tab -> **Images** -> **Pictures** to select an image as an animated object:



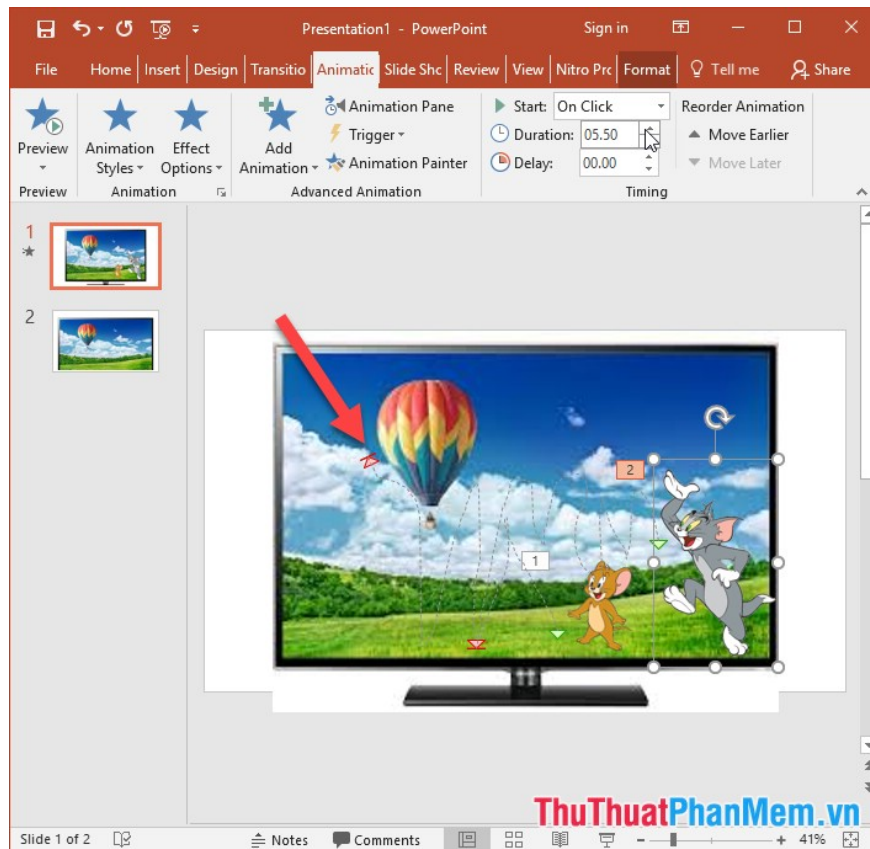
As a result you have inserted animated objects, a small note to create animated objects you should choose objects without background:



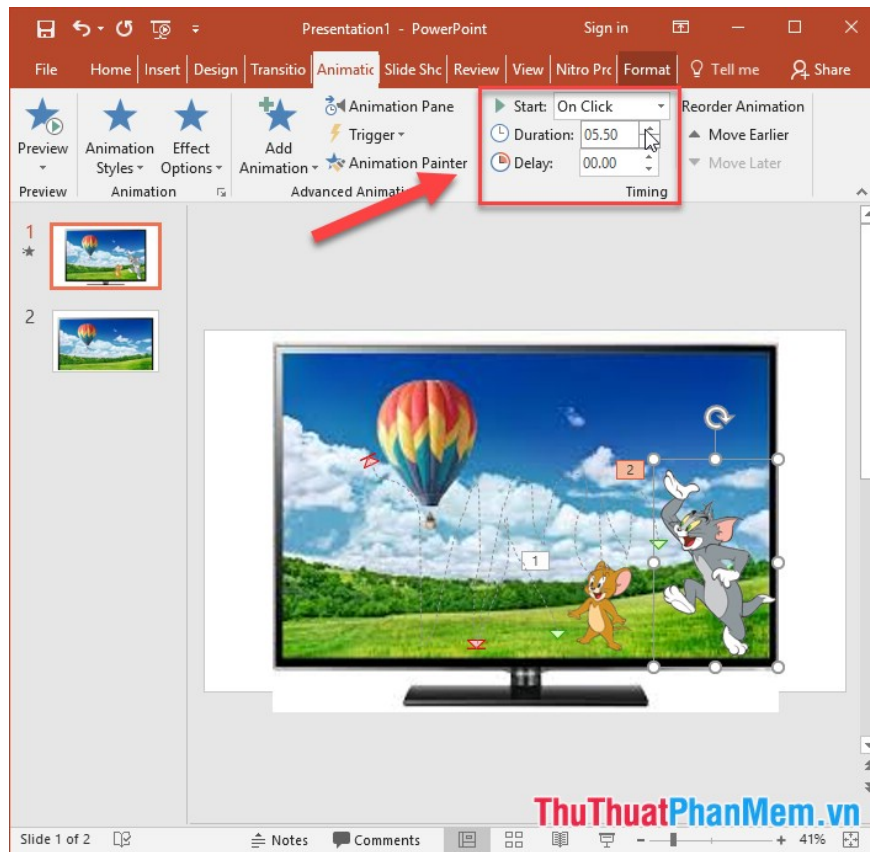
Step 3: Click on the object -> go to the **Animations** tab -> **Add Animation** -> **Custom Path** .



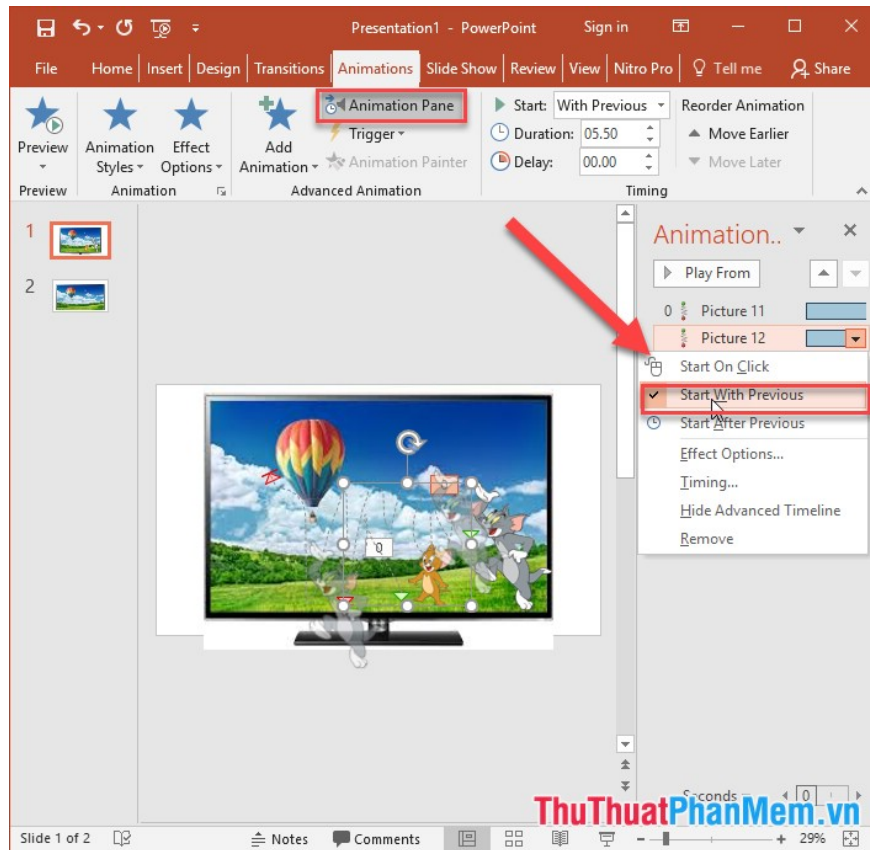
Step 4: Create moving points for the object:



Step 5: Adjust the effect time, because the default is 2 minutes, the object moves very fast, you should adjust for the slower moving object:



Because there are 2 objects here, you should select these two objects to move together by clicking **Animation Pane** in **Animation** tab -> click on the object under **Start with previous** to let the two objects run the effect together:



The result has created animation effects for 2 objects:



The above is a detailed guide on how to create and use animation effects in PowerPoint.

Good luck!

You finished reading the article "**Create and use animation effects in PowerPoint**" edited by the [TipsMake](#) team. We hope this article has provided you with many useful tech tips and tricks. You can search for similar articles on tips and guides. Thank you for reading and for following us regularly.

