

Create advanced Panorama images with Microsoft Image Composite Editor

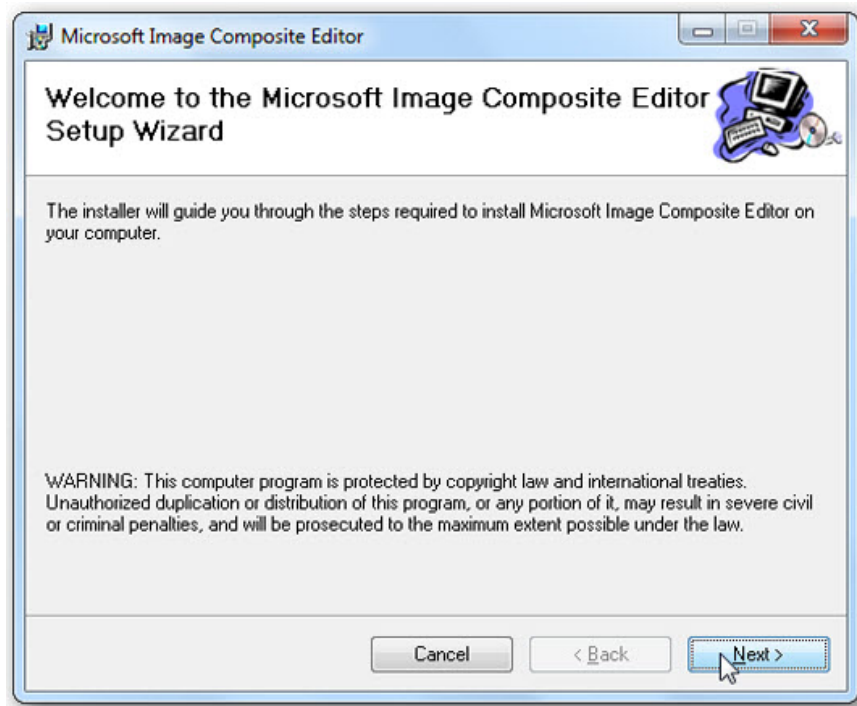
TipsMake.com will continue to introduce how to create advanced Panorama photos with the free utility Microsoft Image Composite Editor

QTM - In the previous post, TipsMake.com introduced you how to create Panorama photo with Live Photo Gallery program . Now, we continue to show you how to create advanced Panorama photos with the free Microsoft Image Composite Editor utility.

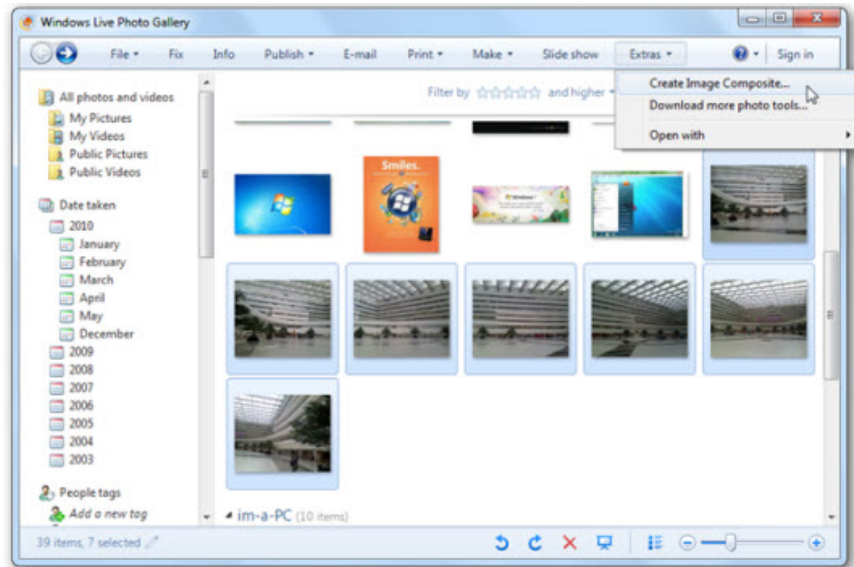
Microsoft Image Composite Editor download path

Begin

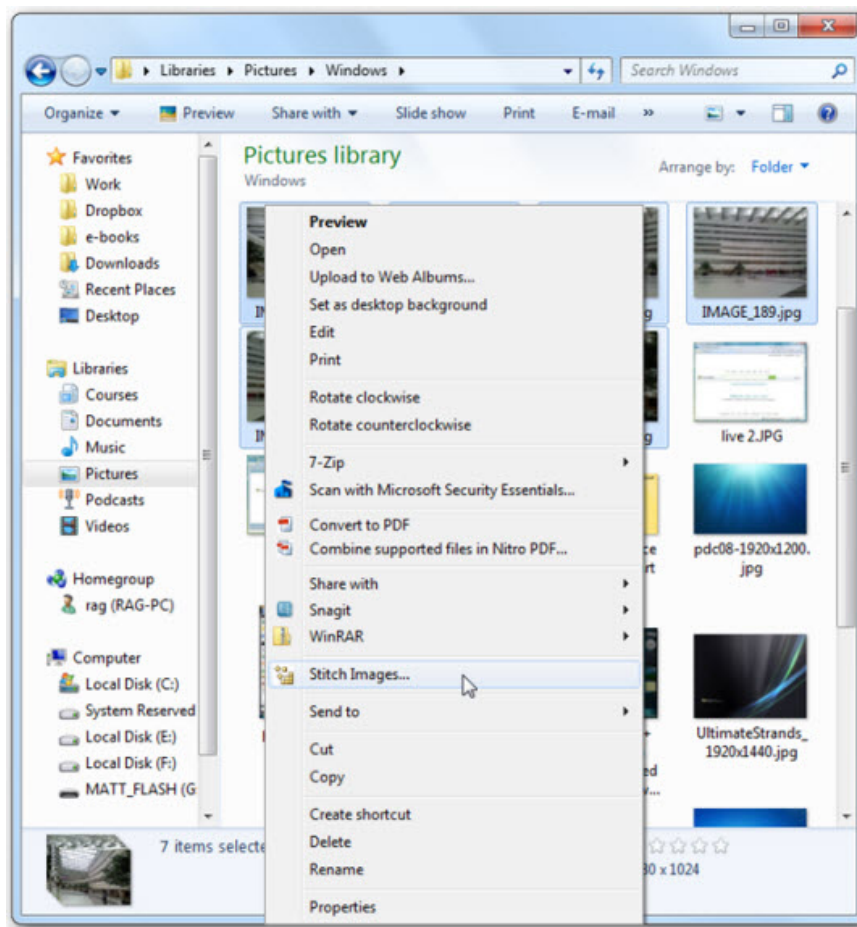
First, you need to download the Microsoft Image Composite Editor version suitable for your operating system (Windows XP, Vista and 7, 32 or 64 bit). Then proceed to the normal installation:



After successfully installing Microsoft Image Composite Editor, you will see the program automatically integrates with Live Photo Gallery. Open Live Photo Gallery, select some sample elements, click on the **Extras** > **Create Image Composite** tool:

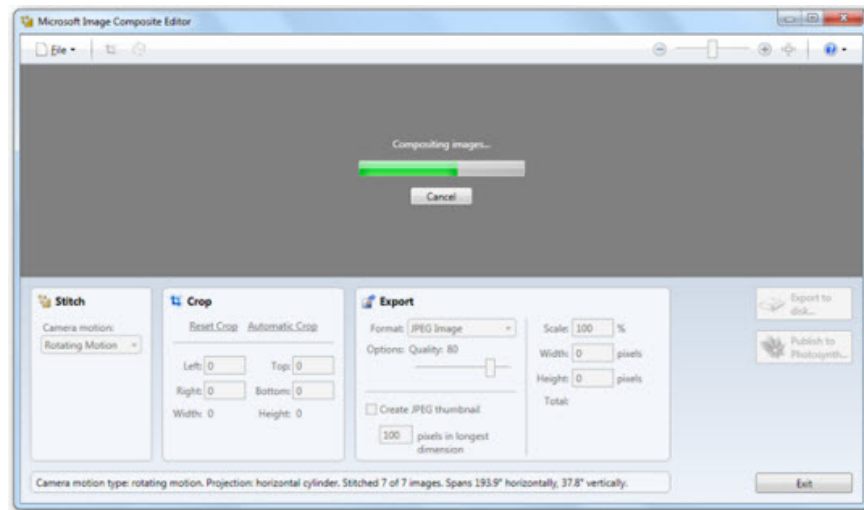


Or you can do this directly in the Windows Explorer window by right-clicking on the pictures and selecting **Stitch Images** . :



Or more simply, start Image Composite Editor and drag and drop images into the main work window, the program will automatically analyze and combine those photos together. Through this feature, we have realized

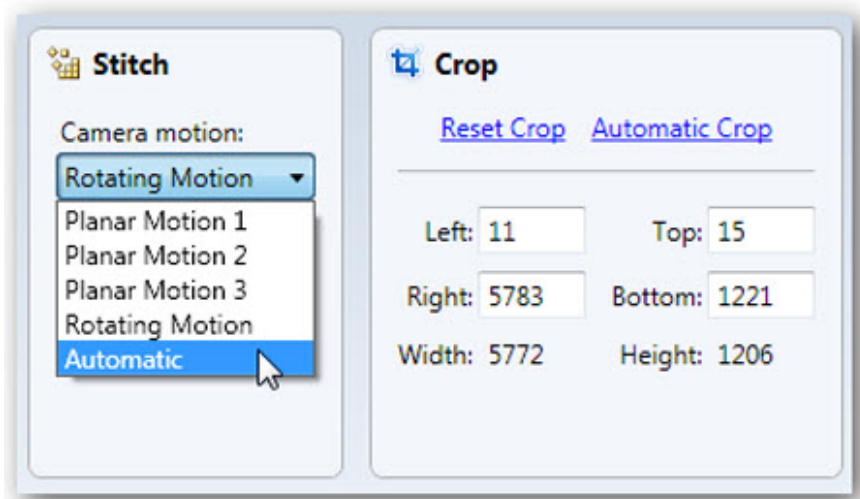
the difference in how to work, faster speed, more functions than other panorama applications such as Live Photo Gallery:



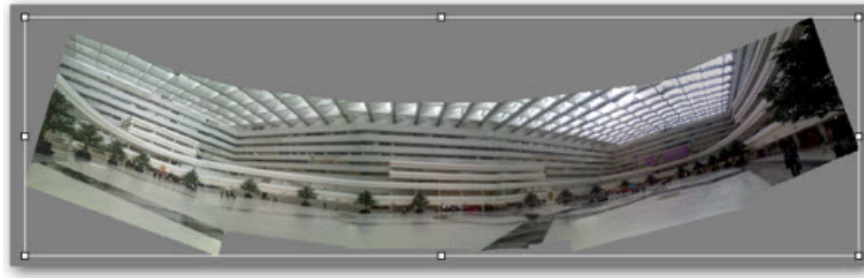
In a few seconds, you will get a panorama in the preview window preview:



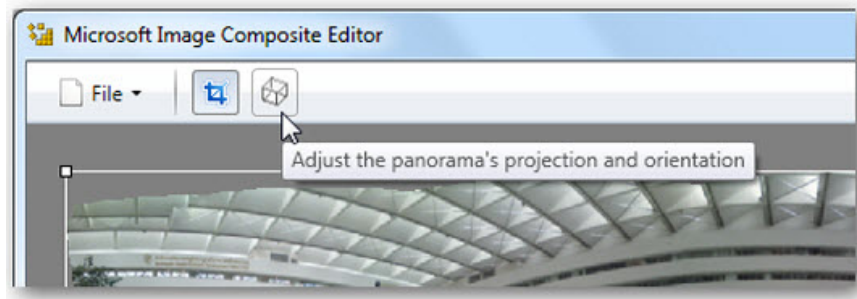
Looking down at the window is to select the views, change how the pictures are stitched together. Or you can choose to automatically change the frame size with the *Automatic Crop* tool:



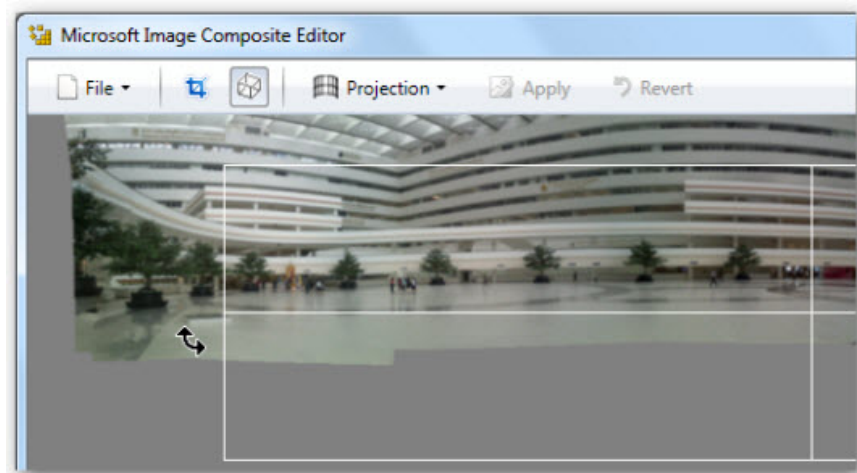
This is the sample after changing the *Camera Motion* view to **Camera Motion 2** :



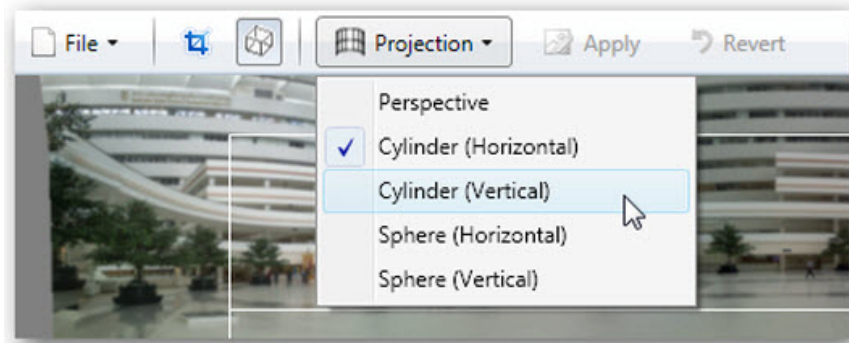
But, to bring the most realistic and vivid look possible to the photo, you should use the **Adjust the panorama's projection and orientation function** :



On the panorama will appear grids - grids, where you can rotate, move the corners in different directions:



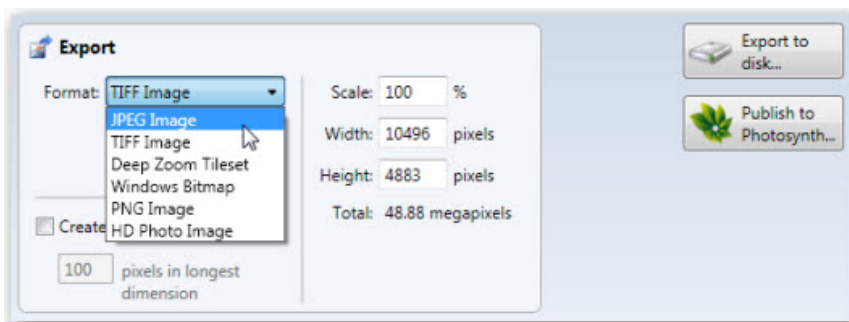
Or from the **Projection** button above, you can choose different project modes:



Here we select Cylinder mode (Vertical), which will completely remove the borders around the image. You can select each surrounding area, or individual parts from the center of the image. After feeling satisfied with your choice, click **Apply** to save or select **Revert** to return to the previous process:



After completing your own "masterpiece", you can export the panorama file into different formats from the Export menu below, select the scale or to set the original maximum size of the photo. Click **Export to disk** to save the image on your computer, or **Publish to Photosynth** to upload your panorama online. On the other hand, you can save the entire process of creating, editing panorama images in .spj format, this file contains all the settings in *Image Composite Editor* , so you can edit later if you want:



Conclude

With a lot of different tests, whether the inside angle of the building or the tall trees, with the Microsoft Image Composite Editor's multi-function tool set will easily bring about the effect you want for your panorama picture. . The program is simple, easy to use, many utilities, good compatibility with Windows XP, Vista and 7 operating systems, both 32 and 64 bit platforms.

Good luck!

You finished reading the article "**Create advanced Panorama images with Microsoft Image Composite Editor**" edited by the [TipsMake](#) team. We hope this article has provided you with many useful tech tips and

tricks. You can search for similar articles on tips and guides. Thank you for reading and for following us regularly.
