

## Create a Windows recovery CD

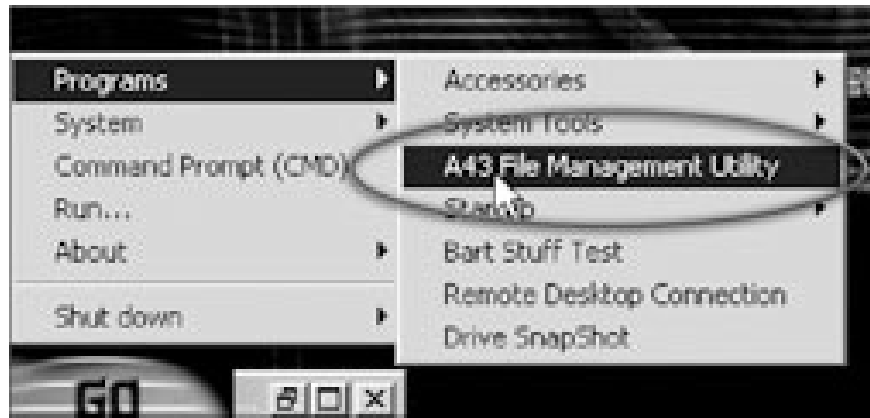
Normally, Microsoft requires that every factory with Windows pre-installed must provide a few ways to restore this operating system, but many CDs that support this function can only take your hard drive.



**My new laptop comes with a data recovery disc, but this is not a CD that only contains the Windows operating system. So what should I do?**

Normally, Microsoft requires that every factory with Windows pre-installed must provide a few ways to restore this operating system, but many CDs that support this function can only take your hard disk back. re-initialize the manufacturer's status, ie wipe all data and applications you have installed.

Thankfully, many new computer brands have removed this type of system recovery disk cleanup. New computers of ABS, Dell, Gateway, Lenovo and WinBook all come with CDs containing Windows XP or another way to reinstall the operating system without losing user data.



**Figure 1:** Boot from the BartPE environment to reinstall Windows without using a Windows CD disc.

If your computer does not have the Windows CD included, it will most likely have a folder called "i386" that contains Windows installation files. This folder is usually located in the root directory of drive C: or in folder C:\Windows. The system may have multiple i386 directories but the directory you need to contain many files with extensions ending in \_, next to files like Expand.exe, regedit.exe and winnt32.exe. Copy this folder to a CD for backup, while still using the content on the hard disk to reinstall Windows.

Be prepared with a 25-character Windows Product Key because you'll need them to reinstall the operating system. These numbers may be on the back of the desktop, below the laptop, or at some hidden corner. In addition, they can also be included in the accompanying documentation when you purchase the device.

Besides, you also need a bootable CD to proceed with this installation. The free PE Builder utility (or <http://www.9down.com/story.php?sid=6179>) by Bart Lagerweij will help you create a bootable CD called Barts Preinstall Environment (BartPE) from a Windows CD or i386 folder.

At PE Builder main interface, select the folder or drive containing the i386 folder, not the i386 folder itself. Then, mark the Create ISO image and Burn to CD options, as well as select the CD-RW drive from the Device drop-down menu. If the PE Builder does not support your recorder, double-click the newly created PE Builder .iso file to proceed to burn this file to a CD using the existing burning program on your computer.

To reinstall Windows, boot from the BartPE CD you just created and select Go>Programs>A43 File Management Utility (Figure 1). Go to the i386 folder of the hard drive (not the i386 folder on the CD) and then double-click the winnt 32.exe file to proceed with the installation. When the installation program finishes, restart your computer and remove the CD from the device, then select Microsoft Windows XP Setup from the boot menu.

**Xuan Cuong**  
**PC World USA 11/2005**

You finished reading the article "**Create a Windows recovery CD**" edited by the [TipsMake](#) team. We hope this article has provided you with many useful tech tips and tricks. You can search for similar articles on tips and guides. Thank you for reading and for following us regularly.