

# Corel Draw: Use the photo corner effect in Corel Draw

However, you should note that Corel only creates drawing objects as vector images, so if you want to use the effects of bitmap images you must convert them to bitmap with the **Bitmaps** command> **Convert to bitmap**. Please try, the photo corner effect with Corel Draw.

**About photo editing, Corel Draw is not in Photoshop. But Corel can also create a lot of effects when editing bitmap images similar to Photoshop and still equally effective!**

However, you should note that Corel only creates drawing objects as vector images, so if you want to use the effects of bitmap images you must convert them to bitmap with the **Bitmaps** command> **Convert to bitmap** . Please try, the photo corner effect with Corel Draw.

At Corel's working interface, click the **Import** button or go to **File > Import** , select an image of any format (available on your computer) and then click the **Import** button. To fit the image into the Corel screen in a balanced manner with the original image as well as being aligned in the Corel screen, press the **Enter** button.

Click to select the image, go to **Bitmaps > 3D Effects > Page Curl** .

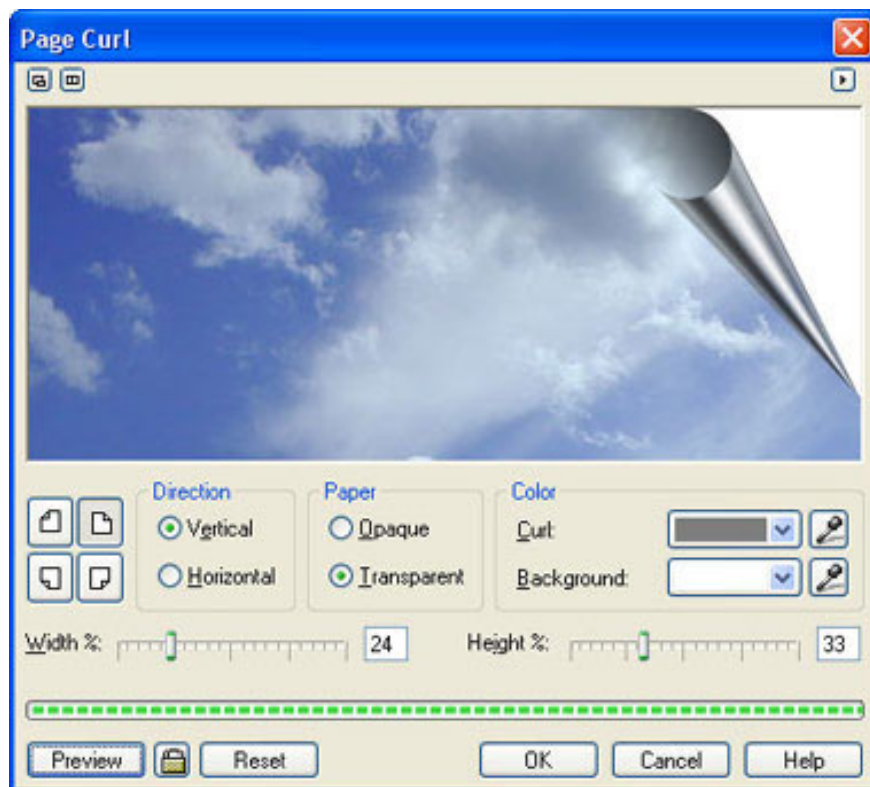


Figure 1

The Page Curl dialog box opens, indicating that you will choose to bend the image at any corner through the 4 left middle icons. **Direction** area allows you to choose the direction of bending angle in the direction of straight up ( *Vertical* ) or horizontal ( *Horizontal* ). In the **Paper** area, you can give your flip angle opaque ( *Opaque* ) or ( *Transparent* ). The **Color** area shows you the color of the flip angle ( *Curl* ) and the color of the background ( *Background* ) by selecting the color in the 2 color cells. The two Width% and Height% sliders below allow you to set parameters to 'flip' the corners of the image. If you extend the angle of the corner of the image, it is the percentage value of the width. Height is the value from the top of the flip angle when it has not turned to the corner of the flip. Also, if you want to find the same color as one of the main colors, use the **Eyedropper** tool located next to the 2 color boxes to select (see Figure 1).



Figure 2

When done, click *Preview* to preview. As long as you are satisfied, click *OK* to execute. Figure 2 is the result.

### **Phan Lê**

You finished reading the article "**Corel Draw: Use the photo corner effect in Corel Draw**" edited by the [TipsMake](#) team. We hope this article has provided you with many useful tech tips and tricks. You can search for similar articles on tips and guides. Thank you for reading and for following us regularly.