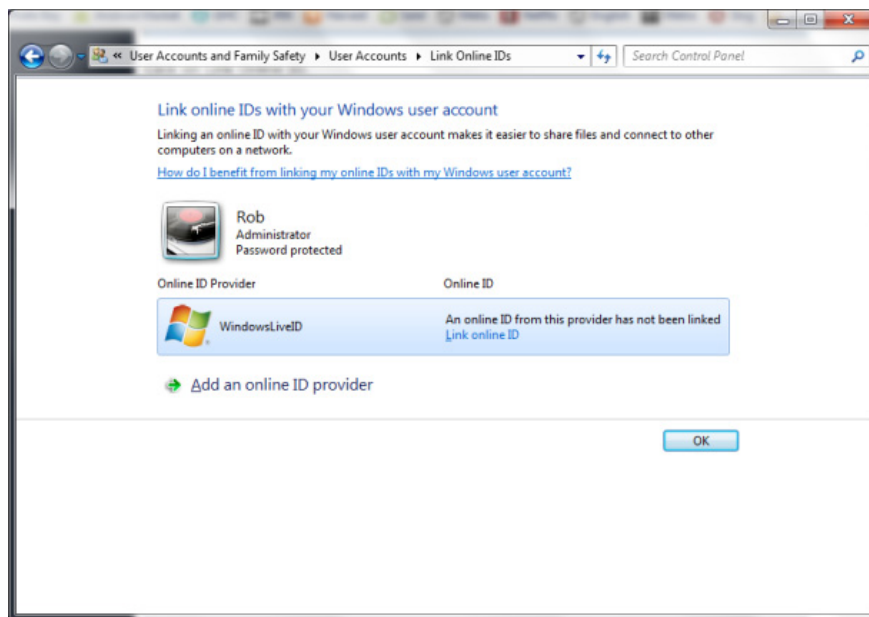


Connect SkyDrive storage folder in Windows 7

If you have a Windows Live account (which is the old Hotmail), it will mean 25GB of free storage of SkyDrive online service. In the following article, we will show you a few basic steps to directly mount SkyDrive's storage folder in Windows 7 ...

TipsMake.com - If you have a Windows Live (the old Hotmail account) account, it will mean 25GB of free storage of SkyDrive online service. In the following article, we will show you a few basic steps to directly mount **SkyDrive** 's storage folder in **Windows 7**.

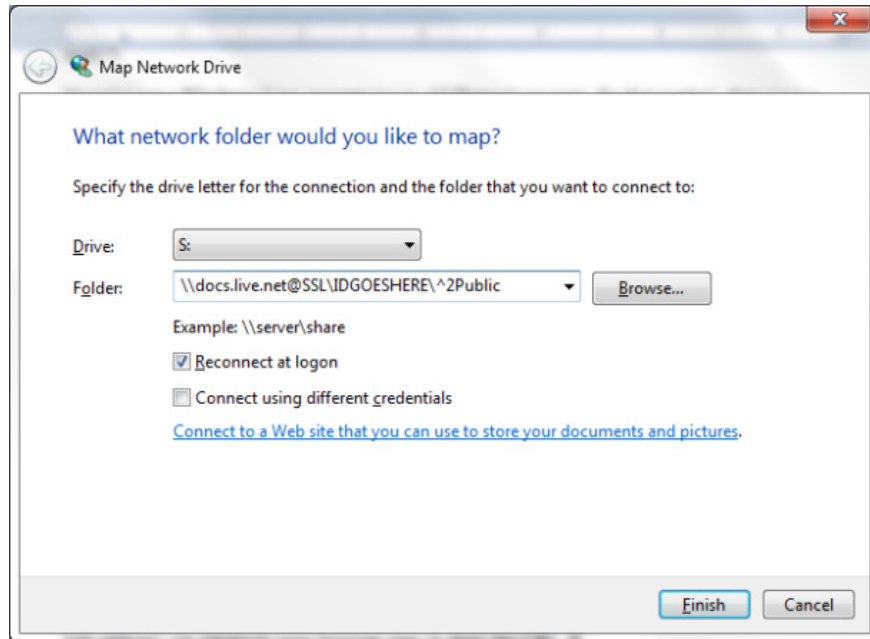
First, open **Control Panel> User Accounts and Family Safety> User Accounts> Link Online IDs** and select **Link Online ID** right next to **WindowsLiveID** (in some cases you need to download and install **Windows Live ID** first, but The same way is done):



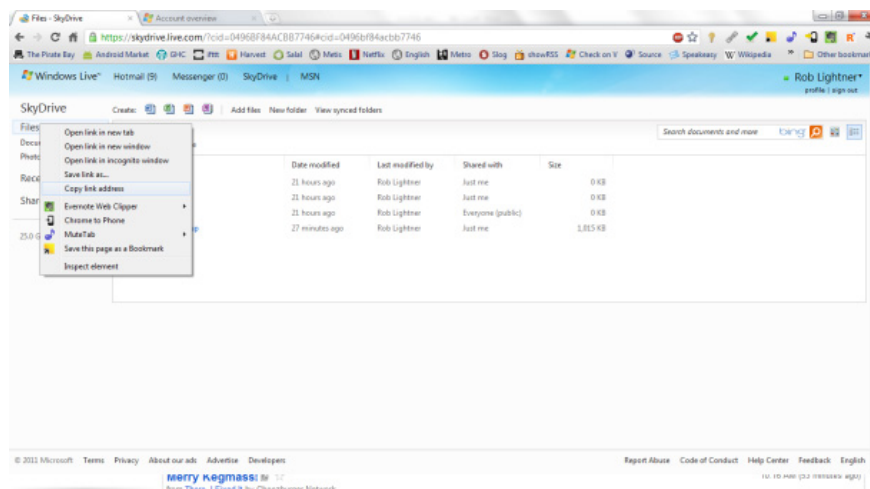
Connect the computer to the Windows Live ID

Next, we log into the **Windows Live** account (if you want to change your password, you need to go back to the **Link Online ID** page in **Control Panel**). After that, you have to create or set up **SkyDrive** storage folder on your computer, but this is also a confusing point for many people. To do this, open **My Computer> Map network drive** and select the character for this storage partition (in this example, **S**), then enter the code below into the text field next to **Folder** :

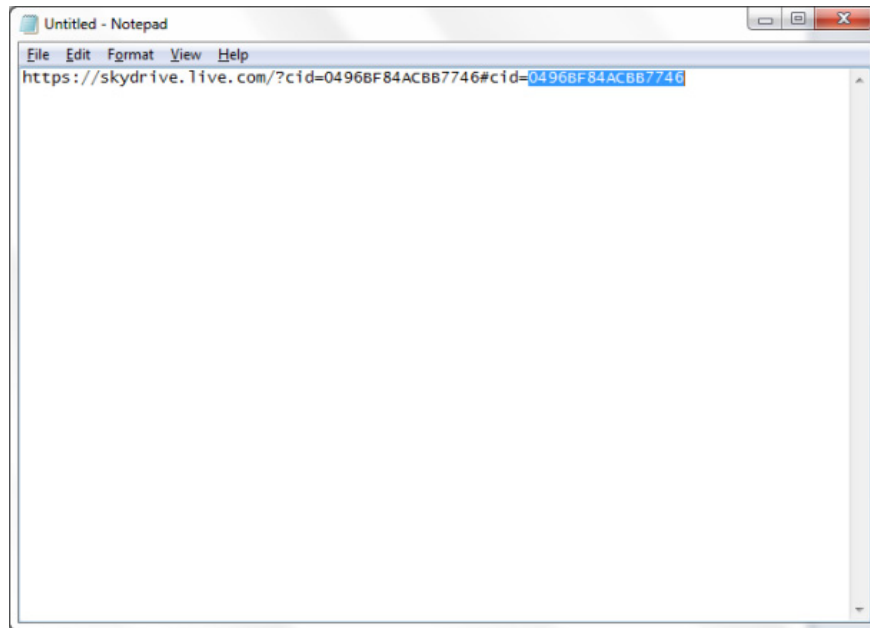
docs.live.net@SSLIDGOESHERE^2Public



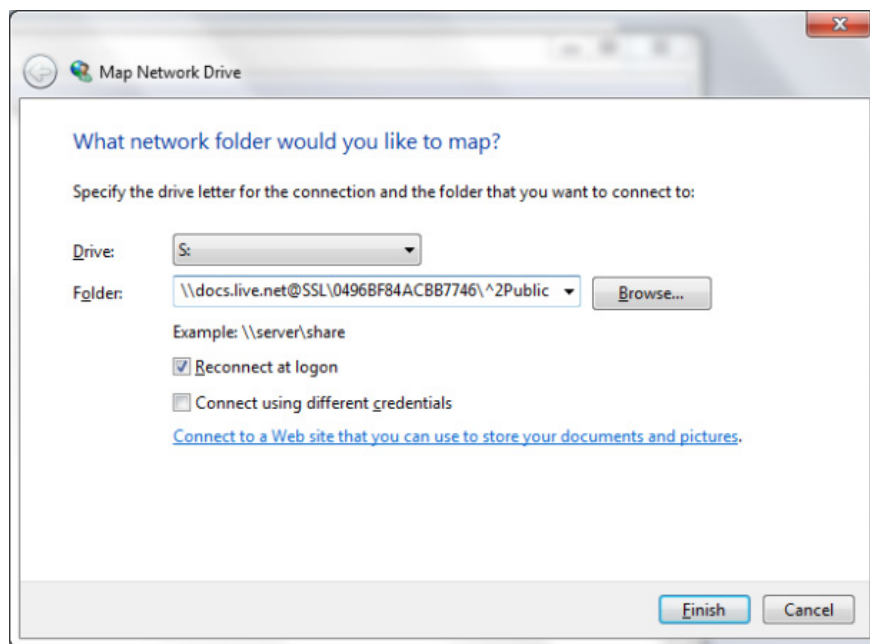
To search the **ID** of the account, visit the **SkyDrive** account management page, right-click on **Files**> **Copy link address**:



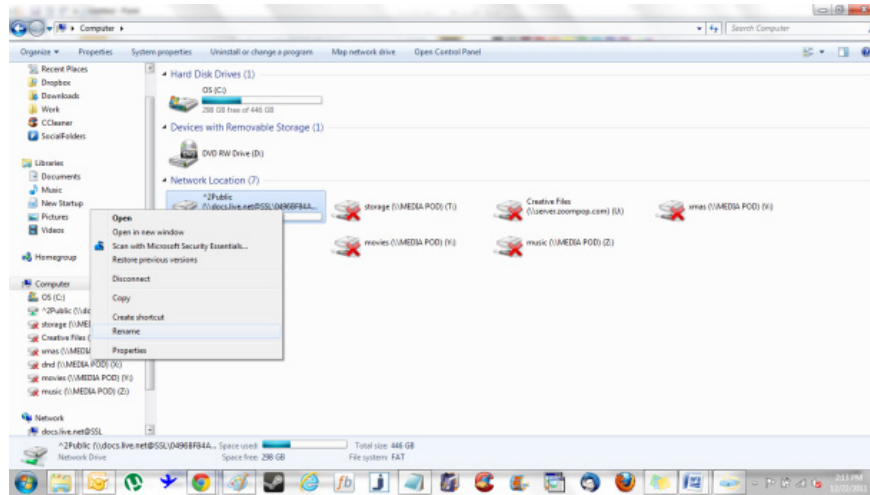
Save this **URL** into **NotePad** , then copy the text behind the **cid** =



Go back to the **Map Network Drive** folder and overwrite the above ID segment into the previous parameter (here is **IDGOESHERE**), then click **Finish** :



Then, log in with your **Windows Live ID**, your new storage partition will show up in **My Computer** as shown below:



Very simple and easy, wish you success!

You finished reading the article "**Connect SkyDrive storage folder in Windows 7**" edited by the [TipsMake](#) team. We hope this article has provided you with many useful tech tips and tricks. You can search for similar articles on tips and guides. Thank you for reading and for following us regularly.