

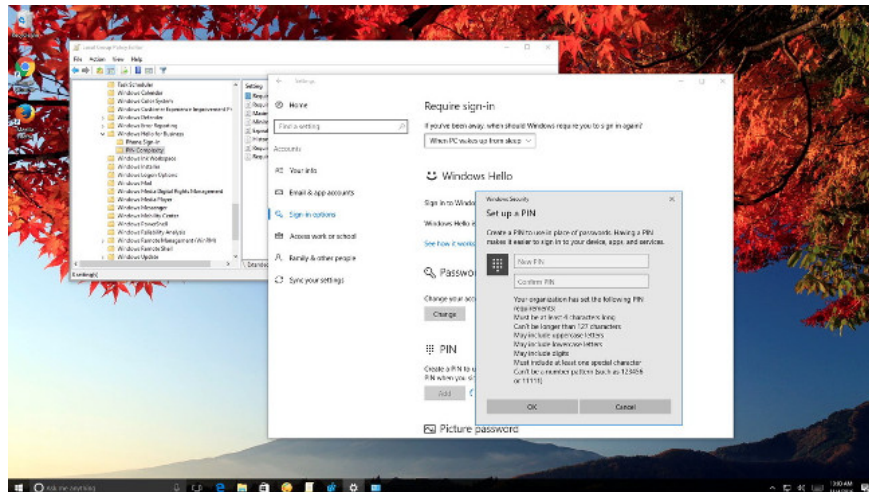
# Configure the 'brain damage' PIN to log on to Windows 10

On Windows 10 is integrated a lot of login options, users can choose, including PIN code. If you're using a mobile device, you're probably familiar with PIN codes, an authentication solution similar to passwords, but there are some more unique features.

On Windows 10 is integrated a lot of login options, users can choose, including PIN code. If you're using a mobile device, you're probably familiar with PIN codes, an authentication solution similar to passwords, but there are some more unique features.

Usually, the PIN only includes numbers and is usually very short, but in return this form of password is not synchronized through all devices that share the same Microsoft account that run separately, each device can set one Different PIN codes, though sharing an account, have enabled all sync.

However, **Windows 10 has a built-in feature** that allows you to create a more complex PIN, using special characters, letters, capital letters and lowercase letters to better secure your system.



## 1. Configure a more complex PIN

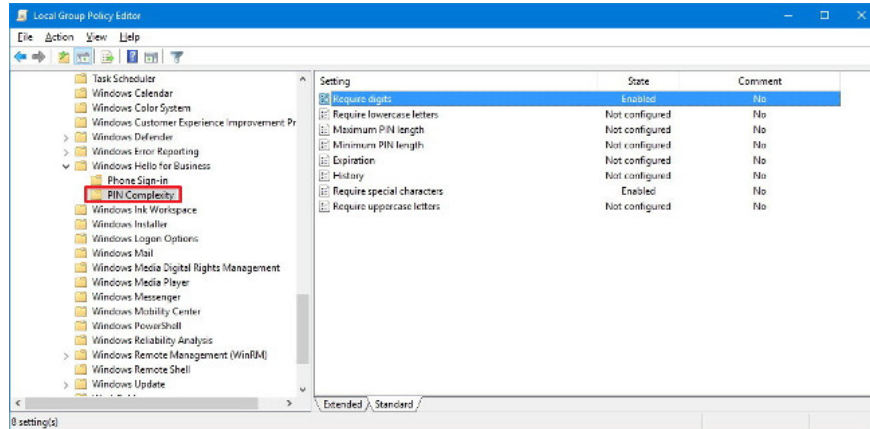
On a Windows 10 Pro computer you can use the Local Group Policy Editor to quickly configure a more complex PIN, follow the steps below:

1. Press the **Windows + R** key combination to open the Run command window.

2. Enter **gpedit.msc** there and press Enter or click **OK** to open the **Local Group Policy Editor** window.

3. In the Local Group Policy Editor window, navigate to the key:

**Computer Configuration => Administrative Templates => Windows Components => Windows Hello for Business => PIN Complexity**



4. In the left pane, double-click the **policy** setting that you want to configure, including:

- **Require digits** : If enabled or not configure this policy, the operating system will require at least one numeric character to generate a PIN. If you disable this policy, you do not need to use the numeric character in the PIN code.

- **Require lowercase letters** : If enabled (enabled) or does not configure (not configured) this PIN will be required to have at least 1 lower case and if disabled (disabled), it will not be able to use print characters usually in PIN.

- **Maximum PIN length** : This policy allows you to set the maximum length of PIN with a maximum of 127 characters. PIN length must be greater than or equal to 4, and of course must be higher than the minimum length.

- **Minimum PIN length** : This policy allows you to set the minimum length of PIN with the minimum length of PIN from 4 to 127 but must be less than the maximum length.

- **Expiration** : Set the validity period of the PIN, which can range from 1 to 730 days. If it is reset to 0, the PIN will never expire.

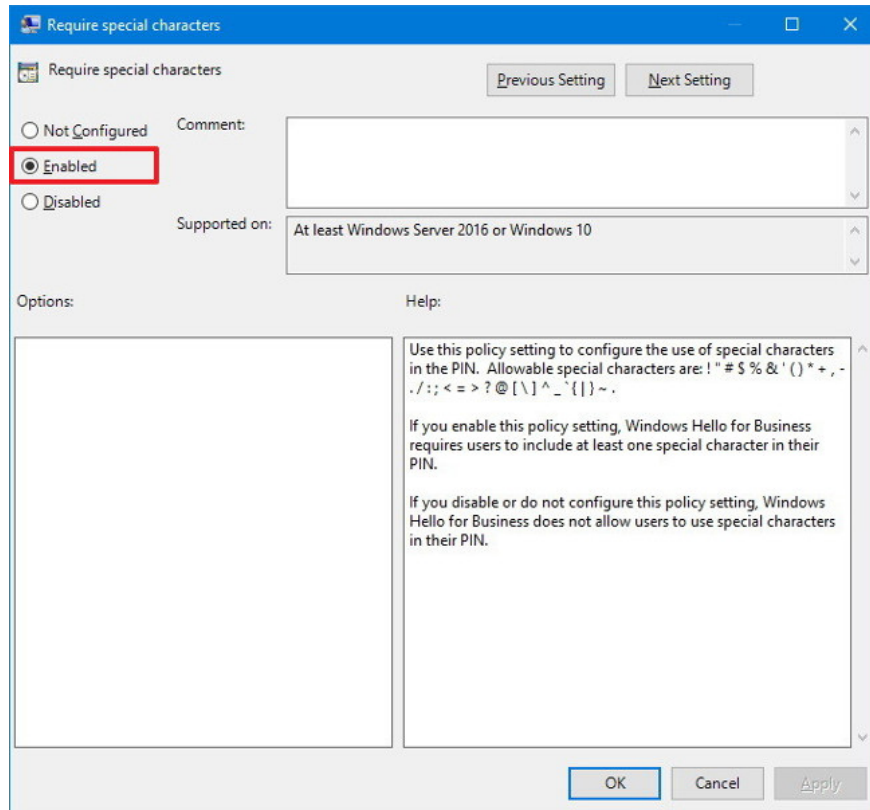
- **History** : Do not allow the use of PIN code previously installed. It is possible to set from 0 to 50, and if there is a value of 0, it will not be valid.

- **Require special characters** : PIN request must have at least one special character in PIN when enabled (enable). If you disable (disable) or do not configure (not configure) you will not be able to create a PIN containing special characters, including:

! " # \$ % & ' ( ) \* + , - . / : ; = > ? @ [ \ ] ^ \_ ` { | } ~ .

- **Require uppercase letters** : If enabled (enable) or not (not configure) this policy, the PIN will have at least 1 uppercase character, while disabled (disabled) will not contain characters Print the PIN.

5. In the top left corner, make sure to select **Enabled** or **Disabled** to configure the policy.



6. Change policy options.

7. Click **Apply** .

8. Click **OK** to complete the process.

## 2. How to create a complex PIN code to login to Windows 10

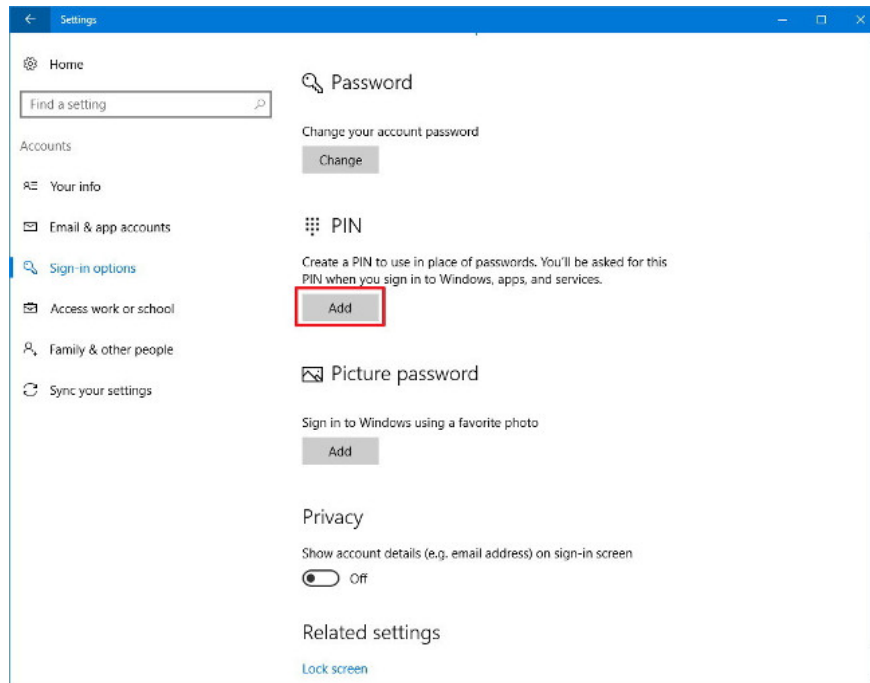
After having configured the PIN as above, the next step you can easily change the PIN accordingly.

1. Open **Settings** .

2. On the Settings window, find and click on **Accounts** .

3. Click **Sign-in options** .

4. Under the PIN section, click the **Add** button.



5. Enter your current password to confirm and click **Sign in** .

6. At this time, the Set up a PIN dialog box appears, where you click the link **PIN requirements** to see the required PIN settings.

7. Create a new PIN.



8. Click **OK** to complete the process.

Finally, test by locking your device (press the Lock key (if available) or the Windows key + L shortcut key combination and try logging in with the newly created PIN.

### **Refer to some of the following articles:**

1. Forgot password protected Excel file, what should you do?
1. No need to install any software, this is how to protect your folders safely
1. Your computer requires entering a password after starting from Sleep mode, this is a fix

### **Good luck!**

You finished reading the article "**Configure the 'brain damage' PIN to log on to Windows 10**" edited by the [TipsMake](#) team. We hope this article has provided you with many useful tech tips and tricks. You can search for similar articles on tips and guides. Thank you for reading and for following us regularly.