

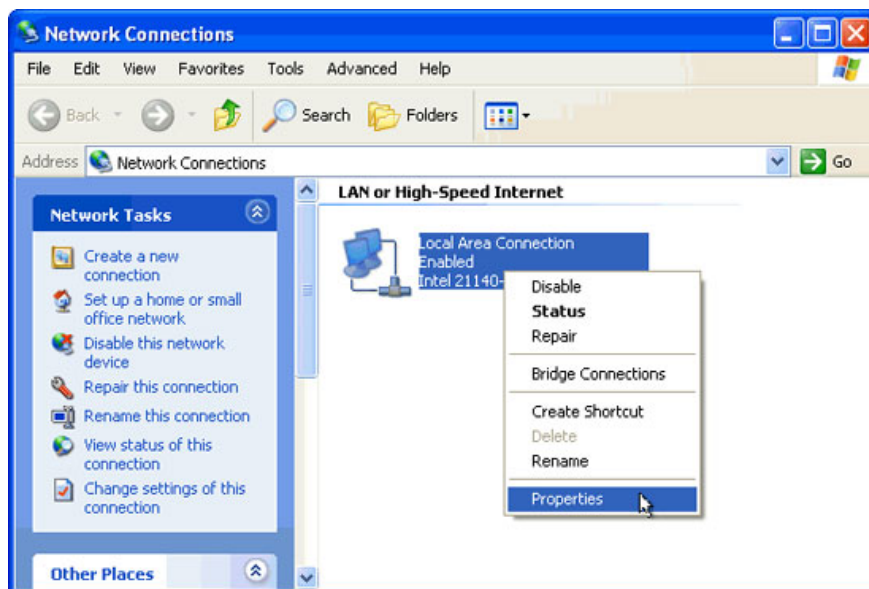
Configure TCP / IP to use DHCP and static IP address at the same time

To configure your computer to use both DHCP to allocate IP addresses and static IP addresses, follow these steps

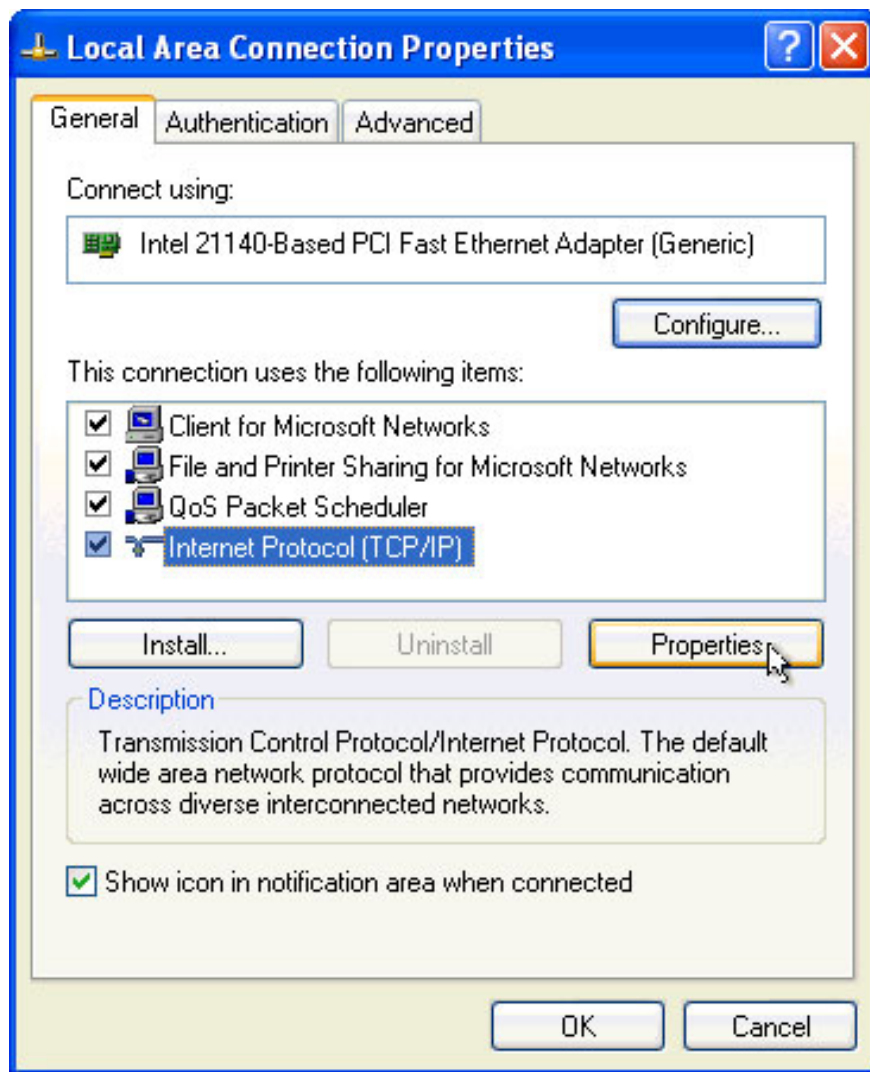
To configure your computer (checked on Windows 2000, Windows XP, and Windows Server 2003) using both DHCP to allocate IP addresses and static IP addresses, follow these steps:

Configure your computer to use DHCP

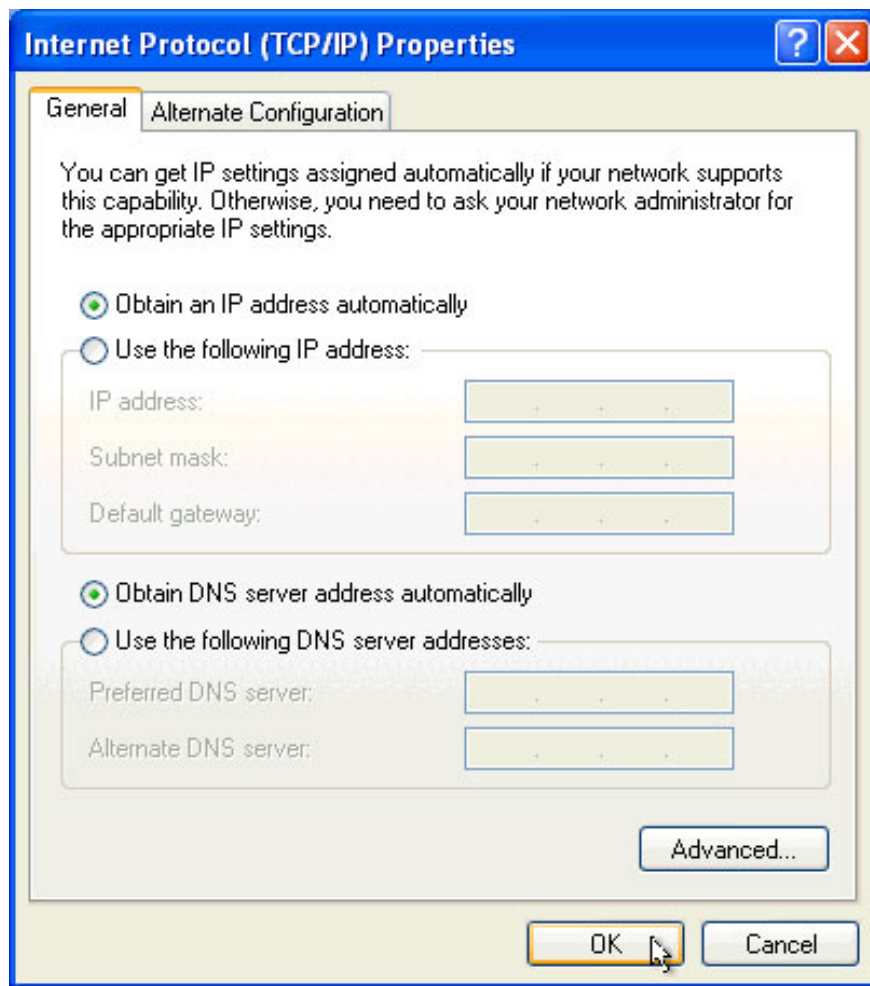
1. Right-click **My Network Places** and select **Properties**
2. On the NIC is usually labeled **Local Area Connection** - right-click on it and select **Properties** .



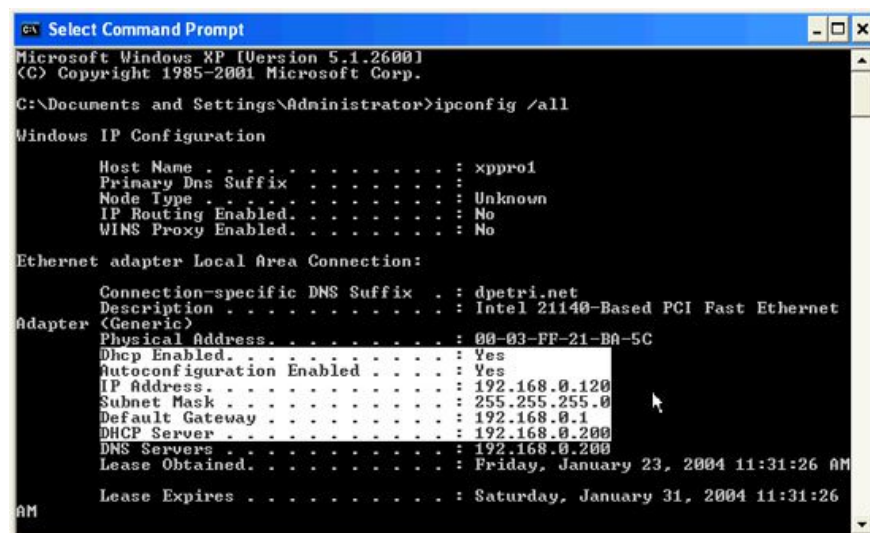
3. Select **TCP / IP** (Make sure you do not uncheck the box here) and click the **Properties** button.



4. Make sure the " **Obtain Automatically** " option is selected



5. You can check your settings by running: **ipconfig / all** at cmd:



6. The job is complete.

Add a second static IP address (or third and more)

1. Click **Start** and select **Run** . fill in: **Regedit** and press Enter.

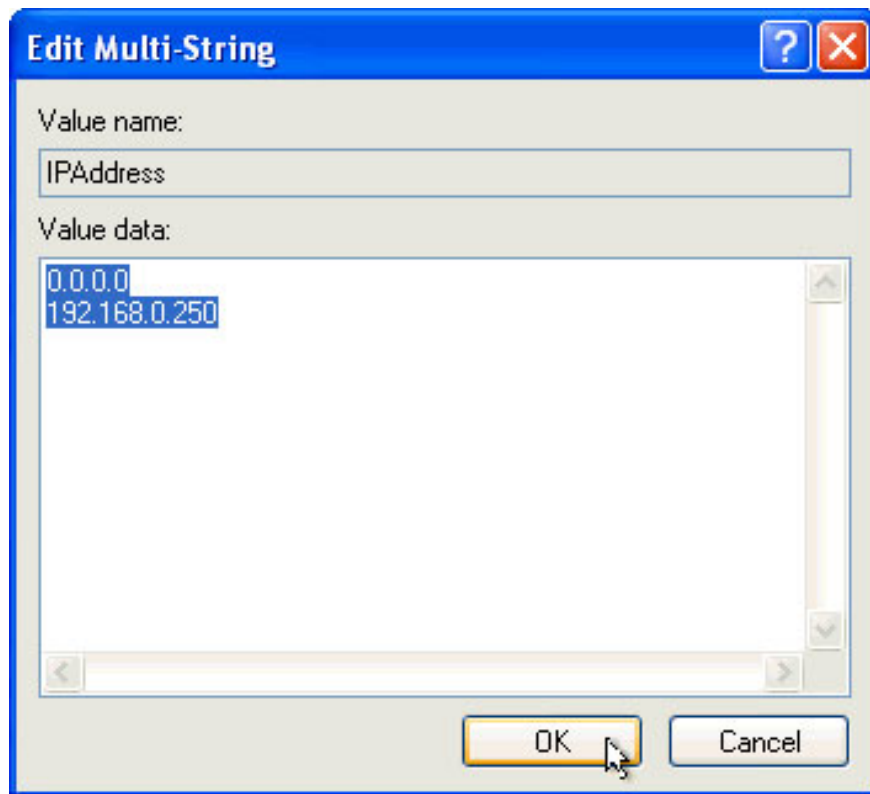
Note : On Windows 2000 and NT you need to run **regedt32** instead of **regedit** .

2. Go to the following key:

HKEY_LOCAL_MACHINE\SYSTEM\CurrentControlSet\Services\Tcpip\Parameters\Interfaces\{B003AD4A-B6DB-44FD-9741-CBA3C51B6498}

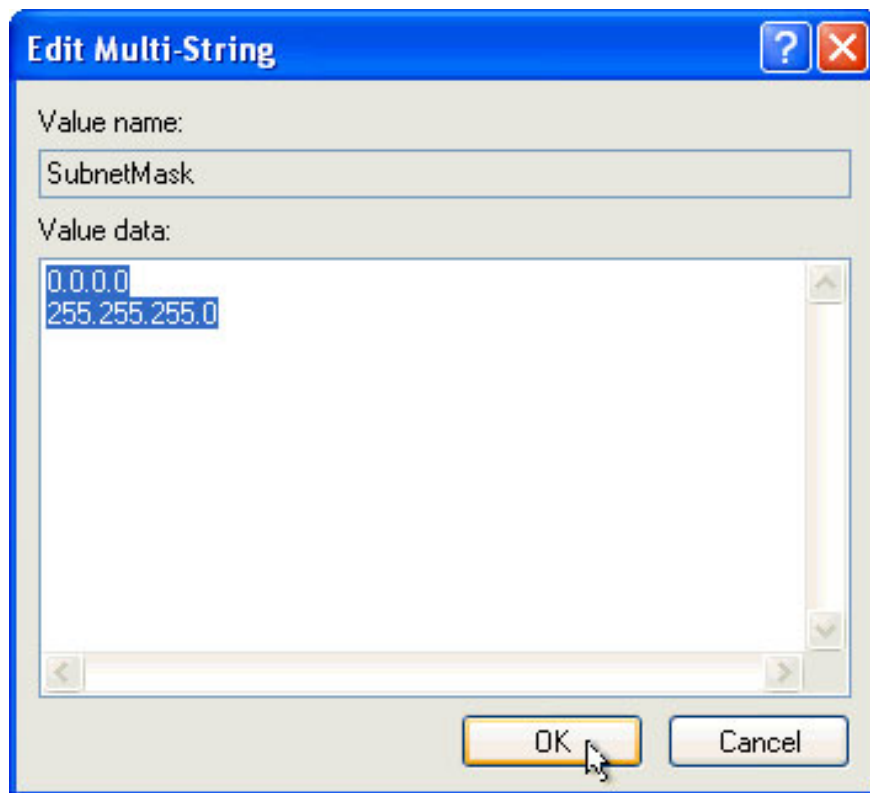
3. Select the **IPAddress** key and double-click it.

4. In the **Edit Multi String** dialog box enter a second IP address (third and so on). Make sure that each IP address you enter is separated on a separate line. Click **OK** .



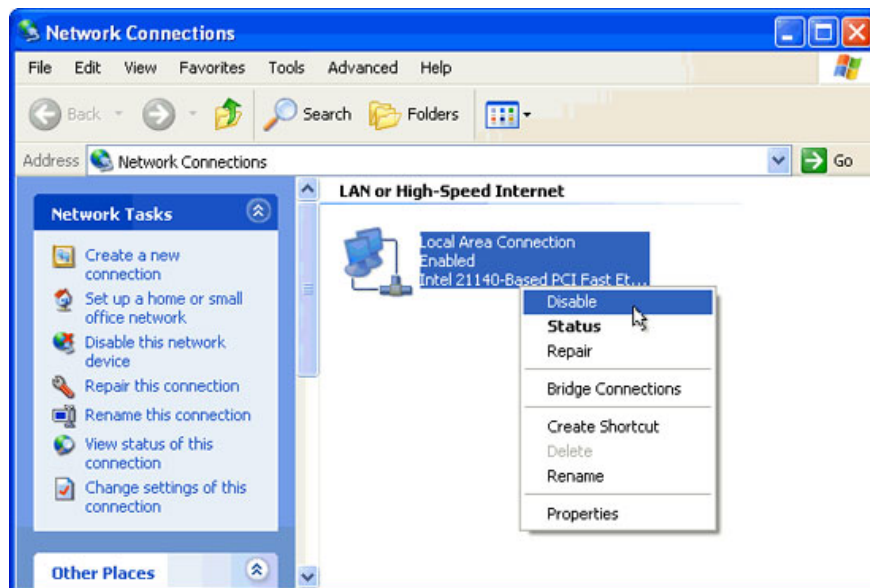
5. Select the **SubnetMask** key and double-click it.

6. In the **Edit Multi String** dialog box enter a second Subnet Mask (third and so on). Make sure that each Subnet Mask you fill in is on a separate line. Click **OK** .

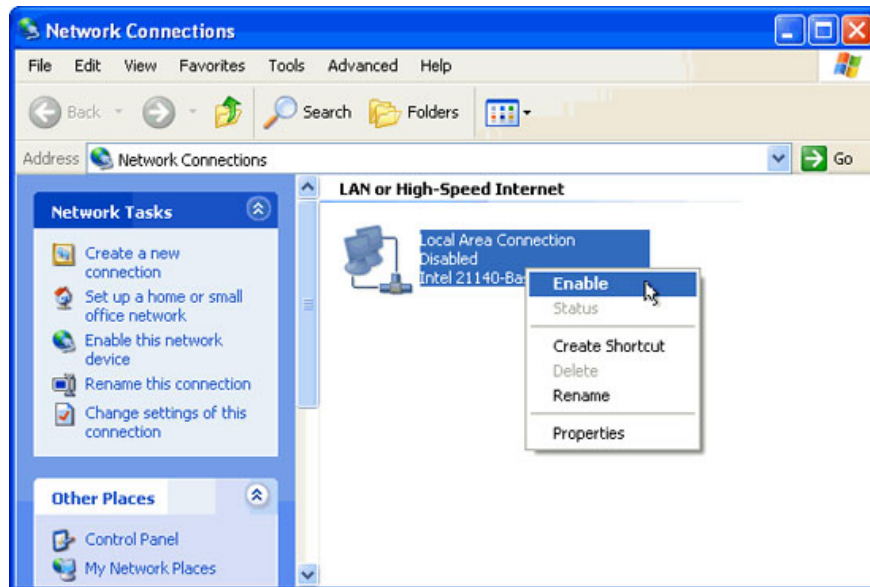


7. Close this registry editor.

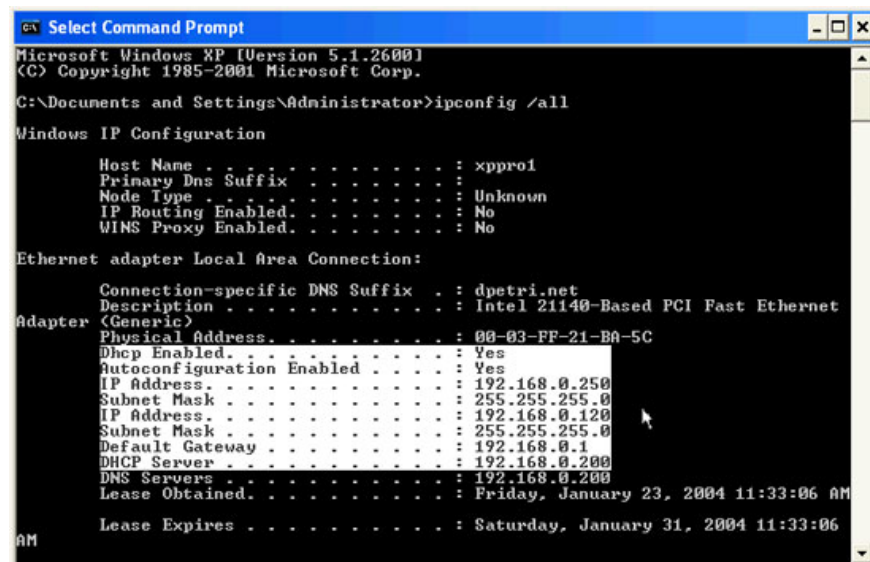
8. Back to **Local Area Connection** , right-click on the NIC and select **Disable** .



9. Right-click on the NIC and select **Enable**



10. Check your settings by running **ipconfig / all** at cmd:



You finished reading the article "**Configure TCP / IP to use DHCP and static IP address at the same time**" edited by the [TipsMake](#) team. We hope this article has provided you with many useful tech tips and tricks. You can search for similar articles on tips and guides. Thank you for reading and for following us regularly.