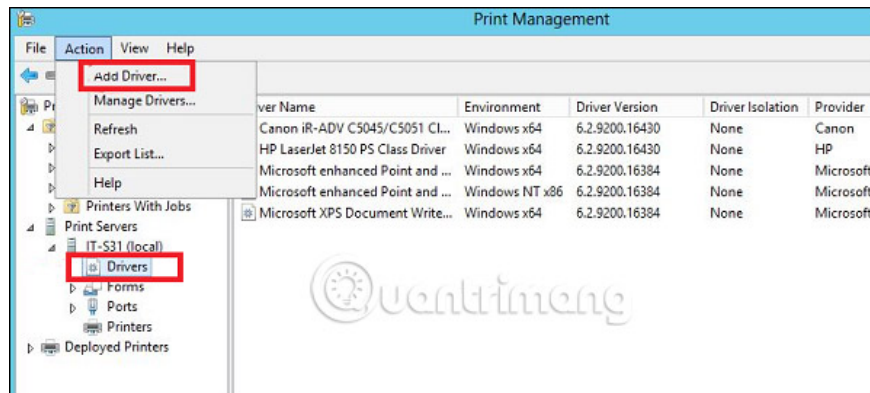


Configure Print Driver in Windows Server 2012

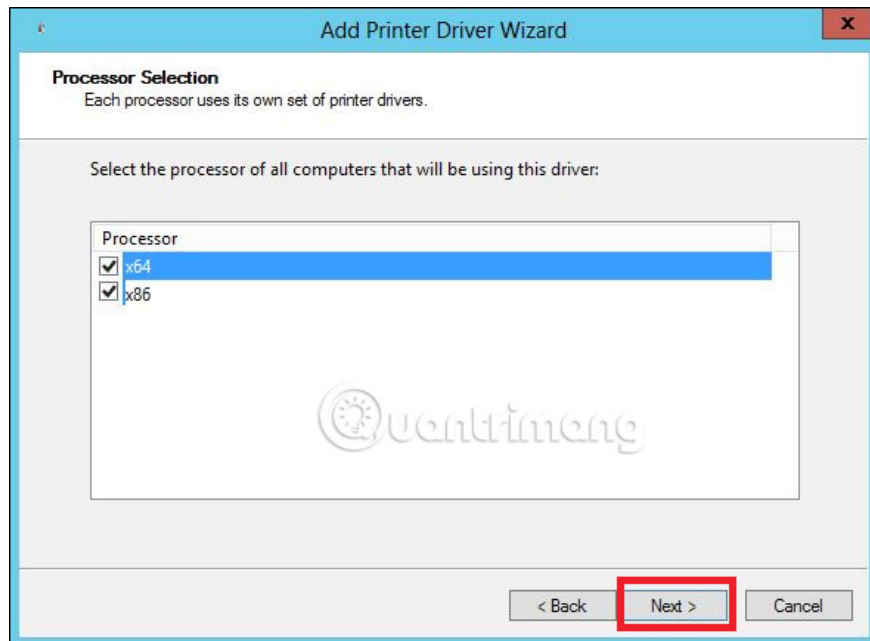
If you want to add additional drivers to help your clients easily install the printer. Please follow the steps below to configure the Print Driver in Windows Server 2012.

If you want to add additional drivers to help your clients easily install the printer. Please follow the steps below to configure the Print Driver in Windows Server 2012:

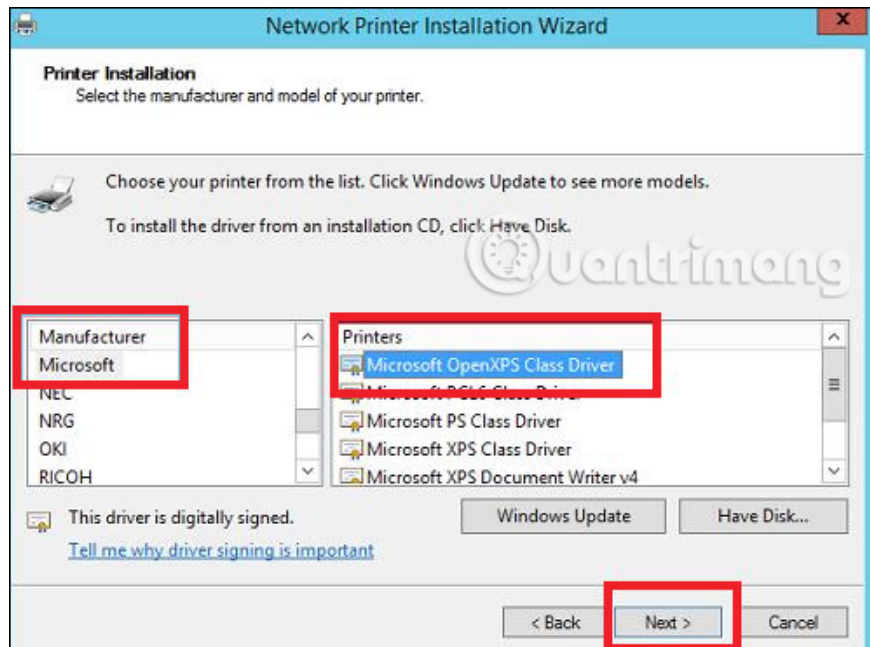
Step 1 - Access Server Manager > Tools > Print Manager > Action > Add Driver .



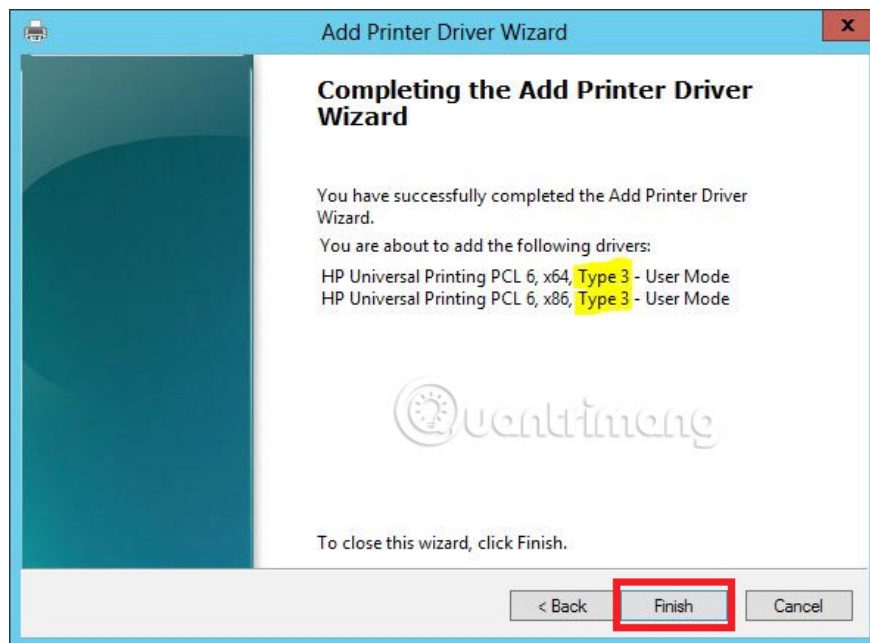
Step 2 - Select both boxes, then click Next.



Step 3 - Select the drivers to be installed and then click **Next**.



Step 4 - Click the **Finish** button .



See more:

1. How to install WSUS in Windows Server 2012
2. How to create a virtual machine in Windows Server 2012
3. How to install Hyper-V in Windows Server 2012

You finished reading the article "**Configure Print Driver in Windows Server 2012**" edited by the [TipsMake](#) team. We hope this article has provided you with many useful tech tips and tricks. You can search for similar articles on tips and guides. Thank you for reading and for following us regularly.

