

Configure multiple Domains on an Exchange 2000 server.

You are the network administrator, if one day you are required to configure the Exchange 2000 Server system to use more than one domain, the work requirements require the administrator to have a good understanding of exchange, But the problem is not more than ph

You are the network administrator, if one day you are required to configure the Exchange 2000 Server system to use more than one domain, the work requirements require the administrator to have a good understanding of exchange, But the problem is not too complicated. The following model will give you an overview and how to achieve this task.



Situation given

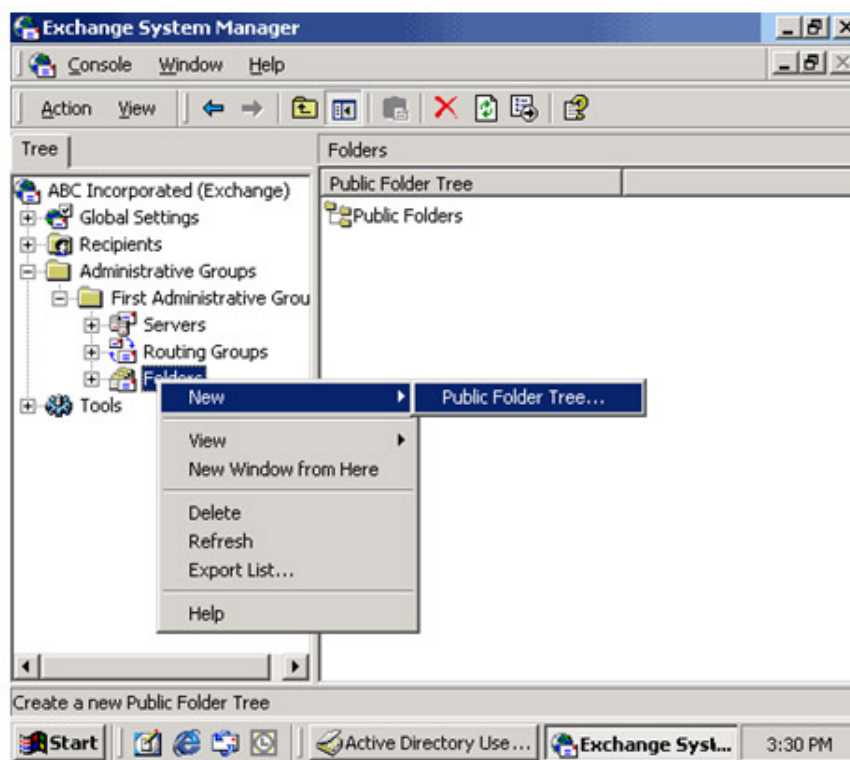
Assume that you are the network administrator of ABC Company, and that your company has just purchased

XYZ company equally well in ABC's current business. The Board of Directors of your company is required to maintain the email activity of the two systems on an Exchange 2000 server to reduce the administrative work. You plan to configure the *abcinc.net* domain and the *xyzinc.net* domain on the same Exchange server as ABC-server.

The board of directors also requires you to maintain these two systems separately, meaning that the *abcinc.net* Outlook user only sees the ABC staff in the Global contact list and vice versa the *xyzinc.net* Outlook users only see xyz employees in the Global contact list, companies should also maintain a separate Public folder.

Create a new Public Folder folder

The first step you have to do is to create the *XYZ Public Folder Tree folder* . To create this folder, open *Administrative Groups* with *Exchange System Manager - Select Folder* , right-click and select *New - Puclic Folder Tree* (Figure A). Name it *XYZ Public Folder Tree* .



Picture A

Step on to create separate Public Folder for 2 companies. In this case *Messaging Application Programming Interface clients* (MAPI clietns), for example, Outlook can view the information in the default public folder directory.

Create a Storage group

Creating a new storage group for XYZ company is expected to achieve many reasons. The main reason is that you can manage policies for email and mailboxes separately. To create *Storage group* for XYZ, select ABC-

Server - under *Administrative Group* - right click - select *New - Storage Group* (Figure B)

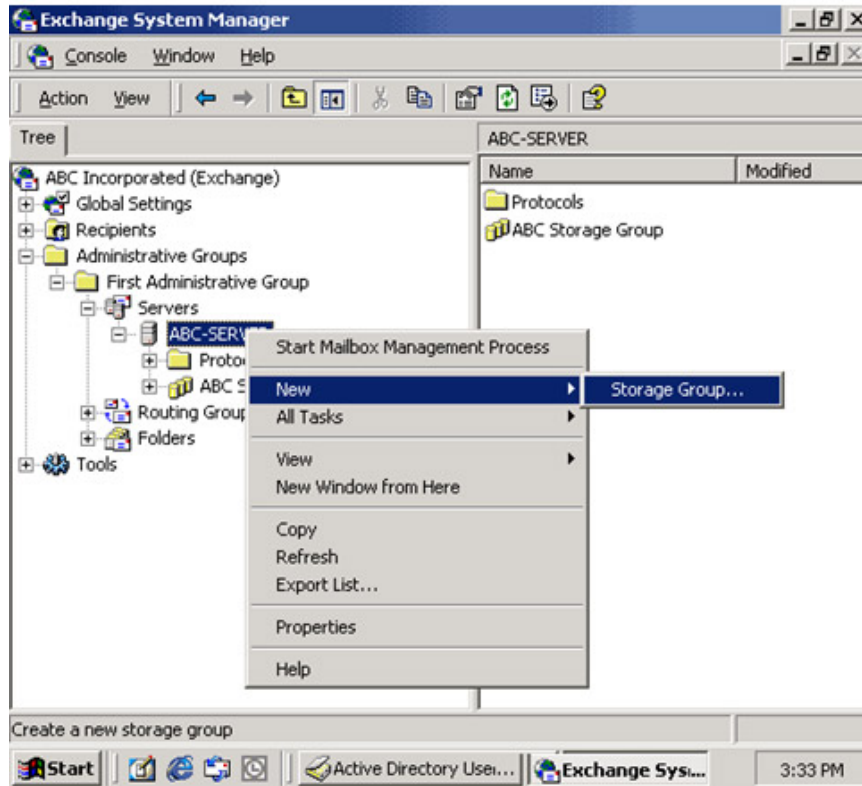


Figure B

Name *XYZ Storage Group* . This group consists of at least one Public store to store the public folder and a mailbox store to store mailboxes. Create a Mailbox store named *XYZ Mailbox store* by right-clicking *XYZ Storage Group* , selecting *New - Mailbox store* , and then creating a Public folder store that links it to *XYZ public store tree* .

Picture Recipient policies.

ABC-Server always has a default recipient policy to create an email address for users with domain name SMTP *abcinc.net* . Now you have to create a new recipient policy to take care of creating an email address for the new SMTP domain name *xyzinc.net* for mailbox XYZ storage group.

Navigate to *Recipient Policies* in the main *Recipients* section, right-click *Recipient policies* - select *New - Recipient Policy* . Select *Email - Address* and name *XYZ Email Address Policy* , then change the item in the *Filter* section to display the mailbox storage group is *XYZ Storage Group* . In the *E-mail address* tab, change *SMTP address* to *@ xyzinc.net* . This is to ensure that each mailbox created within XYZ Storage Group has a domain name *@ xyzinc.net*

Configure Global Address list

As mentioned above, the Board of Directors requires employees to access their Global Address list only to find

the corresponding employee information of the company. To do this, create a new Global Address list for both ABC and XYZ companies. Just right-click on *All Global Address list* under *Recipients* , select *New - Global Address list* (Figure C). Name *ABC Address list* and *XYZ Address list* separately.

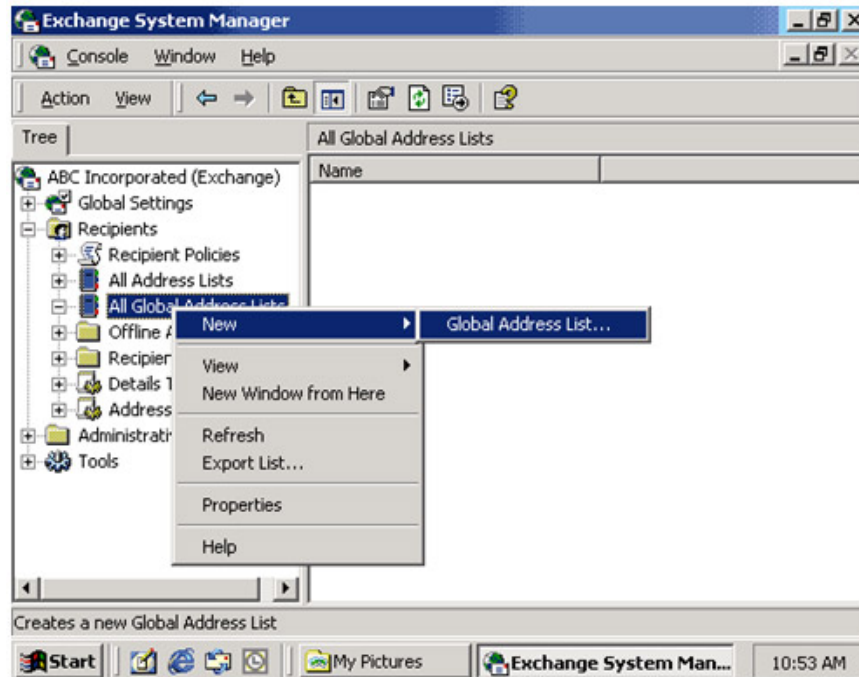


Figure C

Create *Filter rules* for each Global address list with a storage group, and you can delete the default Global Address list. Now, when a user selects the *Global address address* within Outlook, they will see the shared user in the same storage group.

Configure SMTP Virtual server and connector

As a network administrator, you want to take over the email management of domain *abcinc.net* and *xyzinc.net* *in the* same way. You will not need to configure anything else in the *SMTP Virtual server section* or the *SMTP connector* if it is already configured. When the *MX record* is set up correctly for each domain, the policy of receiving mail for that domain along with the structure of the existing email address in the Exchange domain, the email will be delivered. However, if you want to set up two separate policies for each domain based on the SMTP domain to take care of sending / receiving separate mail, you must make additional configuration for both *SMTP virtual server* and *SMTP connector* .

Create Mailbox

You can now be ready to create a new user or mailbox in the XYZ company. You can use *Active Directory Users and Computer* to create users and mailboxes for them. Make sure you create a new mailbox for them located in *XYZ Storage Group* (Figure D). After creating, you must give 1 or 2 minutes for the system to run the *Recipient Update Service* to create a new email.

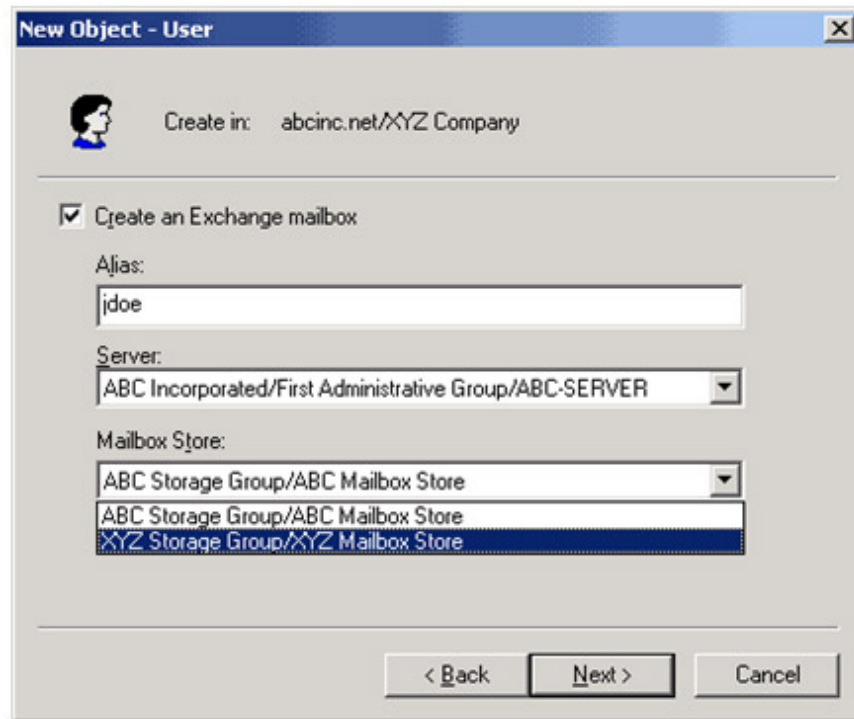


Figure D

Back to the email address you just created, you will see that the user has a mail address, *user@xyzinc.net SMTP email address* (Figure E). Before that, when creating user and mailbox for ABC company, *SMTP address* will be displayed as *user@abcinc.net* . These users are now ready to send / receive email for the domain corresponding to it.

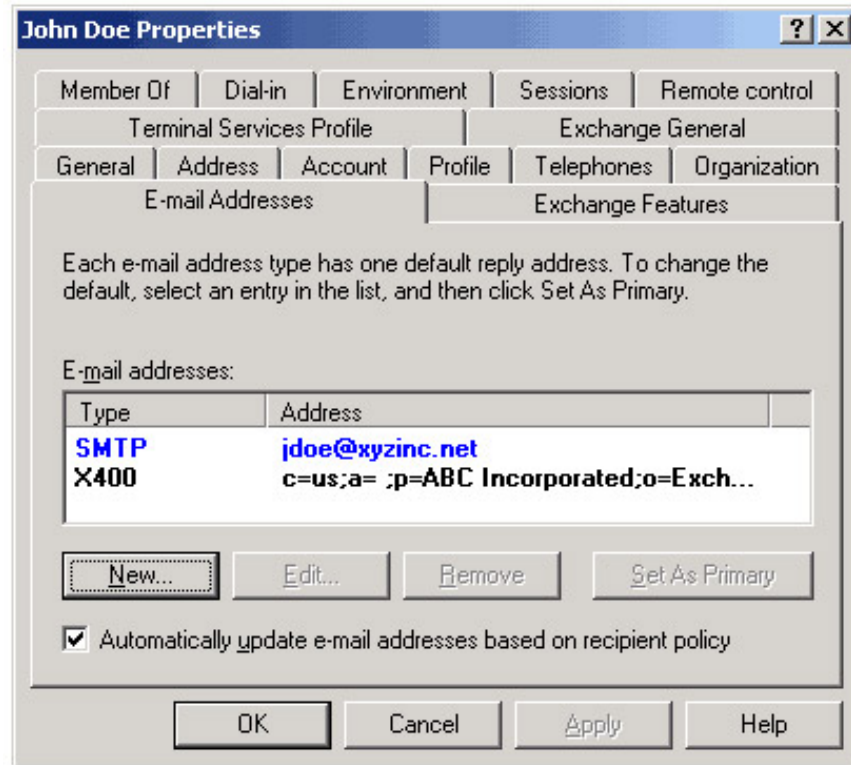


Figure E

Configure Outlook

Open Outlook, the user only sees in the *Global address list* only displays the addresses in that range of Storage Group. Back to public folder, the Board of Directors wants to manage separate access, but due to *client MAPI* restrictions such as Outlook, the default public folder is still displayed. To solve this problem, create 2 more public folder folders, name *ABC company* and *XYZ company*. Grant access to these directories to allow access to the respective users of each company.

Note : *The above method only applies to Exchange Enterprise version*

Ho Tuan Manh

Email: *tuan_manh2001*

You finished reading the article "**Configure multiple Domains on an Exchange 2000 server.**" edited by the [TipsMake](#) team. We hope this article has provided you with many useful tech tips and tricks. You can search for similar articles on tips and guides. Thank you for reading and for following us regularly.