

Configure Forefront TMG as the DirectAccess server

In this tutorial we will show you how to configure Forefront TMG as a DirectAccess server.

In this tutorial we will show you how to configure Forefront TMG as a DirectAccess server .

Note that this tutorial will only cover the steps needed to configure Forefront TMG as a DirectAccess Server. Configuring the DirectAccess server is completely outside the scope of the article.

One important issue you need to know is that Forefront TMG does not accept IPv6 traffic or allows it to go through, so we must first change this behavior before Forefront TMG is installed to allow saving. the following amount:

- Authenticated IPv6 traffic (using IPSec), including IPSec initialization traffic.
- Techniques for sending and sending IPv6 traffic (6to4, Teredo, IP-HTTPS and ISATAP)
- Original IPv6 from Forefront TMG machine.

In addition, Forefront TMG integrates with Windows DirectAccess's IPSec Denial of Service Protection (DoSP) component to ensure that only IPSec traffic is allowed.

Attention:

We need to install and configure Windows Server 2008 R2 DirectAccess before installing Forefront TMG.

First, install the Windows Server 2008 R2 DirectAccess management console as shown in the figure below.

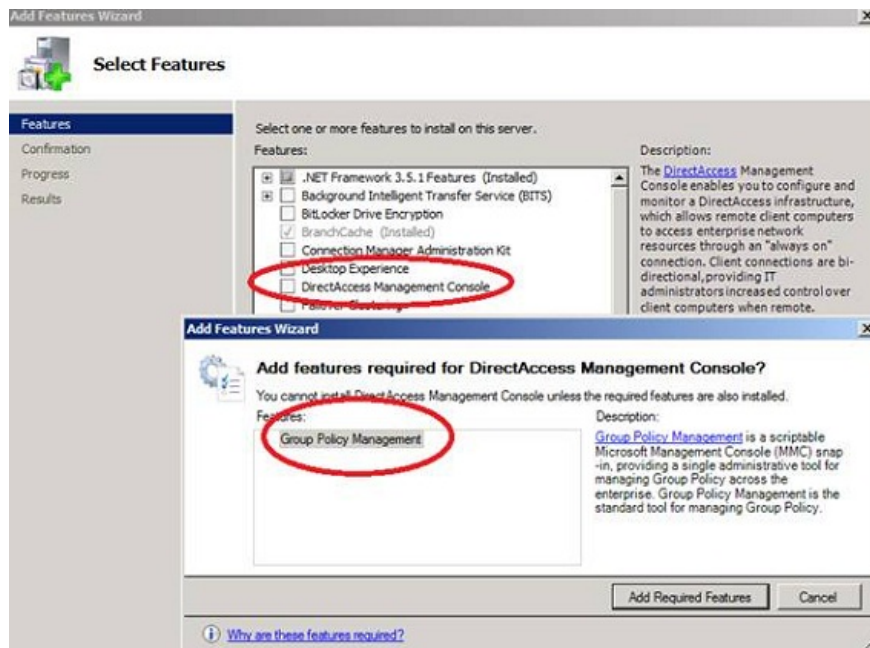


Figure 1: Installing the Windows Server 2008 R2 DirectAccess feature

After the management console has been installed, launch the DirectAccess management and configuration interface, then test all the functions before installing Forefront TMG.

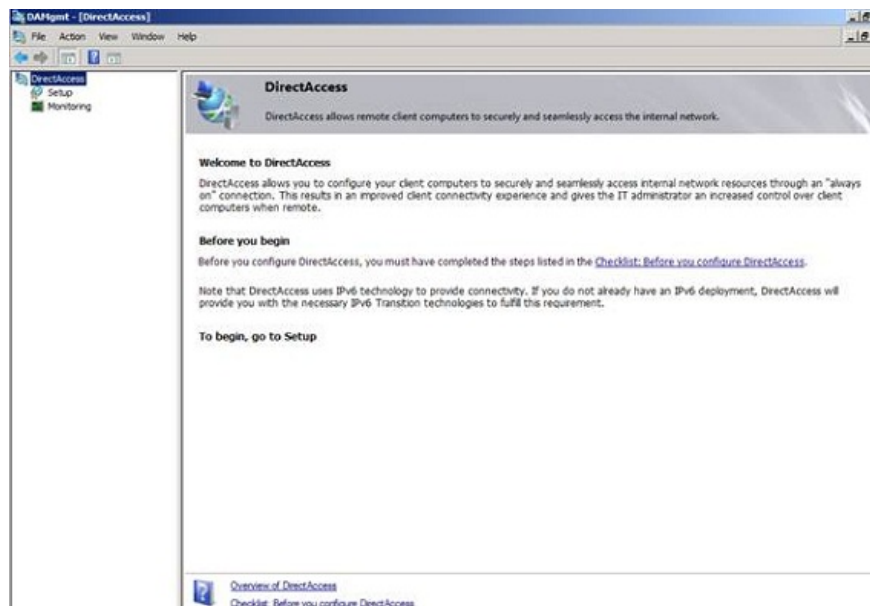


Figure 2: DirectAccess management interface

After verifying the successful DirectAccess installation and configuration, we must change the Registry with a new key before installing Forefront TMG. This key is to prevent Forefront TMG from disabling IPv6 protocol support during the Forefront TMG installation.

[HKEY_LOCAL_MACHINE\SOFTWARE\Microsoft\RAT\Stingray\Debug\ISACTRL]
"CTRL_SKIP_DISABLE_IPV6_PROTOCOLS" = dword: 00000001

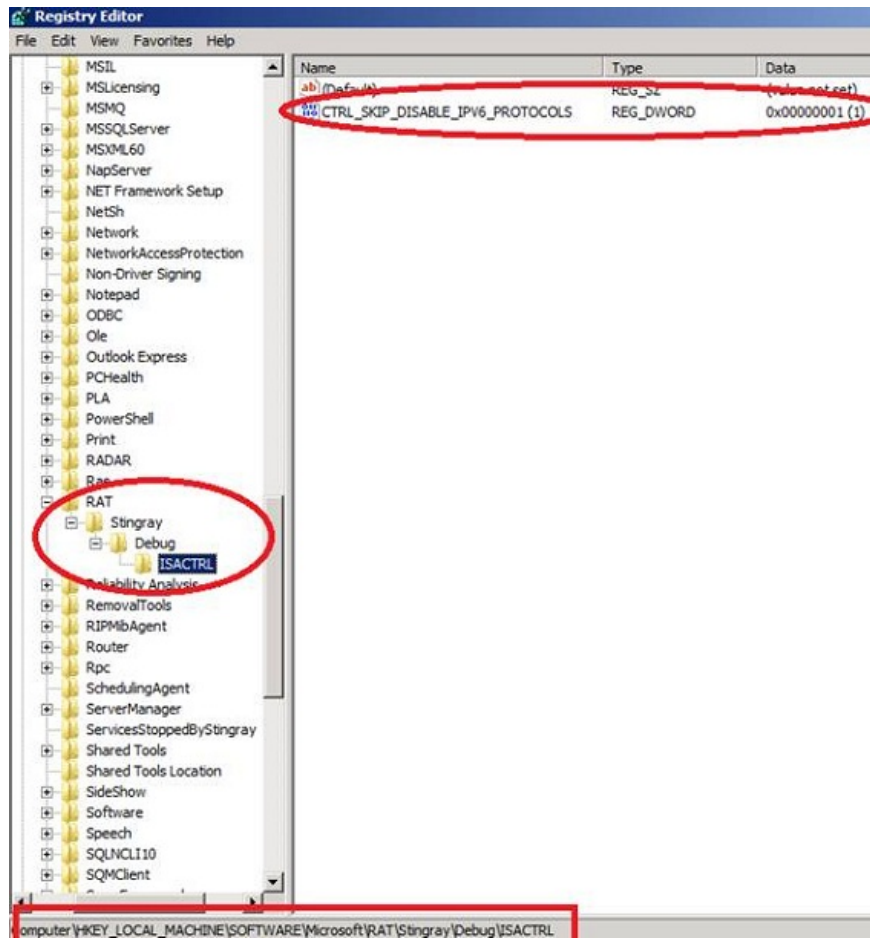


Figure 3: The script enabled the IPv6 protocol support for Forefront TMG

After the Registry has been successfully changed, install Forefront TMG the way you installed the regular Forefront TMG server. When installing Forefront TMG, we must change the Forefront TMG configuration with a script that allows IPv6 support. Copy the following code into a blank Notepad file and save it with the .VBS extension.

```
set o = createobject ("fpc.root")  
set arr = o.Arrays.Item (1)  
set policy = arr.ArrayPolicy  
set IPV6Settings = policy.IPv6Settings  
IPV6Settings.DirectAccessEnabled = vbTrue  
arr.save
```

```

da-enable.vbs - Notepad
File Edit Format View Help

set o = createobject("fpc.root")
set arr = o.Arrays.Item(1)
set policy = arr.ArrayPolicy
set IPV6Settings = policy.IPv6Settings
IPV6Settings.DirectAccessEnabled = vbTrue
arr.save

```

Figure 4: Save the script under .VBS tail

Save the script with the .VBS extension and run it from the command line with the following command:

Cscript DA-Enable.VBS

Because the Forefront TMG configuration changes, you will have to wait a bit until the configuration is synchronized. You will see the configuration status in the Forefront TMG management console as shown in the figure below.



Figure 5: Wait for the synchronization process to complete

The script will create four new system policy rules for DirectAccess to support IPv6 traffic.

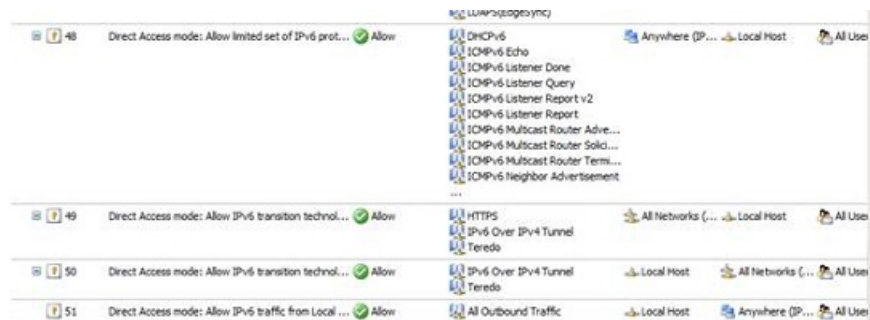


Figure 6: Some of Forefront TMG's new system policies

'Act as a Direct Access server' button

Forefront TMG Beta and RC have an **IPv6** tab in the **IP preferences** section of the management interface to configure Forefront TMG as the DirectAccess Server (see the picture below).

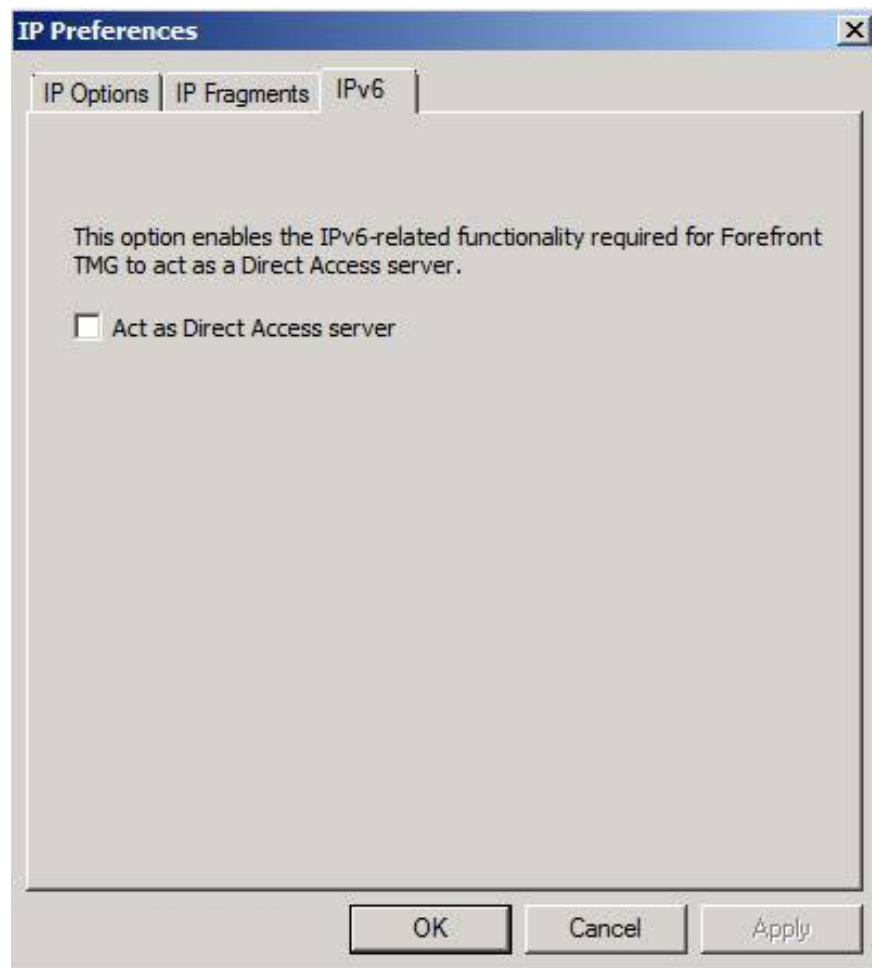


Figure 7: **Act as a Direct Access Server** button

However, after the RTM version is released, the IPv6 tab is removed from the Forefront TMG console.

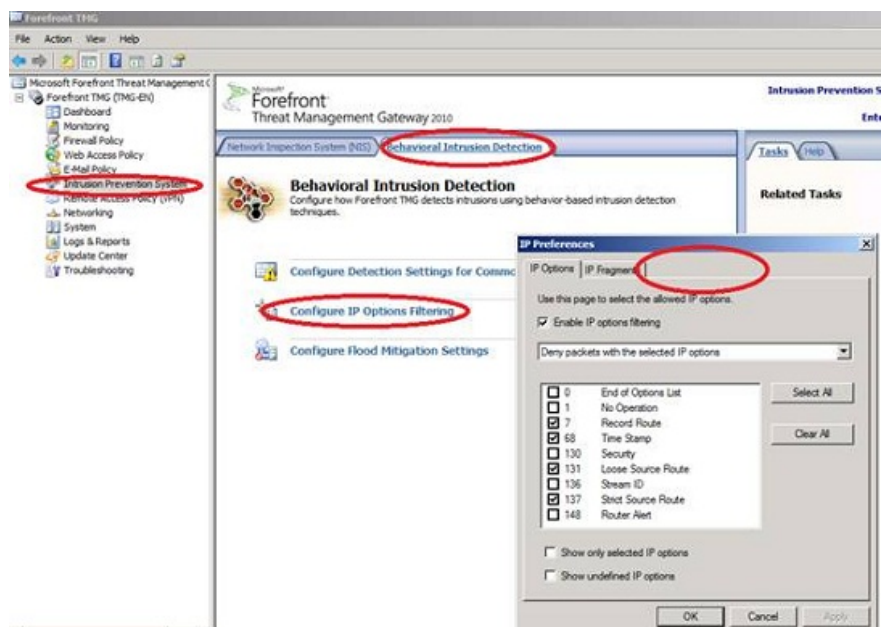


Figure 8: You will see the DirectAccess button in Forefront TMG Beta and RC versions

Hide IPv6 log entries

Forefront TMG has an option that allows you to hide IPv6 traffic from the **Real-time monitoring** tab. Since Forefront TMG does not support IPv6, this is an option to hide the entries for easier viewing within the TMG record.

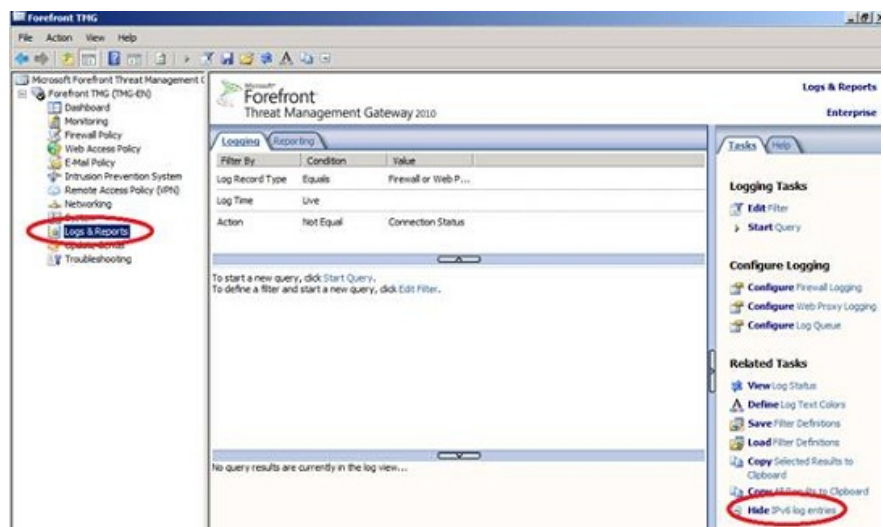


Figure 9: Hide IPv6 log entries

If you want more functionality and flexibility, you can use Forefront UAG for your DirectAccess scenario. Using Forefront UAG will have the following advantages:

- Easy to extend (allow 8 Forefront UAG Server to join an array)
- High availability (with Windows Server 2008 R2 NLB)

- Access to old servers in the company via IPv4
- Easy to configure, deploy and manage
- Forefront UAG installs Forefront TMG on each node during the installation process
- Other remote access solution for machines that are not joined to the domain.

You finished reading the article "**Configure Forefront TMG as the DirectAccess server**" edited by the [TipsMake](#) team. We hope this article has provided you with many useful tech tips and tricks. You can search for similar articles on tips and guides. Thank you for reading and for following us regularly.
