

# Complete usage of Simple VHD Manager

A VHD file simulates the file structure of the hard drive. You may think it is a ZIP file but not compressed. The VHD is used as a hard drive for the virtual machine, but the file can be mounted in the same way that the real hard drive is mounted.

A VHD file simulates the file structure of the hard drive. You may think it is a ZIP file but not compressed. The VHD is used as a hard drive for the virtual machine, but the file can be mounted in the same way that the real hard drive is mounted.

After being mounted, the VHD appears on Windows like a real hard drive. You can add, delete, and edit files on the VHD, or create a new Windows installer, bootable VHD. If you have to use 2 or more operating systems at the same time, usually the best option for you is to install the second operating system on VHD. However it may generate some errors:

1. Virtual hard drives can disappear after booting is complete (this is a common error).
2. You must add the entry to the Boot menu.
3. Process attached and separated.

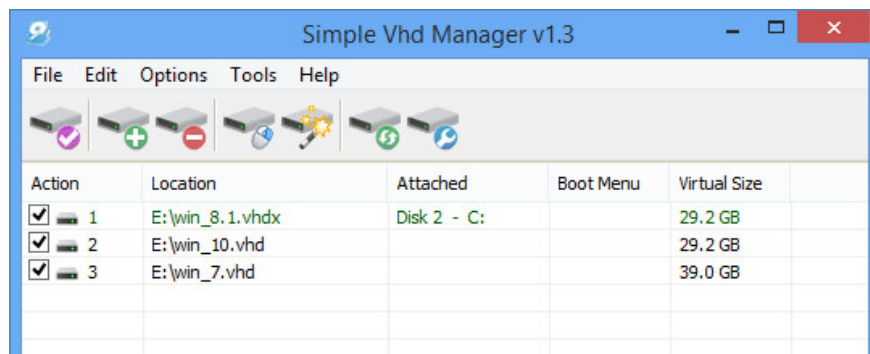
Simple VHD Manager is a software that supports VHD users to simplify some activities:

1. You can attach and split VHD / VHDX / ISO files by drag and drop.
2. You can permanently attach Virtual Hard Disk on Windows 10, Windows 8.1, Windows 8, and Windows 7.
3. You can easily add and / or remove VHD / VHDX / ISO files to the boot menu.

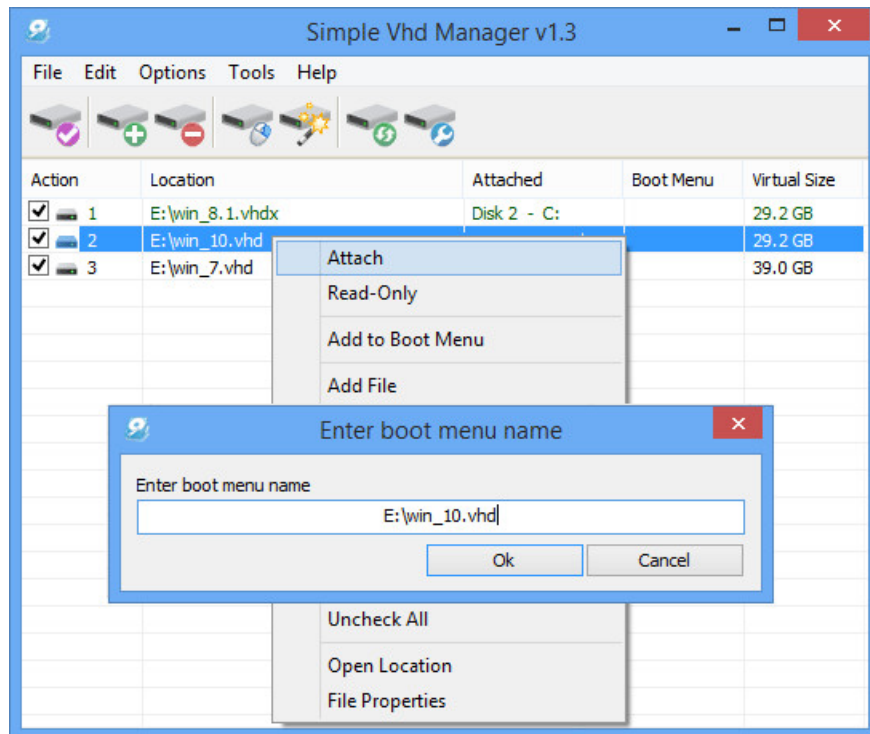
Download Simple VHD Manager to your device and install it here.

## 1. How to use Simple VHD Manager?

After downloading, proceed to unzip the Simple VHD Manager file, then run the file. To add VHD, VHDX or ISO files, you have 2 options - either use the Add button or drag and drop files into.



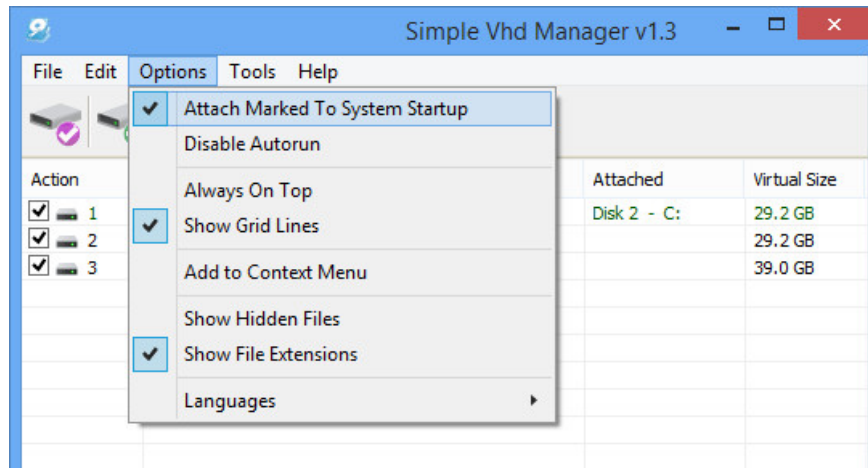
To attach a VHD file, right-click it or use **the Edit menu** .



Also on the menu when you right-click there are other options like Attach, Detach, and Add to Boot Menu. After attaching the VHD file, the item will now turn green and Detach will display.

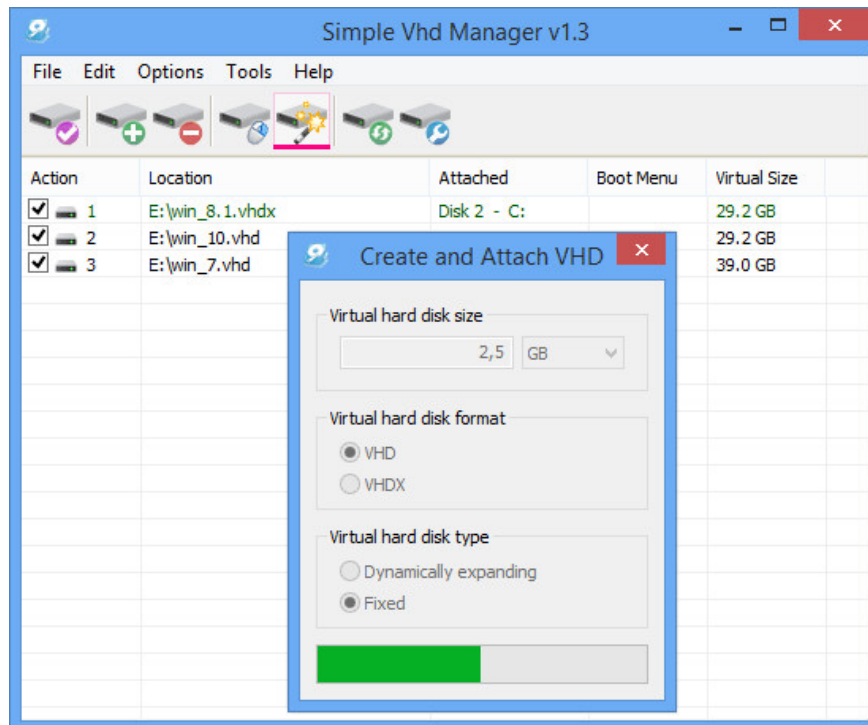
## 2. Attach VHD permanently

To permanently attach a VHD file, select the VHD file, then click Options and select ' *Attach Marked to System Startup* '. Simple VHD Manager will add a service to attach VHD file every time it starts.



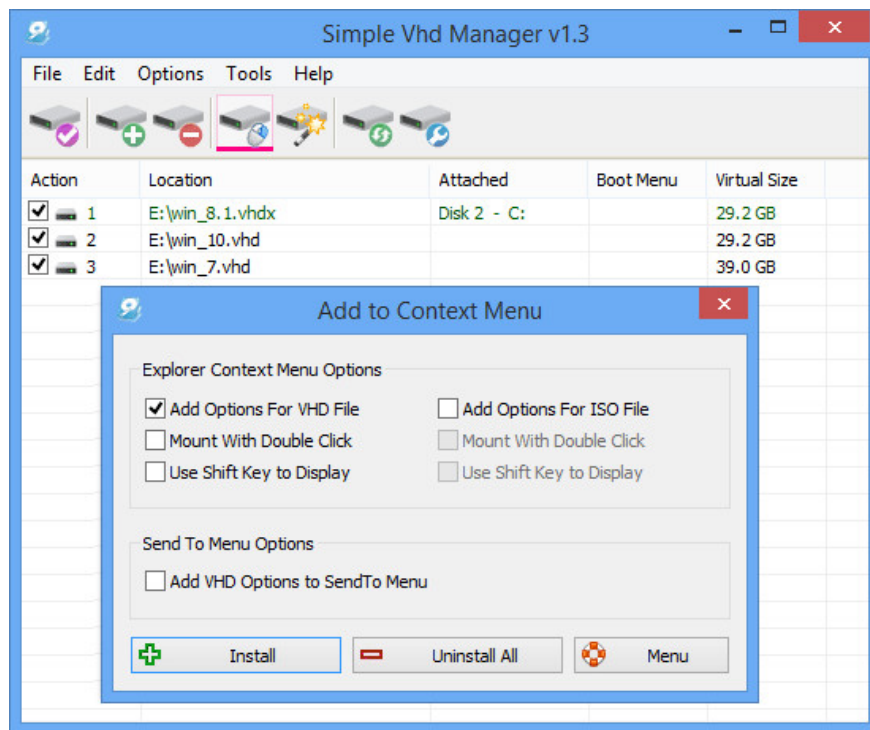
### 3. How to create a VHD or VHDX

To create a VHD or VHDX, select the **Wizard** icon (Create and Attach VHD), then select the size of **Virtual Hard Drive**, format and type.



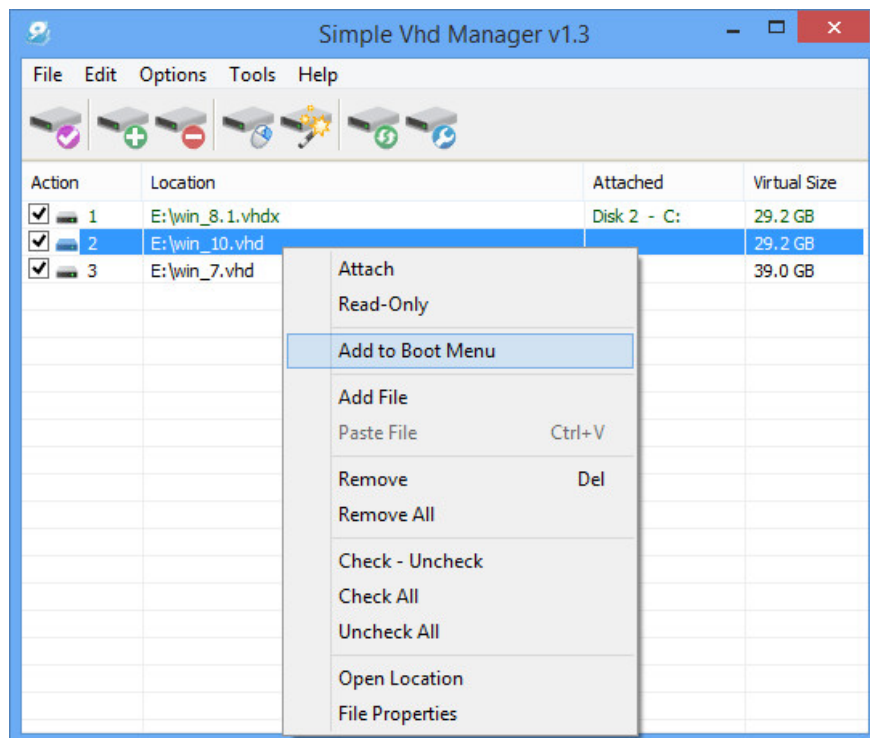
### 4. Add VHD / VHDX / ISO option to the context menu

Click on the 'Add to Context Menu' icon and select the option you want. There are 3 options: **Attach- Detach to right click menu**, **Attach- Detach to sendto menu** and **Attach with double click function**.



## 5. Add Bootable VHD file or ISO file to Boot Menu

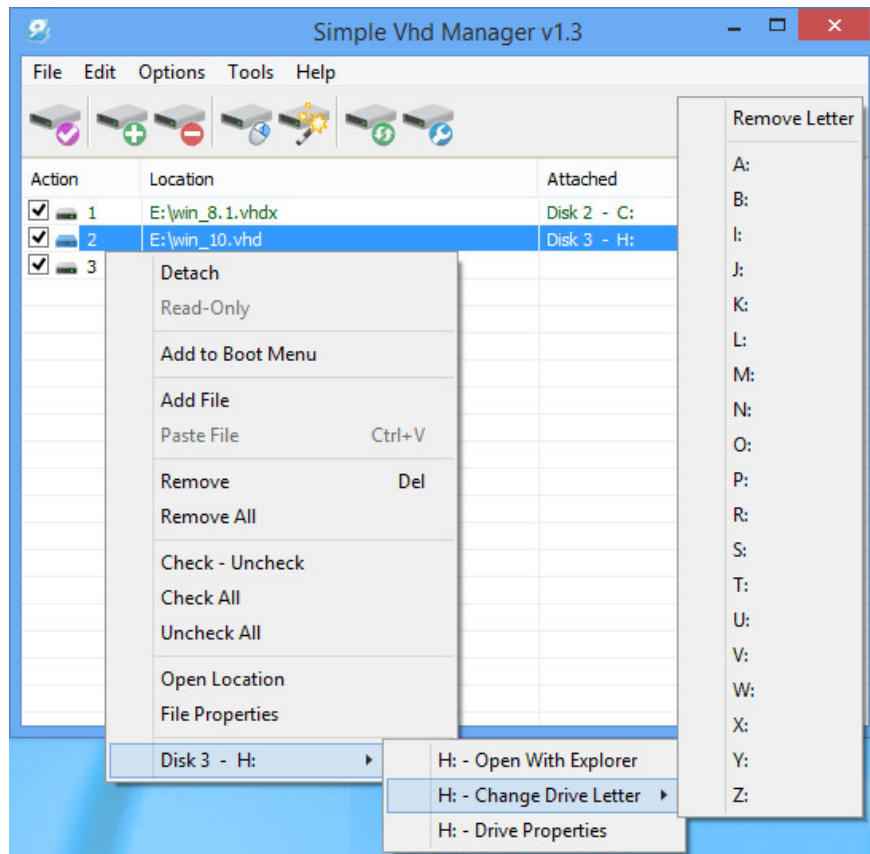
To add a file to the Boot menu, right-click the file and select 'Add to Boot Menu'. At this point, a dialog box appears allowing you to enter any name you want.



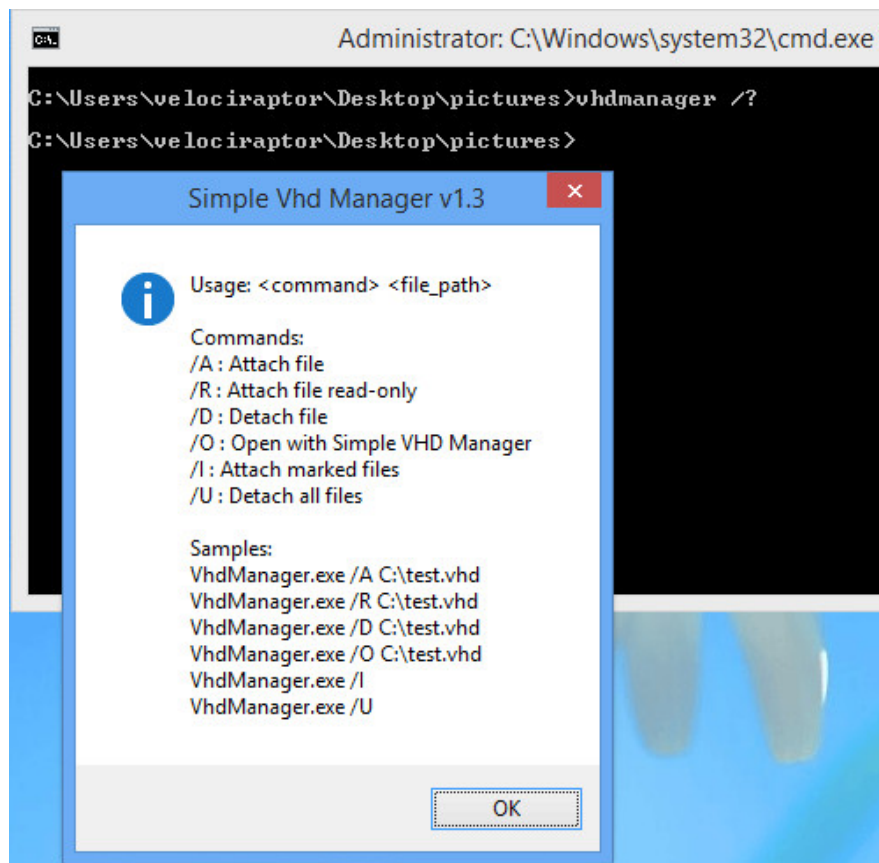
**Note:**

1. Simple VHD Manager can only read its own boot menu.
2. If adding **Bootable ISO image** to the Boot menu, it should be noted that it can only boot from the MBR partition and not from the GTP partition.

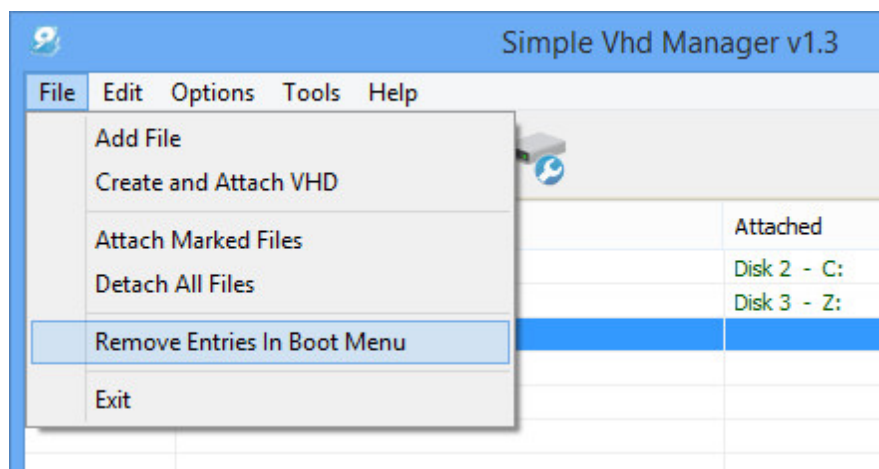
Alternatively, you can change the mount VHD file by using the right-click menu (on the file you selected), but be careful. If you use an imageVHD as the main system or boot from VHD, then you must not change the partition drive letter (C :). "C:" will be the currently used partition window, and changing to another drive will cause a Windows system error.



Simple VHD Manager also supports CMD:



After adding the VHD file or ISO file to **the Bar menu** , you can delete the VHD / ISO file and delete the Simple VHD Manager from the Boot menu. To do this, click **File => Remove Entries in Boot Menu** .



### Refer to some of the following articles:

1. How to check if Windows boots in UEFI or Legacy BIOS mode?
1. Error 'can't change desktop wallpaper' on Windows 10, this is how to fix it
1. Add some solutions to speed up Internet connection on Windows 10 computers

**Good luck!**

You finished reading the article "**Complete usage of Simple VHD Manager**" edited by the [TipsMake](#) team. We hope this article has provided you with many useful tech tips and tricks. You can search for similar articles on tips and guides. Thank you for reading and for following us regularly.

---