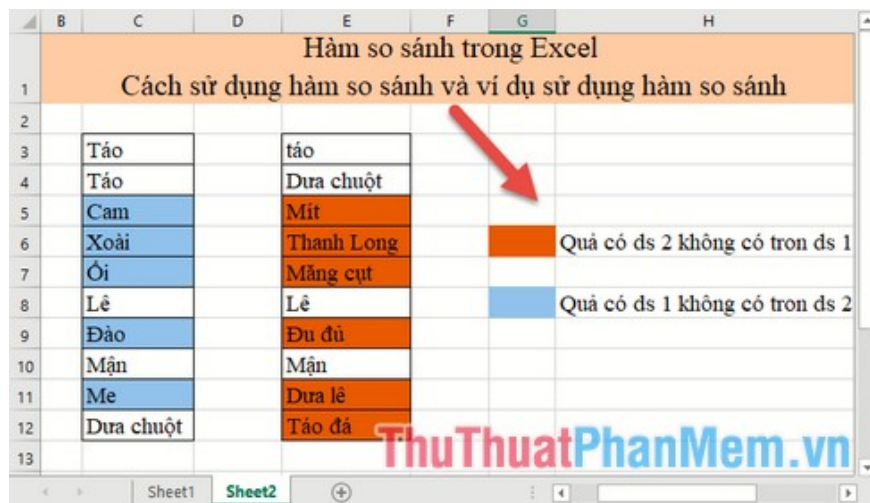


# Comparison functions in Excel - How to use comparison functions and examples using comparison functions

Comparison functions in Excel - How to use comparison functions and examples using comparison functions  
 With a large amount of data, you want to check for duplicates by checking normally, it is really hard. In this article, introduce to you the Functions

With a large amount of data, you want to check for duplicates by checking normally, it is really hard. In this article, I introduce you to the Comparison Functions in Excel, with practical examples to help you easily visualize.



## 1. Use the Exact function to compare data

### Description

The Exact function compares two text strings, returning True if the two strings match, and returning False if the two data strings are different. Note The **Exact** function is case-sensitive.

### Syntax

**EXACT (Text1, Text2)**

Where: **Text1**, **Text2** are two text strings to be compared, are two required parameters.

## Attention

- The **Exact** function is case sensitive, but it does not distinguish format.

## For example

Compare the corresponding data in rows between column 1 and column 2. In the cell to compare enter the formula: **EXACT (D4, E4)**

	B	C	D	E	F	G	H
1	Hàm so sánh trong Excel						
1	Cách sử dụng hàm so sánh và ví dụ sử dụng hàm so sánh						
2							
3			Cột 1	Cột 2	Giá trị trùng		
4			Táo	táo	=EXACT(D4,E4)		
5			Táo	Táo	EXACT(text1, text2)		
6			Cam	Mít			
7			Xoài	Thanh Long			
8			Ói	Mãng cụt			
9			Lê	Mít			
10			Đào	Đu đủ			
11			Mận	Táo			
12			Me	Dưa lê			
13			Dưa chuột	Táo đá			
14							

Pressing **Enter** results returns a **False** value, which means the two values ??do not match because of the first and lowercase letters:

	B	C	D	E	F	G	H
1	Hàm so sánh trong Excel						
1	Cách sử dụng hàm so sánh và ví dụ sử dụng hàm so sánh						
2							
3			Cột 1	Cột 2	Giá trị trùng		
4			Táo	táo	FALSE		
5			Táo	Táo			
6			Cam	Mít			
7			Xoài	Thanh Long			
8			Ói	Mãng cụt			
9			Lê	Mít			
10			Đào	Đu đủ			
11			Mận	Táo			
12			Me	Dưa lê			
13			Dưa chuột	Táo đá			
14							

Similarly copying the formula for the remaining values ??results:

Hàm so sánh trong Excel			
Cách sử dụng hàm so sánh và ví dụ sử dụng hàm so sánh			
	Cột 1	Cột 2	Giá trị trùng
	Táo	táo	FALSE
	Táo	Táo	TRUE
	Cam	Mít	FALSE
	Xoài	Thanh Long	FALSE
	Ổi	Mãng cụt	FALSE
	Lê	Lê	TRUE
	Đào	Đu đủ	FALSE
	Mận	Mận	TRUE
	Me	Dưa lê	FALSE
	Dưa chuột	Táo đá	FALSE

However, with this function, you cannot compare a value in column 1 with all the data in column 2 to find a duplicate. With this function you can only compare rows between themselves.

## 2. Use the Countif intermediate function to compare data

To overcome the situation in example 1, you can use the Countif function as an intermediary to compare the values ??in column 1 against the values ??in column 2.

### Description of the Countif function

- Countif function counts the number of cells that meet certain conditions in the selected data range.

### Syntax

#### COUNTIF (Range, Criteria)

Inside:

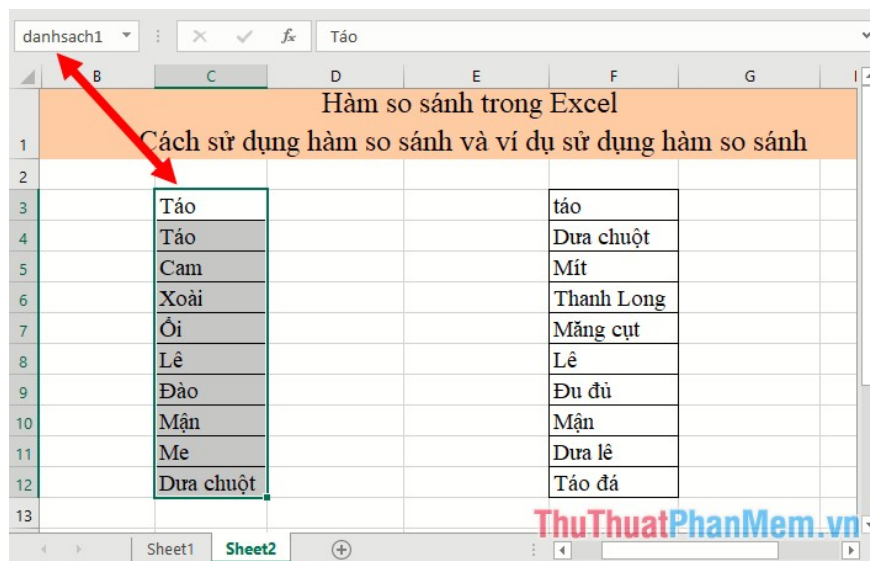
- **Range:** The data area containing the data to be counted, is a required parameter.
- **Criteria:** The condition used to count data, is a required parameter

### For example

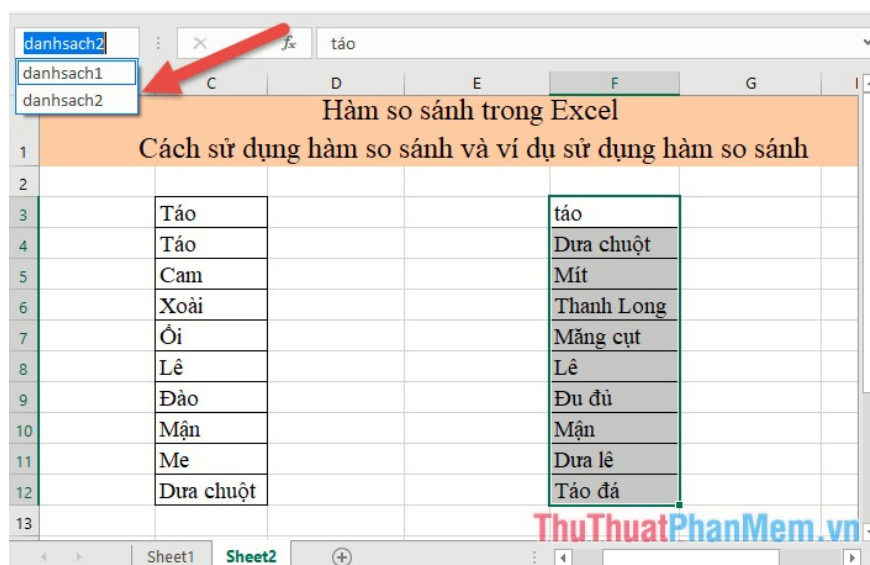
Compare data between 2 columns, highlight values ??not in column 1 but in column 2 and vice versa.

**Step 1:** Name the data columns:

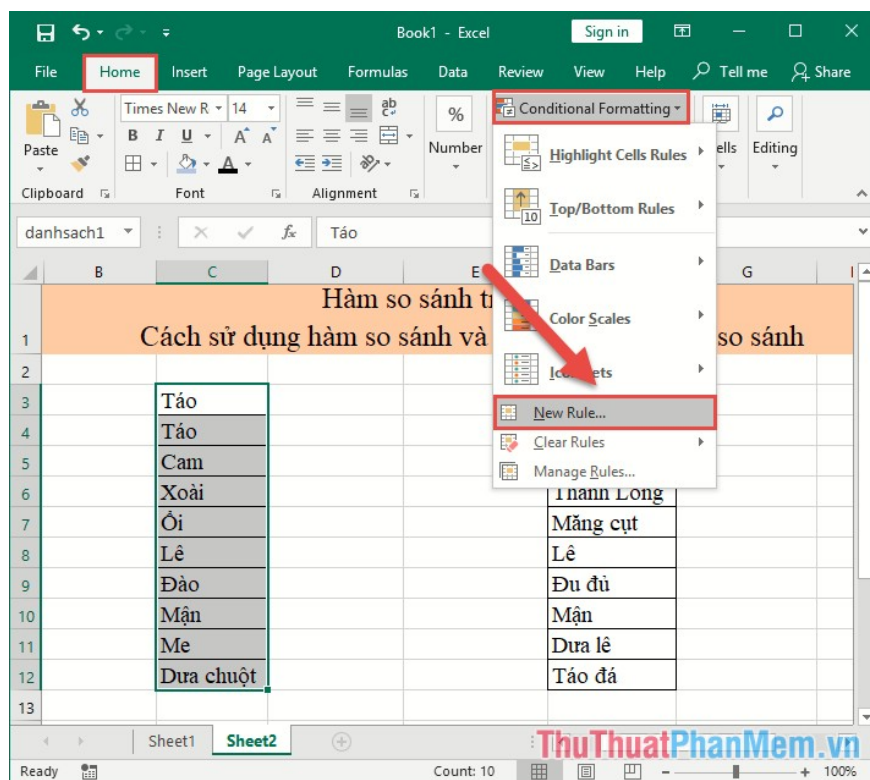
Select the entire column 1 data into the address bar enter listname1 -> press **Enter**.



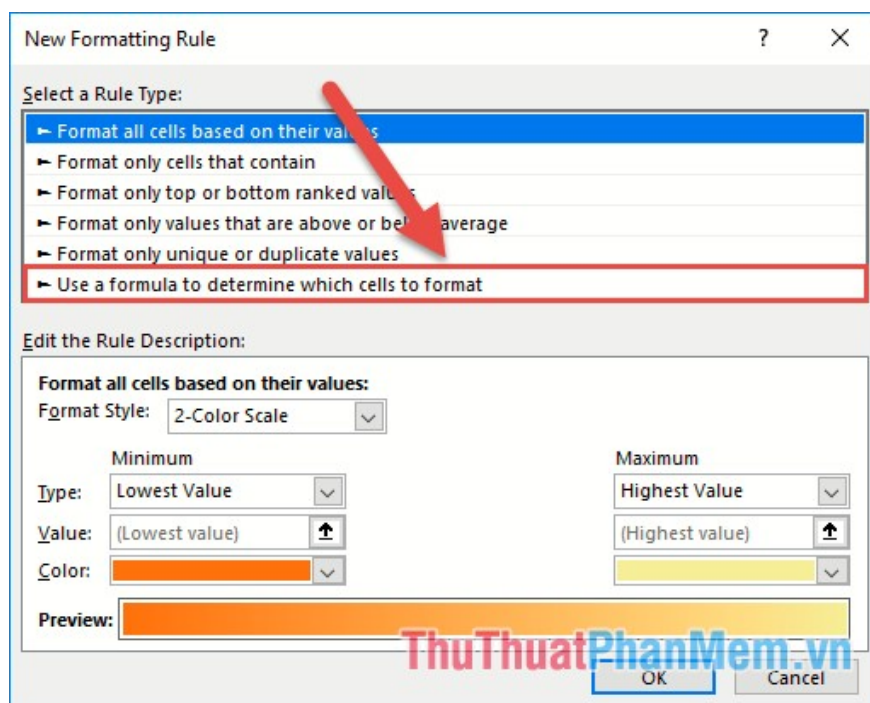
**Step 2:** Similar to the name of column 2, then the names of 2 data columns are displayed:



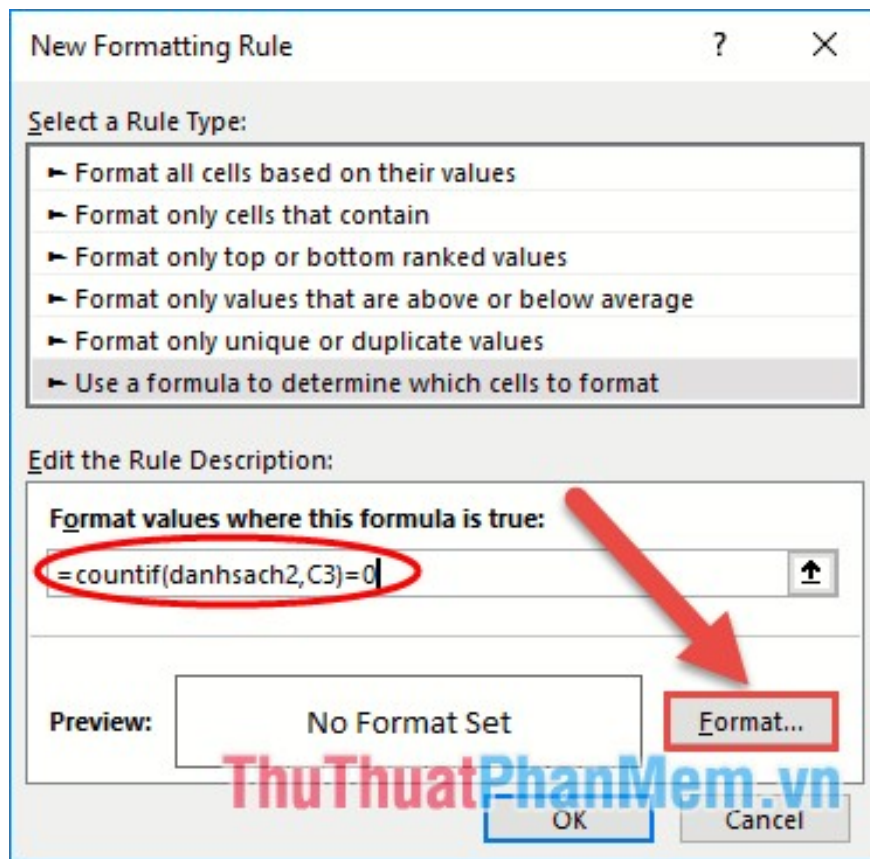
**Step 3:** Select the whole list 1 -> go to **Home** tab -> **Conditional Formatting** -> **New Rule** .



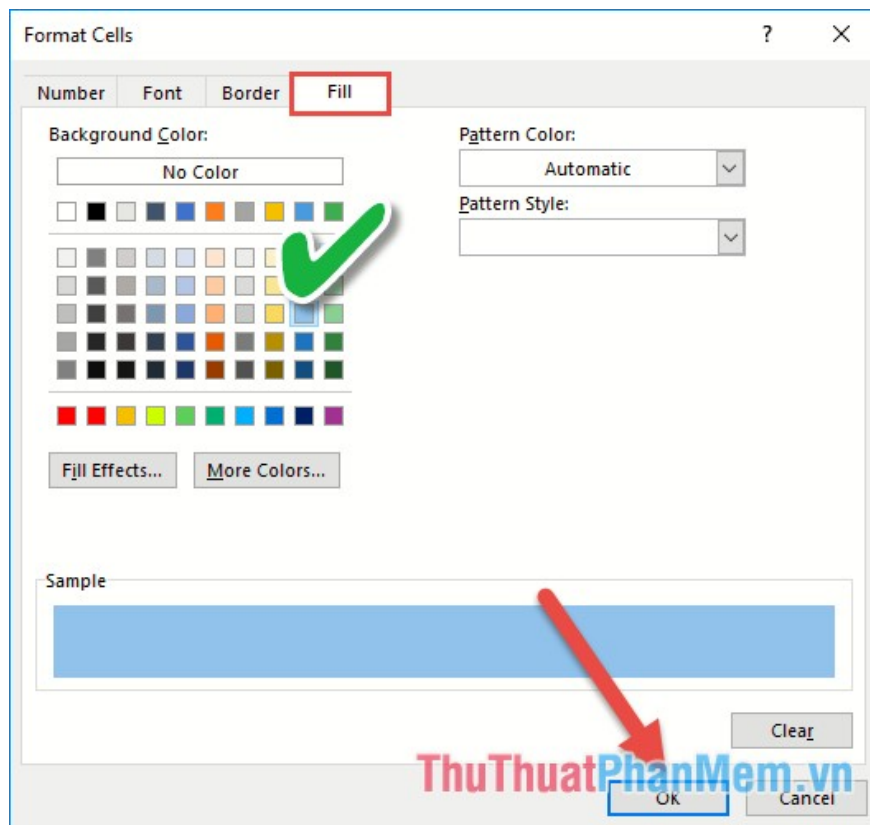
**Step 4:** A dialog box appears, select **Use a formula to determine which cells to format:**



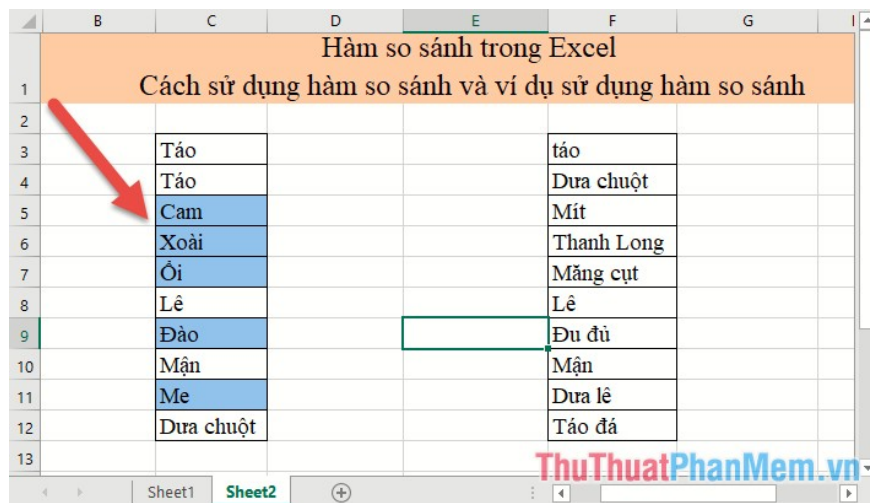
**Step 5:** Enter the formula = **COUNTIF (list2, C3) = 0** then click **Format:**



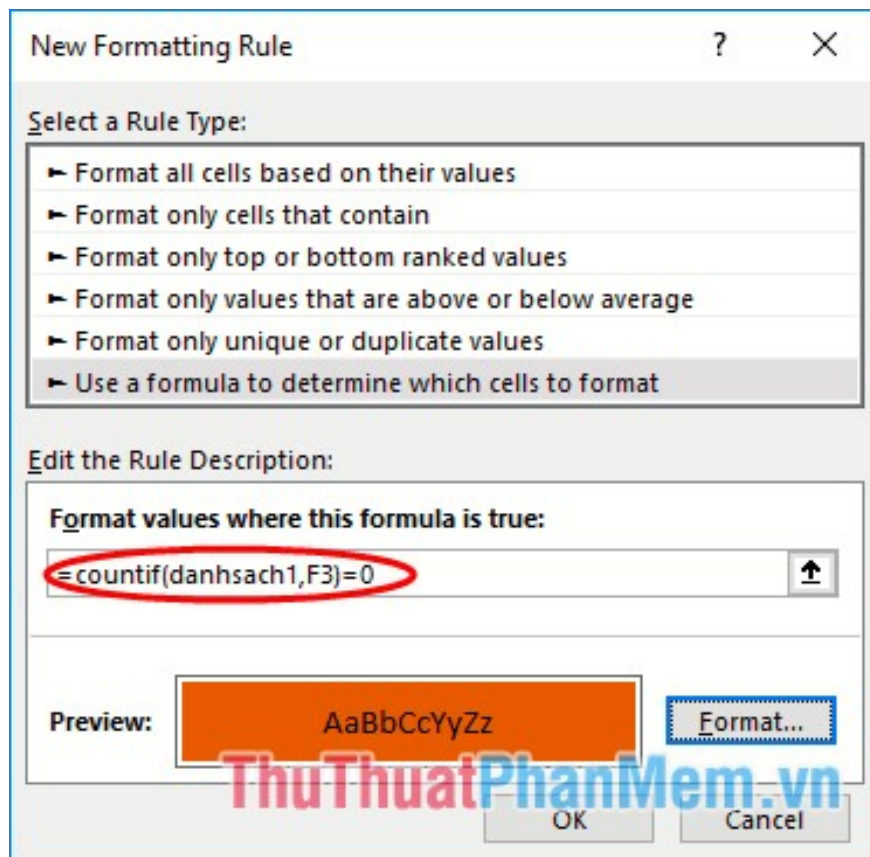
**Step 6:** The **Format Cells** dialog box appears, click the **Fill** tab -> select the color marking the fruit is not in the list 2 -> click **OK**:



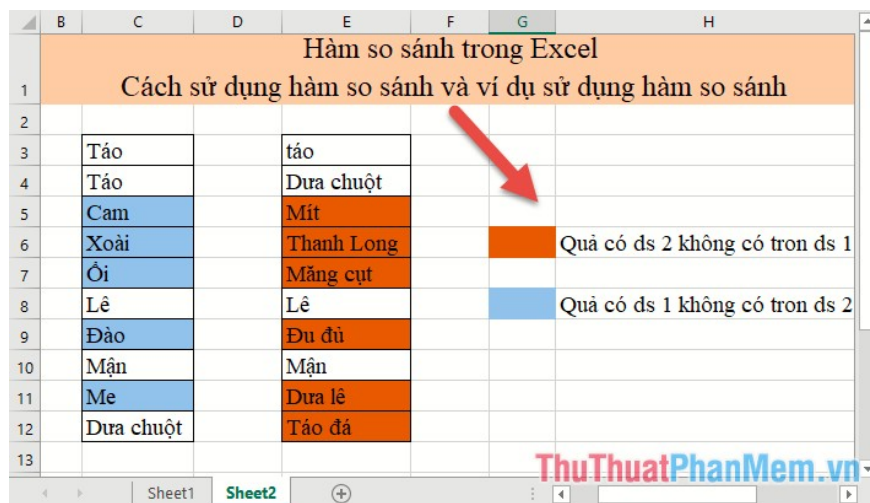
**Step 7:** Next, click **OK** to close the resulting fruits dialog box in List 1, which is not in List 2, which is colored to distinguish:



**Step 8:** Similar to the list 2 you do the same, but only differ from the formula: = **COUNTIF (list2, F3) = 0** , it will color the cell with a value of 0 (not the same)



As a result, you have compared 2 columns of data and can add notes for readers to easily visualize:



Above is an instruction on how to use **EXACT** function , application **COUNTIF** function to compare data in Excel. Good luck!

You finished reading the article "**Comparison functions in Excel - How to use comparison functions and examples using comparison functions**" edited by the [TipsMake](#) team. We hope this article has provided you with many useful tech tips and tricks. You can search for similar articles on tips and guides. Thank you for reading and for following us regularly.

