

Common Run commands for Windows you should know

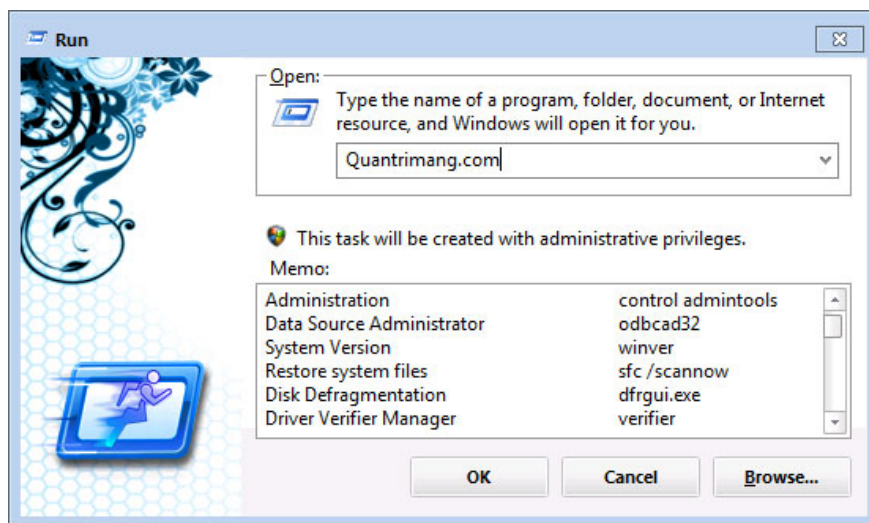
Common Run commands for windows you should know. Summary of Run commands useful in Windows XP, Windows 7, Windows 8 and Windows 8.1. With these Run commands you can work faster, use that more professional computer.

Windows offers a range of tools on the Control Panel that allow users to easily customize most settings on the system. However, sometimes accessing the Control Panel is quite time consuming. In these cases you can use another way to access it faster than through the Run command.

Common Run commands for windows you should know. Summary of **Run** commands useful in Windows XP, Windows 7, Windows 8 and Windows 8.1 (some commands still run on Windows 10 too)

With these Run commands you can work faster, use that more professional computer.

Note: To open the Run window, you just need to press the two keys as the window key and R. Then enter the Run command that you want to use.



Basic Run command for credit

Run commands commonly used for windows:

1. **appwiz.cpl**: open the Add / Remove Program window
2. **calc** : Open personal computer tool

3. **charmap:** opening the board has special characters that you will need when you can't find it on the keyboard
4. **chkdsk:** fix broken files
5. **cleanmgr:** clean up the hard drive (you can choose the drive to clean up)
6. **clipbrd:** opens a window to see what is in the temporary memory of Windows
7. **control:** open Control Panel
8. **cmd:** open the command line window
9. **control mouse:** open the mouse control panel
10. **dcomcnfg:** Open the table of components services available in windows.
11. **debug:** Assembly language programming tool
12. **drwatson :** record and capture programs that crash or crash on windows
13. **dxdiag:** open the DirectX diagnostic panel
14. **explorer:** open Windows Explorer
15. **fontview :** font viewer in graphical form
16. **fsmgmt.msc:** open the shared folders.
17. **firewall.cpl:** use to edit and configure the firewall
18. **ftp :** run ftp program
19. **hostname:** tell us the name of the computer
20. **hdwwiz.cpl :** open the Add Hardware panel
21. **ipconfig:** Displays parameters related to the network card
22. **logoff :** command to logoff the computer
23. **mmc :** open the Microsoft management console panel
24. **mstsc:** used to use remote desktop
25. **mrc:** removal tool for malware
26. **msinfo32 :** Microsoft system information viewer
27. **nbstat:** Displays the current stat and connections using the NetBIOS protocol over TCP / IP
28. **nslookup :** tell us the current local DNS server
29. **osk :** used to open the virtual keyboard
30. **perfmon.msc :** used to configure screen operation
31. **ping:** send data to a specific host / Ip
32. **powercfg.cpl:** used to configure options for using power in the device
33. **regedit:** Registry editing tool
34. **regwiz :** open the Registration table
35. **sfc / scannow:** use to check the file system
36. **sndrec32:** open Sound Recorder (the windows recorder available)
37. **shutdown:** to turn off windows
38. **spider :** open windows spider game
39. **sndvol32:** adjust the loudness of the sound card volume
40. **sysedit :** edit the startup files
41. **taskmgr:** open the task manager window
42. **telephon.cpl :** use to config modem
43. **telnet:** open telnet program
44. **tracert :** used to check traces and display routes to hosts on the internet.
45. **winchat:** Microsoft's chat tool
46. **wmplayer:** open Windows Media Player
47. **wab:** open the Windows address window
48. **winword:** use to open Windows Word application
49. **winipcfg:** display the configuration of IP

50. **winver:** used to check the current version of Windows
51. **wupdmg :** Windows Update configuration.
52. **write:** use to open WordPad.
53. **Pinball:** Pinball game
54. **Control Printer:** Printer Folder
55. **Access.cpl:** access Control Panel
56. **Accwiz:** Accessibility Wizard
57. **Control admintools:** Administrative Tools
58. **Acrobat :** Adobe Acrobat (if installed)
59. **Formdesigner:** Adobe Designer (if installed)
60. **Acrodist:** Adobe Distiller (if installed)
61. **Imageready:** Adobe ImageReady (if installed)
62. **Photoshop :** Adobe Photoshop (if installed)
63. **Wuauclpl.cpl:** Automatic Update
64. **Fsqirt:** Bluetooth Transfer Wizard
65. **Certmgr.msc:** Certificate Manager
66. **Charmap:** Character Map
67. **Chkdsk:** Check Disk Utility
68. **Compmgmt.msc :** Computer Management
69. **Timedate.cpl:** Date and Time Properties
70. **Ddshare:** DDE Shares
71. **Devmgmt.msc :** Device Manager
72. **Directx.cpl :** Direct X Control Panel (if installed)
73. **Dxdiag:** Direct X Troubleshooter
74. **Dfrg.msc:** Disk Defragment
75. **Diskmgmt.msc :** Disk Management
76. **Diskpart:** Disk Partition Manager
77. **Control desktop:** Display Properties
78. **Desk.cpl:** Display Properties
79. **Control color :** Display Properties (w / Appearance Tab Preselected)
80. **Drwtsn32:** Dr.The Watson System Troubleshooting Utility
81. **Verifier:** Driver Verifier Utility
82. **Eventvwr.msc:** Event Viewer
83. **Migwiz:** Files and Settings Transfer Tool
84. **Sigverif :** File Signature Verification Tool
85. **Findfast.cpl:** quick search
86. **Firefox:** Firefox browser (if installed)
87. **Folder:** Folders Properties
88. **Control fonts:** Fonts
89. **Fonts :** Fonts Folder
90. **Freecell:** Free Cell Card Game
91. **Joy.cpl:** Game Controllers
92. **Gpedit.msc:** Group Policy Editor (XP Prof)
93. **Mshearts:** Hearts Card Game
94. **Helpctr :** Help and Support
95. **Hypertrm:** HyperTerminal
96. **iexpress:** Iexpress Wizard
97. **Ciadv.msc:** Indexing Service

98. **icwconn1**: Internet Connection Wizard
99. **iexplore** : Internet Explorer
100. **inetcpl.cpl**: Internet Properties
101. **inetwiz**: Internet Setup Wizard
102. **ipconfig / all**: IP Configuration (Display Connection Configuration)
103. **ipconfig / displaydns**: IP Configuration (Display DNS Cache Contents)
104. **ipconfig / flushdns**: IP Configuration (Delete DNS Cache Contents)
105. **ipconfig / release**: IP Configuration (Release All Connections)
106. **ipconfig / renew**: IP Configuration (Renew All Connections)
107. **ipconfig / registerdns**: IP Configuration (Display DHCP Class ID)
108. **ipconfig / setclassid**: IP Configuration (Modifies DHCP Class ID)
109. **jplicpl32.cpl** : Java Control Panel (if installed)
110. **javaws**: Java Control Panel (if installed)
111. **Control keyboard**: Keyboard Properties
112. **Secpol.msc** : Local Security Settings
113. **Lusrmgr.msc**: Local Users and Groups
114. **Mrt** : Malicious Software Removal Tool
115. **Msaccess** : Microsoft Access (if installed)
116. **Excel**: Microsoft Excel (if installed)
117. **Frontpg** : Microsoft Frontpage (if installed)
118. **Moviemk** : Microsoft Movie Maker
119. **Mspaint**: Microsoft Paint
120. **Powerpnt**: Microsoft Powerpoint (if installed)
121. **Mobsync** : Microsoft Synchronization Tool
122. **Winmine**: Minesweeper Game
123. **Main.cpl**: Mouse Properties
124. **Nero** : Nero (if installed)
125. **Conf**: Netmeeting
126. **Control netconnections**: Network Connections
127. **Ncpa.cpl**: Network Connections
128. **Netsetup.cpl**: Network Setup Wizard
129. **Notepad** : Notepad
130. **Nvtuicpl.cpl**:Nview Desktop Manager (if installed)
131. **Packager**: Object Packager
132. **Odbc32.cpl**: ODBC Data Source Administrator
133. **Ac3filter.cpl**: Opens AC3 Filter (if installed)
134. **Msimn**: Outlook Express
135. **Pbrush**: Paint
136. **Password.cpl**: Password Properties
137. **Perfmon.msc**: Performance Monitor
138. **Perfmon**: Performance Monitor
139. **Dialer**: Phone Dialer
140. **Control printers**: Printers and Faxes
141. **Printers**: Printers Folder
142. **Eudcedit**: Private Character Editor
143. **QuickTime.cpl**: Quicktime (if installed)
144. **Quicktimeplayer**: Quicktime Player (if installed)
145. **Realplay**: Real Player (if installed)

146. **intl.cpl**: Regional Settings
147. **Regedit32**: Registry Editor
148. **Rasphone**: Remote Access Phonebook
149. **Ntmsmgr.msc**: Removable Storage
150. **Ntmsoprq.msc** : Removable Storage Operator Requests
151. **Rsop.msc** : Resultant Set of Policy (XP Prof)
152. **Sticpl.cpl**: Scanners and Cameras
153. **Control schedtasks**: Scheduled Tasks
154. **Wscui.cpl**: Security Center
155. **Services.msc**: Services
156. **Fsmgmt.msc**: Shared Folders
157. **Mmsys.cpl** : Sounds and Audio
158. **Spider**: Spider Solitaire Card Game
159. **Cliconfg**: SQL Client Configuration
160. **Sysedit**: System Configuration Editor
161. **Msconfig**: System Configuration Utility
162. **Sfc / scanonce**: System File Checker Utility (Scan Once At The Next Boot)
163. **Sfc / scanboot**: System File Checker Utility (Scan On Every Boot)
164. **Sfc / revert**: System File Checker Utility (Return Scan Setting To Default)
165. **Sfc / purgecache**: System File Checker Utility (Purge File Cache)
166. **Sfc / cachesize = x**: System File Checker Utility (Cache Size Set to size x)
167. **Sysdm.cpl** : System Properties
168. **Tcptest**: TCP Tester
169. **Tweakui**: Tweak UI (if installed)
170. **Nusrmgr.cpl**: User Account Management
171. **Utilman**: Utility Manager
172. **Wabmig**: Windows Address Book Import Utility
173. **Ntbackup** : Windows Backup Utility (if installed)
174. **Magnify** : Windows Magnifier
175. **Wmingmt.msc**: Windows Management Infrastructure
176. **Msmmsgs**: Windows Messenger
177. **Wiaacmgr**: Windows Picture Import Wizard (if you need to connect the camera)
178. **Syskey** : Windows System Security Tool
179. **Winver**: Windows Version (displays Windows operating system version)
180. **Tourstart**: Windows XP Tour Wizard

Refer to some of the following articles:

1. Certain deadly commands never run on Linux
1. Summary of 20 common Run commands on Windows operating system
1. Speed ??up Internet connection by using CMD command on WindowsXP / 7/8 / 8.1

Wish you have moments of fun!

You finished reading the article "**Common Run commands for Windows you should know**" edited by the [TipsMake](#) team. We hope this article has provided you with many useful tech tips and tricks. You can search for similar articles on tips and guides. Thank you for reading and for following us regularly.

