

Common errors when using Rufus and the simplest and most effective ways to fix them

Rufus is an application that helps users format USB and create a Windows installation drive. During the process of installing and using Rufus, errors are inevitable. If you are encountering a Rufus error and don't know how to fix it, you can refer to the instructions in the article below and follow the steps.

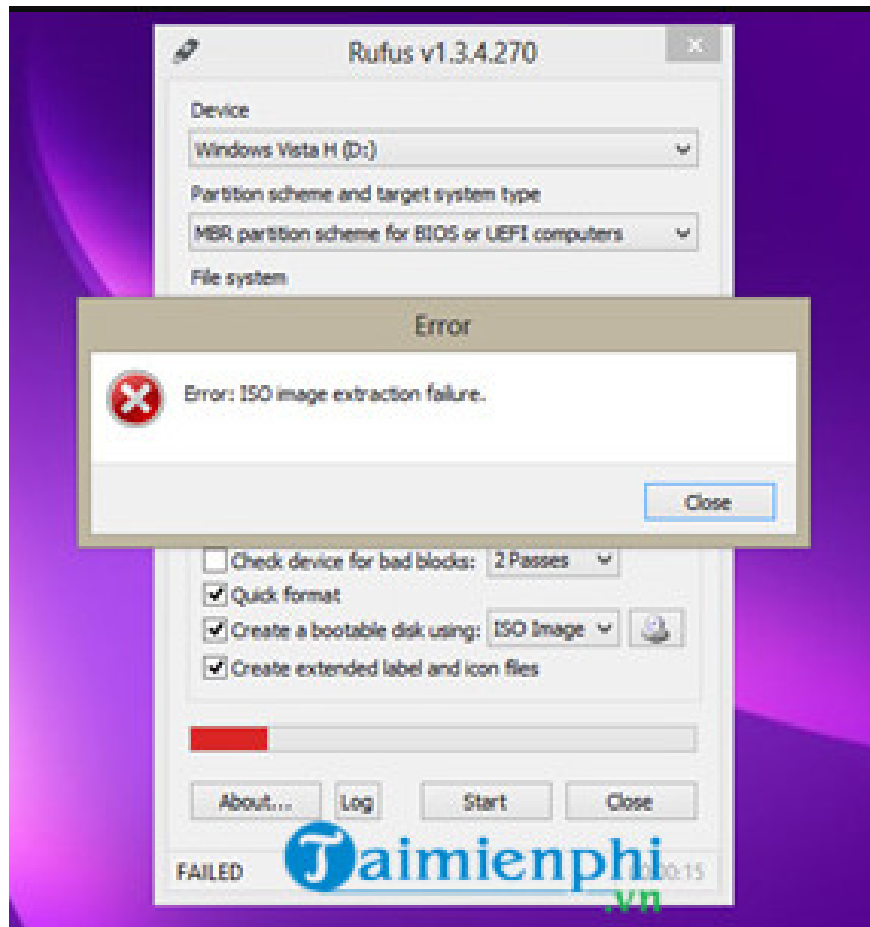
"ISO image extraction failure" is a common Rufus error that users encounter most when creating USB Boot. Continue reading TipsMake's article below to learn how to fix common errors when using Rufus.

Common errors when using Rufus

1. ISO image extraction failure when creating USB Boot using Rufus

The cause of ISO image extraction failure when creating a USB Boot with Rufus is mainly due to faulty system settings or the Windows Registry.

Specifically, during the process of installing or uninstalling software and applications installed on the system incorrectly, invalid keys are created in the Windows Registry. In addition, some other causes of ISO image extraction failure may be due to your computer being attacked by viruses or malware, the system not shutting down properly due to a sudden power outage or other factors. .



To fix this error when using Rufus, follow the steps below:

Step 1: Check the ISO file to see if there are errors during the download process. Also try checking your USB drive to see if it is working properly.

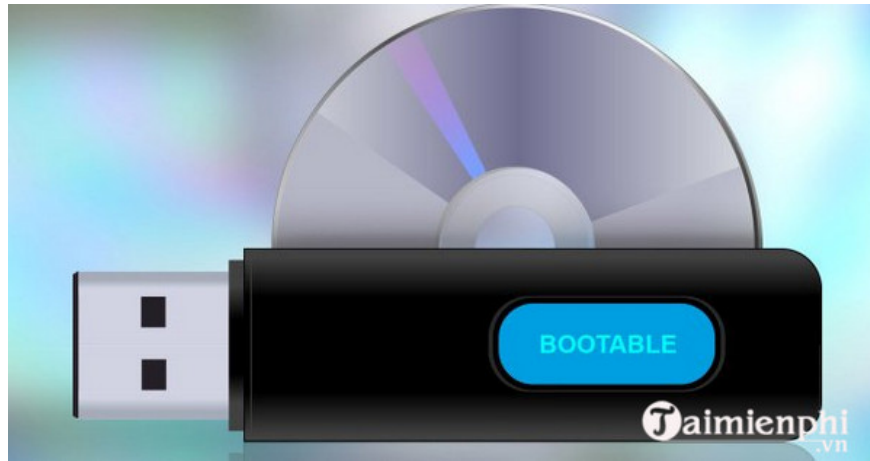
Step 2: If the above method does not work, try installing and using specialized software to fix Windows Registry errors, then check to see if the Rufus ISO image extraction failure error still exists or not.

Step 3: The final solution is to use other USB Boot creation software to replace Rufus.

2. Rufus error not working

In case if Rufus is not working on your Windows computer, the only solution to fix the error is to use Rufus replacement software.

Some software designed to support creating USB Boot similar to Rufus that you can refer to is: Etcher (supports all Windows, Mac and Linux platforms) and UNetbootin.



- Download Etcher to your device and install it here: [Download Etcher](#)
- Download UNetbootin to your device and install it here: [Download UNetbootin](#)

The above article TipsMake has just shown you how to fix common Rufus errors when using it. In addition, if you still have any questions or concerns such as [How to create a bootable USB with Rufus](#), readers can leave their comments in the comments section below the article.

You finished reading the article "[Common errors when using Rufus and the simplest and most effective ways to fix them](#)" edited by the [TipsMake](#) team. We hope this article has provided you with many useful tech tips and tricks. You can search for similar articles on tips and guides. Thank you for reading and for following us regularly.