

Combine Windows XP and Vista machines on the same network

On small business networks or home networks, some machines have been upgraded to Windows Vista and some have Windows XP operating systems. Usually they work with each other like 'cats and dogs'. With a role

On small business networks or home networks, some machines have been upgraded to Windows Vista and some have Windows XP operating systems. Usually they work with each other like 'cats and dogs'. As an admin, you may need to adjust so that they obediently cooperate with each other and offer the most efficient, productive productivity performance.

When you combine Windows XP and Windows Vista on the same peer-to-peer network like a home network or in a small business, you'll encounter a lot of problems. It is possible that Windows Vista machines will find it difficult to find Windows XP or vice versa.

And Windows Vista Network Map, rated as the best networking component Microsoft has ever included in Windows, may not function properly on XP machines. They will not display network maps or even display anything.

Fix workgroup problems The first problem is that the default workgroup name on the network will be changed from Windows XP to Windows Vista. In Windows XP, this default name is *Mshome* , while in Windows Vista is *Workgroup* .

Fixing this problem is not difficult. You can change the workgroup name on Windows XP to match the name on the Windows Vista network. Do the following: on Windows XP, right-click **My Computer** , select the **Computer Name** tab, and then click **Change** . A screen appears. In **Workgroup** , type the network name of Windows Vista. If you use the default name in Windows Vista, type *Workgroup* . If not, change it to whatever name you have set for the Windows Vista network and click **OK** .



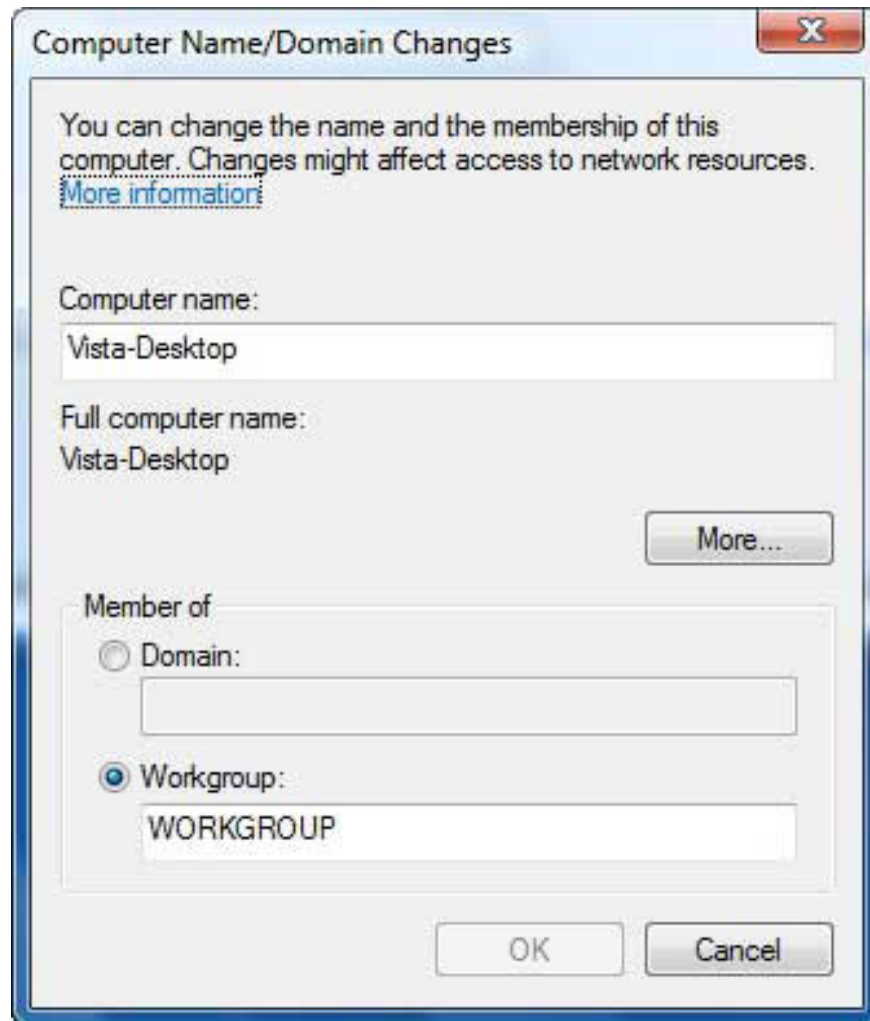
Change the workgroup name in Windows XP

After clicking **OK** , you will see a confirmation dialog box as shown below. Click **OK** again and restart the computer.



Successful - you have changed the workgroup name

Or you can create new workgroup names for both Windows XP and Windows Vista, but these names must match on both machines. To change the workgroup name in Windows Vista, right-click **Computer** and select **Properties** . Select **Change Settings** , from the window that appears, select **Change** . In the dialog box (shown below), type the new name for workgroup and click **OK** .



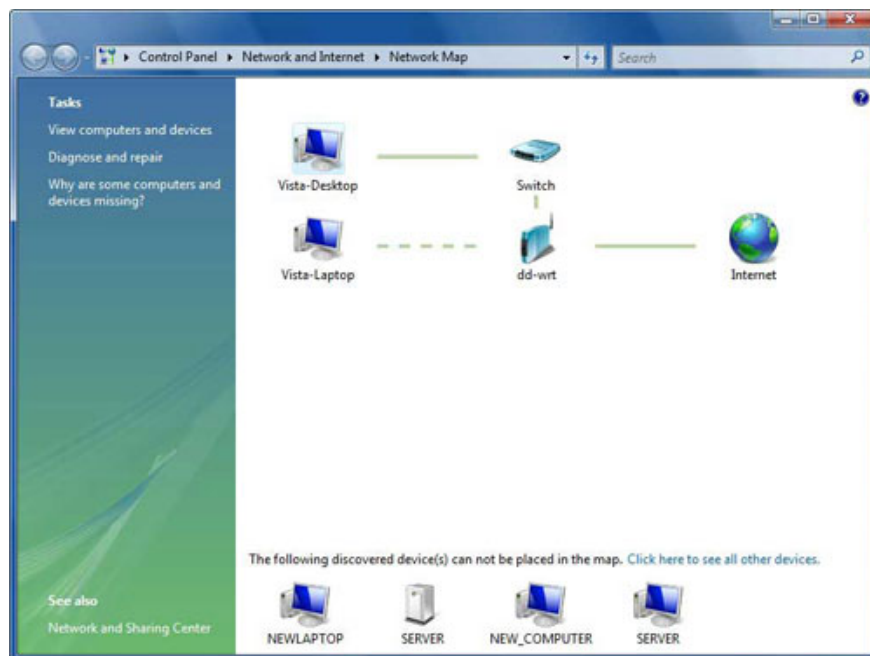
Change the workgroup name in Windows Vista

As with Windows XP, you will receive a dialog box confirming the changed name and restarting the computer for the changes to take effect.

Let Windows XP be compatible with Windows Vista

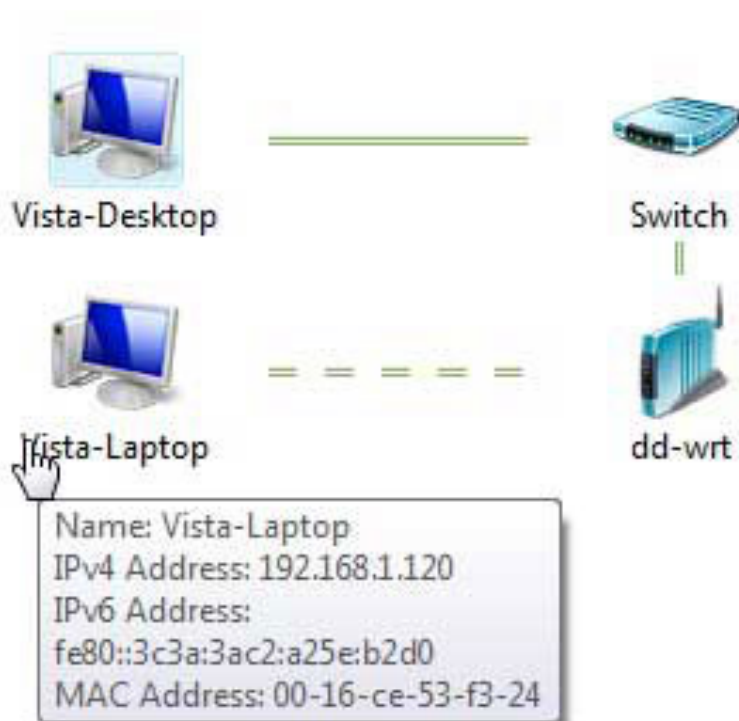
Make sure that both Windows XP and Windows Vista are on the same workgroup. And the other bigger problem we need to deal with is now on the Windows Vista network diagram.

Network diagrams are the best components that Windows Vista adds to the network. To use it, go to **Control Panel -> Network and Internet -> Network and Sharing Center -> View full map** . A screen like below appears.



Network diagram of Windows Vista

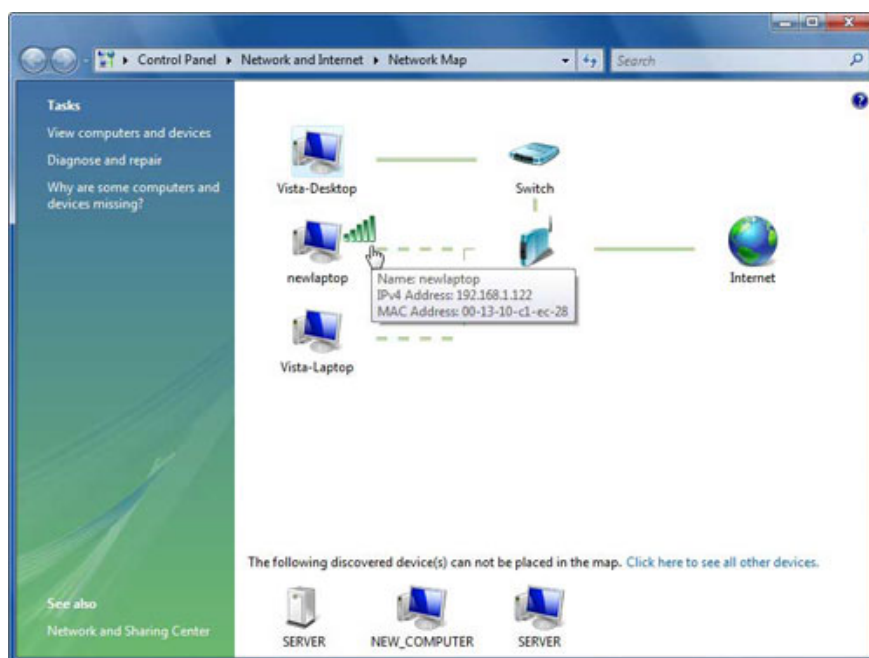
The network map will show all PCs and devices attached to the network, that is, what is in your overall network, not just in the workgroup. This diagram looks pretty and extremely useful. Hover your mouse over any device, you will be given information about it, such as your name, IP address and MAC physical address (as shown below). Click on a PC and you will connect to it.



Hover your mouse over any device on the network, you will have detailed information about the device. However, there is a drawback. Looking at the bottom of the screen in the network diagram above, you will see some devices listed. Windows Vista found them but didn't quite know what to do with them. It can't sketch the location of each device on the network and doesn't give you information unless you hover over the device you want to know.

The problem is that in order to get information about devices, Windows Vista must use a new protocol called Link Layer Topology Discovery (LLTD). LLTD is built into all Windows Vista PCs, but Windows XP is not available. That's why Vista can display diagrams of network devices and XP doesn't.

You can fix the problem by downloading and installing **Layer Topology Discovery Responder** on Windows XP. Meanwhile, Windows XP computers can also display network diagrams, exact locations and information about them as shown below.



An XP machine can now be displayed directly on the network map

You finished reading the article "**Combine Windows XP and Vista machines on the same network**" edited by the [TipsMake](#) team. We hope this article has provided you with many useful tech tips and tricks. You can search for similar articles on tips and guides. Thank you for reading and for following us regularly.