

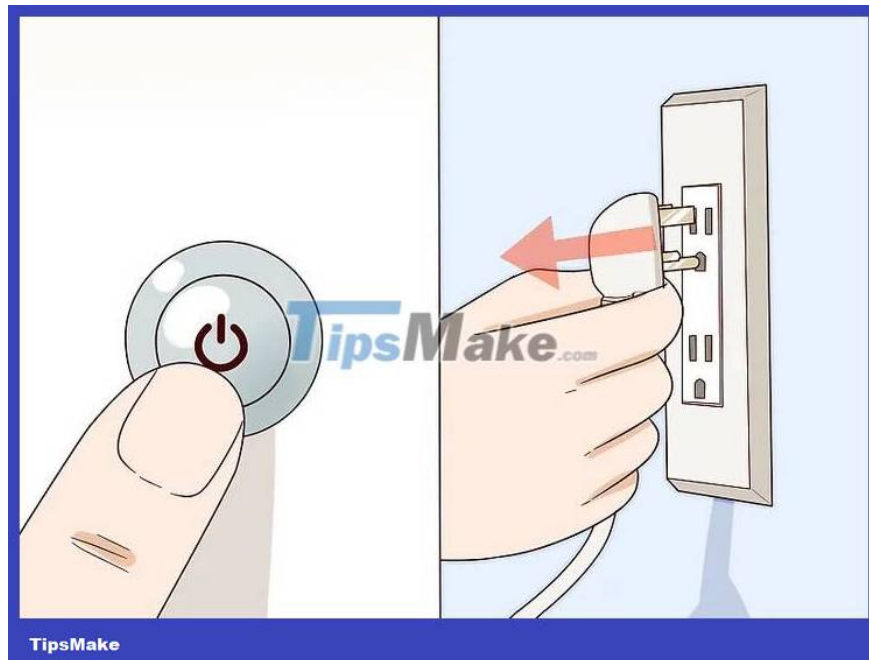
Cleaning your washing machine's sediment filter is simple with these simple steps

In the article below, we will guide you how to clean the washing machine's sediment filter simply and effectively.

Handling large quantities of dirty clothes and high humidity inside the washing machine are the main causes of bacteria and mold as well as fouling of the sediment filter. Regularly cleaning the sediment filter helps minimize the risk of pathogens spreading, ensuring health, quality and increasing the lifespan of the washing machine.

Locate and remove the sediment filter from the machine

Step 1: Turn off the washing machine and do not leave clothes inside the washing drum. Then, turn off the power supply to the machine. Wrap the power cord neatly and place it in a dry place.



Step 2: Identify the washing machine's sediment filter. Normally, for front-loading washing machines, the sediment filter will be located in the right corner of the machine body. Some washing machines will have a mesh bag filter inside the washing drum. For front-load washing machines, the sediment filter will be located behind the machine body. If you cannot locate the sediment filter, you should read the user manual that comes with the machine.

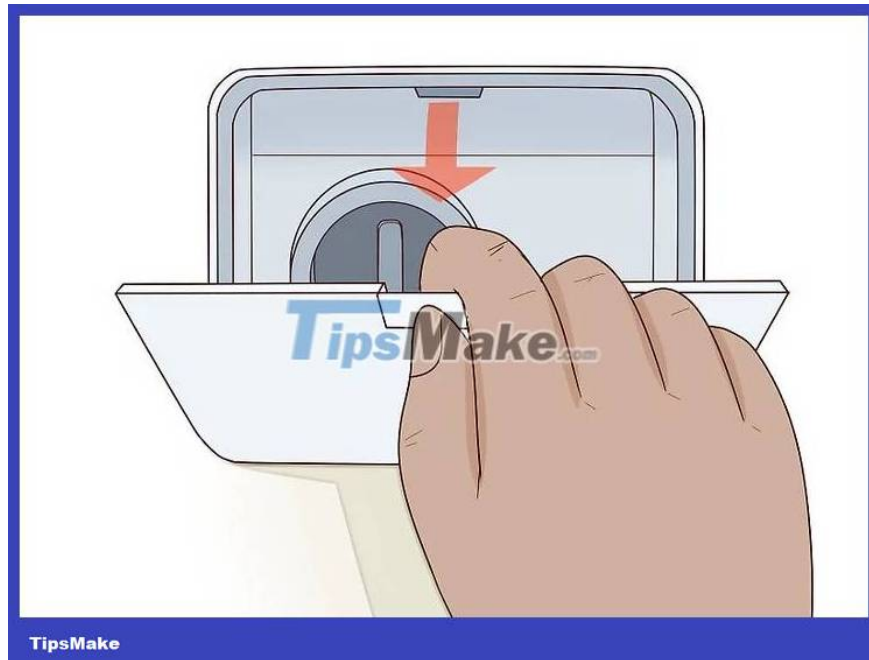


TipsMake

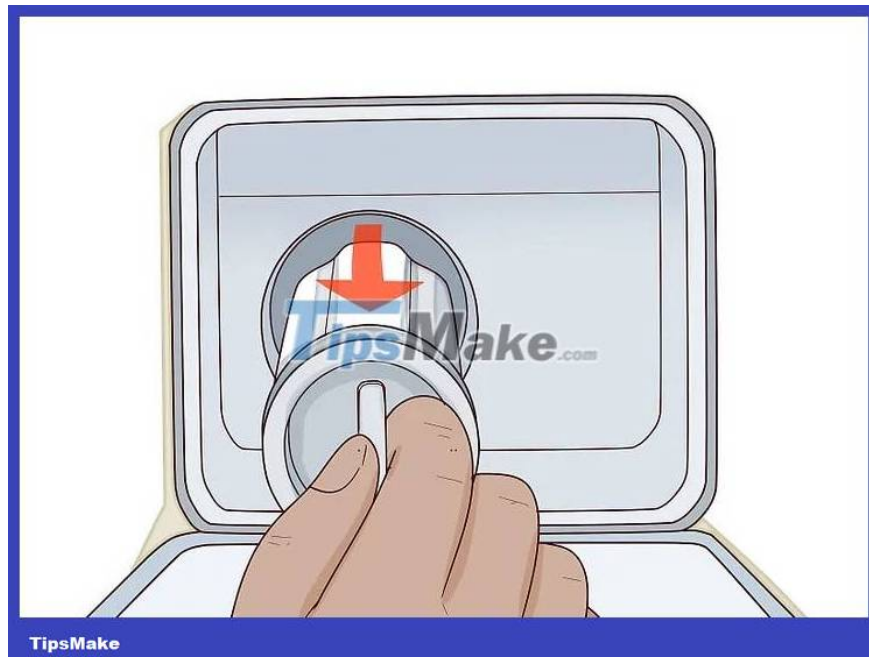


TipsMake

Step 3: Place a rag underneath to prevent dirty water left inside the waste discharge pipe from leaking out. Some washing machines have a child-safe lid design. You should use a small, hard object to pry the lid off.



Step 4: Carefully remove the sediment filter from the machine. If it's too hard, you can gently rotate the sediment filter to get it out.



Clean the filter

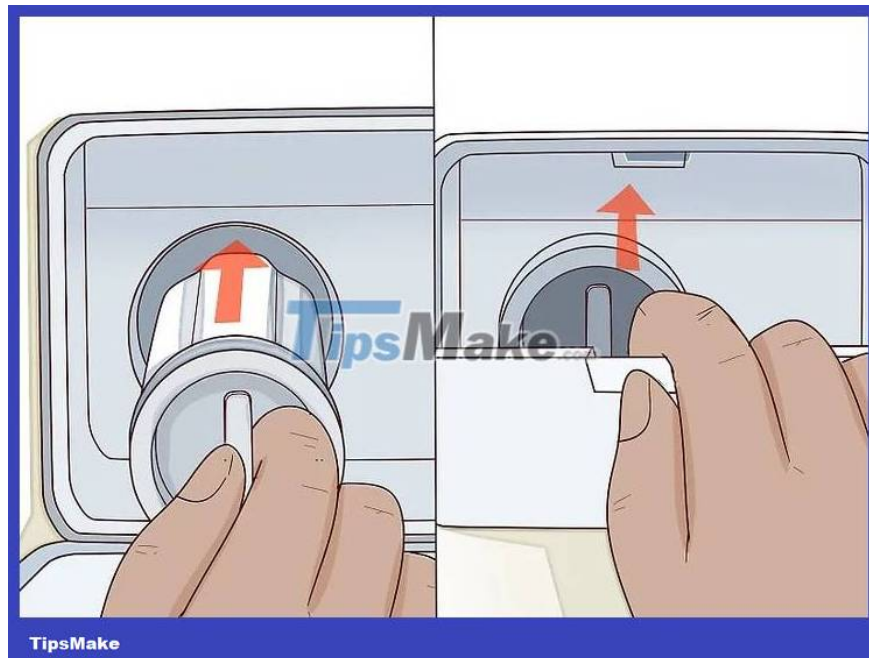
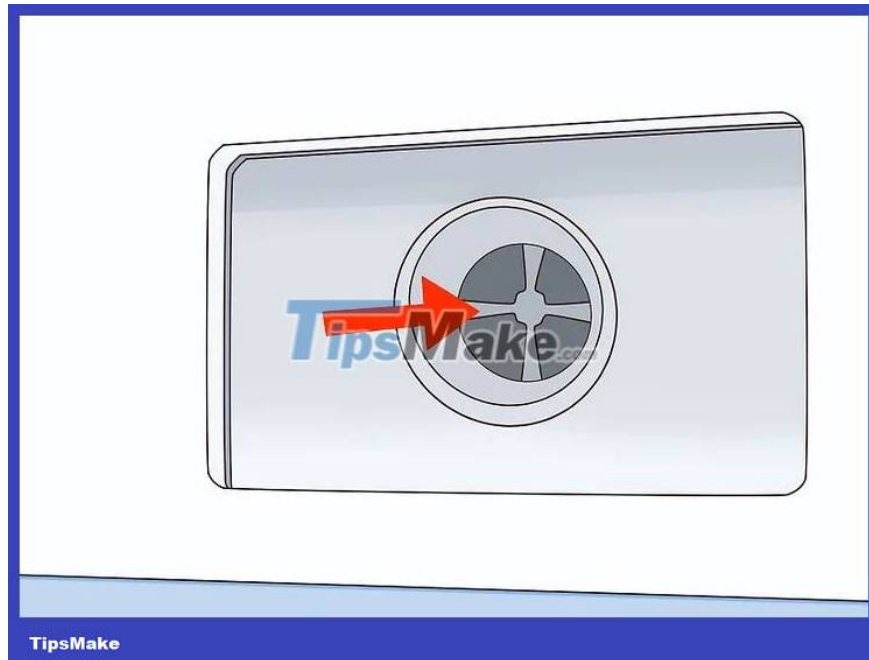
Step 1: Use a damp cloth or small, soft-bristled brush to remove residue.



Step 2: Remove the filter from the residue filter, empty the residue and soak in hot water for about 10 minutes to remove any fabric fibers or residue that cannot be cleaned by a towel or brush.



Step 3: Check the filter compartment in the washing machine. Wipe off any remaining dirt with a damp cloth and then return the filter to its original position.



Note: You need to carefully check whether the sediment filter is installed correctly by briefly starting the washing process without clothes. If the location where the sediment filter is located is leaking water, you need to reinstall it.



Tips to help prolong filter life

1. Clean the sediment filter periodically, at least 4 times/year.
2. Find the cause and fix it immediately when there is a problem with the sediment filter.
3. For front-load washing machines, the outer edge of the washing drum has a rubber sheet placed to close the washing lid, preventing water from leaking out. At that time, you should also clean this rubber rim.
4. Even if you clean the residue filter periodically, residue left on the rubber rim will stick to your clothes and get stuck in the filter during subsequent washes. Using a small cloth to wipe off remaining residue will also help prolong the life of the filter.

Hopefully with the above simple steps, you can easily clean the sediment filter to avoid clogging the water, ensure your health and increase the life of your washing machine.

You finished reading the article "**Cleaning your washing machine's sediment filter is simple with these simple steps**" edited by the [TipsMake](#) team. We hope this article has provided you with many useful tech tips and tricks. You can search for similar articles on tips and guides. Thank you for reading and for following us regularly.