

# Check the version of Windows 10 installed on your computer.

Checking your Windows 10 version is a difficult trick to perform because Microsoft has removed the display of the installed Windows 10 version on your computer. However, you can use the trick in this TipsMake article to find out which version of Windows 10 is installed.

As is known, Microsoft has changed the way it releases updates on Windows 10. Even when updating via Windows Update, users will not be able to see what the current update version is, for example, Windows Service Pack 1 or Windows 10.1.



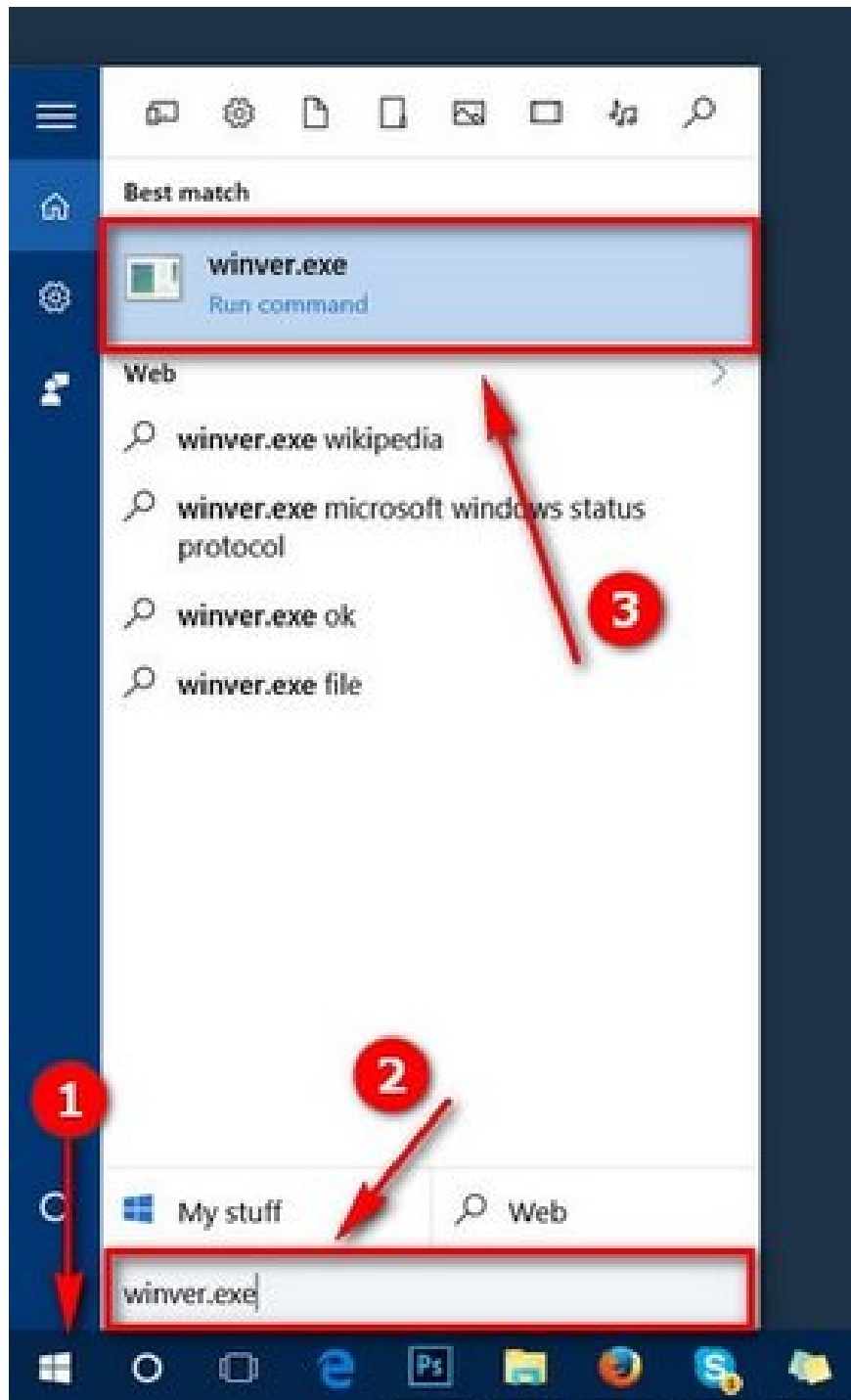
This makes it difficult for users to install applications and software on their computers.

Many readers have asked how to check if their computer is 32-bit or 64-bit, and now they're asking how to check the installed Windows version. Therefore, TipsMake is pleased to present a detailed guide on how to check the Windows 10 version currently installed on your computer.

Check your Windows 10 version, check the installed version of Windows 10.

## Method 1: Using commands

*Step 1:* Press the **Windows key** or press the **Windows + R** key combination , type **winver.exe** into the search bar and press **Enter** .



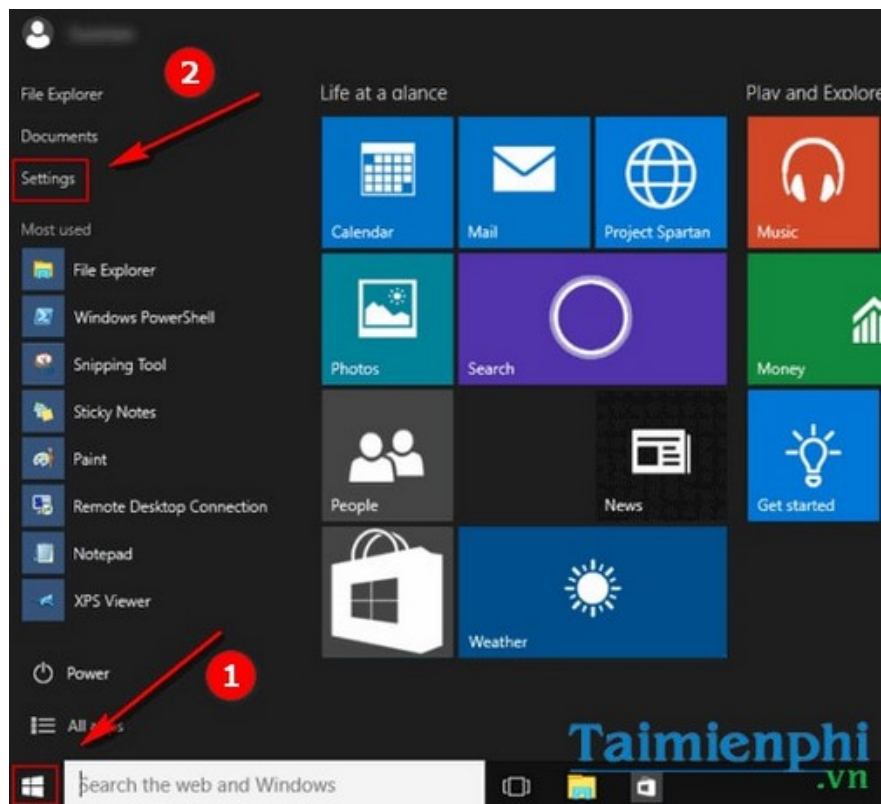
*Step 2 : The **About Windows** program window appears. Here, users can find information related to the version of Windows 10 currently installed on the computer, and even previously installed versions.*



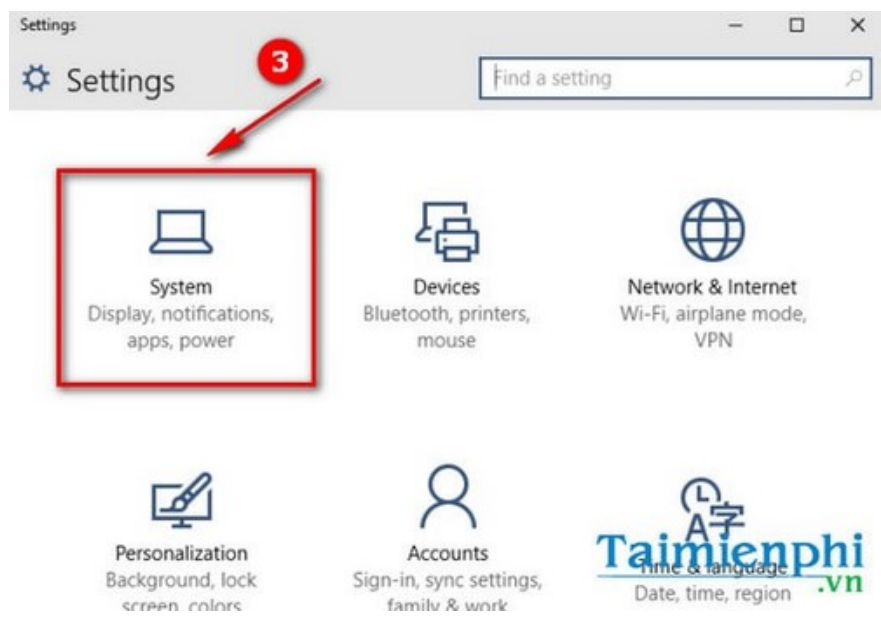
*Step 3* : The program will list the version and build number so that users can learn more about the version of Windows currently installed on their machine.

### **Method 2: Check in settings**

*Step 1*: Press the **Windows** key -> **Settings** .



Step 2: In **Settings**, select **System** .



Step 3 : Scroll down and select **About**



Here you can find information related to the version and build code of Windows 10.

### Learn about Windows 10 versions

The version using 4 digits is related to the release date:

- **1507:** The first version of Windows 10 was released (July 2015).
- **1511:** the first major update to Windows 10 (November 2015).
- **1607:** The second major update for Windows 10, also known as the Anniversary Update for Windows 10 (July 2016).

### Learn about the operating system build.

The build number of an operating system provides similar information to the version number. However, there will be some slight differences.

- **10240:** The first build was released in July 2015.
- **10586:** This build is from the first major update released in November 2015.
- **14393:** This is the build for the second major update released on August 2, 2016.

Note that the Anniversary Update will be released in August 2016, but version 1607 means July 2016.

In summary, TipsMake has successfully shown you how to check the version of Windows 10 currently installed on your computer. You need to carefully read the information related to Windows 10 versions and builds to know how to update to newer versions with higher security. After checking your Windows 10 version, if it's not the latest version, you should update Windows 10 to use the new version with many attractive features.

You finished reading the article "**Check the version of Windows 10 installed on your computer.**" edited by the [TipsMake](#) team. We hope this article has provided you with many useful tech tips and tricks. You can search for similar articles on tips and guides. Thank you for reading and for following us regularly.

