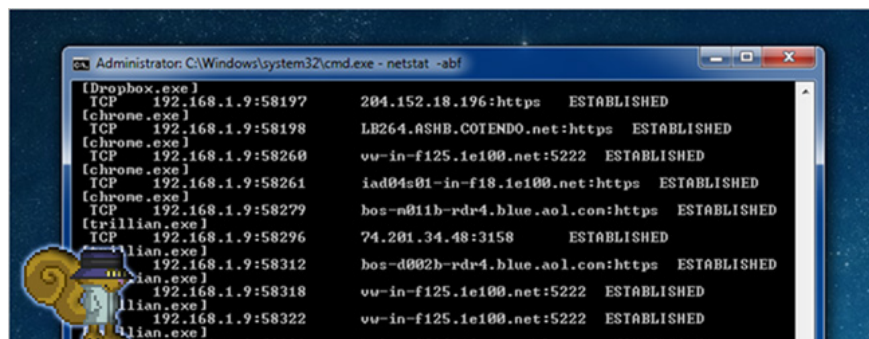


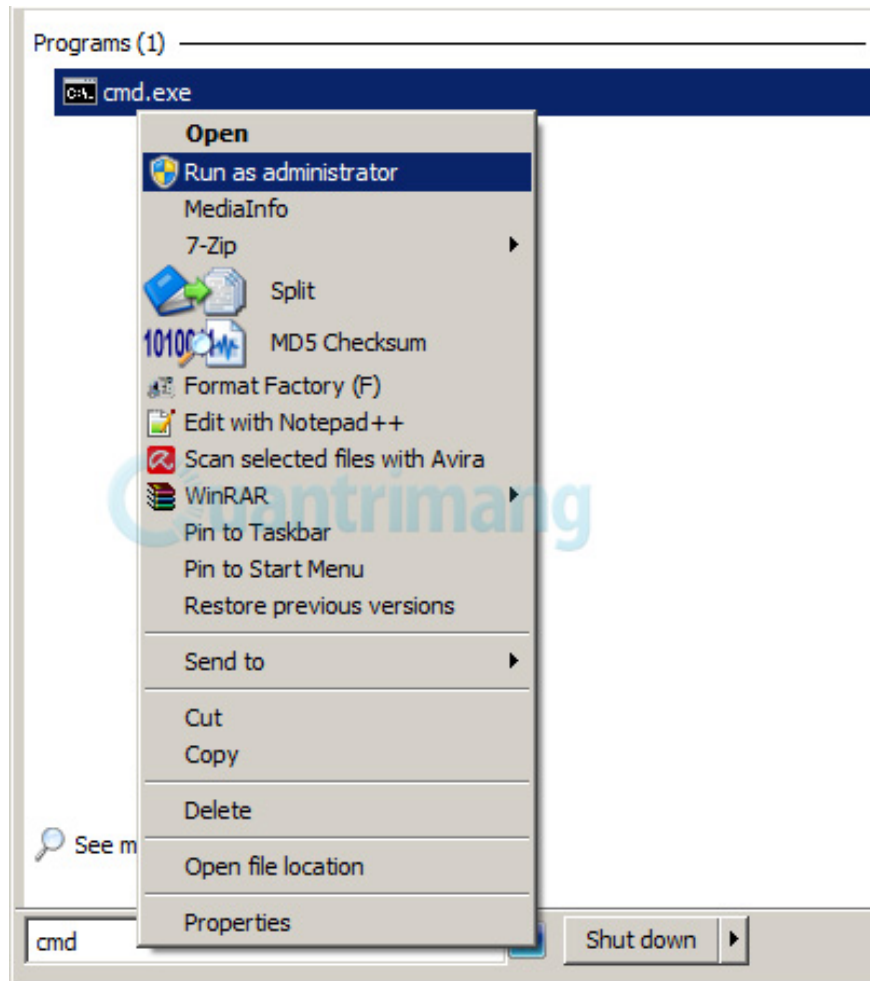
# Check that the port port is open, the connection is being made in the system

Some basic steps to check which ports are open, connections being made to help you make sure what is happening with your Internet speed.

**TipsMake.com - When your computer's Internet connection speed becomes unusually slow, how do you check what is happening in your system? It may be due to congestion or slow transmission from the provider - ISP, or your computer is infected with viruses, malware . In the article below, we will introduce to You have a few basic steps to check which ports are open and the connections being made to help you make sure what is happening with your Internet speed.**

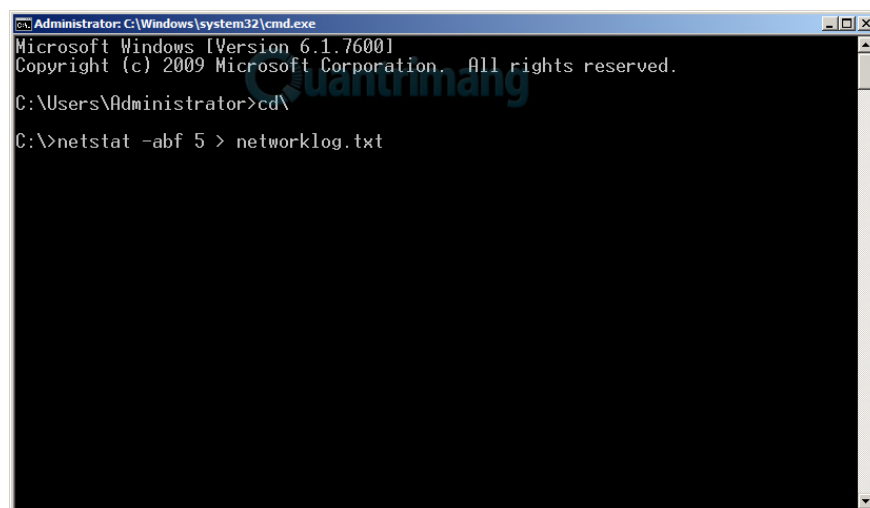


In fact, one of the simplest and easiest ways to do this is by using the *netstat* command in the **Command Prompt**, and this can be applied to **Windows XP** (at least **SP2**), **Vista** or **7** . Specifically, we will use **netstat** to create a list containing all the information generated from the computer connected to the Internet in a certain time period. First, select **Start Menu**, type **cmd** and open as **Administrator** :



If the system displays the User Account Control window, click the **Yes** button to continue. Then, type the following command at the **Command Prompt** window :

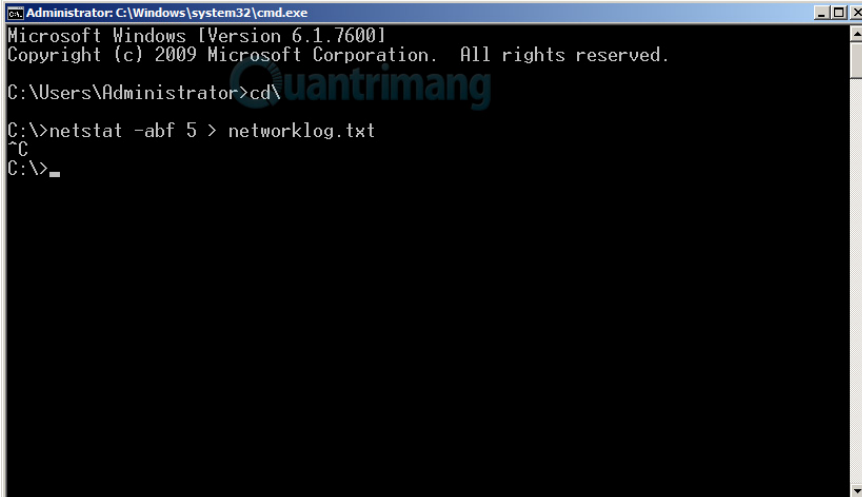
```
netstat -abf 5 > networklog.txt
```



The **-a** parameter displays all active connections and ports, **-b** indicates which applications are making the connection, and **-f** will display the **DNS** name for each option to the user. It is easier to understand what

connection is being created. Besides the **-n** parameter if you only need to display the IP address. Specifically, 5 options will be executed each time within 5 seconds for the tracking process to be more specific, all information collected will be made into networklog.txt file.

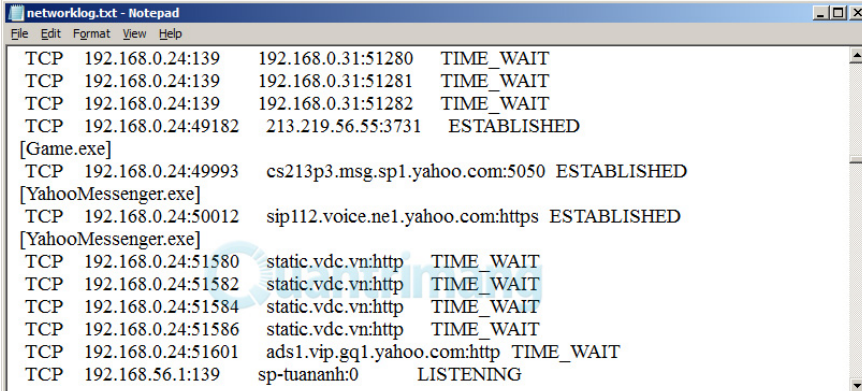
Wait about 2 minutes, then press **Ctrl + C** to stop this:



```
Administrator: C:\Windows\system32\cmd.exe
Microsoft Windows [Version 6.1.7600]
Copyright (c) 2009 Microsoft Corporation. All rights reserved.

C:\Users\Administrator>cd\
C:\>netstat -abf 5 > networklog.txt
^C
C:\>_
```

When finished, just open the **networklog.txt** file at the above path to check the information: C:\Windows\System32\networklog.txt

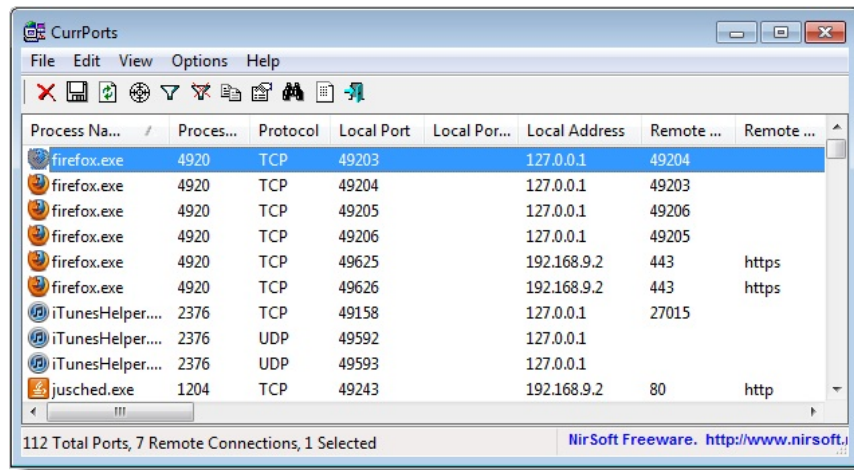


```
networklog.txt - Notepad
File Edit Format View Help
TCP 192.168.0.24:139 192.168.0.31:51280 TIME_WAIT
TCP 192.168.0.24:139 192.168.0.31:51281 TIME_WAIT
TCP 192.168.0.24:139 192.168.0.31:51282 TIME_WAIT
TCP 192.168.0.24:49182 213.219.56.55:3731 ESTABLISHED
[Game.exe]
TCP 192.168.0.24:49993 cs213p3.msg.sp1.yahoo.com:5050 ESTABLISHED
[YahooMessenger.exe]
TCP 192.168.0.24:50012 sip112.voice.ne1.yahoo.com:https ESTABLISHED
[YahooMessenger.exe]
TCP 192.168.0.24:51580 static.vdc.vn:http TIME_WAIT
TCP 192.168.0.24:51582 static.vdc.vn:http TIME_WAIT
TCP 192.168.0.24:51584 static.vdc.vn:http TIME_WAIT
TCP 192.168.0.24:51586 static.vdc.vn:http TIME_WAIT
TCP 192.168.0.24:51601 ads1.vip.gq1.yahoo.com:http TIME_WAIT
TCP 192.168.56.1:139 sp-tuananh:0 LISTENING
```

Here, you can see all the processes and applications in the system, including the browser, games, IM client, email client . making connections to the Internet in about 2 minutes.

## Use CurrPorts :

In addition, you can consult and use a free support tool - CurrPorts, with the main function of displaying all **TCP / IP** and **UDP** ports on your computer. When **CurrPorts** displays each port in the list, we can know all the relevant information and data by copying to the clipboard or saving it to a regular **HTML** file, **XML** file or text file. In addition, the program also supports the rearrangement of categories to display the columns of information according to the users' wishes:



**CurrPorts** can work with many **Windows** operating system **platforms** like **NT, 2000, XP, Server 2003, Server 2008, Vista, and Windows 7.**

You finished reading the article "**Check that the port port is open, the connection is being made in the system**" edited by the [TipsMake](#) team. We hope this article has provided you with many useful tech tips and tricks. You can search for similar articles on tips and guides. Thank you for reading and for following us regularly.