

# Check if your computer supports running PC games

You own a laptop with a weak graphics hard drive or an old PC, it is important before deciding to spend a large amount of money on upgrading your computer, check that your computer can support the game. Play it or not.

PC games are not as simple as control games. So, if you own a laptop with a weak graphics hard drive or an old PC, it is important before deciding to spend a large amount of money on upgrading the machine, check your computer can support that game or not.

Gamers do not necessarily need to upgrade their hard drive regularly. Even an old gaming PC can run the latest games well. Laptops are not manufactured for gaming, but older PCs are different.

## Intel graphics

First, there's an important warning: if your computer has Intel's onboard graphics instead of NVIDIA or AMD graphics hardware, you'll encounter problems when running new games that require graphics. .

Almost all laptops integrate Intel's onboard graphics at low and weak prices. However, even the latest Intel graphics hardware is much slower than NVIDIA or AMD graphics. If only Intel graphics are available, you cannot play the latest games on the lowest graphic settings.

Intel's onboard graphics performance has improved with its new Haswell graphics, but it hasn't changed much. All Haswell chips are extremely expensive but only bring moderate improvements compared to the previous generation.



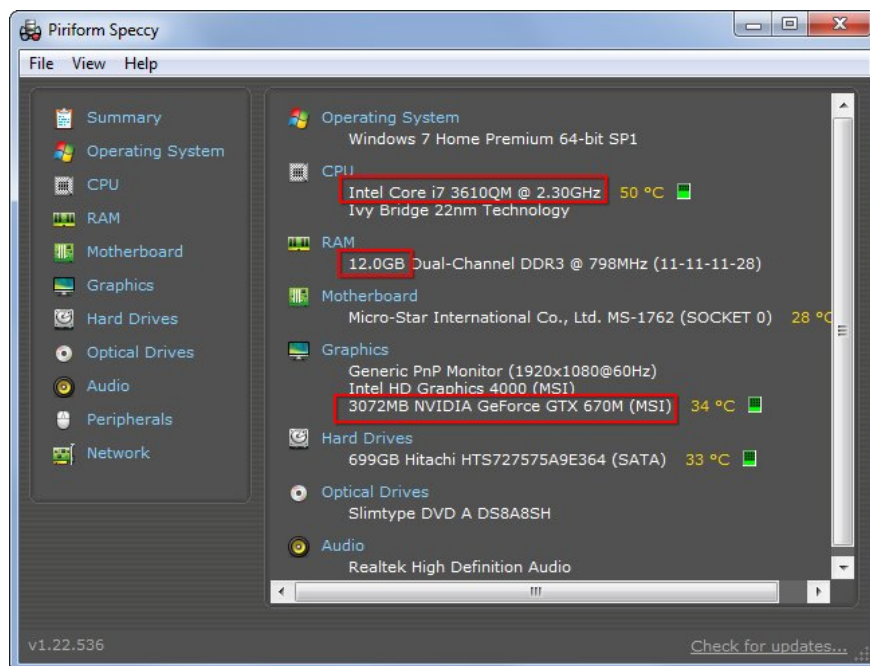
## Check the specifications of the computer manually

We will also mention an automated testing method but first we will consider manual methods. You will need to know the hardware in your computer, mainly the CPU speed, the amount of RAM and its graphics card details. You can also find this information in a variety of ways, such as looking up your manual computer specs online.

However, the easiest way is to use system tools. You should use Speccy produced by the same company with CCleaner.

Here are three things you need to know:

1. CPU speed is calculated in GHz. Click on **Speccy's CPU** to see how many cores are in your CPU.
2. The amount of **RAM** is calculated in GB.
3. The computer's graphics card and the amount of graphics RAM on board. Note, see if your computer has NVIDIA or AMD graphics. If you see Intel and both NVIDIA or AMD are good signs. When computers with both graphics can switch back and forth to save energy.



Next, look at the requirements of the game you want to run. Usually you will find this information on the game website or on the site selling this product.

Compare Speccy information and details below. Pay attention to the processor, memory and video card requirements.

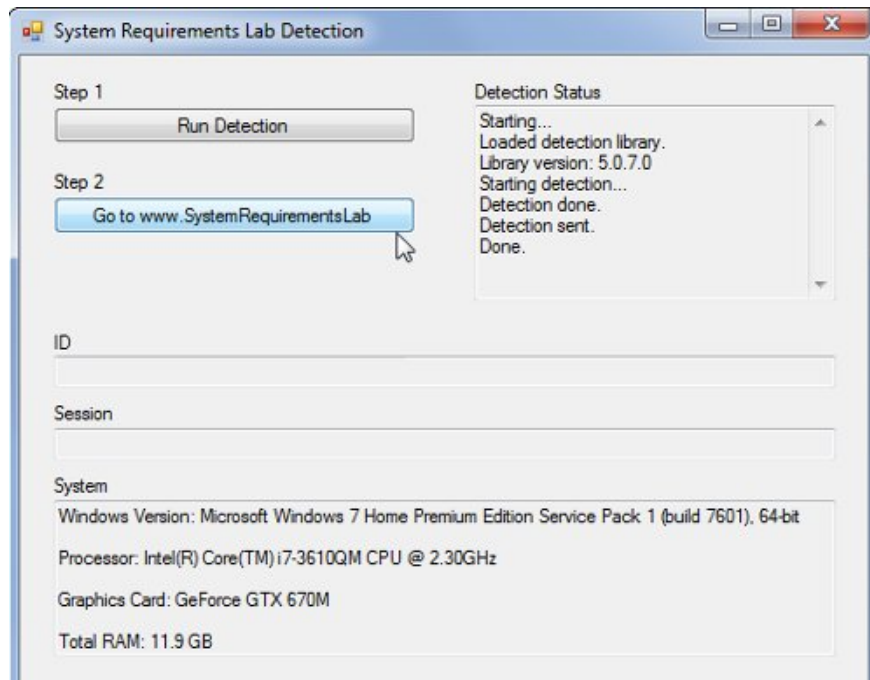
System Requirements	
Minimum:	Recommended:
OS: Windows 7/Vista/XP PC (32 or 64 bit)	Processor: Quad-core Intel or AMD CPU
Processor: Dual Core 2.0GHz or equivalent processor	Memory: 4GB System RAM
Memory: 2GB System RAM	Video Card: DirectX 9.0c compatible NVIDIA or AMD ATI video card with 1GB of RAM (Nvidia GeForce GTX 260 or higher; ATI Radeon 4890 or higher)
Hard Disk Space: 6GB free HDD Space	
Video Card: DirectX 9.0c compliant video card with 512 MB of RAM	
Sound: DirectX compatible sound card	

# Automatically compare PC specifications with games

Honestly, the above method is not convenient. Computers can do it all for us.

To automatically check the system requirements, use Can You Run It? Website This site is endorsed by a series of large companies, including AMD.


Before using this site, we recommend that you run the System Requirements Lab Detection application. Install this application and it will scan your computer hardware before moving back to the site, setting up special cookies to determine your hardware. This way, you will not have to install any Java or ActiveX applet.




After starting this tool, visit the website and select the game you want to run in the drop down box, click **Can You Run It** .






You will receive notice how the game will run on your current hardware. In the future you can test more games but if you delete cookies, you will have to run the detection tool again.

 **Video Card**  
**Minimum:** DirectX 11 graphics card with 1Gb Video RAM  
(Geforce GTS 450/Radeon HD 5770)  
**You Have: GeForce GTX 670M**

 [Click here for the latest Video Card drivers.](#)

**Features:** Minimum attributes of your Video Card

	<b>Required</b>	<b>You Have</b>
 Pixel Shader version	5.0	<b>5.0</b>
 Vertex Shader version	5.0	<b>5.0</b>
 Dedicated Video RAM	1 GB	<b>3.0 GB</b>

In addition, you can refer to this article:

1. The necessary notes when buying a gaming laptop

You finished reading the article "**Check if your computer supports running PC games**" edited by the [TipsMake](#) team. We hope this article has provided you with many useful tech tips and tricks. You can search for similar articles on tips and guides. Thank you for reading and for following us regularly.