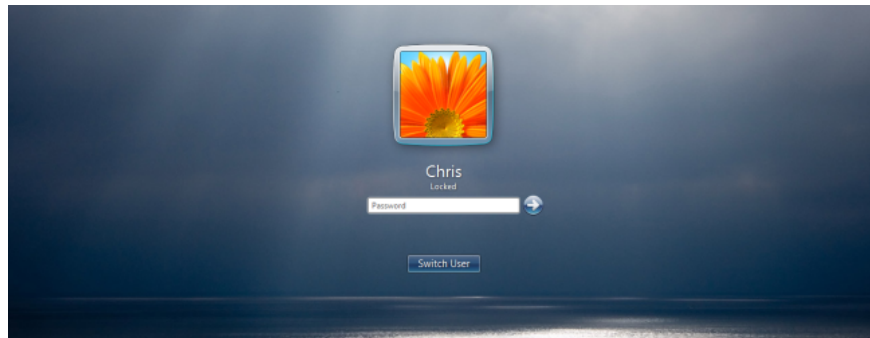


Change the Windows 7 and 10 Logon screen backgrounds

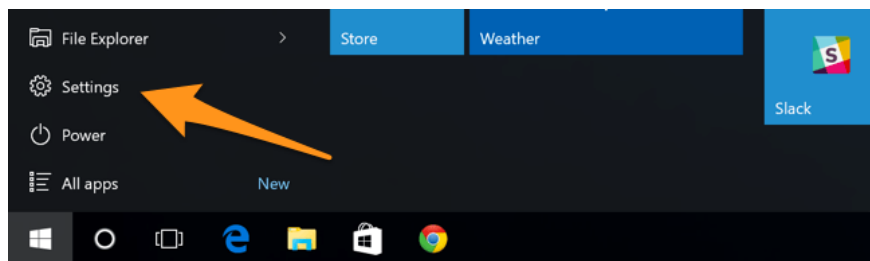
Windows allows users to easily change the theme, interface, and Logon desktop on Windows 7, 8 and 10 without having to install any 3rd party applications.

Windows allows users to easily change the theme, interface, and Logon desktop on Windows 7, 8 and 10 without having to install any 3rd party applications. Sometimes changing the desktop background or font and display font size is quite important and necessary for some people.

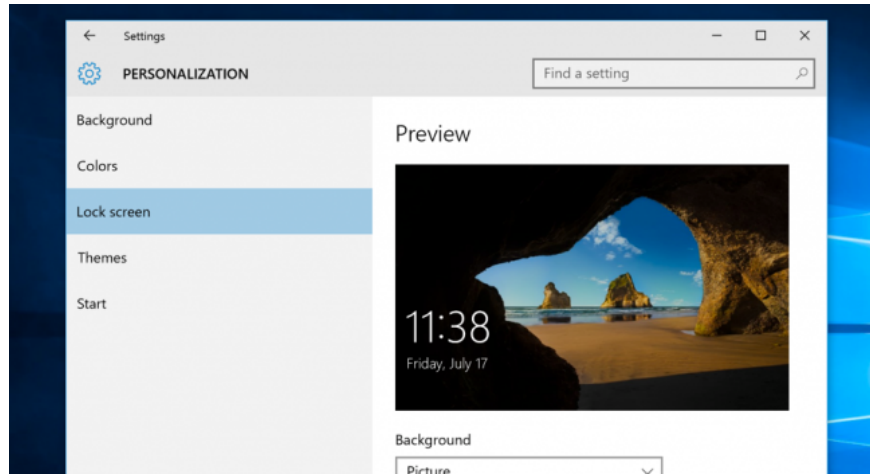
In the following article, Network Administrator will show you how to change the Windows 7 and 10 Logon screens.



1. Set custom Logon Windows 8 or 10 screen background



On Windows 8 and Windows 10, the process of customizing the Logon screen background is quite simple and easy. All you need to do is open **PC Settings** and then select **Personalization** and then select **Lock Screen**.



With Windows 8, you can open Settings on Start Screen or Charms.

With Windows 10, you can open Settings on the Start Menu.

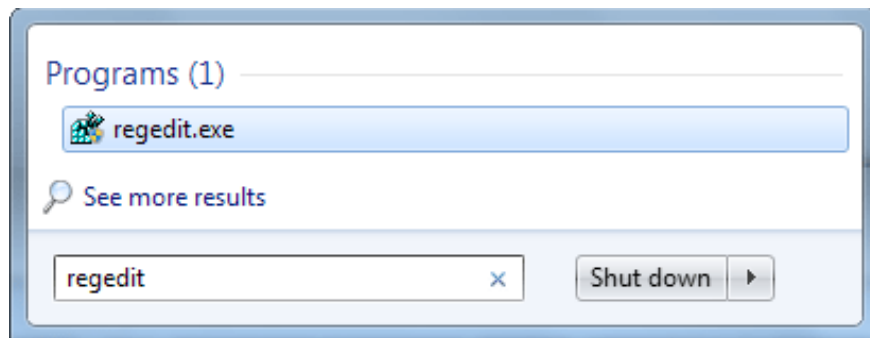
2. Enable to customize the Logon Windows 7 screen background

By default Logon desktop customization feature on Windows 7 is disabled, so you must enable this feature from Registry Editor.

If you use Windows 7 Professional version, you can use Group Policy Editor to enable this feature.

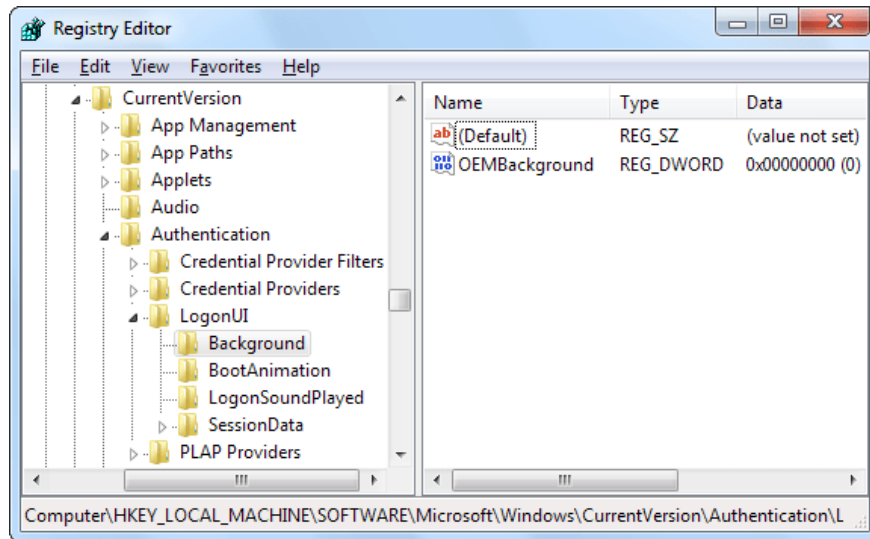
On the Registry Editor:

First, open the Start Menu, then on the search box, type the keyword **regedit** and press Enter to open the Registry Editor.



On the Registry Editor, navigate to the key:

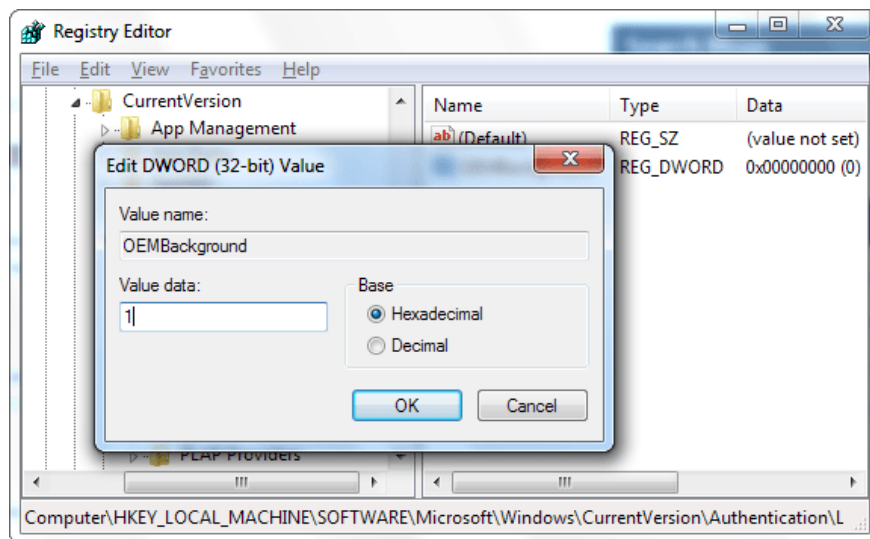
HKEY_LOCAL_MACHINE\SOFTWARE\Microsoft\Windows\CurrentVersion\Authentication\LogonUI\Background



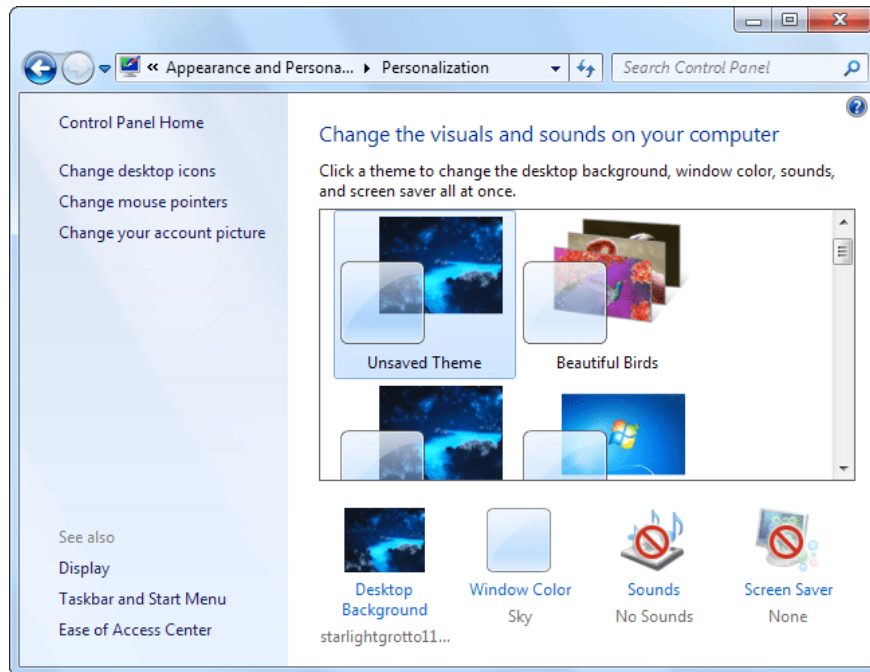
Now you will see the **DWORD** value of **OEMBackground** in the right pane.

If this value is not found, right-click on the right pane to create a new **DWORD** value named **OEMBackground**.

Double click on **OEMBackground** and set the value to **1**.



Note:



If you select a new theme in Appearance and Personalization window, "unset" this registry value.

Selecting a new theme will change the value of the key stored in the .ini theme file set to 0.

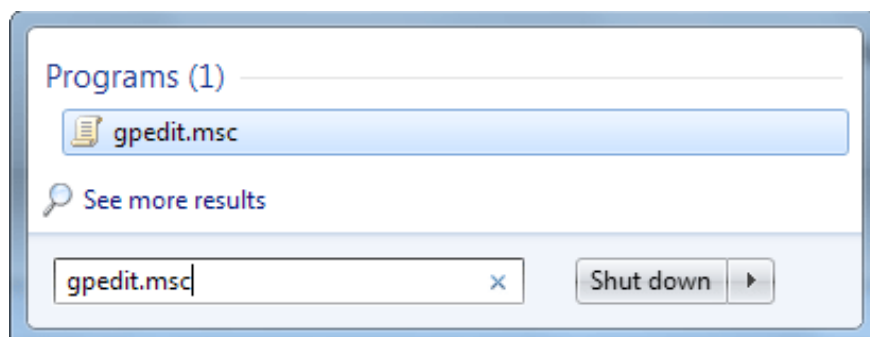
If you change the theme, you will have to customize the Registry again.

On the Group Policy Editor:

Setting up on Group Policy, when you change the theme, you will not have to re-enable the same steps as in the Registry Editor.

However, the drawback is that Group Policy Editor is only available on Windows Professional version.

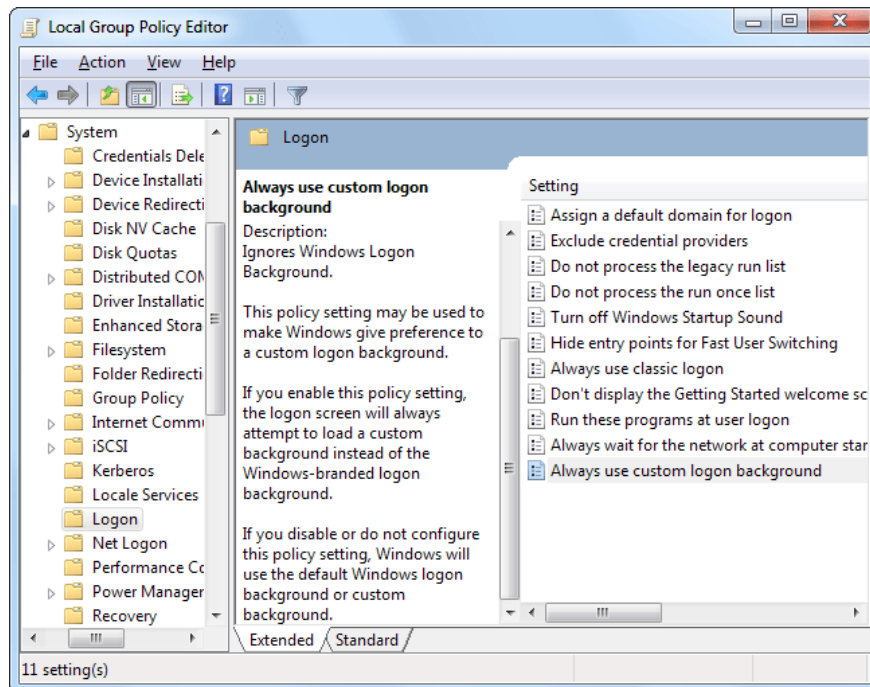
First on the Start Menu, type the keyword **gpedit.msc** to access the Group Policy Editor.



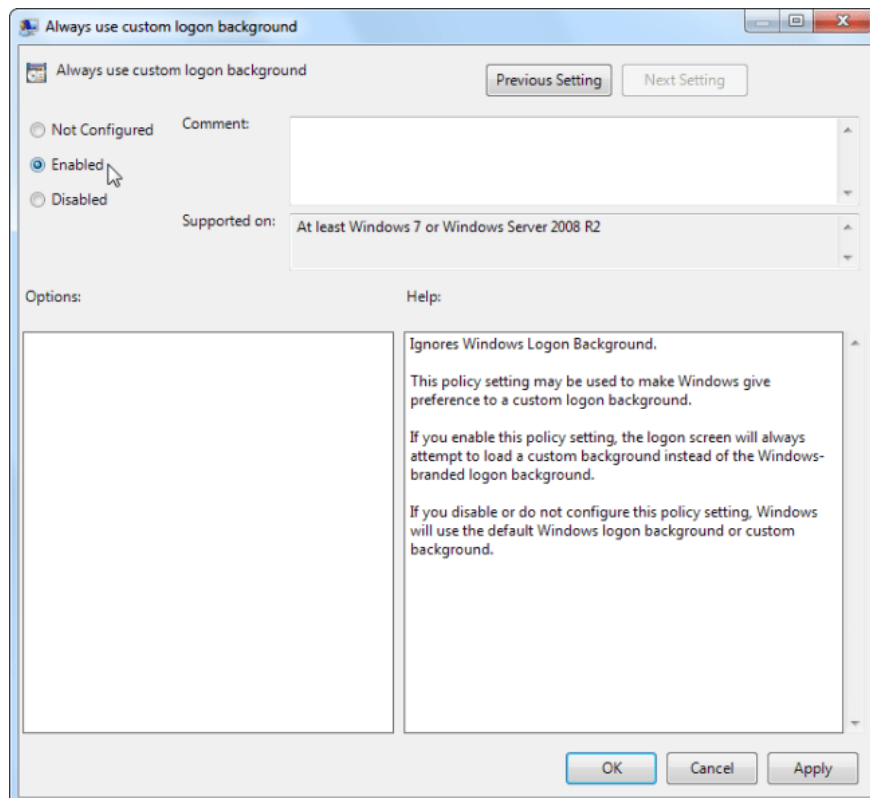
On the Group Policy Editor window, navigate to the following link:

Computer Configuration Administrative TemplatesSystemLogon

Here you find the installation **Always use custom logon background** in the right pane.



Double click on the option and set it to **Enabled**.



3. Set image

Your image file is smaller than 256 KB.

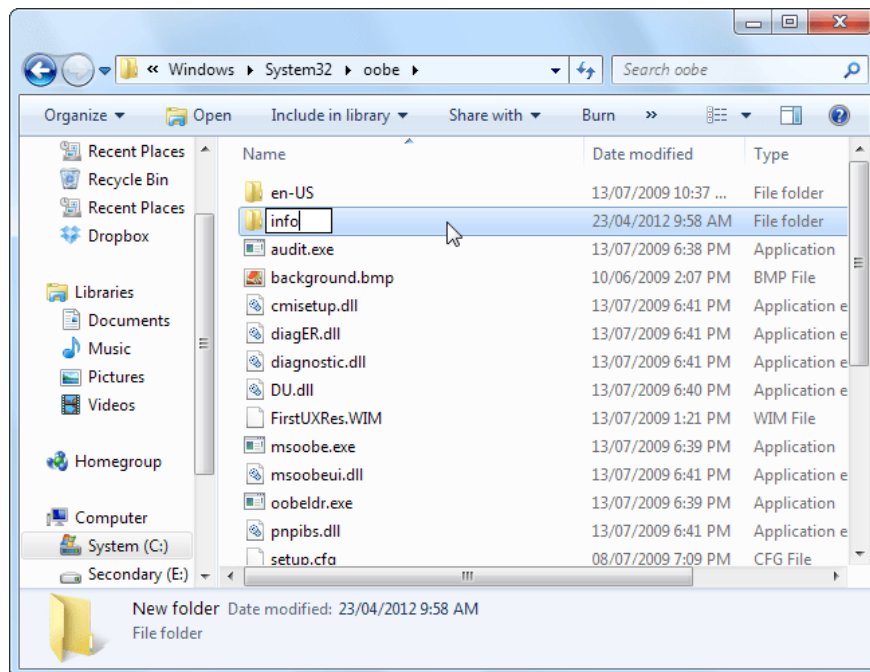
Search customized Logon screen background image by following the link below:

C: WindowsSystem32oobeinfo

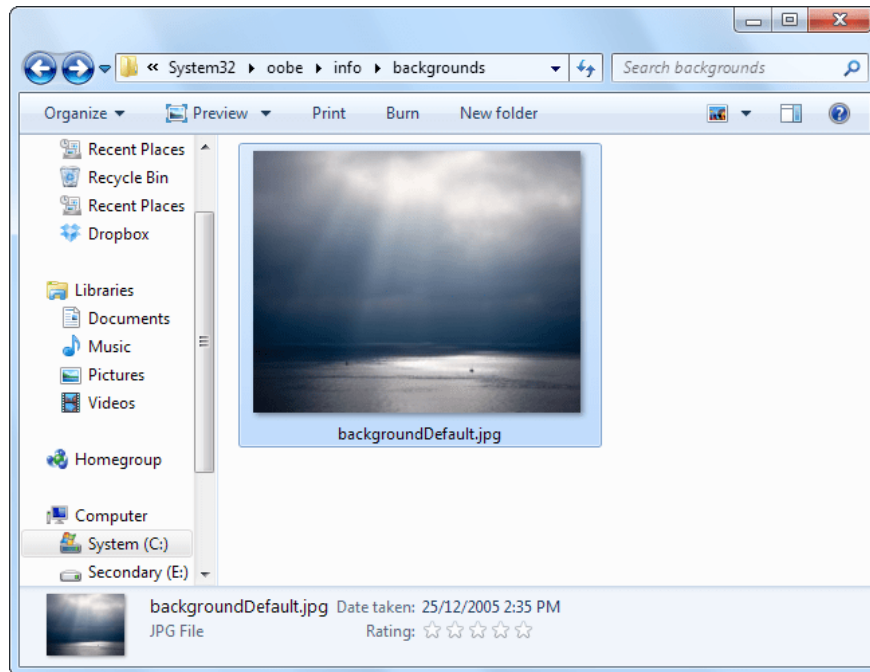
By default the info and background folder does not exist. Therefore you must create an info folder

You navigate along the path:

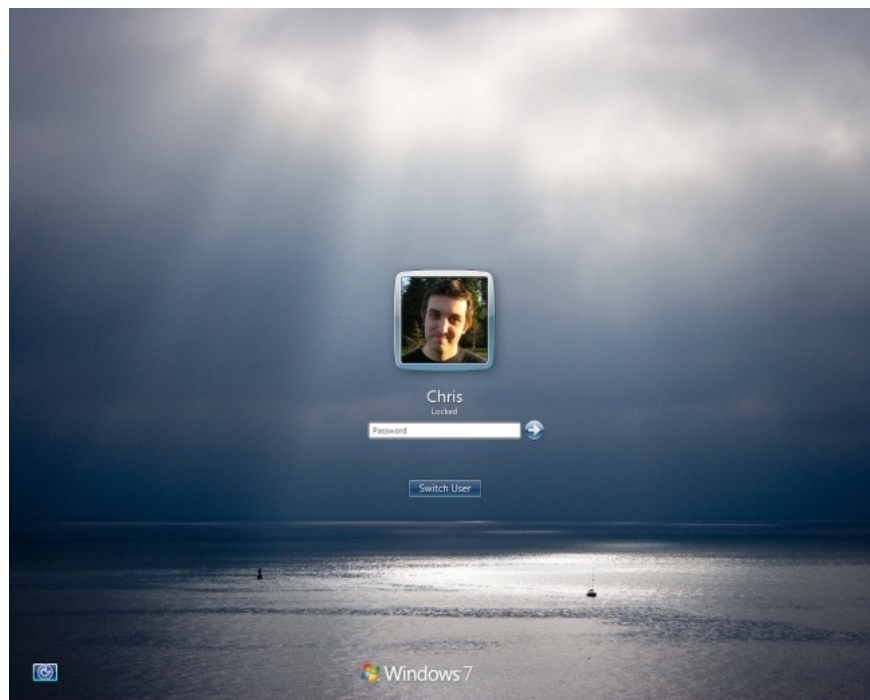
C: WindowsSystem32oobe folder and create a new folder named the folder info by right-clicking on the **oobe** folder, selecting **New => New folder** .



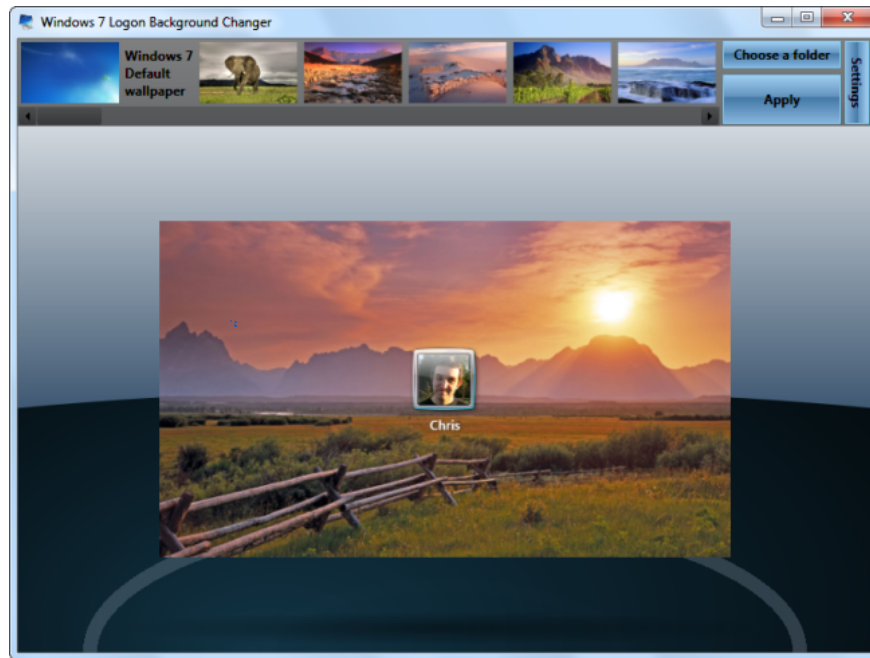
Copy the image as the wallpaper to the background folder and rename it **backgroundDefault.jpg**.



Finally, log out or lock screen (press Windows + L key combination), on the screen you will see the new background.



4. Using the 3rd tool (Windows 7 only)



If you don't want to manipulate it manually, you can ask for the help of a third tool, such as Windows Logon Background Changer.

This software is completely easy to use, requires no installation, and it even has a built-in tool to automatically edit the size and size of images without affecting the original image.

Refer to some of the following articles:

1. **Trick to speed up Start Menu on Windows 10**
2. **How is the Cotrol Panel and the Settings menu on Windows 10 different?**
3. **Instructions to turn off ads on the Screen Lock screen Windows 10**

Good luck!

You finished reading the article "**Change the Windows 7 and 10 Logon screen backgrounds**" edited by the [TipsMake](#) team. We hope this article has provided you with many useful tech tips and tricks. You can search for similar articles on tips and guides. Thank you for reading and for following us regularly.