

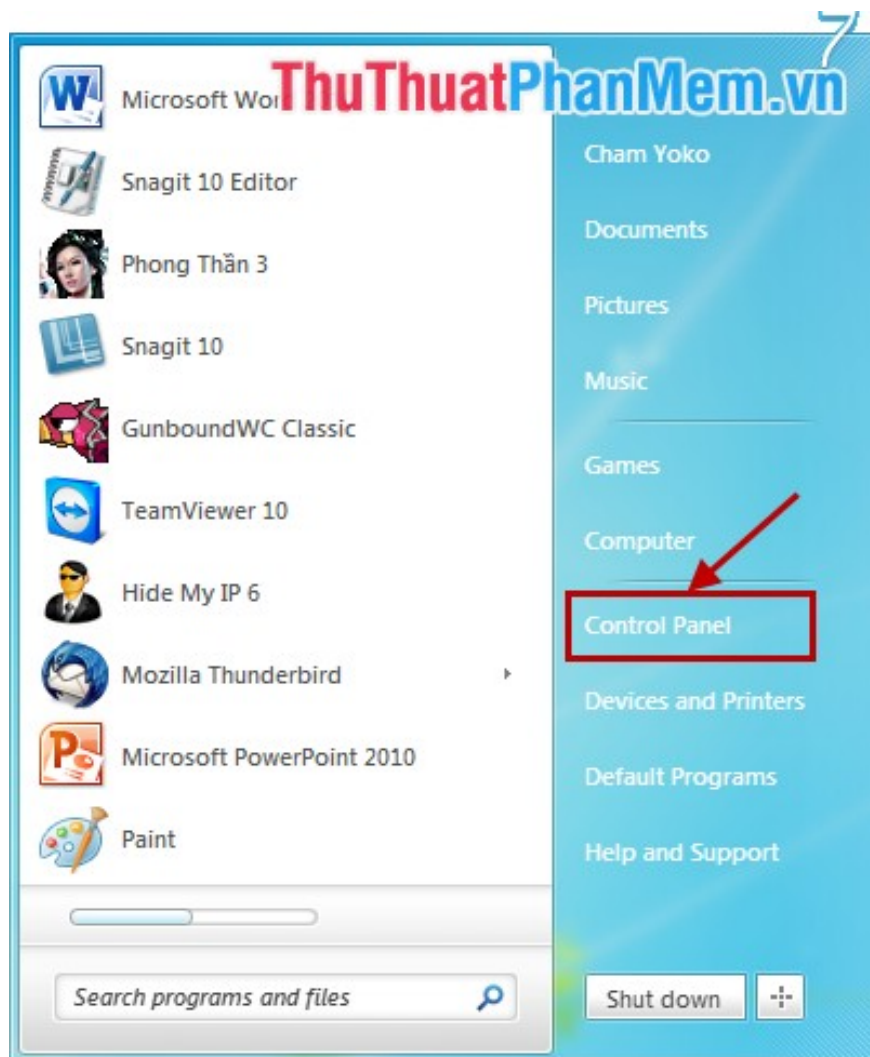
Change the setting mode when you press the Power button on the computer

Usually when you press the power button, the computer will go to sleep or turn off. However, you can change the mode so that when you press the Power button, the computer will switch the mode as you desire.

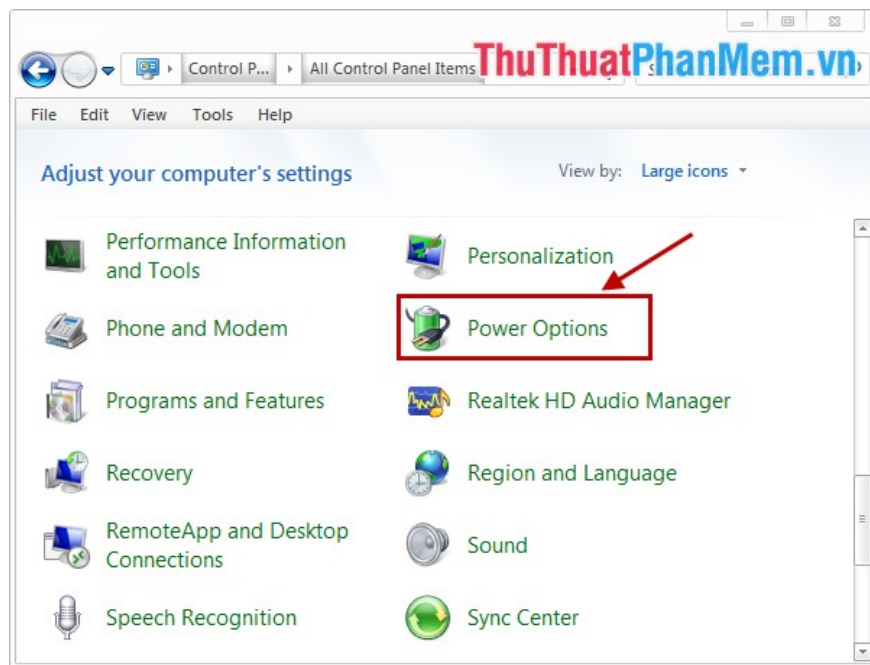
Usually when you press the power button, the computer will go to sleep or turn off. However, you can change the mode so that when you press the Power button, the computer will switch the mode as you desire.

To accomplish this, you refer to the article below. The article shows how to change the mode that is set when pressing the Power button on the computer.

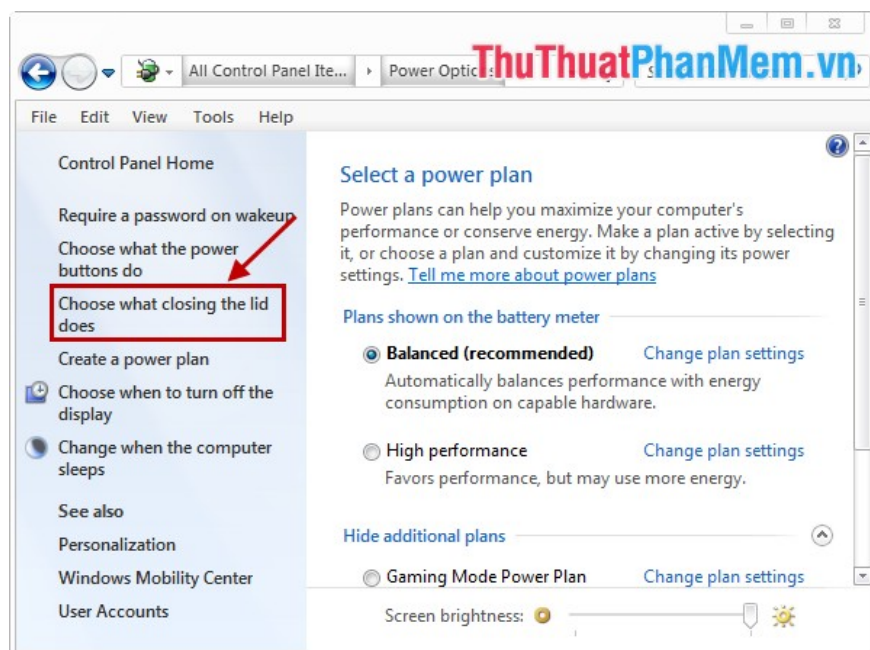
Step 1: Select **Start -> Control Panel** to open the **Control Panel** .



Step 2: In the **View** by you select **Large icons** then you select **Power Options** .



Step 3: In the **Power Options** window, select **Choose what closing the lid does** on the left.



Step 4: In the **System Settings** window in the mode press the Power button (When I press the power button).

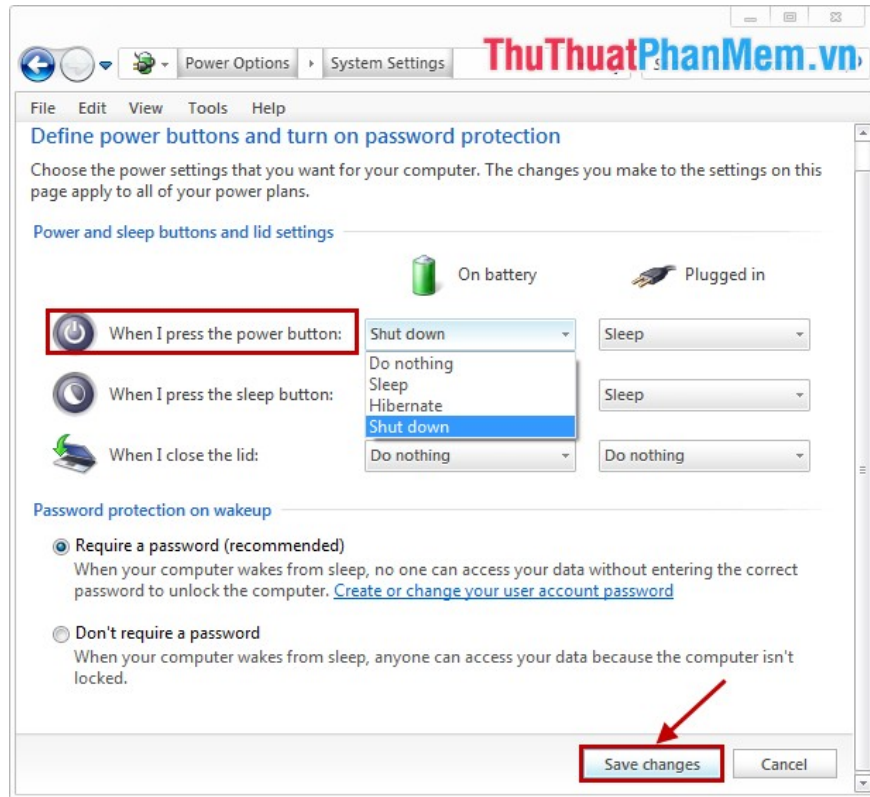
You choose other options as you like, there are 4 options:

- **Do nothing:** No use.
- **Sleep:** Turn off the screen.
- **Hibernate:** Hibernation .

- Shut down: Shut down .

If the computer uses a battery, then you choose the **On battery** side , use the battery charger, then you choose the side **Plugged in** .

After selecting the mode when the Power button is pressed, click **Save changes** to change the settings.



So you changed the mode is set when pressing the Power button on the computer. Good luck!

You finished reading the article "**Change the setting mode when you press the Power button on the computer**" edited by the [TipsMake](#) team. We hope this article has provided you with many useful tech tips and tricks. You can search for similar articles on tips and guides. Thank you for reading and for following us regularly.