

Change the forgotten password on Windows 8

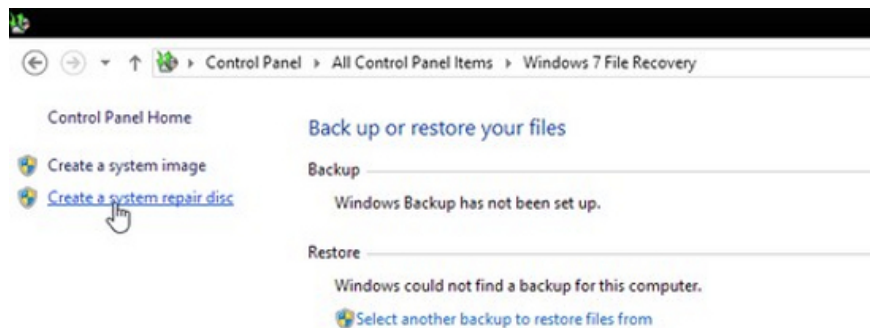
If you are a user with administrator rights on your computer and unfortunately you forgot your password, your computer will be locked. If that happens, in the usual way you will have to reinstall the system or restore the password using some third-party tools.

If you are a user with administrator rights on your computer and unfortunately you forgot your password, your computer will be locked. If that happens, in the usual way you will have to reinstall the system or restore the password using some third-party tools.

But the following way will help you recover the forgotten password for your account without using other tools.

First, you need to create a system repair disk from a Windows 8 computer that you can access. Windows repair disks can be created on a CD / DVD or even a USB drive because almost all computers are currently able to boot via USB drives.

To do so, insert a blank CD / DVD or USB drive into a Windows 8 computer. Then go to **Control Panel** and click the **Create a system repair disc option** on the left. Then follow the simple instructions on the screen to create your Windows 8 repair disc.



Next, insert the repaired CD / DVD or USB drive you previously created into your computer and restart the computer and select the **Troubleshoot** option in the dialog box that appears.

Choose an option



Continue

Exit and continue to Windows 8



Troubleshoot

Refresh or reset your PC, or use advanced tools

On the next screen, click on **Advanced options**.

← Troubleshoot



Refresh your PC

If your PC isn't running well, you can refresh it without losing your files



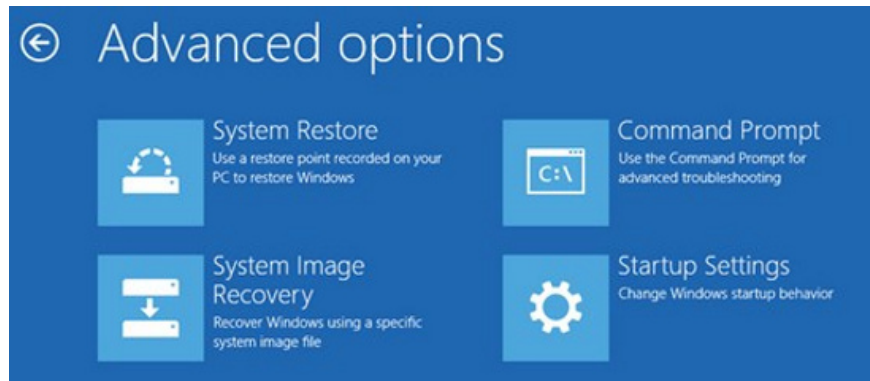
Reset your PC

If you want to remove all of your files, you can reset your PC completely



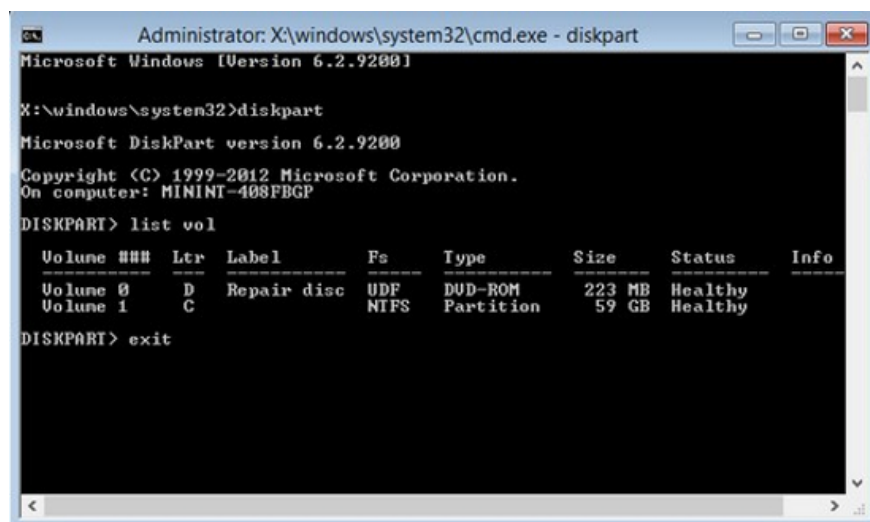
Advanced options

Now click on the **Command Prompt** option .



This will open a **Command Prompt** command line .In this window, enter the following commands:

diskpart



You will see a list of drive partitions on your system, from which you can easily find the Windows installation partition. Usually it will be a C drive, but if you install on a different partition, determine your Windows 8 installation partition correctly.

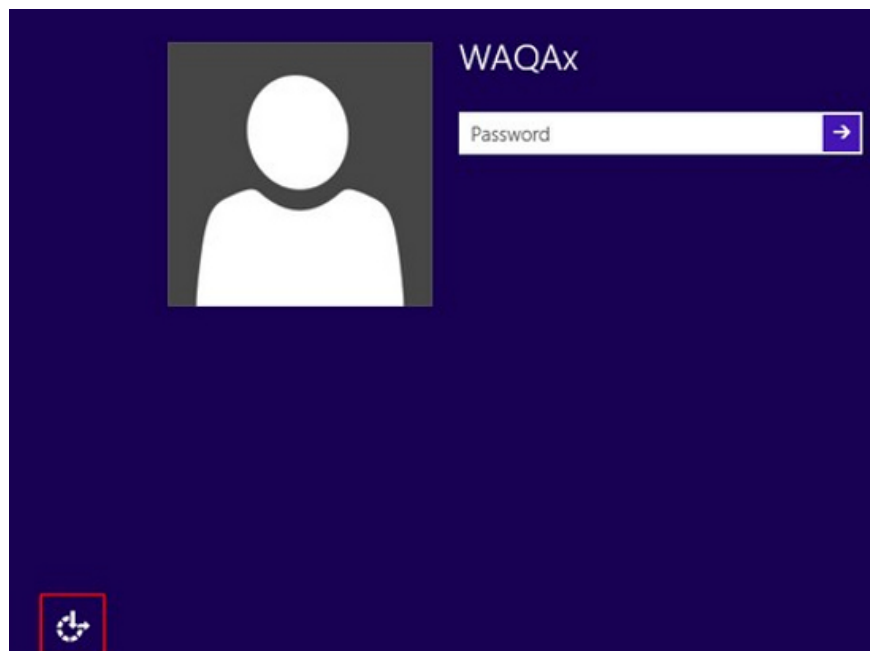
Then enter the **Exit** command to exit the **DiskPart** tool.

Next, enter the following commands (Replace drive C with the appropriate drive letter for your other Windows installation partition).

```
C:
cd windows
cd system32
copy cmd.exe cmd.exe.original
Copy Utilman.exe Utilman.exe.original
del Utilman.exe
ren cmd.exe Utilman.exe
shutdown -r -t 00
```

```
Administrator: X:\windows\system32\cmd.exe
X:\windows\system32>c:
C:\>cd windows
C:\Windows>cd system32
C:\Windows\System32>copy cmd.exe cmd.exe.original
1 file(s) copied.
C:\Windows\System32>copy Utilman.exe Utilman.exe.original
1 file(s) copied.
C:\Windows\System32>del Utilman.exe
C:\Windows\System32>ren cmd.exe Utilman.exe
C:\Windows\System32>shutdown -r -t 00_
```

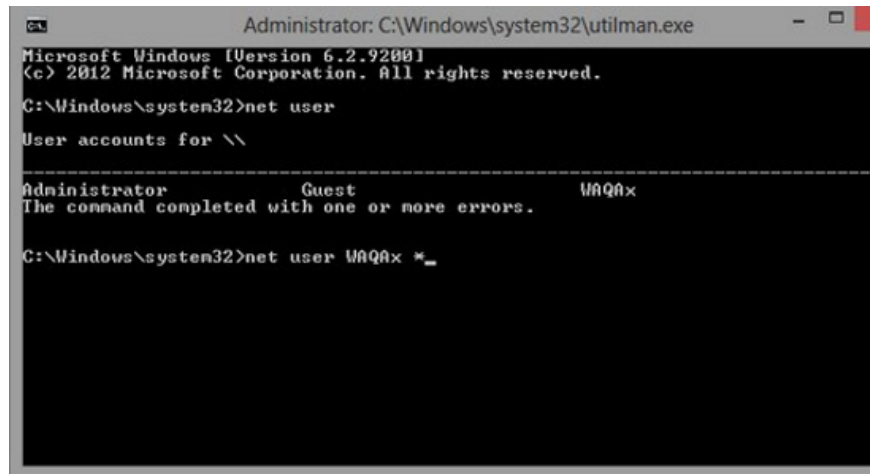
The above commands will prepare the necessary tools to reset the password and restart your computer. After booting to the login screen, click the **Ease of Access** button in the lower left corner. You will now see a **Command Prompt** window instead of the **Ease of Access** menu.



In the command line, enter the following command to list the exact names of all user accounts.

net user

Your account name will not be Administrator and Guest name, because these two accounts are the system's default. As shown in the picture below, the username is defined as WAQAx so you must specify your account name so that you can continue to take the next steps.



```
Administrator: C:\Windows\system32\utilman.exe
Microsoft Windows [Version 6.2.9200]
(c) 2012 Microsoft Corporation. All rights reserved.
C:\Windows\system32>net user

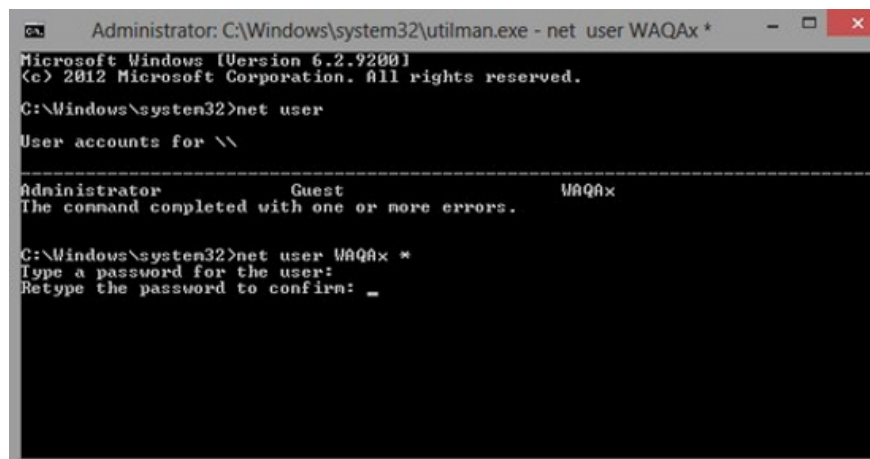
User accounts for \\

Administrator      Guest              WAQAx
The command completed with one or more errors.
C:\Windows\system32>net user WAQAx *
```

Next, enter the following command. Of course, replace the name WAQAx with the name of your user account.

*net user WAQAx **

You will now be asked to enter a new password for your account. When you type in the password, the mouse pointer will not move and no characters appear, which means you will not see the typed password. But please be assured that the password is still set, so you need to be very careful and enter twice the same and the same password.



```
Administrator: C:\Windows\system32\utilman.exe - net user WAQAx *
Microsoft Windows [Version 6.2.9200]
(c) 2012 Microsoft Corporation. All rights reserved.
C:\Windows\system32>net user

User accounts for \\

Administrator      Guest              WAQAx
The command completed with one or more errors.
C:\Windows\system32>net user WAQAx *
Type a password for the user:
Retype the password to confirm: _
```

After entering the new password for your account, enter the **Exit** command to exit the Command Prompt window:

You can now log into your computer with a new password.



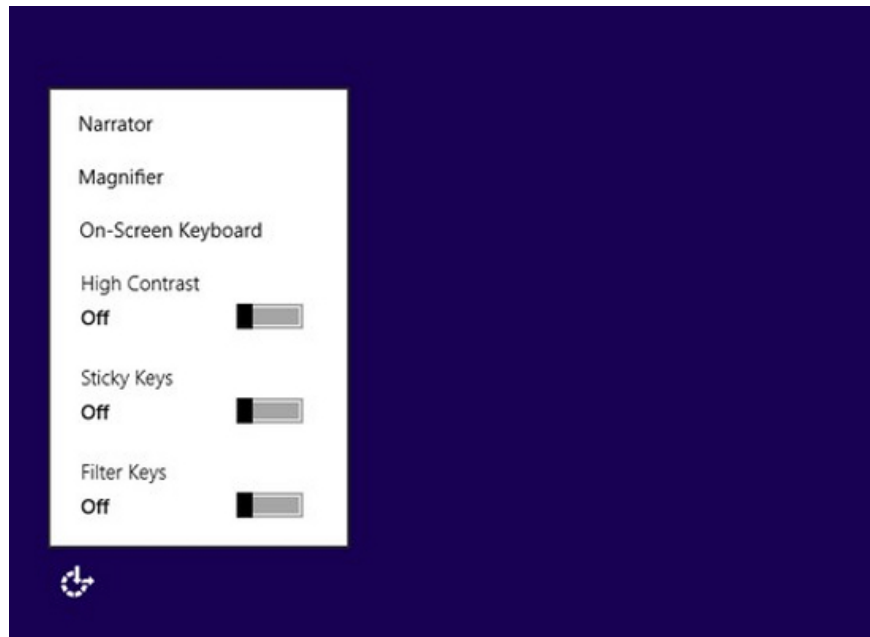
Do not disappear but you still need to restore the changes you made on the cmd.exe file and utilman.exe on the system by booting into the system again with the repair disk and activating the door. Command Prompt command line as above. Then enter the following commands, which replace the drive letter C with the drive letter of your Windows partition.

```
C:  
cd windows  
cd system32  
del Utilman.exe  
move Utilman.exe.original Utilman.exe  
ren cmd.exe.original cmd.exe  
shutdown -r -t 00
```

A screenshot of a Windows Command Prompt window titled "Administrator: X:\windows\system32\cmd.exe". The window shows the following commands and their outputs:

```
Microsoft Windows [Version 6.2.9200]  
X:\windows\system32>c:  
C:\>cd windows  
C:\Windows>cd system32  
C:\Windows\System32>del Utilman.exe  
C:\Windows\System32>ren Utilman.exe.original Utilman.exe  
C:\Windows\System32>ren cmd.exe.original cmd.exe  
C:\Windows\System32>shutdown -r -t 00
```

The above commands will restore the files according to the original settings and restart your computer normally. After restarting the computer, you will notice that the **Ease of Access** menu now in the login screen has been restored as before.



You finished reading the article "**Change the forgotten password on Windows 8**" edited by the [TipsMake](#) team. We hope this article has provided you with many useful tech tips and tricks. You can search for similar articles on tips and guides. Thank you for reading and for following us regularly.
