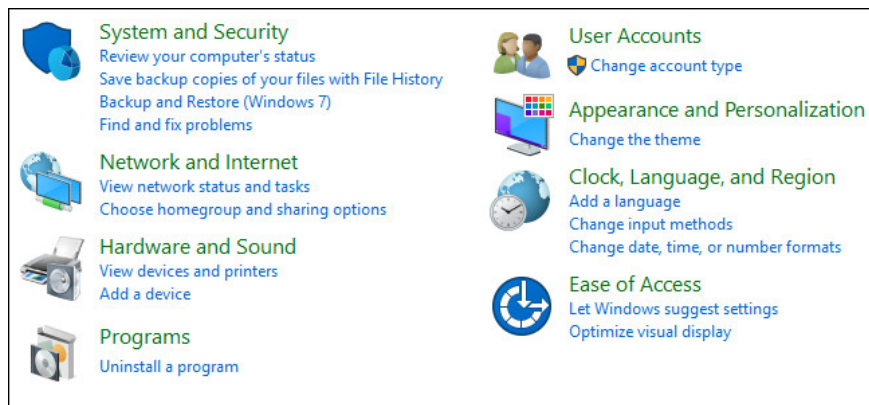


Change the default Control Panel view to a Windows computer

By default, Windows Control Panel will display the view by category: Category, Large Icons, or Small Icons. However, if you want to open the Control Panel window to display specific items fully, you can use the Registry or Group Policy to edit them.

By default, **Windows Control Panel** will display the view by category: Category, Large Icons, or Small Icons. However, if you want to open the Control Panel window to display specific items fully, you can use the Registry or Group Policy to edit them.



1. For users of Windows Home version

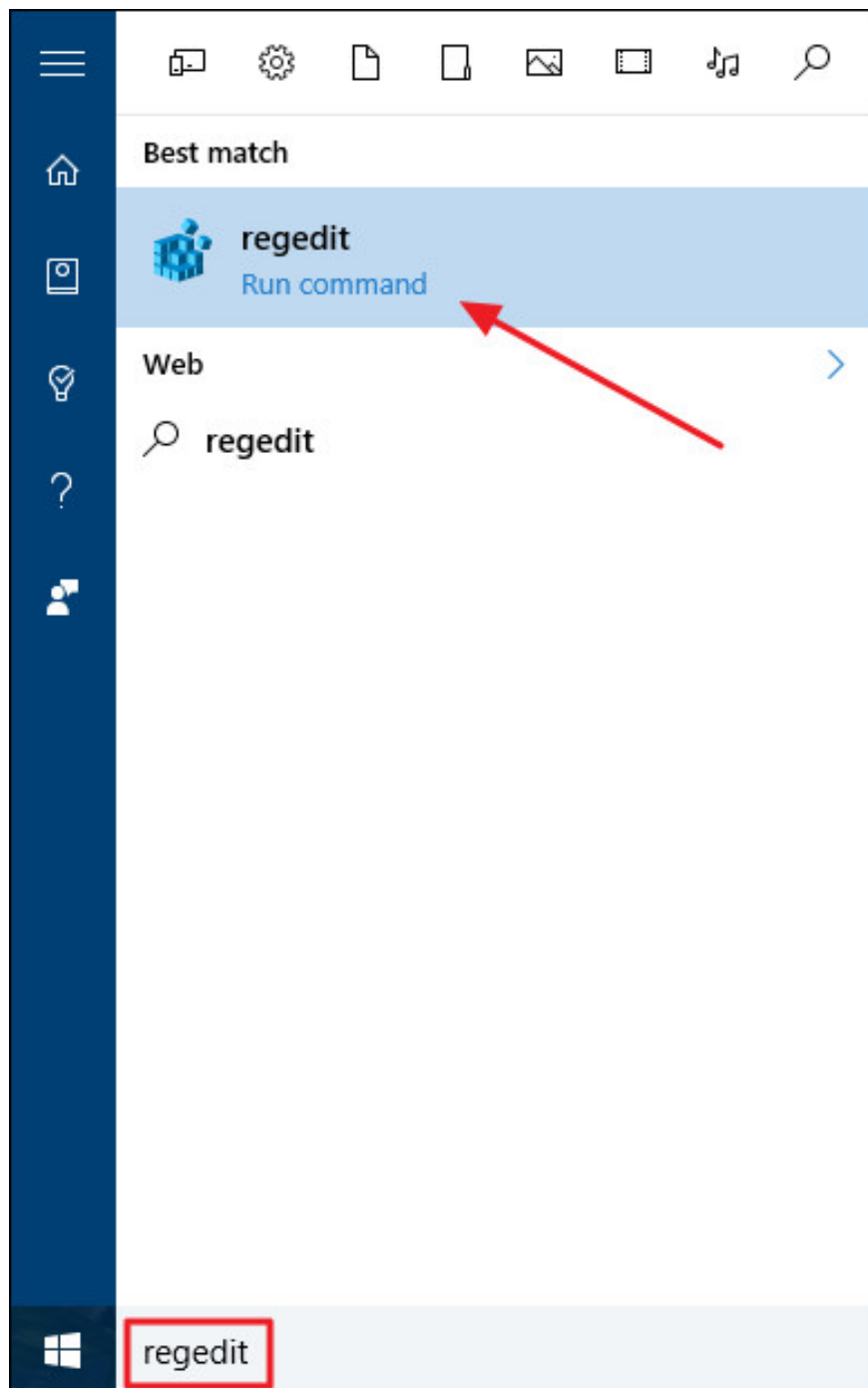
If you use the Windows Home version, you can edit the **Registry** to change the default view on the Control Panel.

If you use Windows Pro or Enterprise you can use **Local Group Policy Editor** .

Note:

Registry Editor is a powerful tool, so you should back up the Registry before doing so in case a bad situation occurs.

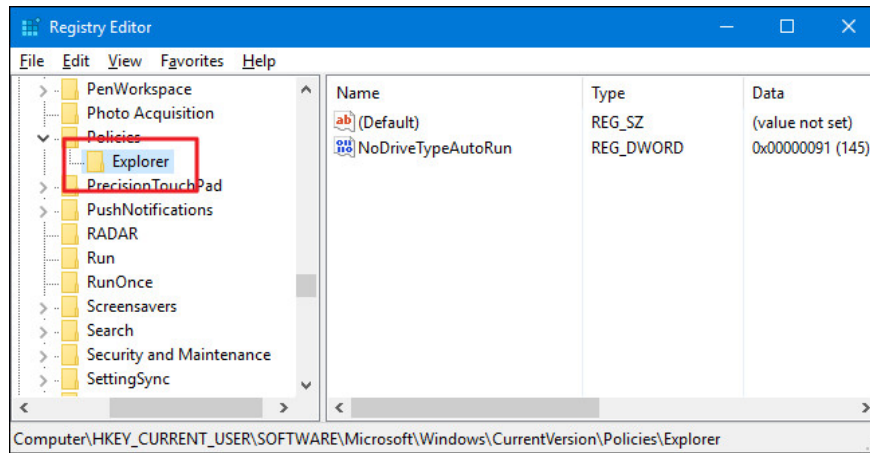
First open the Registry Editor window by clicking **Start** , then enter the keyword **regedit** in the Search box and press Enter.



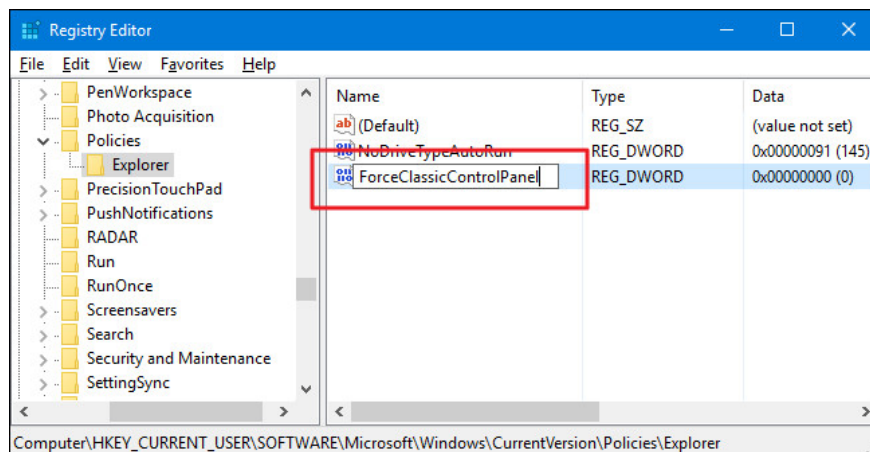
If the **UAC** window appears, click **Yes** to allow the computer to change.

On the Registry Editor window, navigate to the key:

HKEY_CURRENT_USERSOFTWAREMicrosoftWindowsCurrentVersionPoliciesExplorer



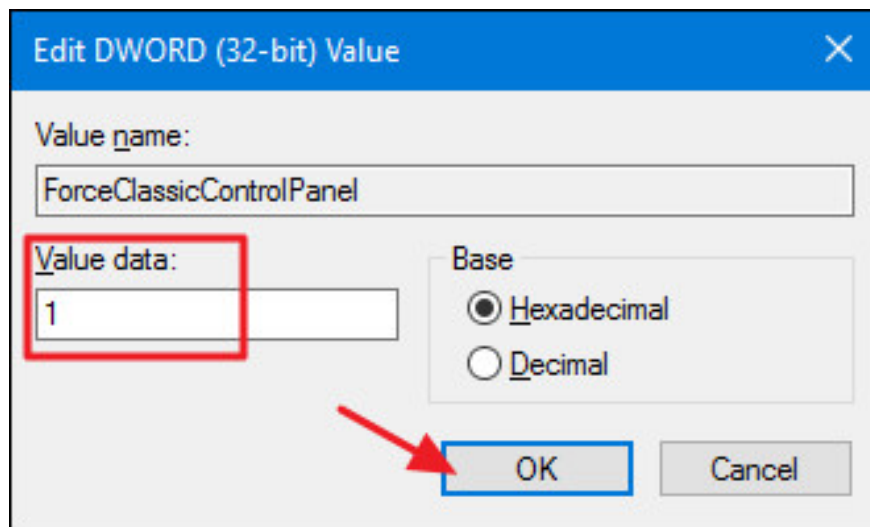
Next, proceed to create a new **value** in the key Explorer. Right-click and key **Explorer** select **New => DWORD** (32-bit) Value. Name this new value as ForceClassicControlPanel.



There are 3 ways you can use to adjust Control Panel View:

1. If value ForceClassicControlPanel does not exist, Control Panel on Windows will by default open the classification the last time you use it.
2. If value ForceClassicControlPanel is set to 0, Control Panel is always open under Category category.
3. If value ForceClassicControlPanel is set to 1, Control Panel will always open under the Icon View category, either Large or Small icon, depending on the last time you used the Control Panel.

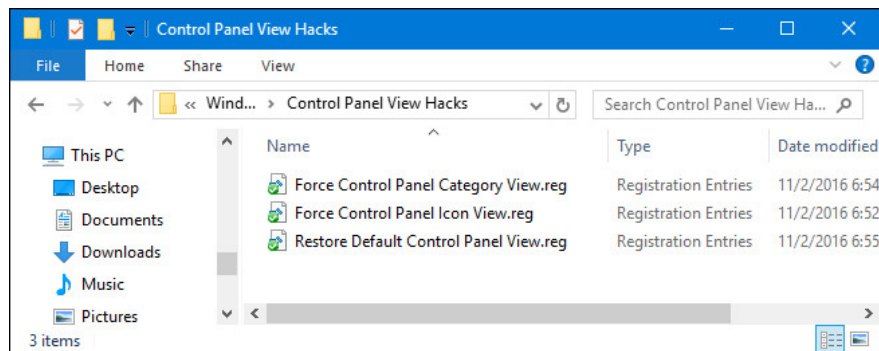
Double-click **value ForceClassicControlPanel** to open the Properties window. Here you change the value in the Value data frame from 0 to 1, depending on how you want and click **OK**.



Finally close the Registry Editor window and open the Control Panel window to check.

If you want to change back to the original default setting, you should follow the same steps and delete the value of ForceClassicControlPanel.

2. Use the built-in Registry



If you do not want to manually edit the Registry, you can use the pre-edited Registry.

Download Control Panel View Hacks here.

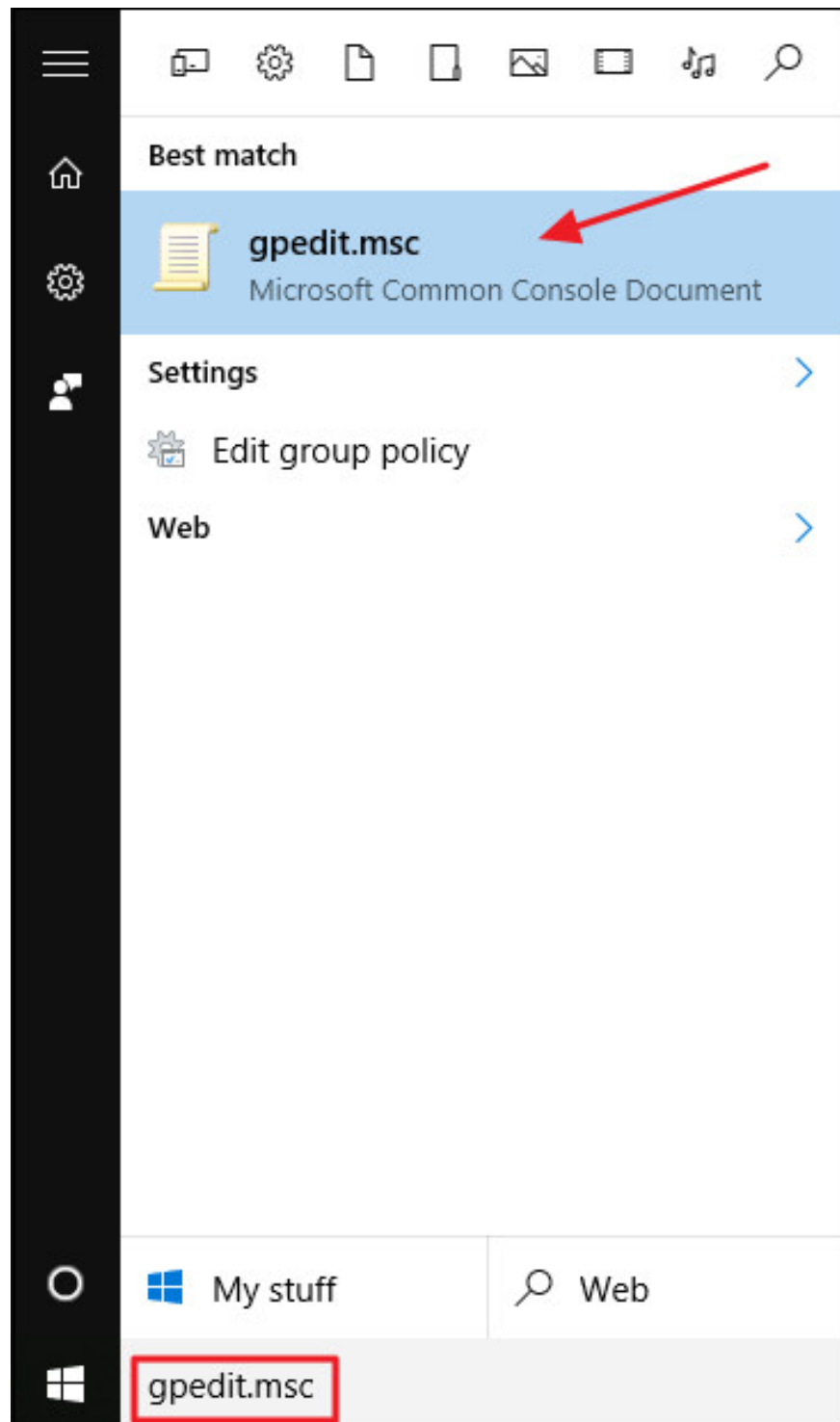
After downloading the **Zip Control Panel View Hacks file**, proceed to extract the file. Just run the **Force a view** file and set the appropriate value you want to open the Control Panel window.

Run the restore file to delete the value ForceClassicControlPanel and restore to the original default settings.

3. For Pro and Enterprise users

If using Windows Pro or Enterprise version, the fastest way to set the default view on Control Panel is to use Local Group Policy Editor.

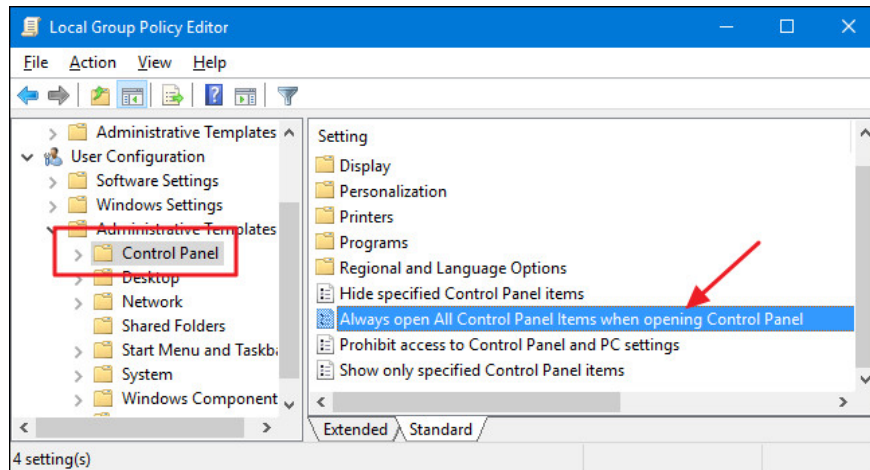
First click **Start** , then enter **gpedit.msc** into the Search box and press Enter.



On the Local Group Policy window, in the left pane, navigate to the key:

User Configuration => Administrative Templates => Control Panel

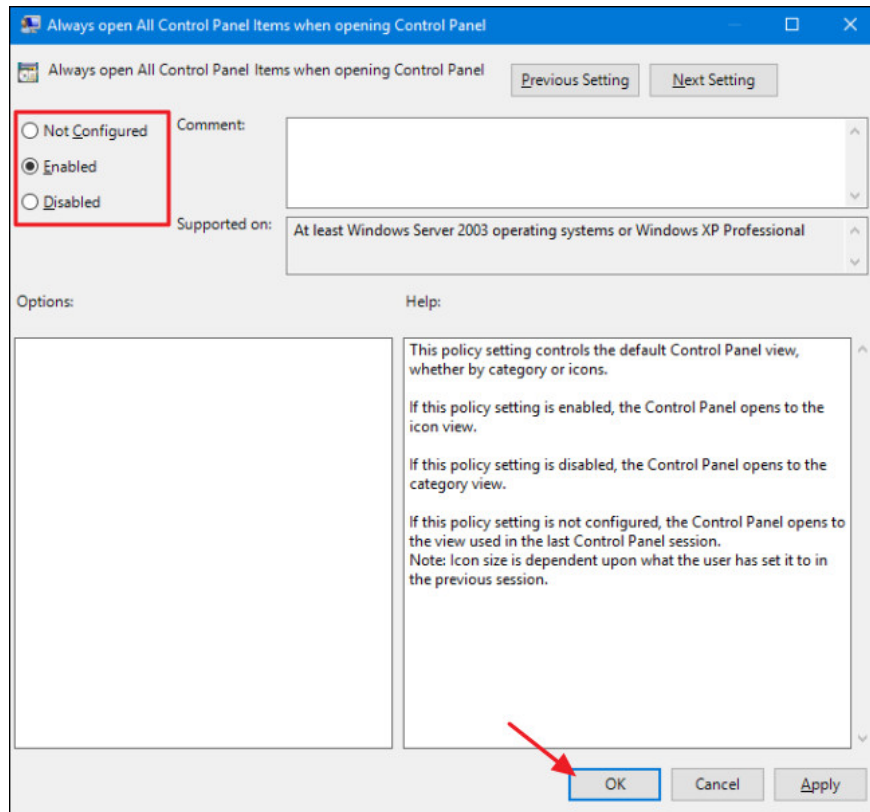
In the right pane, find and double-click the option called **Always open All Control Panel Items when opening Control Panel** .



Now on the screen appears the **Properties** window, where you can configure according to 1 of 3 options below:

1. Select Not Configured to set the Control Panel to always open the last time you use it.
2. Select Enabled to force Control Panel to open in the view with the icon. It can be Large or Small icon.
3. Select Disabled to force the Control Panel to open in the Category view.

After selecting, click **OK** .



Finally close the **Local Group Policy Editor** window and you do not need to restart the computer, open the Control Panel window and check the changes.

If you want to return to the initial default settings, follow the same steps and set the option to **Not Configured** .

Refer to some of the following articles:

1. 6 ways to access Control Panel on Windows Server 2012
1. How is Control Panel and Settings menu on Windows 10 different?
1. Search and launch Java Control Panel on Windows operating system

Good luck!

You finished reading the article "**Change the default Control Panel view to a Windows computer**" edited by the [TipsMake](#) team. We hope this article has provided you with many useful tech tips and tricks. You can search for similar articles on tips and guides. Thank you for reading and for following us regularly.