

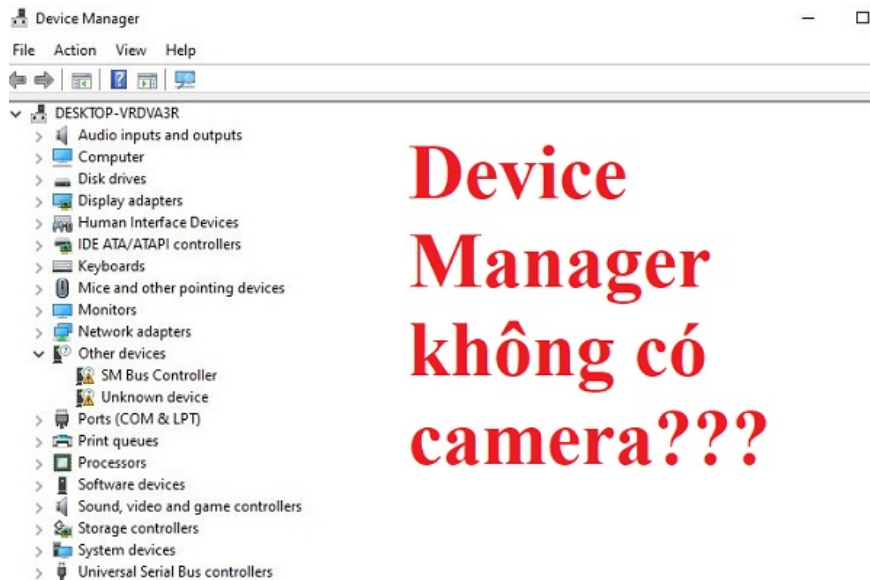
Camera not found in Device Manager - See now how to fix it

Not finding the camera in Device Manager is the situation you are facing? See TipsMake's instructions now!

Not finding the camera in Device Manager is the situation you are facing? See TipsMake's instructions now to fix this problem!

Your camera is not working on your computer and you need to update the camera driver. But annoyingly, you **can't find the camera in Device Manager** . It's not just you, countless other computer users also have the same problem. The solution has been thoroughly shared by **TipsMake** in today's **computer tips** section.





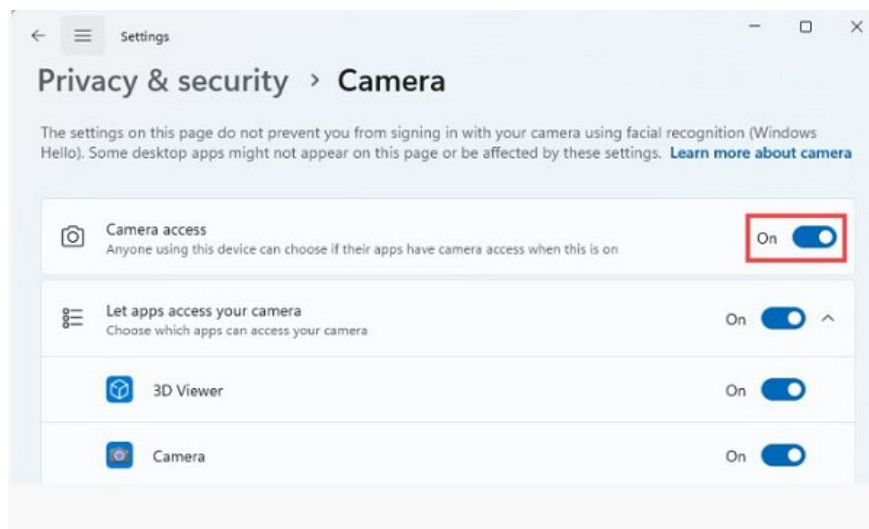
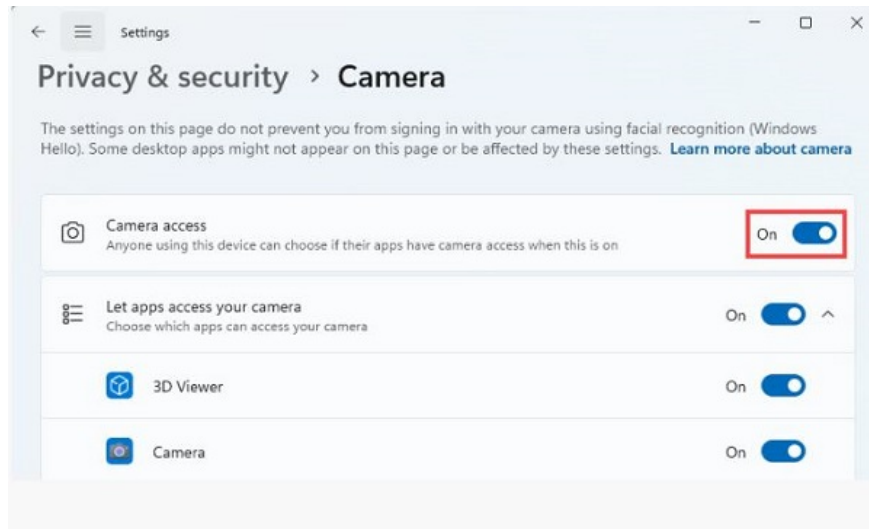
Details on how to fix the camera not found error in Device Manager

The error of not finding a camera on a Windows 11/Win 10 laptop is quite a common problem. The cause of this situation may be due to some software or camera malfunction. Luckily, there are countless solutions for you to fix when you encounter a camera not found error on your Windows 10 laptop.

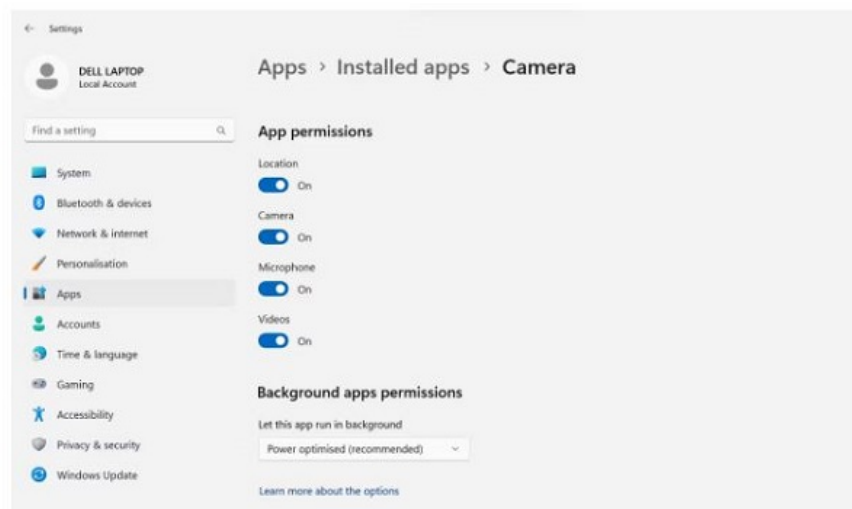
Turn on the camera on your computer

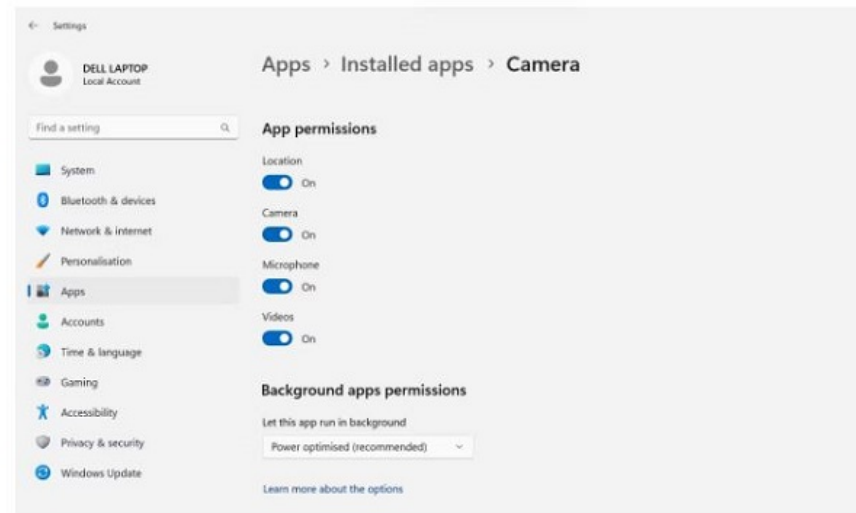
First, we must consider the case that you have not allowed your computer to access the camera. This leads to the situation where Device Manager does not have a camera. Therefore, you need to activate according to the steps below:

1. **Step 1** : Press **Windows + S** and enter the keyword ' **camera privacy settings** ' into the search bar that appears > When the results appear, click to open it.
2. **Step 2** : Then, find the line **Camera access** > If you see the switch of this item in the OFF state, turn it **ON** .



For Windows 11 : Open the search engine, enter the keyword ' camera ' > When the results appear, right-click on the Camera application > Select **App Settings** > Then, in the **App permissions** section > Make sure **Camera** is enabled. activated.





Check if the camera is hidden in Device Manager

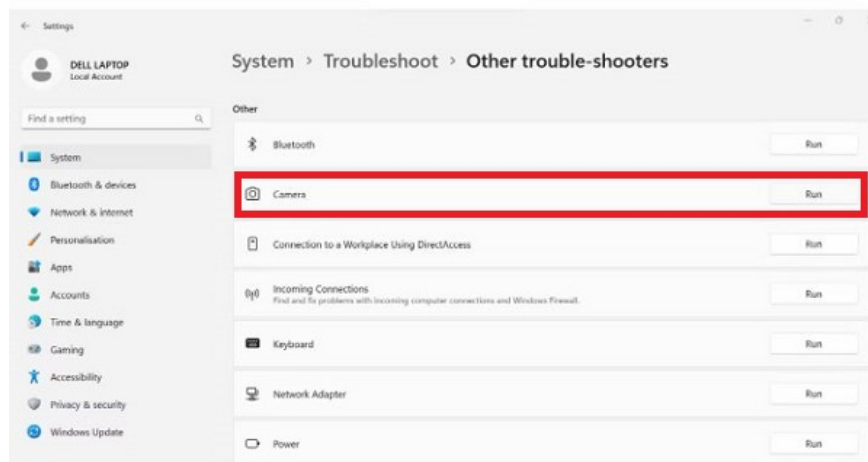
It's also possible that the camera isn't showing up in Device Manager because it's hidden. Please follow these steps to check!

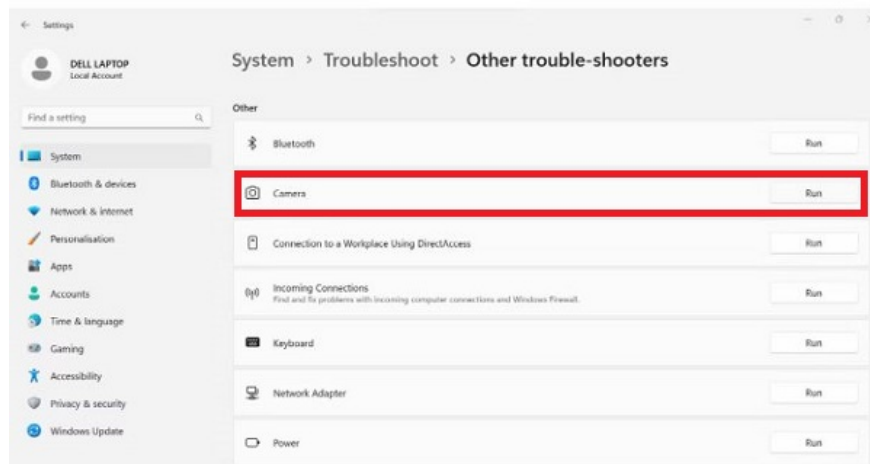
1. **Step 1** : Right-click the **Start** button > Select **Device Manager** .
2. **Step 2** : Click on the **View** tab > Tick select **Show hidden devices** > Then, see if the camera has reappeared or not.

Proceed to run the Camera Troubleshooter

(Do it on Windows 11, with Win 10 you do the same interface and the steps will be a little different)

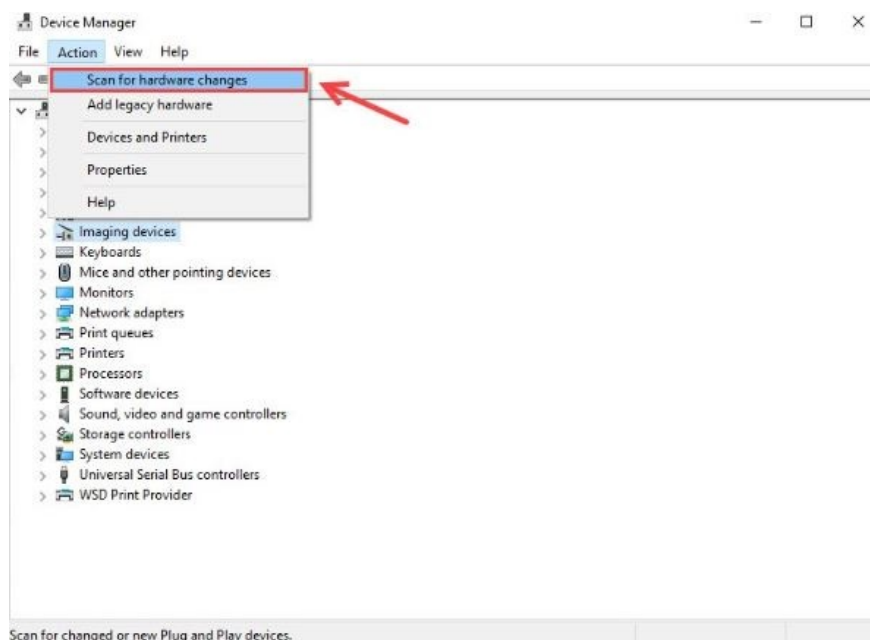
1. **Step 1** : Press **Windows + I** to open Settings > Select **System** .
2. **Step 2** : Click on **Troubleshoot** > Continue to select **Other troubleshooters** .
3. **Step 3** : Click **Run** next to **Camera** > Wait for the system to check and follow the suggestions on the screen (if any)

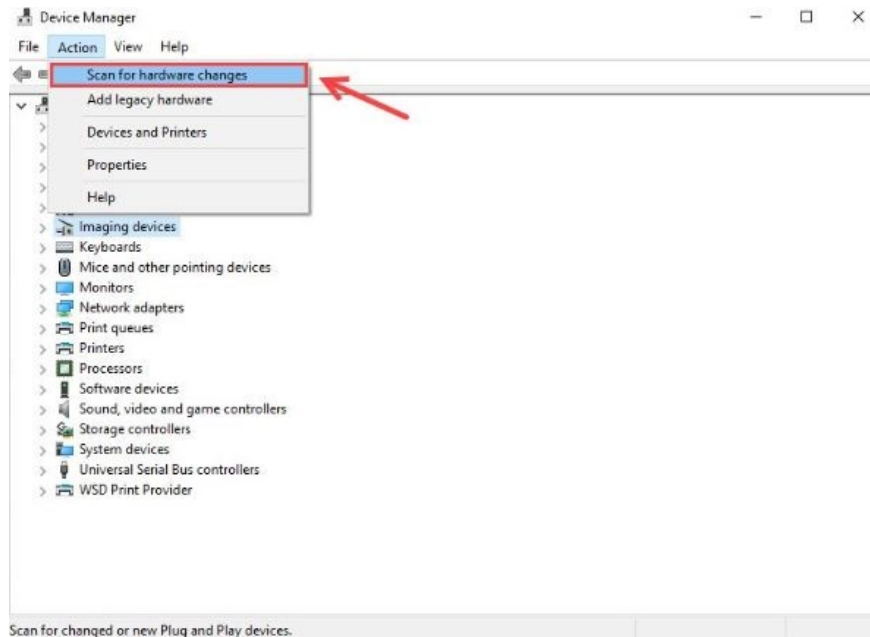




Scan for hardware changes

1. **Step 1** : You need to press **Windows + X** > Click to select **Device Manager** .
2. **Step 2** : Then, click to select **Cameras (or Imaging devices/ USB devices)** (note, only click once to select, not double click to open).
3. **Step 3** : Next, click on the **Action** tab above > Select **Scan for hardware changes**
> If you see the webcam displayed, the detector has been successfully detected and now you need to restart the computer to Save this change.





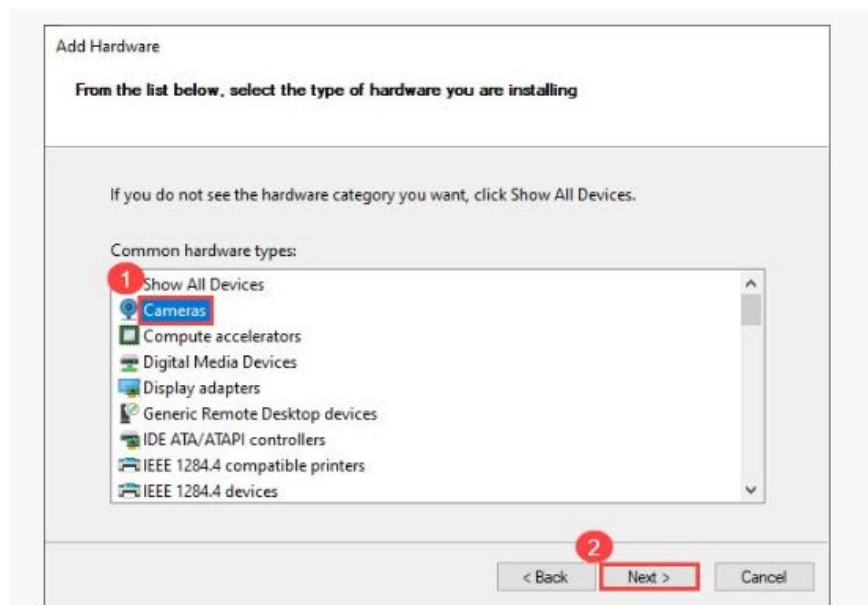
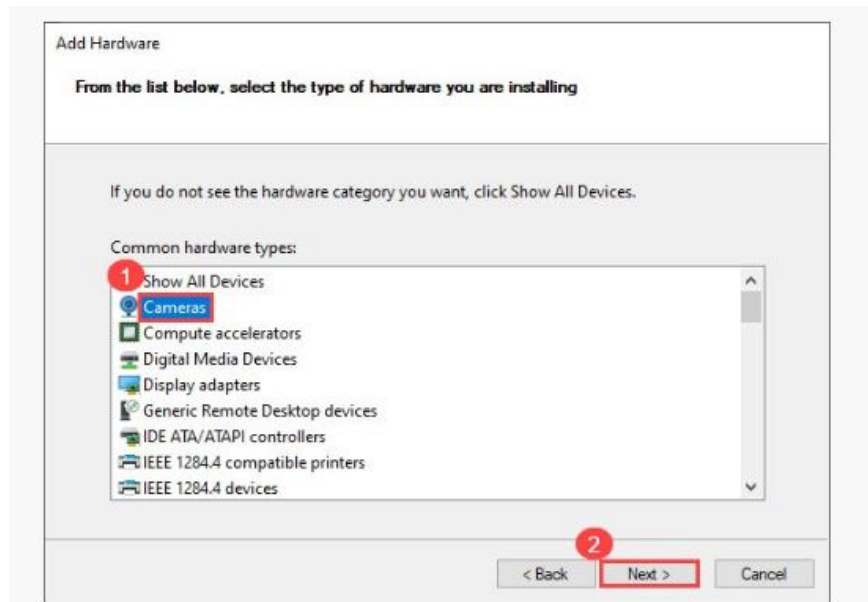
Download the camera driver manually

First, try restarting your computer. Because when a driver is damaged or missing, Windows will automatically reinstall that driver. But if the camera driver does not appear in Device Manager even after you have restarted the device, users should install the driver manually.

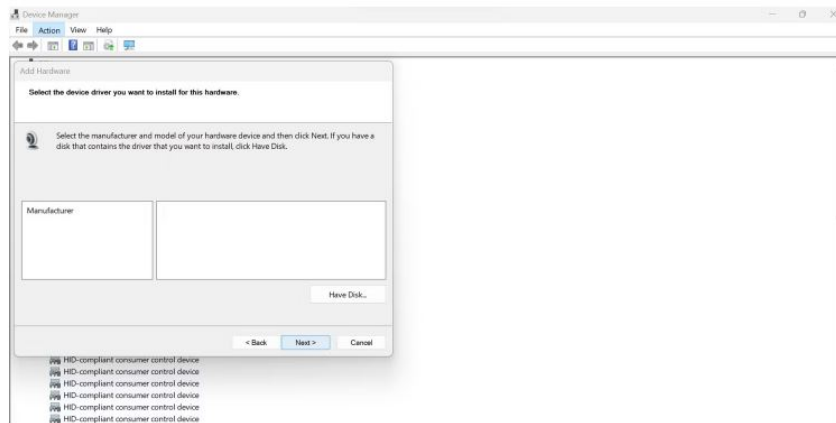
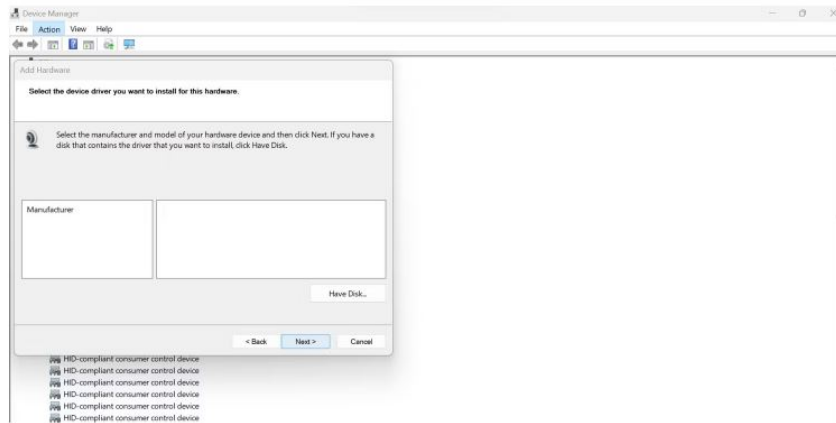
Users just need to visit your laptop manufacturer's website, for example Lenovo, HP, Asus, Dell etc. Then you search for the latest camera driver and download it. Continue following the on-screen instructions to complete this process.

Add camera device in Device Manager

1. **Step 1** : Open Device Manager according to the instructions above > Then, click the **Action** tab and select **Add legacy hardware** > Continue clicking **Next** when the message displays.
2. **Step 2** : Tick the line '**Install the hardware that I manually select from a list (Advanced)**' in the new window and then click **Next** .
3. **Step 3** : Tick to select **Camera** > Click **Next** .



1. **Step 4** : In case you see the camera driver appear here, just select the device and click **Next** and follow the instructions to complete the process. If it is not displayed, there may be a problem with the device's hardware.



1. **Step 5** : After successfully adding, restart your computer for these changes to take effect.

TipsMake has revealed some ways when the camera cannot be found in Device Manager. Wishing you success in finding your camera according to my instructions!

You finished reading the article "**Camera not found in Device Manager - See now how to fix it**" edited by the [TipsMake](#) team. We hope this article has provided you with many useful tech tips and tricks. You can search for similar articles on tips and guides. Thank you for reading and for following us regularly.