

Bluetooth laptop error, cause and how to fix

Bluetooth is one of the important features on laptops that helps connect to other wireless devices such as phones or headphones. Laptops often have errors with Bluetooth, making many users confused about how to handle it. If you encounter this situation, please refer to TipsMake's guide on how to fix Bluetooth errors on laptops.

Talking about **Bluetooth errors**, there are many errors that occur along with countless surrounding troubles, but you don't have to worry too much when **your laptop's Bluetooth has errors** because TipsMake always sends readers the most standard error correction articles and solutions to ensure computer safety.

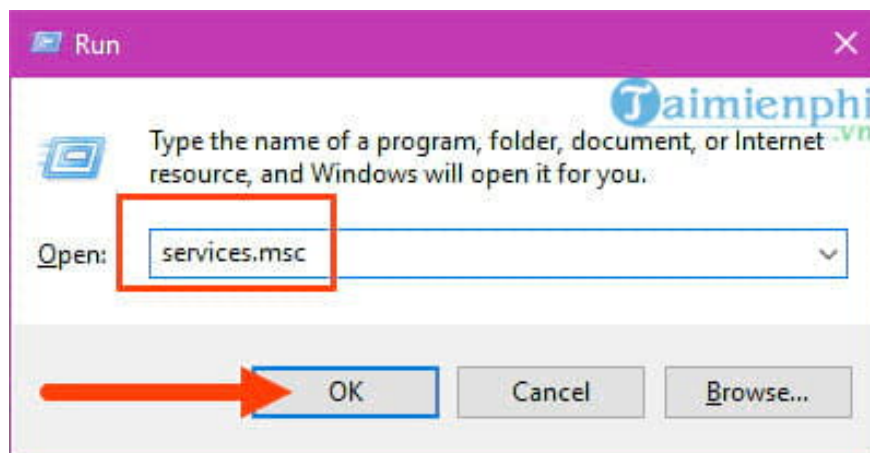
In today's article, we will summarize the Bluetooth errors that can occur on laptops along with how to fix them. We also know that Bluetooth is very important on computers, but users are quite indifferent because there are simply too many alternative solutions to Bluetooth, but when faced with a situation where Bluetooth is needed, they struggle to find a way to fix it. To avoid the above situations, equip yourself with the knowledge to be able to fix laptop Bluetooth errors when encountered.

Instructions to fix Bluetooth laptop error

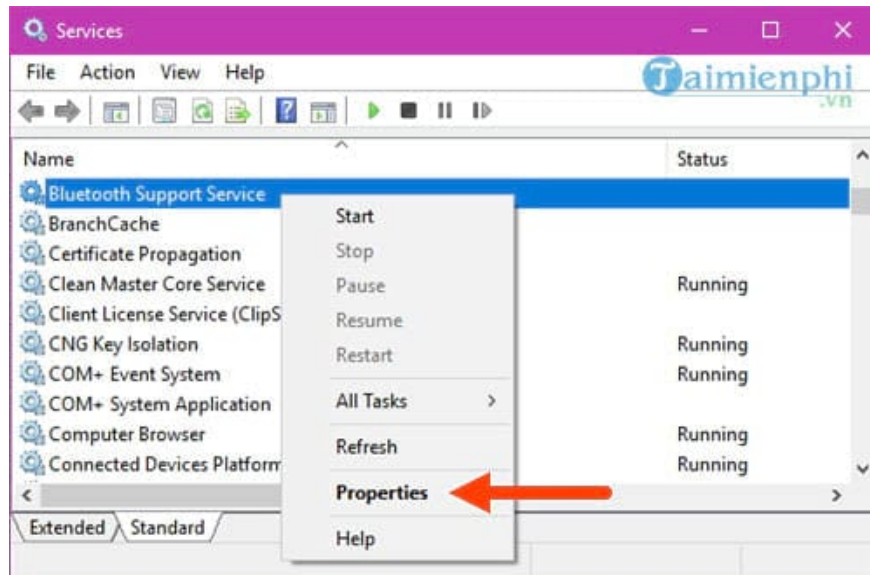
1. Bluetooth not working error

You have tried everything but Bluetooth does not work, even though you turn it on, Bluetooth cannot connect to other devices, follow these steps to restart Bluetooth and see if it works normally again.

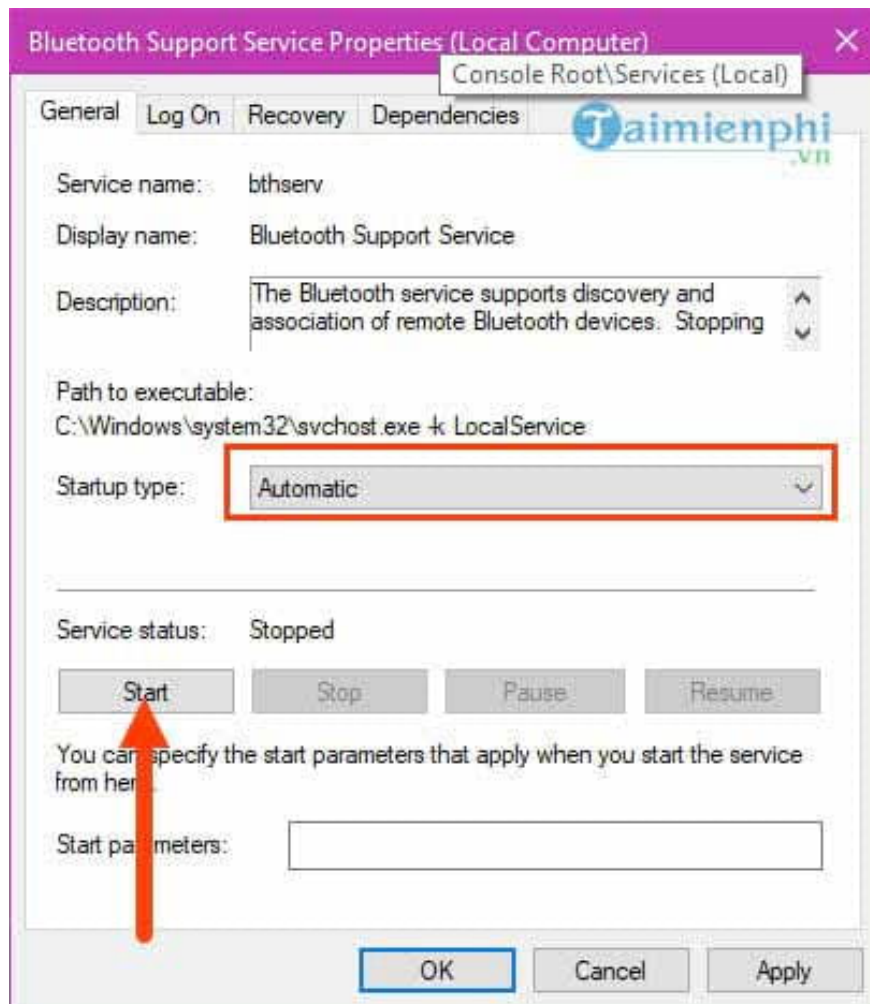
Step 1: First, press the **Windows + R** key combination, then enter " **services.msc** " and press **OK** to confirm access to the management of services running in Windows.



Step 2: Find a process named **Bluetooth Support Service** and right-click on it and select **properties**.



Step 3: In **Properties** of **Bluetooth Support Services**, select **Automatic** and click **Start** to launch the Bluetooth system.

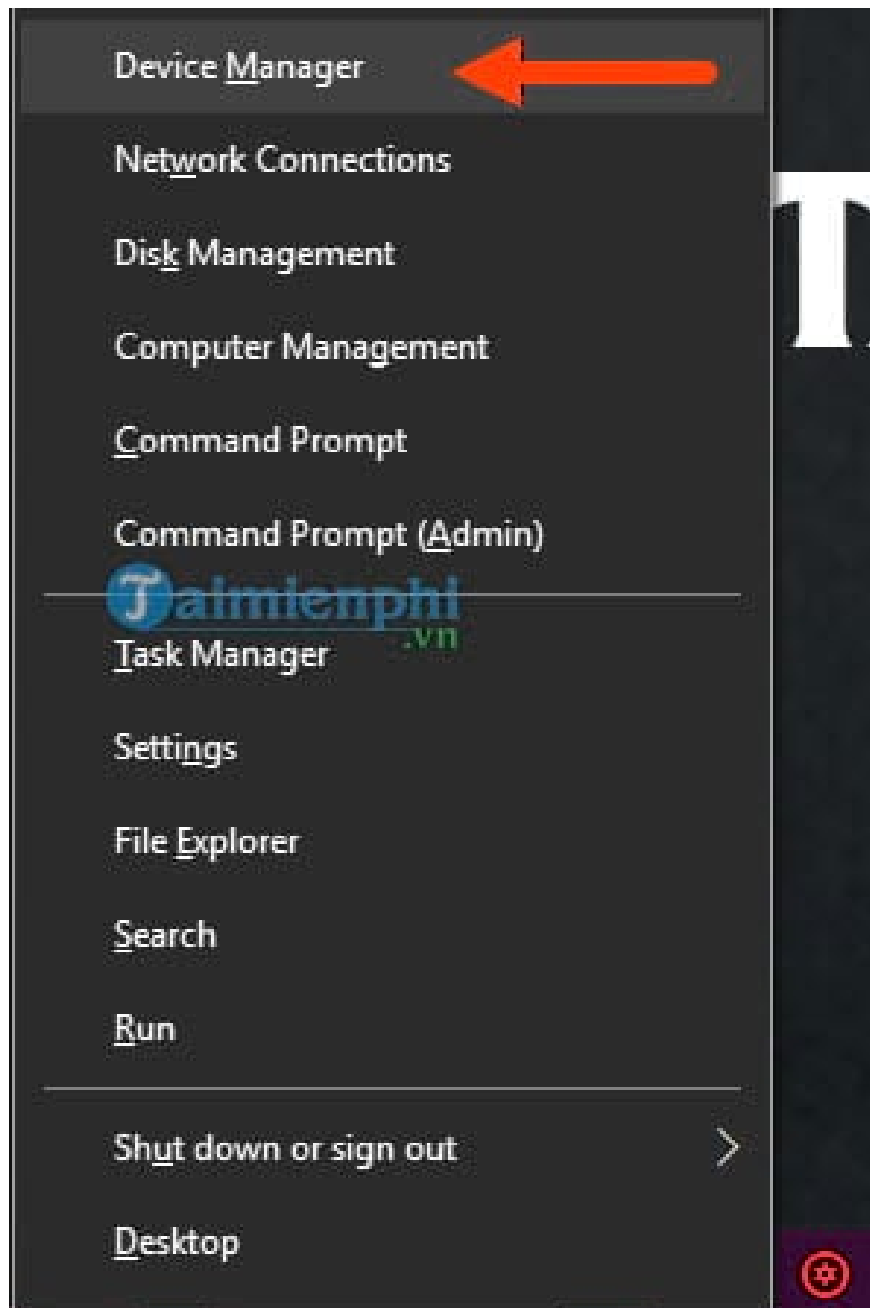


After this step try connecting Bluetooth to your peripheral to see if it works normally again.

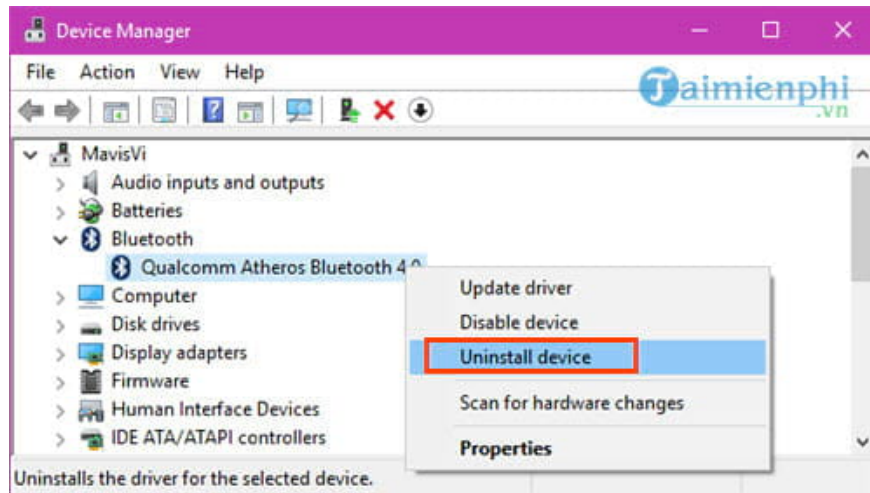
2. Bluetooth error running but not connecting

This error in laptop Bluetooth happens very often, the main reason is probably that your current driver version has an error or a virus has corrupted a file, to fix this error in laptop Bluetooth is very simple, you just need to delete the old Bluetooth or upgrade to the new version of Bluetooth as follows.

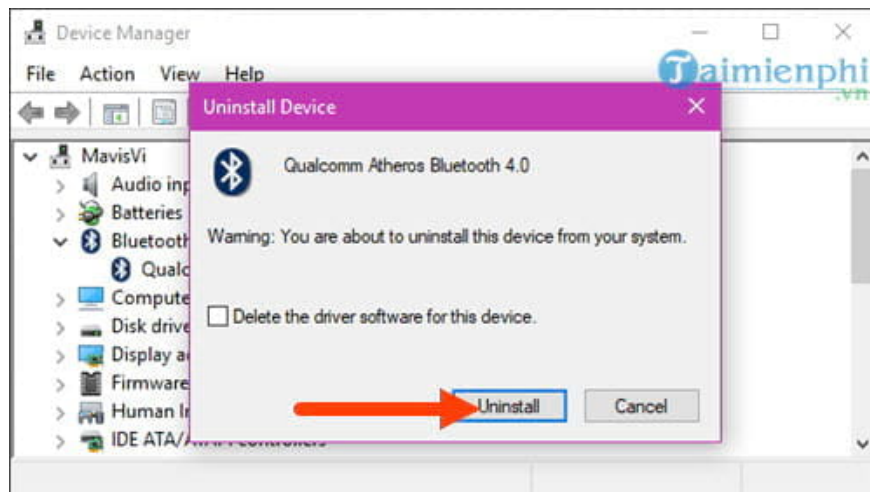
Step 1: Press the **Windows + X** key combination to open the Power Menu, then select **Device Manager**, which manages drivers for input and output devices.



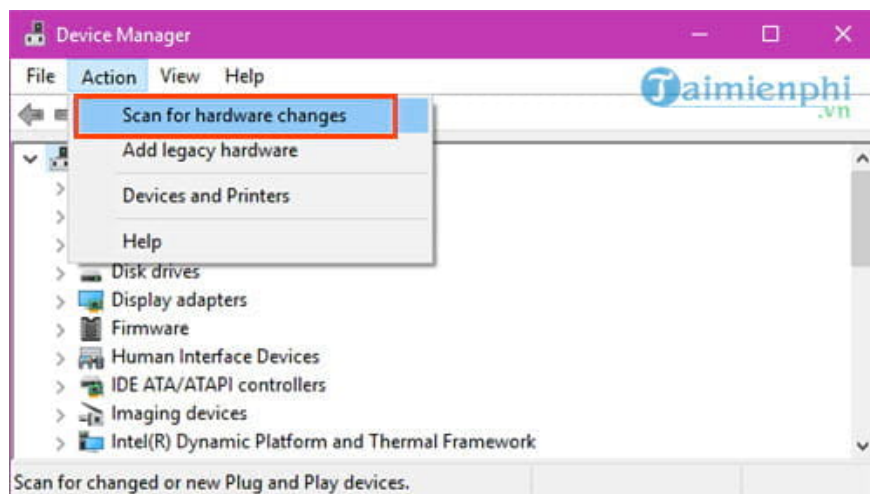
Step 2: Find the Bluetooth driver section, right-click and select **Uninstall device**.



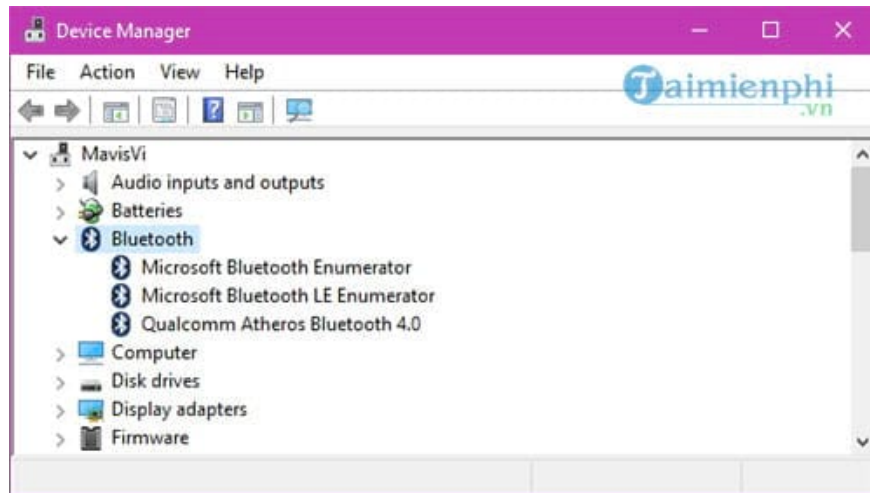
Step 3: When the system asks you to confirm, click **Uninstall** to remove them.



Step 4: After removing, select **Action > Scan for hardware changes** .



Wait a moment and you will see all Bluetooth drivers installed on your computer as shown below.

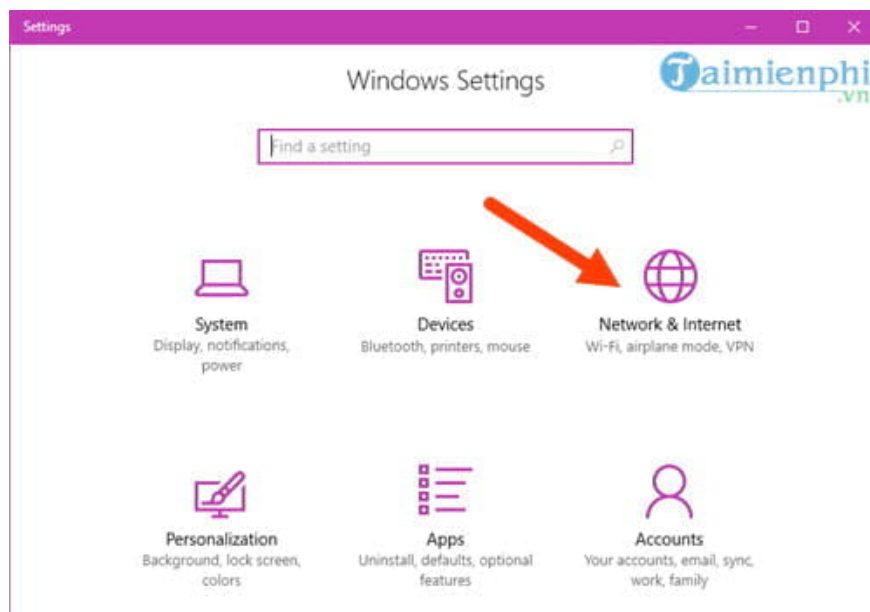


Now try again to see if the laptop Bluetooth error is gone.

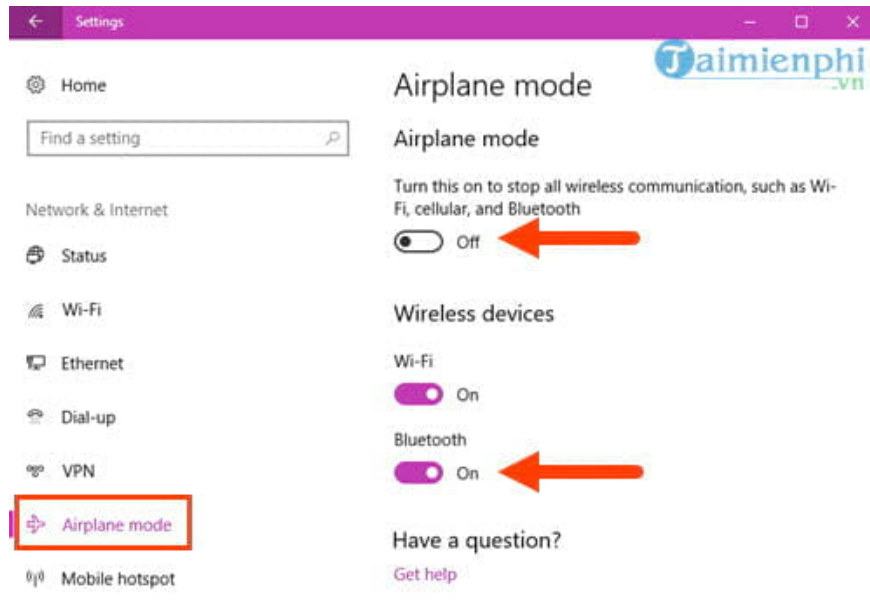
3. Bluetooth not available

This error is very common after you update Windows, especially Windows 10. To fix the error Bluetooth is not available, we need to restart the Bluetooth system on the computer.

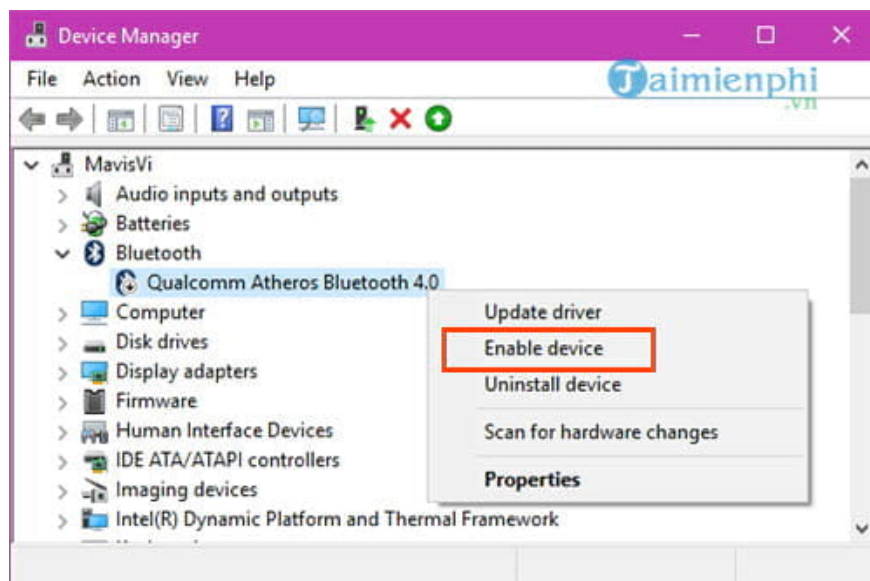
Step 1: Press the key combination **Windows + I** to open Windows Settings and then access the **Network & Internet** section, make sure you have turned off airplane mode.



Step 2: Here you just need to check if **Airplane mode** is off and Bluetooth is on.



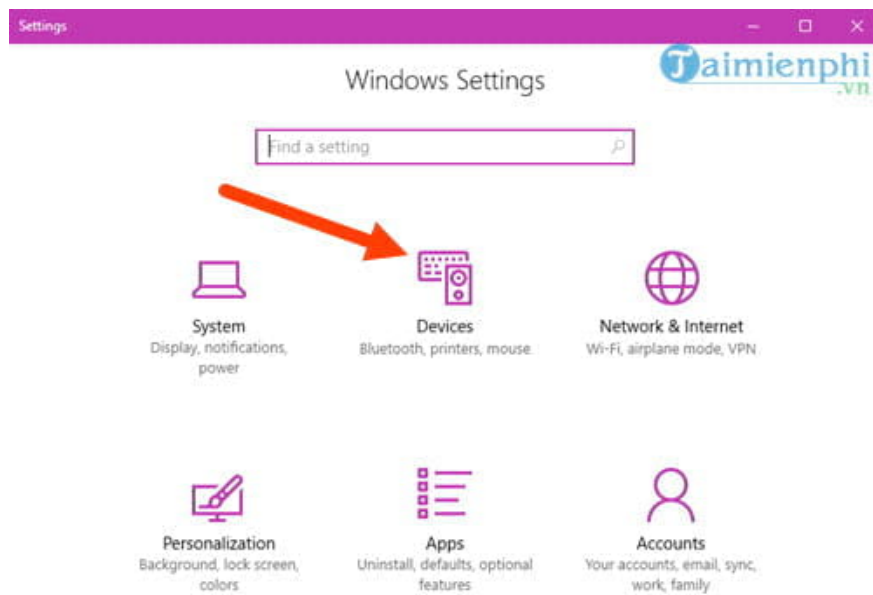
Or you can go to **Device Manager** mentioned above and turn on **Bluetooth** , most likely you have not **enabled the device** .



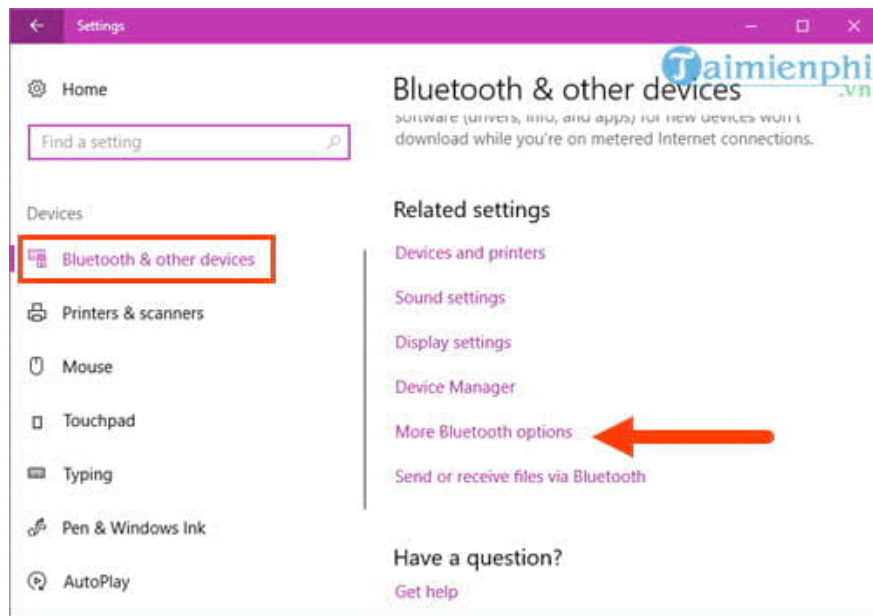
4. Laptop Bluetooth not found.

Most Bluetooth laptops have this error because you have not allowed your device to be displayed around to catch Bluetooth. In this error, we just need to turn on the display mode for Bluetooth again.

Step 1: Press the **Windows + I** key combination to open **Windows Settings** and then access the Device section.



Step 2: In the Device section, select **Bluetooth & other devices** and select **Bluetooth options** .



Step 3: In **Bluetooth Settings**, enable 2 modes: Allow **Bluetooth devices to find this PC** and **show the Bluetooth icon in the notification area** .



Then you just need to **Apply** > **OK** and close the window.

Above are 4 basic ways to help you fix the Bluetooth laptop error, although it is a basic error but is often overlooked, fix any problems that occur on the computer so that your operating system can operate smoothly, if you have any difficulties, please leave a message in this article. Not only basic Bluetooth errors, or Bluetooth not working error on Windows 10, we can completely help you, by the way, those who are using Windows 10 and have the above error, please see the article on how to fix **Bluetooth not working error on Windows 10 and follow the instructions.**

You finished reading the article "**Bluetooth laptop error, cause and how to fix**" edited by the [TipsMake](#) team. We hope this article has provided you with many useful tech tips and tricks. You can search for similar articles on tips and guides. Thank you for reading and for following us regularly.