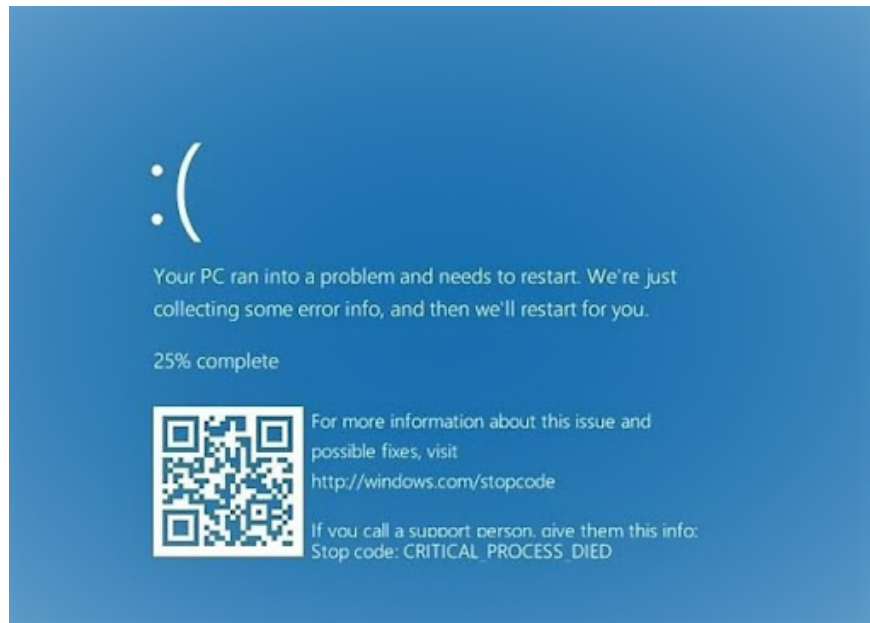


# Blue Screen Error: Causes and Effective, Simple 'Fixes'

Blue screen of death error has long been a nightmare for computer users today. So what causes the error and how to fix it effectively?

**Blue screen error** is one of the common errors that occur when you use your computer. There are many causes of this situation such as hardware and software. Therefore, to fix this error, experts have come up with many effective ways to fix it. Specifically about this issue will be updated below.

## 1. Causes of the terrifying blue screen error



Blue screen error is a familiar term among computer users. In fact, this error is called blue screen of death (BSOD), one of the fears of those who have experienced the error.

Because this error always occurs unexpectedly, there is no sign to warn the user. The scary thing is that all the data and tasks you are performing will also be 'disappeared' with that blue screen. This error can even cause the entire Windows operating system to crash completely and lead to the inability to boot anymore.

**Currently, there are 2 main causes of blue screen errors: hardware and software. Specifically:**

### 1.1. Blue screen error with hardware

Blue screen errors can occur during the process of upgrading or replacing any components. At this time, the user's computer system, specifically the hardware driver, will automatically update the process, leading to conflicts in the computer.

## 1.2. Blue screen error in software

With software, the blue screen error is less common than with genuine software. Instead, it usually occurs when the computer or laptop is suddenly attacked by strange software, malicious code containing viruses or malware.

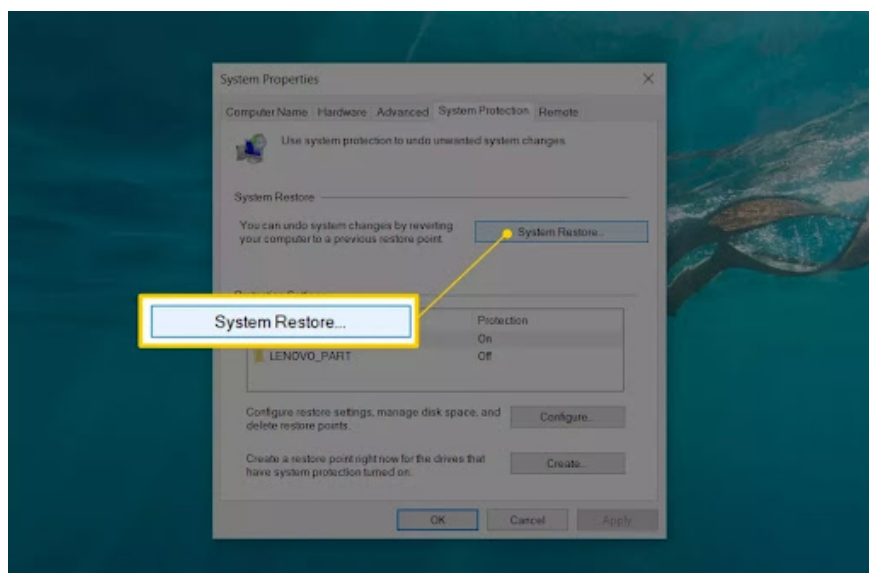
## 2. How to fix blue screen errors effectively and simply on Windows

There are many effective ways to fix the blue screen on your computer. So you can choose the easiest way to 'get back' your computer screen as before:

### 2.1. Using System Restore

When using System Restore to restore the screen, do the following in order:

Here, you will see a list of times to restore the screen. Select a time on it and then click the continue command (Next). A new interface appears, click Finish to confirm the command and succeed.



### 2.2. Reinstall Windows updates

You can update Windows if you see a blue screen error. When you update Windows, you will completely fix the errors and reinstall the faulty software system as well as all the drivers.

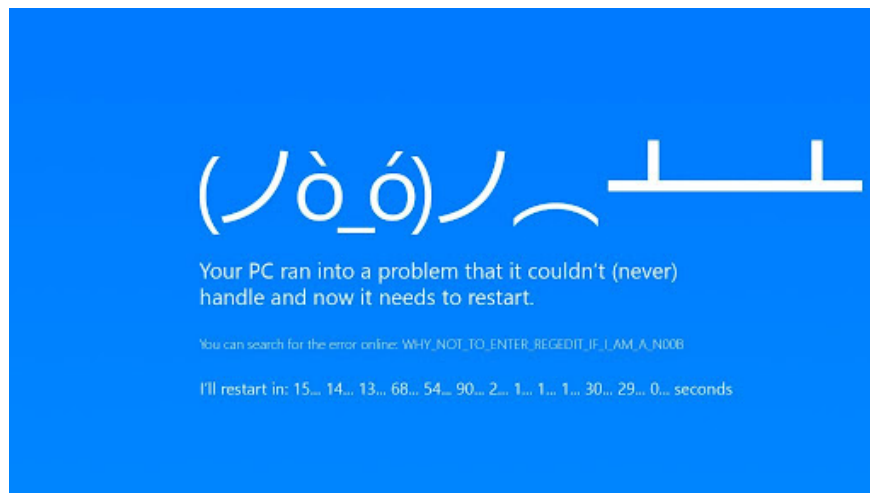
### 2.3. Install the latest driver version

In addition to updating the latest driver to fix the blue screen of death (BSOD) error of the whole system. This error may appear due to the driver being incompatible with the system, leading to a conflict and causing the blue screen to appear. If your computer is like above, delete the recently downloaded driver versions, then restart your

computer and check again.

**Below are some drivers that often cause blue screen errors.**

- **Display Adapter Driver**
- **Wireless Adapter Driver**
- **Ethernet Adapter Driver**



## **2.4. Check hard drive errors**

Hard drive errors are also among the top causes of blue screen errors. You can take advantage of Windows 7's testing tools to evaluate whether your computer's memory or hard drive has errors or not. Here's how to do it:

- Double click on **My computer** . The drive list includes **C - D - E** , then click on the drive you want to view.
- Select the '**tools**' tab then click on '**check now**' .
- A new '**check now**' interface appears, you check the 2 categories including '**automatically fix**' and '**scan for bad sectors**' .
- Then click '**start**'

In case the computer cannot perform the check process you just created because there is no active drive. At this time, the system will ask you to check again at the next startup and click on 'schedule disk check' and you're done.

## **2.5. Perform Clean Boot**

Clean Boot is one of the effective ways to fix blue screen errors used by many people. With this method, you will disable all unknown services of Microsoft. Implementation details include:

- **Press the Windows + R** flag key combination to open the **Run window**

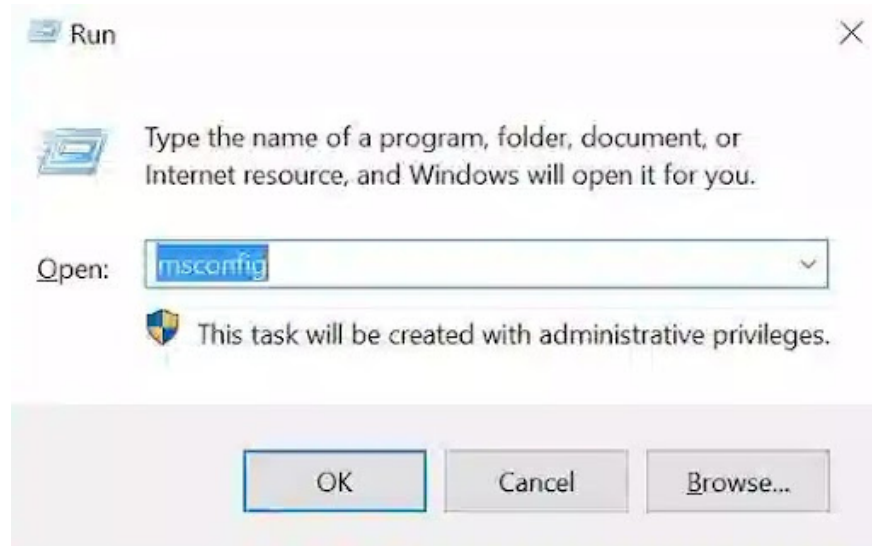
- Enter the code 'msconfig' into the blank Run command window , then press **Enter** and the **System Configuration** utility window will appear .

- On the window you just opened, in the **Services** tab, check the box ' **Hide all Microsoft services** '.

- You proceed to select the ' **Disable All** ' button, here all non-core Microsoft services will be completely disabled on ' **Windows Startup** '.

- Continue to select **OK** for the changes to be applied, then turn off and restart the computer.

- Once you complete the above steps, the computer will operate normally.



**Hoang Ha Computer** has just shared information about the causes of **blue screen errors** and effective ways to fix them. Currently, hardware errors are more common than software errors and there are many simple ways to fix errors at home without having to spend money on repairs. However, if you have applied all the above methods but the screen still returns to the same, go to the center immediately for timely repair.

You finished reading the article "**Blue Screen Error: Causes and Effective, Simple 'Fixes'**" edited by the [TipsMake](#) team. We hope this article has provided you with many useful tech tips and tricks. You can search for similar articles on tips and guides. Thank you for reading and for following us regularly.