

## Beautiful skylight designs for tube houses

Here are the designs of skylights for beautiful, modern tube houses, please refer.

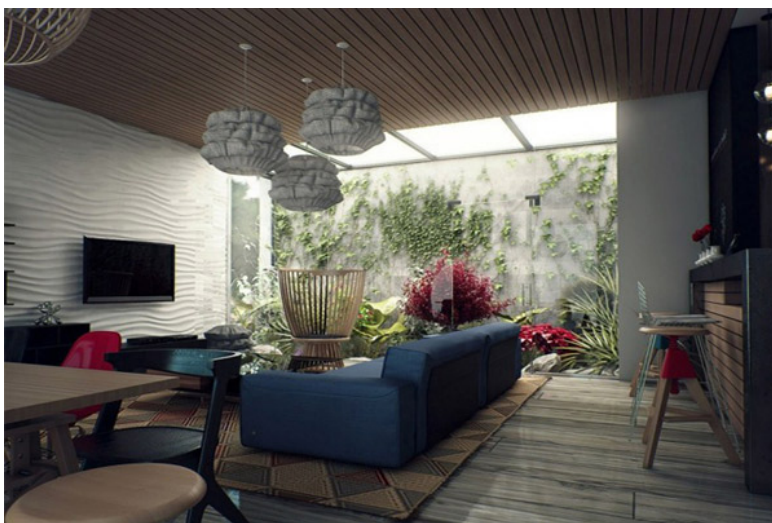
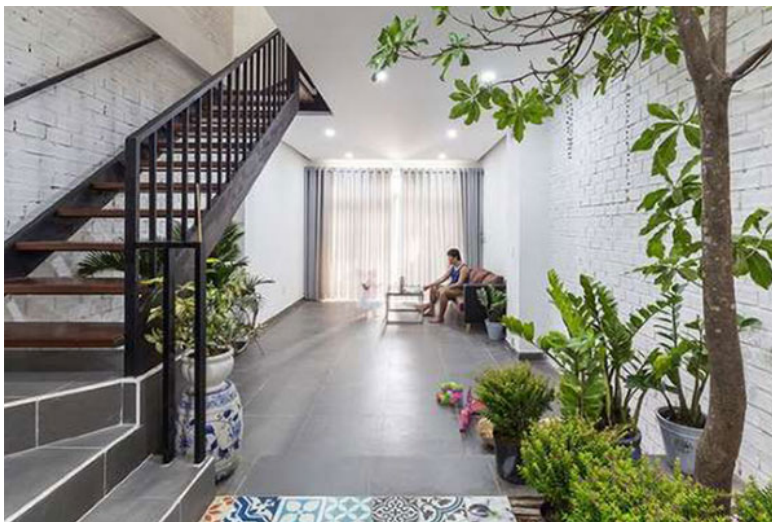
Skylights are a straight space from the roof to the first floor, a solution that many people choose for small tube houses, built side by side to get more light and make the indoor atmosphere become should be ventilated, more comfortable.

In addition to helping get more light and wind, skylights in small tube houses are also designed with high aesthetic value to become a highlight for the home, making the living space more beautiful.

Here are the designs of skylights for beautiful, modern tube houses, please refer.

Skylight is located at the end of the house and is designed as a beauty garden for living space.







Skylight is located between the living room and kitchen space, designed into a beautiful landscape to help bring light, air and create a highlight for the house.



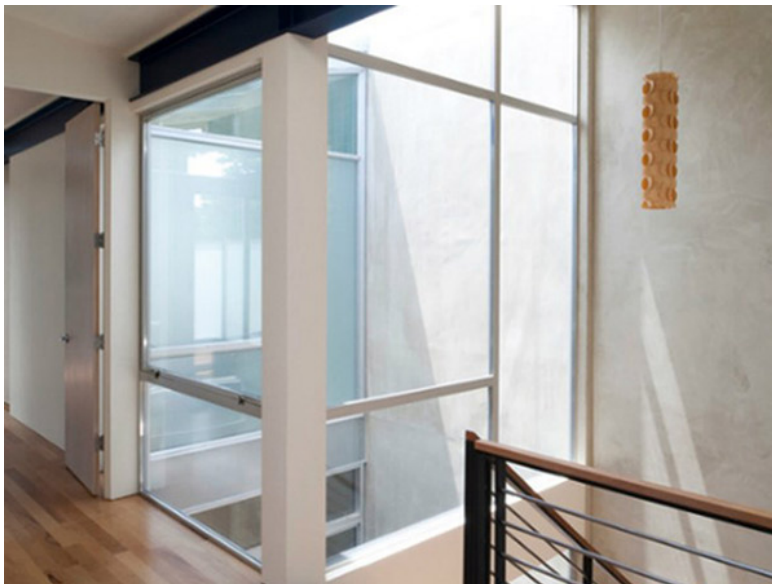


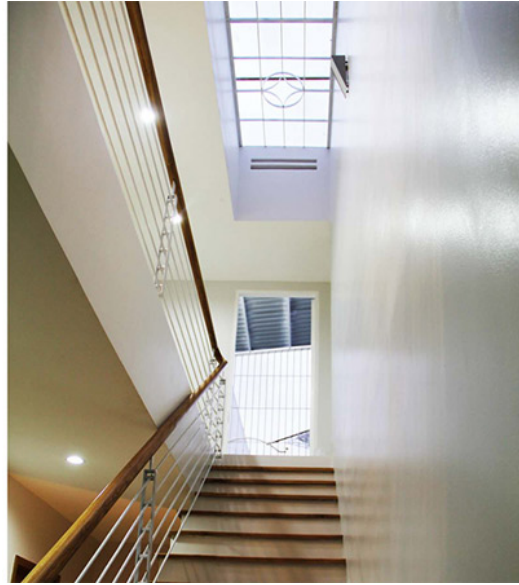
Skylight is designed very nicely and modern to bring a very unique style to the tube house.





Skylights are designed simply associated with the stairs area.





Skylights are designed to be a highlight of the home's space.



Skylights are designed to be a place for family members to relax.



Simple skylights combined with bonsai pots help increase the vitality of the house.



1. 17 beautiful and modern tube house facade designs
2. Principles of design stairs for tube houses
3. Samples of beautiful, modern and luxurious staircases for tube houses

You finished reading the article "**Beautiful skylight designs for tube houses**" edited by the [TipsMake](#) team. We hope this article has provided you with many useful tech tips and tricks. You can search for similar articles on tips and guides. Thank you for reading and for following us regularly.