

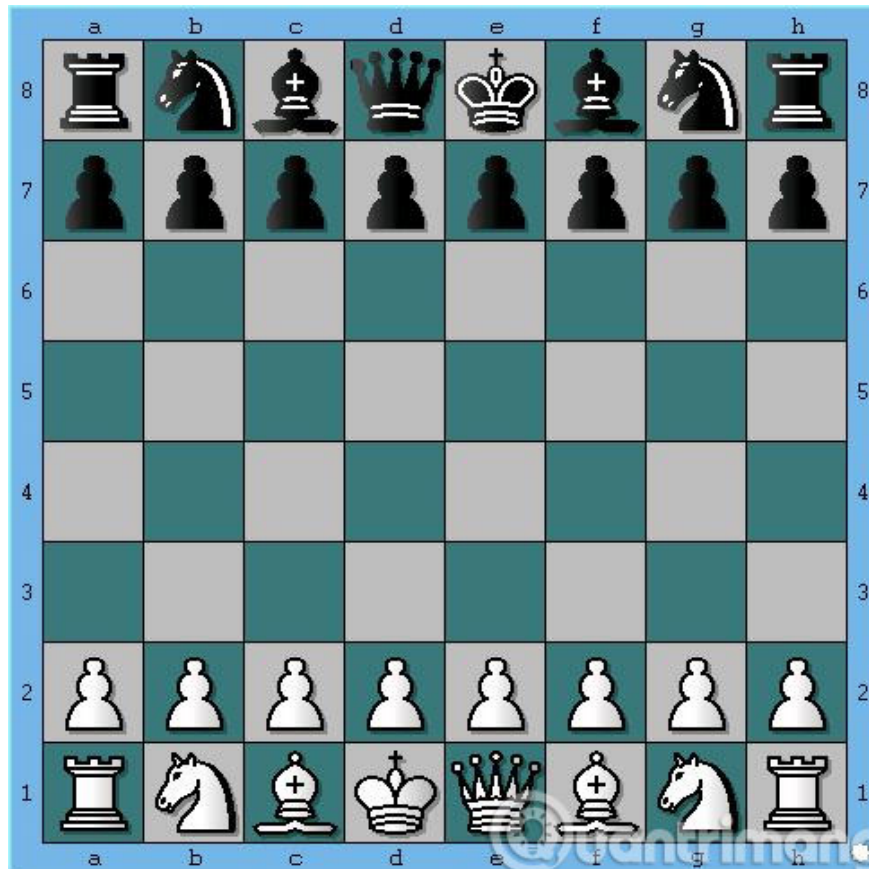
Basic knowledge in chess

Chess is an intellectual sport that both relaxes gently and increases thinking ability for all ages. Today, TipsMake.com would like to send you the basic knowledge in chess as recognizing the chess pieces, game rules. Please consult.

Chess is an intellectual sport that both relaxes gently and increases thinking ability for all ages. Today, TipsMake.com would like to send you the basic knowledge in chess as recognizing the chess pieces, game rules. Please consult.

1. Summary of chess board and chess pieces

1. **Chessboard** : Chess board consists of **64** bright (white) and dark (black) alternating boxes. Horizontal cells are marked with letters from **A** to **H** and vertical cells are marked with numbers from **1** to **8** .



1. **Chess pieces** : Below is the name, symbol and number of chess pieces

CÁC QUÂN CỜ VUA		
	HẬU	1
	VUA	1
	XE	2
	TƯỢNG	2
	MÃ	2
	TỐT	8

2. How to move each piece

1. **Good** : Each side has 8 good units, the first move can jump 2 but the following moves only 1 box. Good eat diagonally in front of him, unable to eat when he stands taller than his troops eat
2. **Vehicle** : allowed to move vertically or horizontally from its position.
3. **Code** : Move diagonal lines within 6 rectangular cells from the distance it stands, can jump over cells that stand.
4. **Statue** : Can move diagonally in the direction that it stands.
5. **Post** : It can be considered as a very strong force in the chessboard because it is allowed to move in a wide range of horizontal, vertical and diagonal rows from its position.
6. **King** : Each turn only jumps 1 box, allowed to go horizontal, vertical and diagonal

3. The rules of the game

1. When the chess board was finished, the two sides moved alternately to turn their chess pieces.

2. The goal of both sides is to attack the opponent's king, causing the king to "evade" or the prime minister. Which side makes the king on the opponent's side unable to "run" anymore, that party wins.
3. If the game is played without any side, it is a draw
4. When the chess piece moves to another cell where the troops are standing, if the color is different, they can eat that army. But if the same color is wrong and must move elsewhere.
5. Above, only the most basic knowledge in chess. When playing, you need to flexibly adapt to each opponent's move.

Wish you happy new year!

You finished reading the article "**Basic knowledge in chess**" edited by the [TipsMake](#) team. We hope this article has provided you with many useful tech tips and tricks. You can search for similar articles on tips and guides. Thank you for reading and for following us regularly.