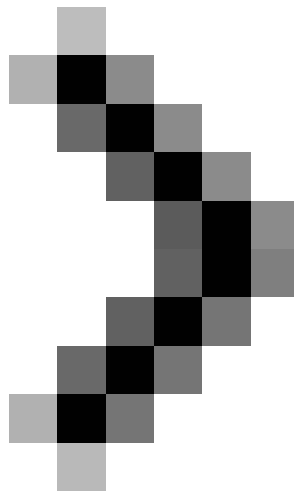


Backup for Exchange Server with DPM 2007 - Part 2: Configure DPM 2007

Although we can still use earlier versions of DPM (DPM 2006) to back up Exchange Server, it does include a two-step method. With the new version, DPM 2007 is used to support online Exchange backup, so you won't need any other backup utilities.



Backup for Exchange Server with DPM 2007 (Part 1)

Rui Silva

Configuring DPM 2007

After completing the DPM installation process, there are some necessary configuration tasks that we need to

accomplish:

1. Add one or more disks to the storage system
2. Install protection agents for each computer you want to protect
3. Create one or more protection groups

The following procedures will describe in detail how to perform the above tasks.

1. Log in to DPM server with a domain user account and have local administrator rights. On **Start** , point to **All Programs , Microsoft System Center Data Protection Manager 2007** , and then click **Microsoft System Center Data Protection Manager 2007** .

2. DPM 2007 requires a dedicated disk for storage (the disk you installed DPM cannot be used for storage). Although the pre-existing drive in the storage disk may have free space, DPM can only use it in the drives it creates. To create all available disk space for storage, you need to delete existing disks on this disk, then add the disk to the storage system.

In **DPM Administrator Console** , in the **Management** section, the **Disk** tab, panel **Actions** , click **Add** . As introduced in Part 1, the example DPM server has all the disks used to use DPM 2007, so we will add the entire drive to the storage area. When we do that, we get a warning that the disk will be moved to dynamic state (Figure 1). After clicking Yes, the disk will appear in the DPM storage section (Figure 2).



Figure 1: Warning

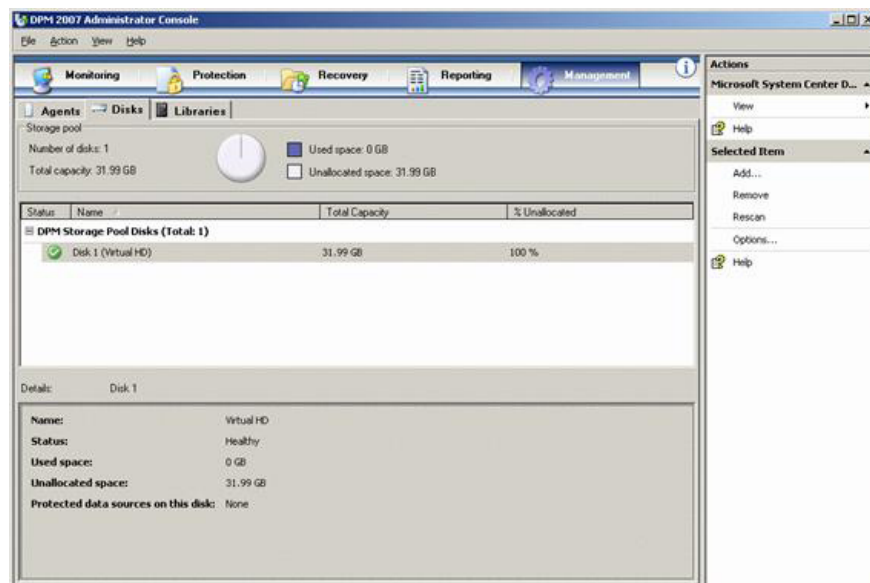


Figure 2: DPM storage disks

3. To install the protection agent (Protection Agent), in **DPM Administrator Console** , in the **Management** area, **Agents** tab, panel **Actions** , click **Install** . The **Protection Agent** installation window will appear and guide you through the process of creating the protection agent. In the **Select Computers** window (Figure 3), select one or several computers from the **Computer name** list, click **Add** , and then click **Next** .

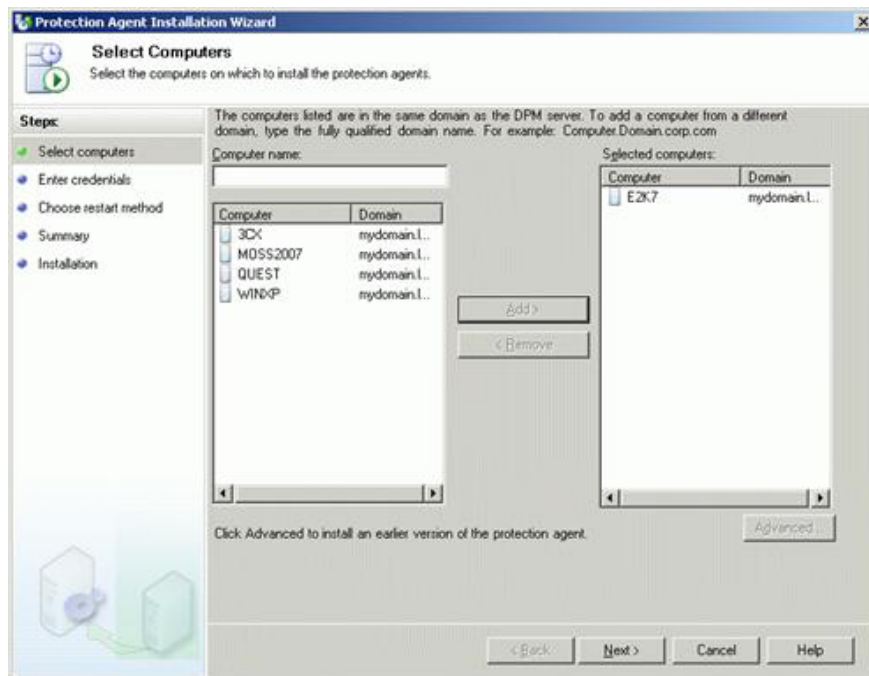


Figure 3: Select computers

4. In the **Enter Credentials** window (Figure 4), you need to enter the information such as the username and the corresponding password for the domain account that is a member of the local administrator group with all the selected servers. , and then click **Next** . In the **Choose Restart Method** screen (Figure 5), select the method you will use to restart the computers after the protection agent is installed. The computer must be restarted before starting data protection. Click **Next** .

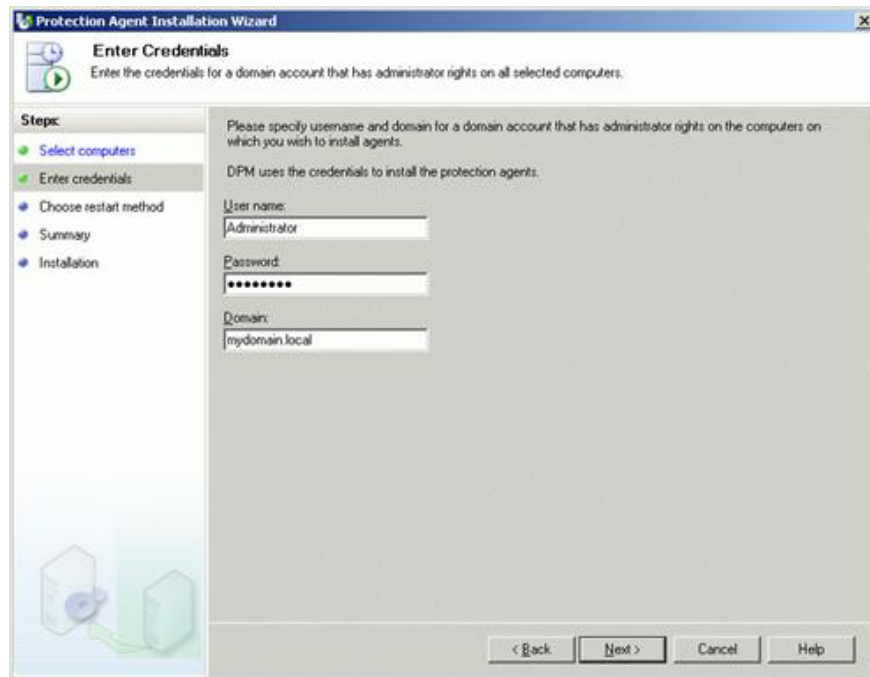


Figure 4: Import information window



Figure 5: Select reboot

5. In the **Summary** screen (Figure 6), click **Install** to begin the installation. On the **Installation** screen, the results will appear on the **Task** tab to indicate whether the installation was successful (Figure 7). Click **Close** .

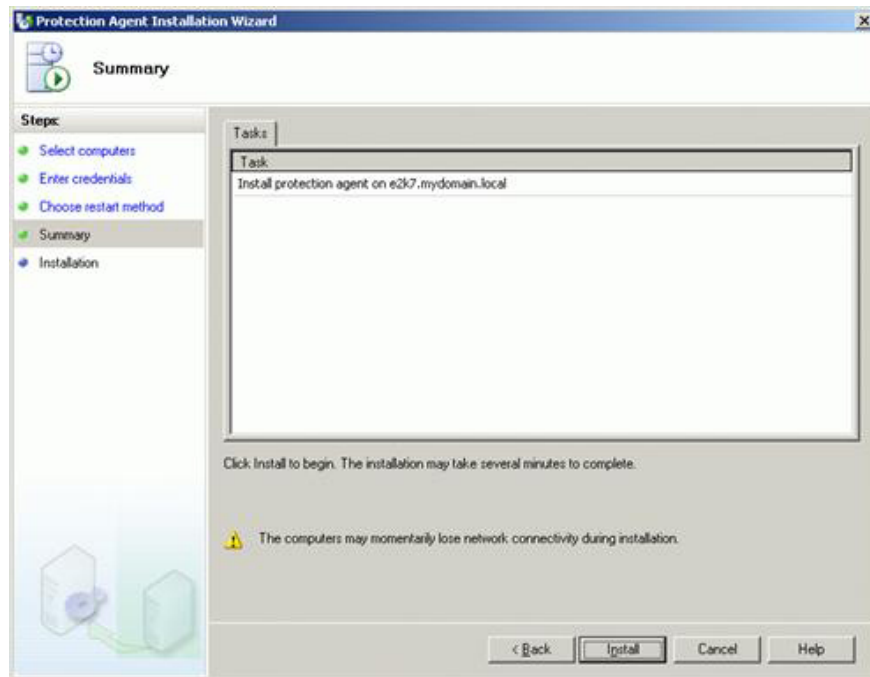


Figure 6: Summary window

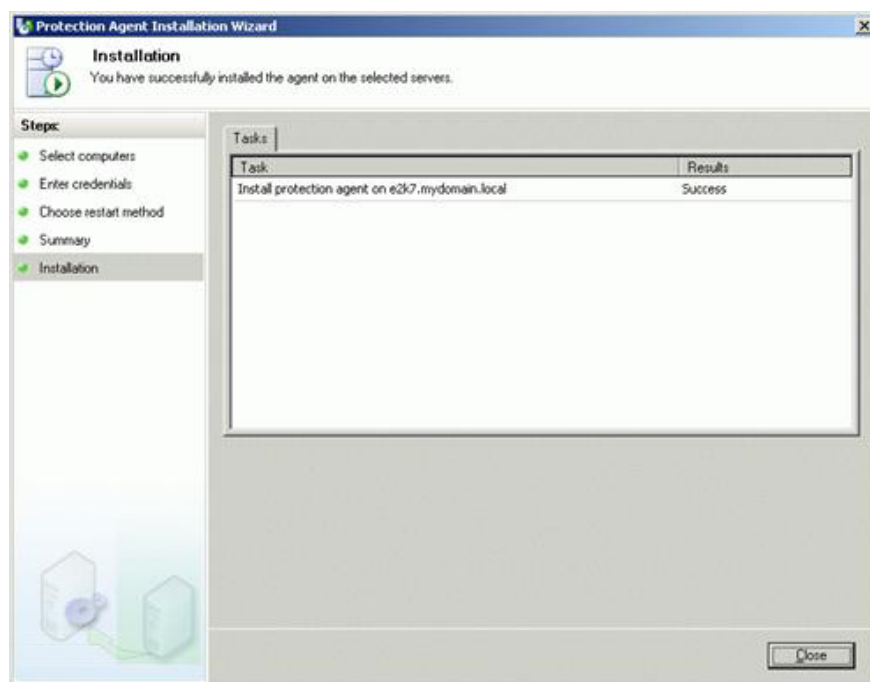


Figure 7: Installing Agent

6. After the server is rebooted, it will appear as **Unprotected computers with protection agent** (Figure 8). If the server does not have enough prerequisites, the installation process will fail and you will see an error message window pop up (Figure 9). In other words, if the agent is installed, it will appear in **Add / Remove Programs** (Figure 10) and there is a new service running on that machine (Figure 11).

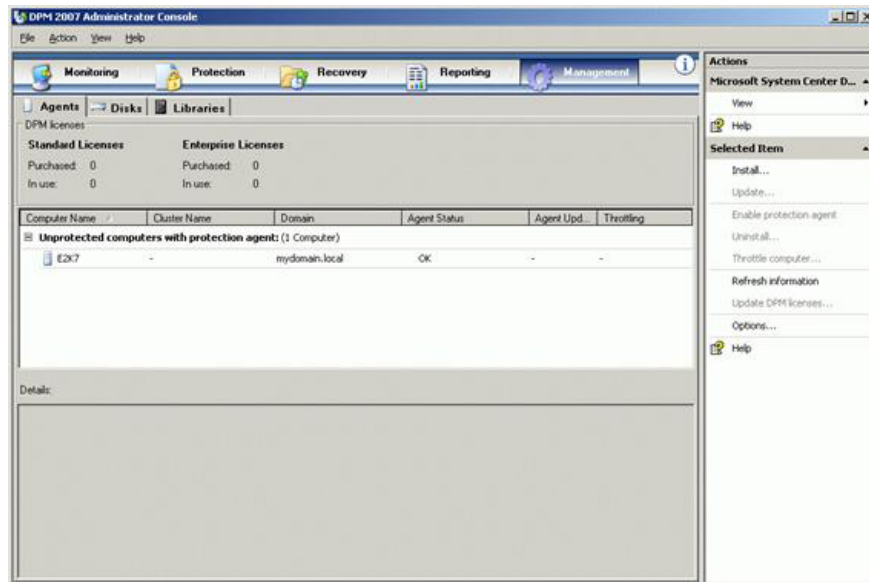


Figure 8: DPM Agent



Figure 9: Installation error message for DPM Agent

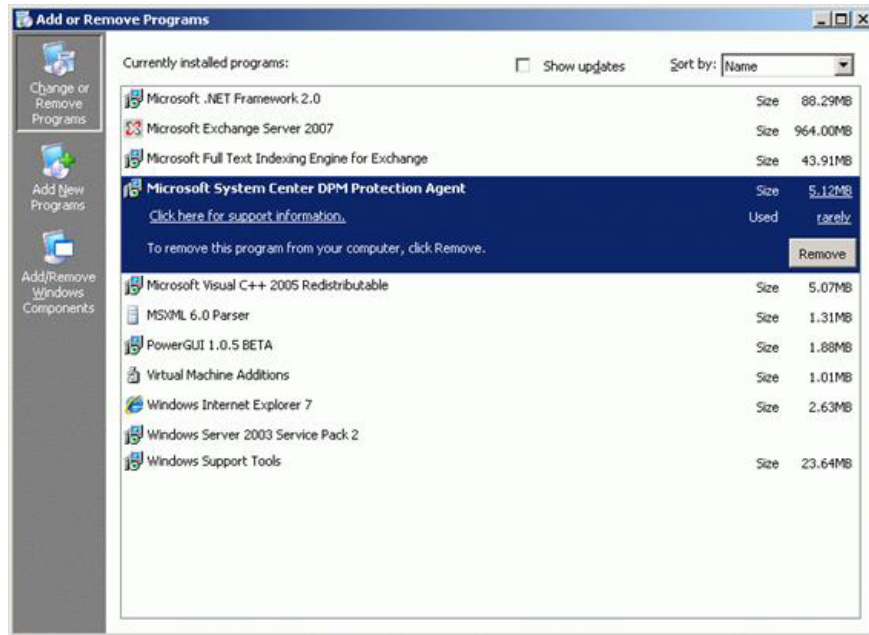


Figure 10: Add / Remove Programs

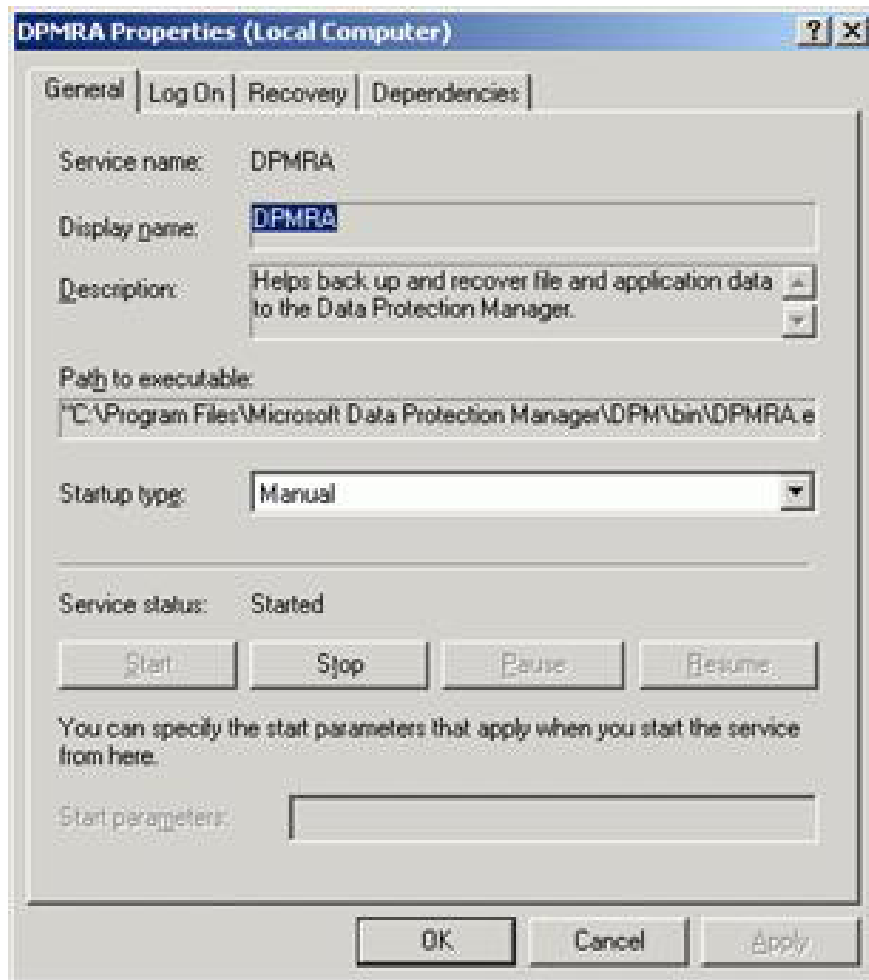


Figure 11: DPM Agent service

7. Before creating the Protection Group, since we protect Exchange Server, we have to copy the ese and eseutil files (usually located in the folder C: Program FilesMicrosoftExchange ServerBin) to the DPM server. Versions of the two files eseutil.exe and ese.dll installed on the computer running the most recent Exchange Server version must be the same version installed on the DPM server. The following table shows all possible scenarios to indicate the correct version of the eseutil.exe and ese.dll files that you must install on the DPM server. These files should be copied to the DPMbin directory with the path where you installed DPM 2007 (Figure 12).

Protect DPM server

DPM processor

Copy Exchange Server version of Eseutil.exe and Ese.dll files from:

- Exchange Server 2007 (64-bit)

32-bit

Exchange Server 2007

- Exchange Server 2007 (64-bit)
And
• Exchange Server 2007 (64-bit) and Exchange Server 2003

32-bit

Exchange Server 2007 (version 32-bit). Exchange Server 2007 version binaries can work with both Exchange Server 2007 and Exchange Server 2003 database versions.

You can obtain this version from Exchange Server 2007 Setup DVD or on Exchange Server TechCenter.

- Exchange Server 2007 (64-bit)
Or
• Exchange Server 2007 (64-bit) and Exchange Server 2003

64-bit

Exchange Server 2007

- Exchange Server 2003

32-bit

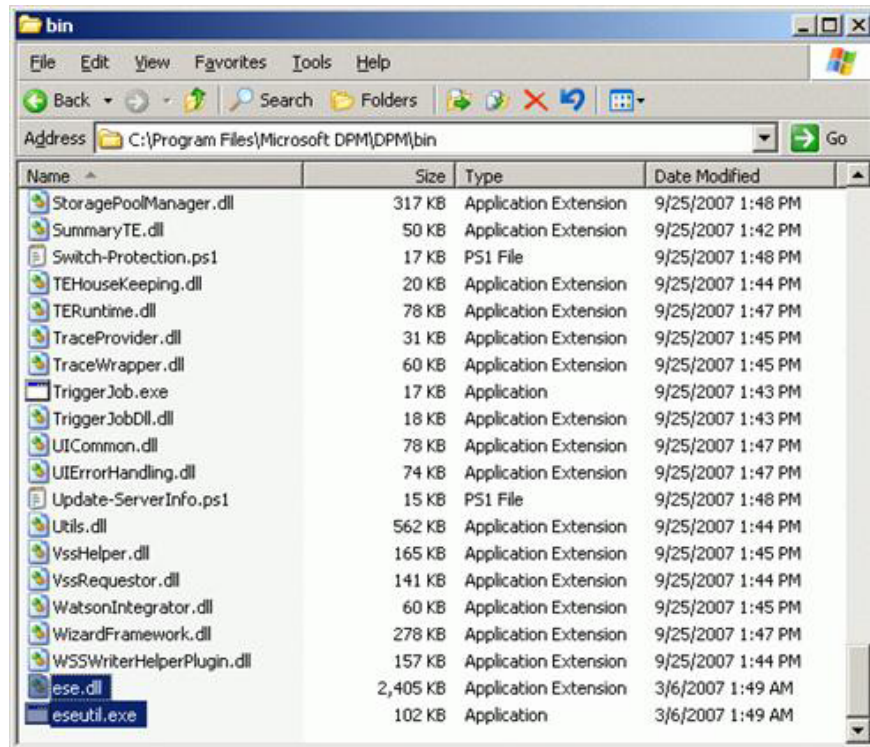
Exchange Server 2003

- Exchange Server 2003

64-bit

Exchange Server 2003

Table 1 : The script defines the versions of the files eseutil.exe and ese.dll



Name	Size	Type	Date Modified
StoragePoolManager.dll	317 KB	Application Extension	9/25/2007 1:48 PM
SummaryTE.dll	50 KB	Application Extension	9/25/2007 1:42 PM
Switch-Protection.ps1	17 KB	PS1 File	9/25/2007 1:48 PM
TEHouseKeeping.dll	20 KB	Application Extension	9/25/2007 1:44 PM
TERuntime.dll	78 KB	Application Extension	9/25/2007 1:47 PM
TraceProvider.dll	31 KB	Application Extension	9/25/2007 1:45 PM
TraceWrapper.dll	60 KB	Application Extension	9/25/2007 1:45 PM
Trigger.Job.exe	17 KB	Application	9/25/2007 1:43 PM
Trigger.JobDll.dll	18 KB	Application Extension	9/25/2007 1:43 PM
UICommon.dll	78 KB	Application Extension	9/25/2007 1:47 PM
UIErrorHandling.dll	74 KB	Application Extension	9/25/2007 1:47 PM
Update-ServerInfo.ps1	15 KB	PS1 File	9/25/2007 1:48 PM
Utils.dll	562 KB	Application Extension	9/25/2007 1:44 PM
VssHelper.dll	165 KB	Application Extension	9/25/2007 1:45 PM
VssRequestor.dll	141 KB	Application Extension	9/25/2007 1:44 PM
WatsonIntegrator.dll	60 KB	Application Extension	9/25/2007 1:45 PM
WizardFramework.dll	278 KB	Application Extension	9/25/2007 1:47 PM
WSSWriterHelperPlugin.dll	157 KB	Application Extension	9/25/2007 1:44 PM
ese.dll	2,405 KB	Application Extension	3/6/2007 1:49 AM
eseutil.exe	102 KB	Application	3/6/2007 1:49 AM

Figure 12: ese and eseutil files on DPM server

8. To create a Protection Group, in **DPM Administrator Console**, in the **Protection** area, in the panel **Actions**, click **Create protection group**. The **New Protection Group Wizard** will appear and guide the process of creating a protection group (Figure 13). Click **Next**.

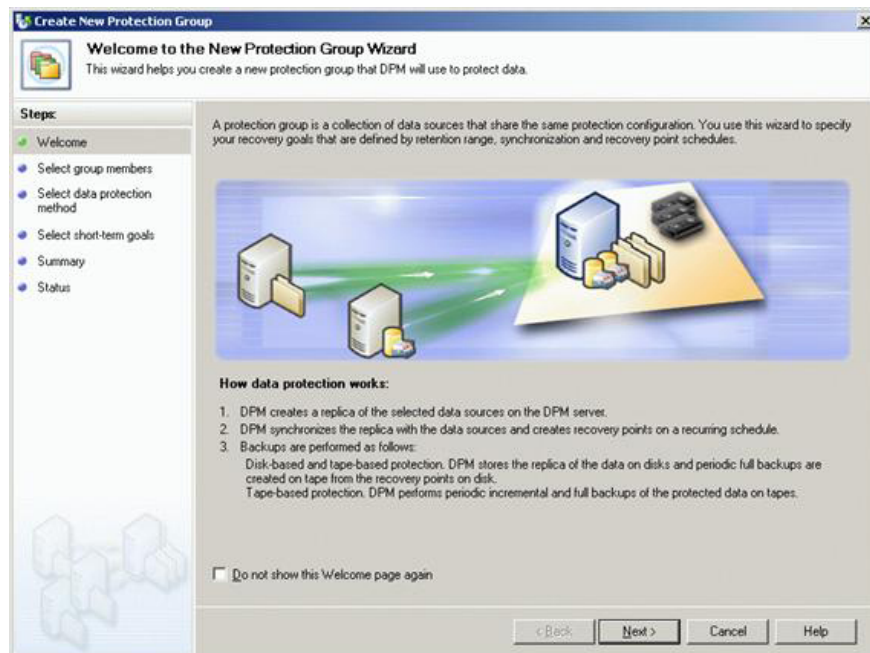


Figure 13: Group protection utility

9. In the **Select Group Members** window, verify that all computers that store the data you want to protect are displayed in the **Available members** box. In the **Available members** box, expand the server nodes to display the available data source on each server and to see available Exchange storage groups. Check the checkbox next to each storage group you want to include. When selecting the data source, your selections will appear in the **Selected members** box (Figure 14). Click **Next** .

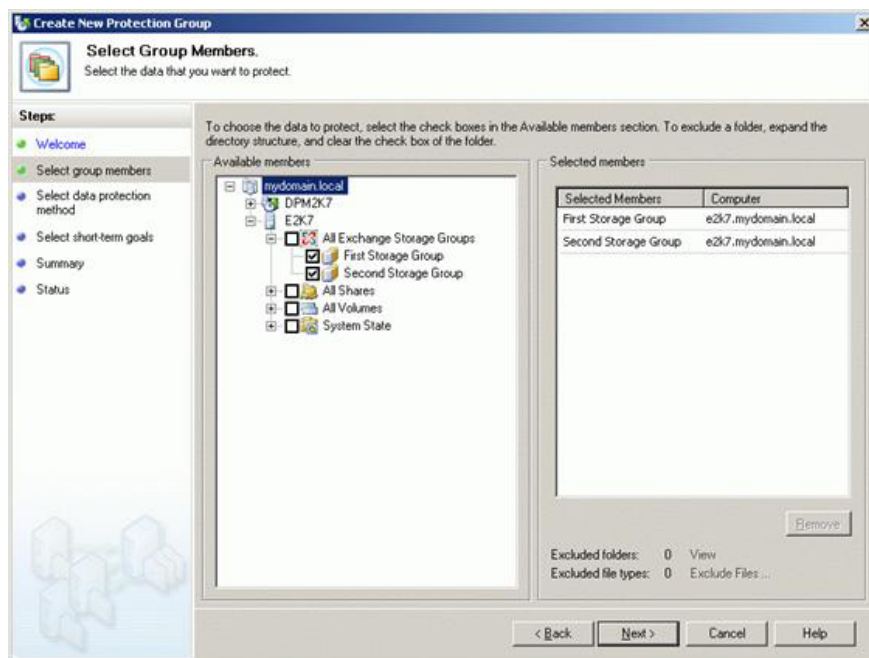


Figure 14: Select group members

10. In the **Select Data Protection Method** window, select the **I want short-term protection using** check box for **short-term protection** and then select the environment you want to use from the list in the select box. Since we do not have a tape storage library for DPM server, **Disk** is short-term protection (Figure 15). Click **Next** .

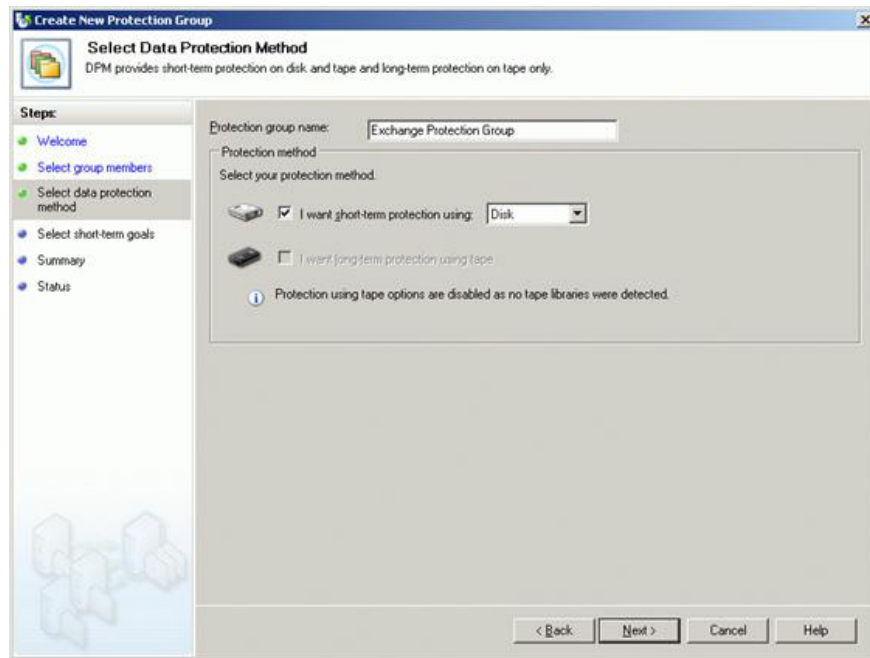


Figure 15: Choose a data protection method

11. On the **Specify Exchange Protection Options** page, check the **Run Eseutil** checkbox to check data integrity (Figure 16). This option uploads a consistent check of the backup issue from Exchange Server to DPM server. If you did not copy the eseutil files as mentioned in step 7, an error will appear here (Figure 17). Click **Next**.

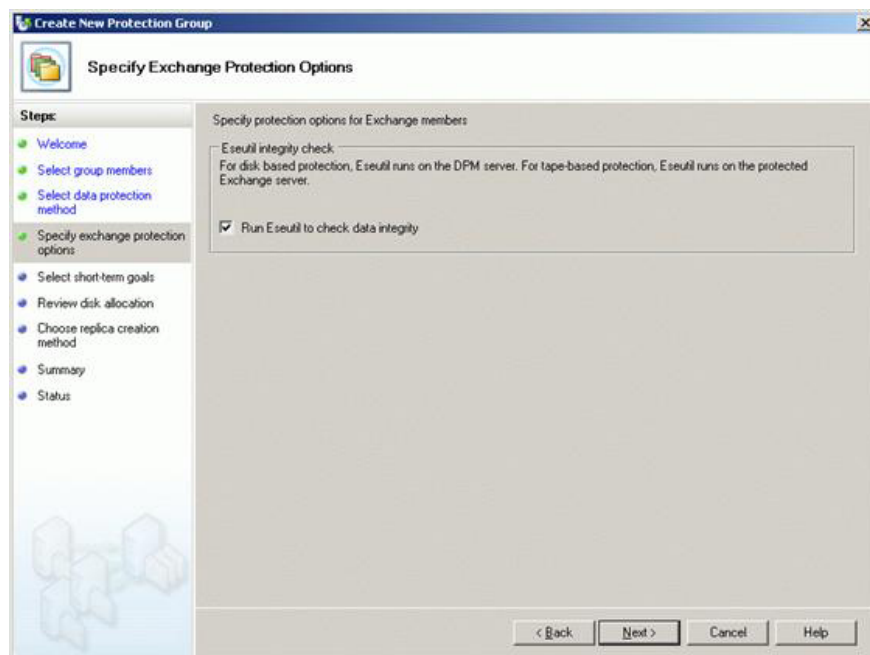


Figure 16: Exchange protection options

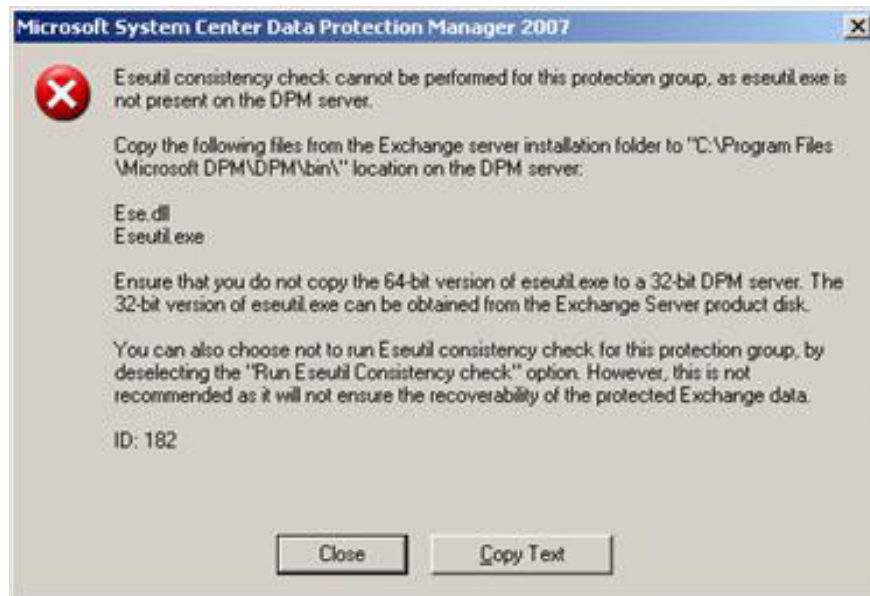


Figure 17: Error

12. On the **Specify Short-Term Goals page** (Figure 18), select the retention period for data recovery in the **Retention range** box. In the **Synchronization frequency** section, select the frequency of the backups or to configure DPM to perform a quick backup before each restore point is scheduled. To change the work schedule schedule for the data source, click **Modify** next to the desired data source. Select the desired number and the days of the week (Figure 19) then click **OK** . Click **Next** .

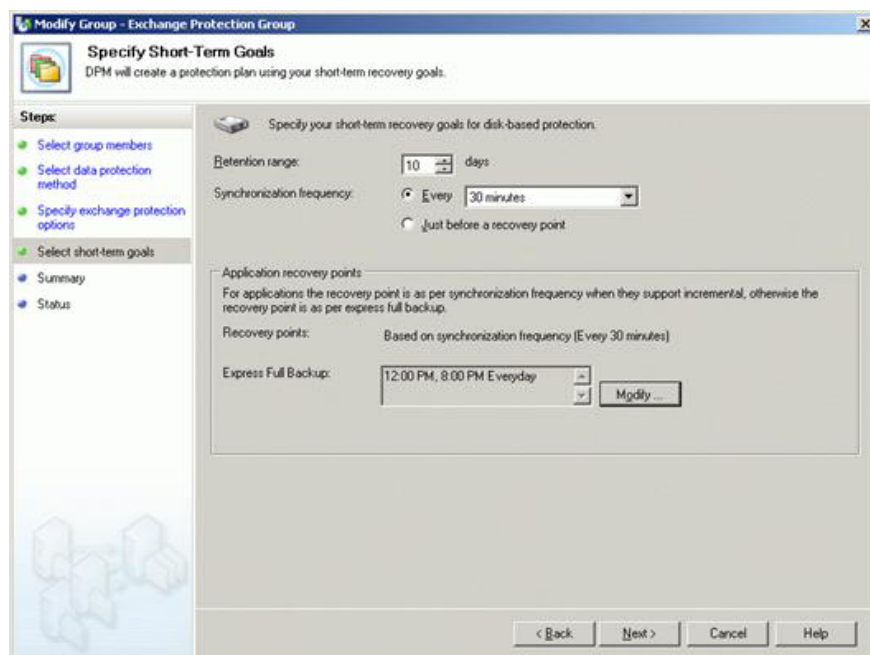


Figure 18: Short-Term Goals

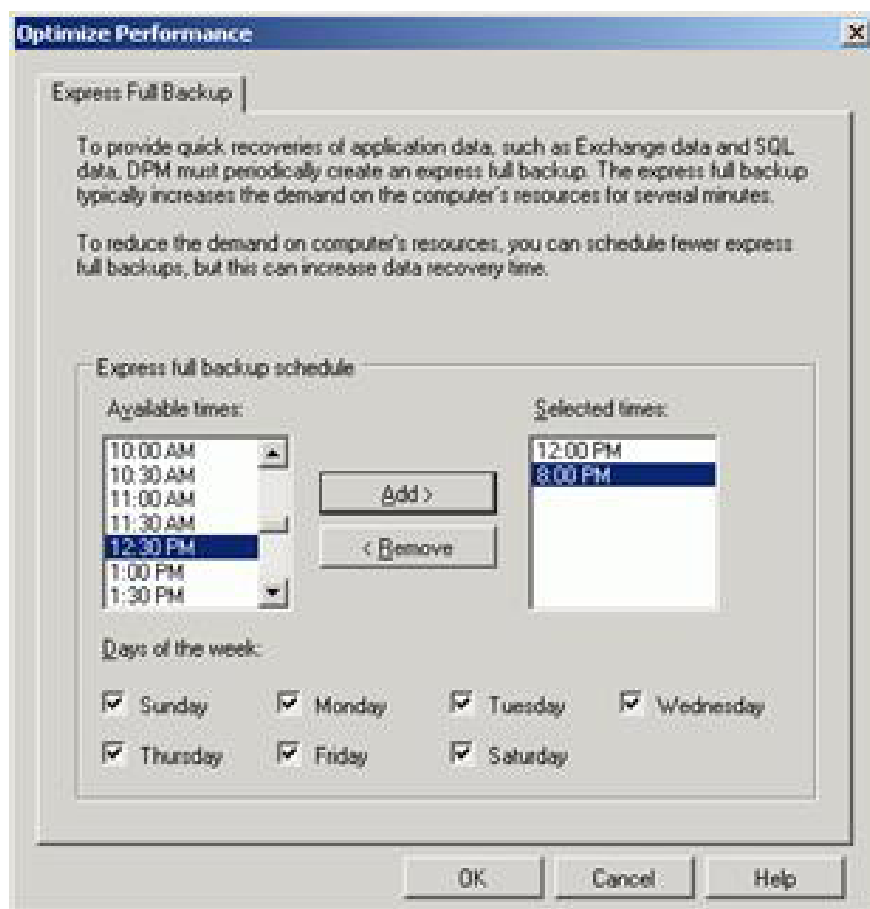


Figure 19: Quick backup schema

13. DPM will display recommended disk locations (see Figure 20). This step allows you to determine how many storage disks will be used to protect that data source. You should specify the drive to copy DPM larger than the expected amount in each data source may increase in the short term. To determine the storage space, do one of the following: To accept the recommended locations, click **Next** . To change the recommended location, click **Modify** , adjust the location (Figure 21), click **OK** and then click **Next** .

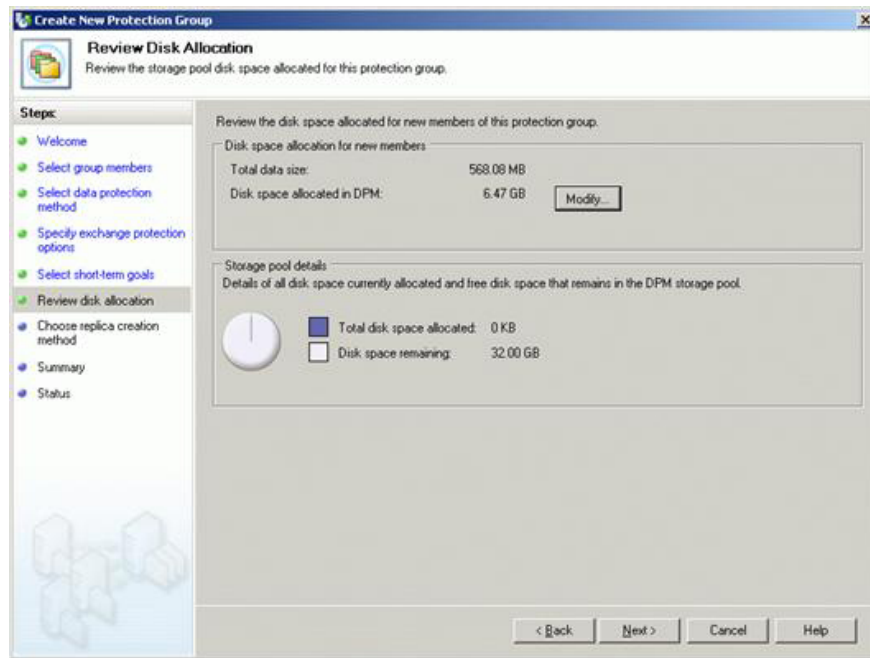


Figure 20: Disk location

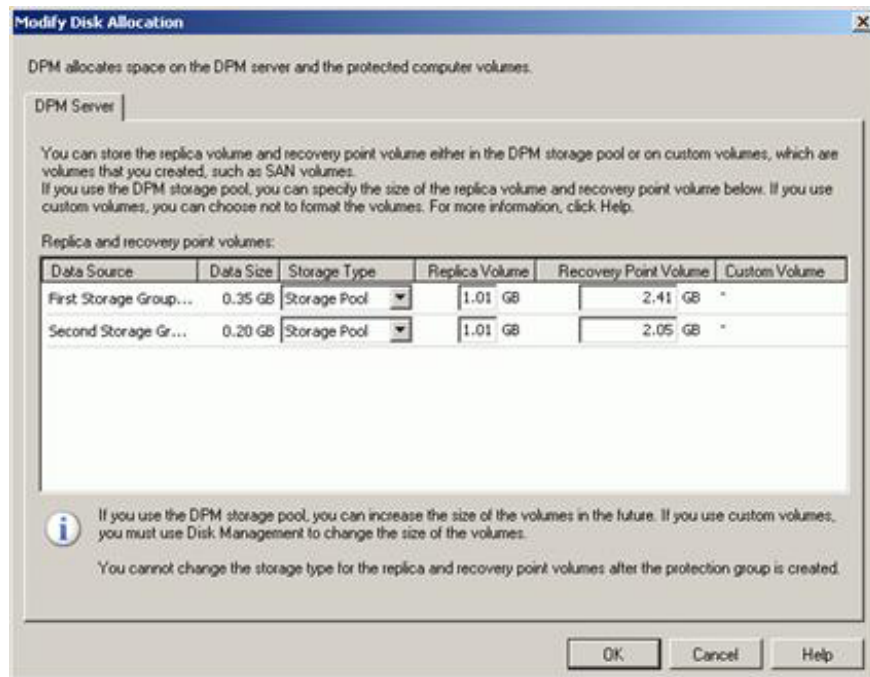


Figure 21: Changing the disk location

14. On the **Choose Replica Creation Method** page (Figure 22), select the time when you want the DPM to perform the initial data backup and click **Next**.

- Select the **Automatically** option for DPM to recreate data throughout the network. Select **Now** so that DPM can immediately start copying data from the computers you are protecting to the DPM server, select **Later** to

start the original copy at a later time if you want to schedule only run at times when network traffic is low.

- Select **Manually** to use for tape, USB, or mobile device storage to transfer data to DPM server.

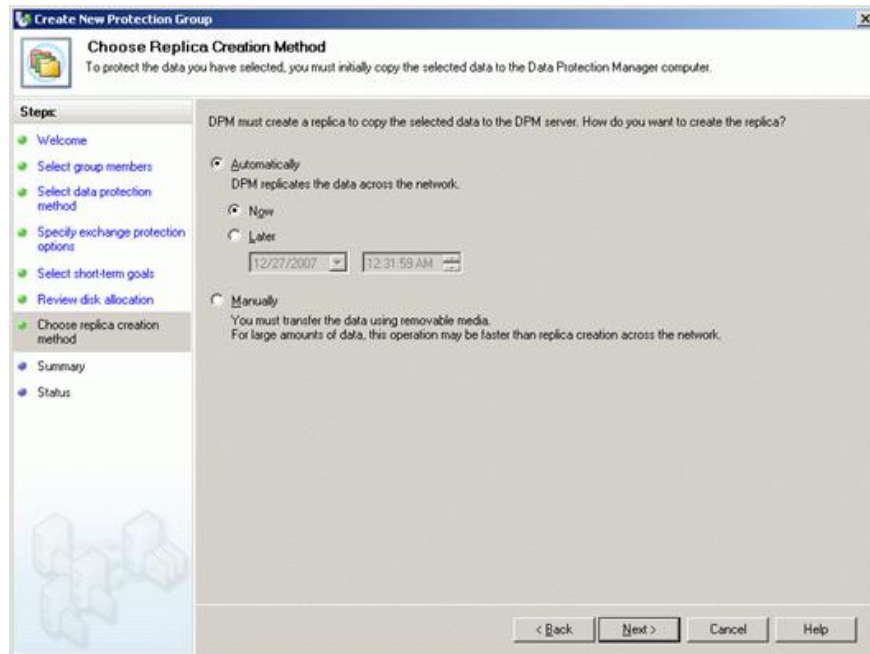


Figure 22: Copy method

15. In the **Summary** window (Figure 23), review the tasks that DPM is set to perform security group creation and then click **Create Group** . Review the confirmation page (Figure 24) and click **Close** .

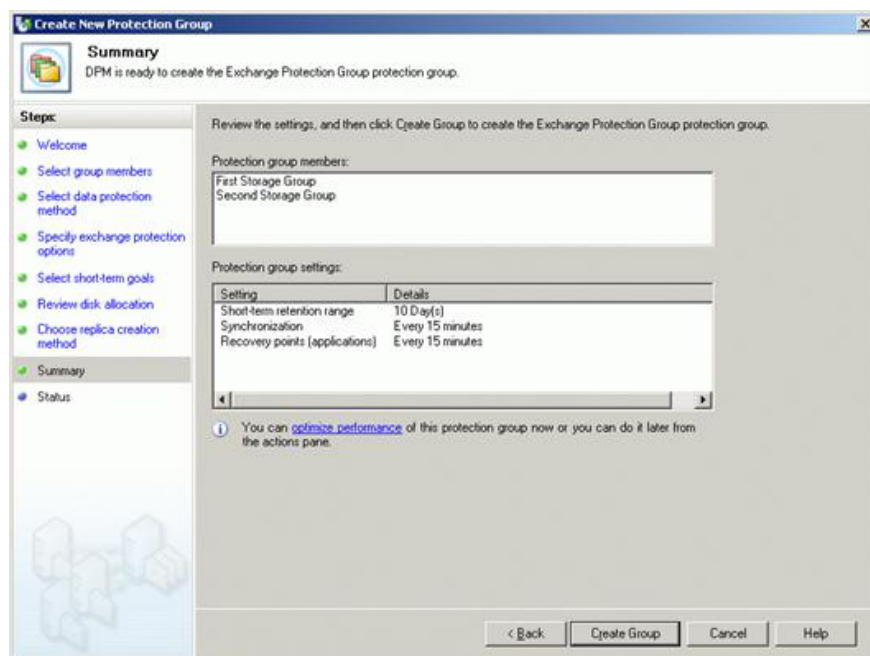


Figure 23: Summary

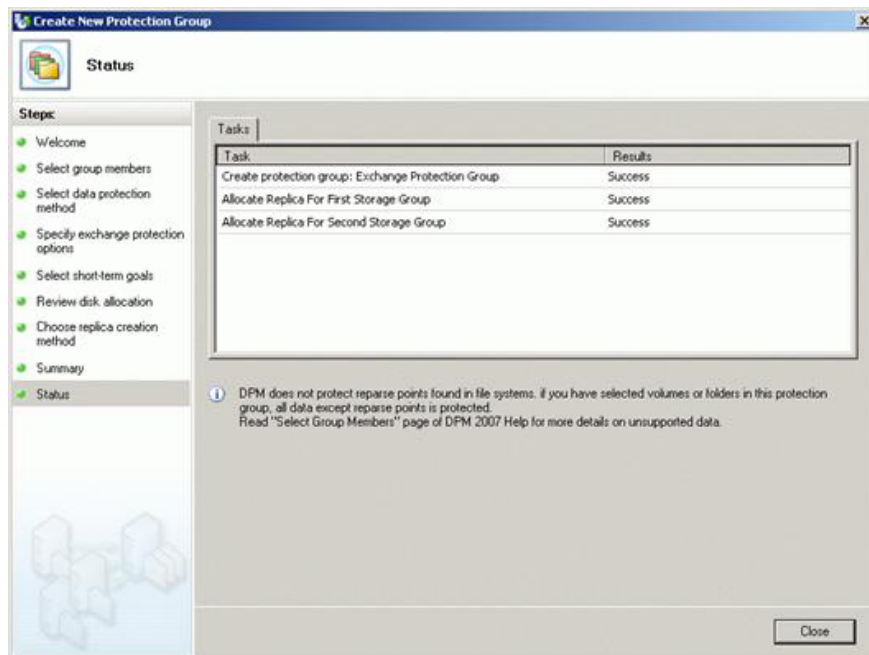


Figure 24: Protection group status

DPM will immediately create the first copy of the storage groups (Figure 25) and will show the protection status as **OK** if it succeeds (Figure 26).

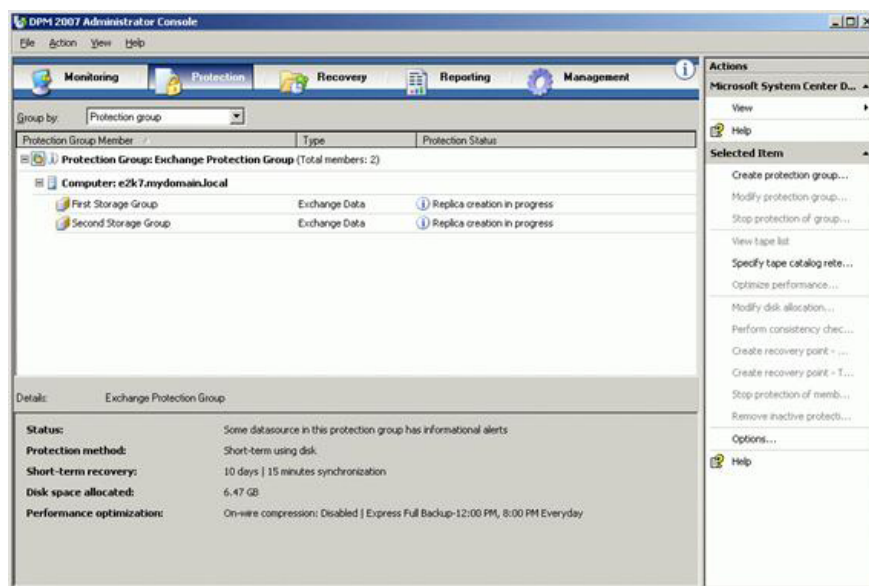


Figure 25: Copy of Exchange in progress

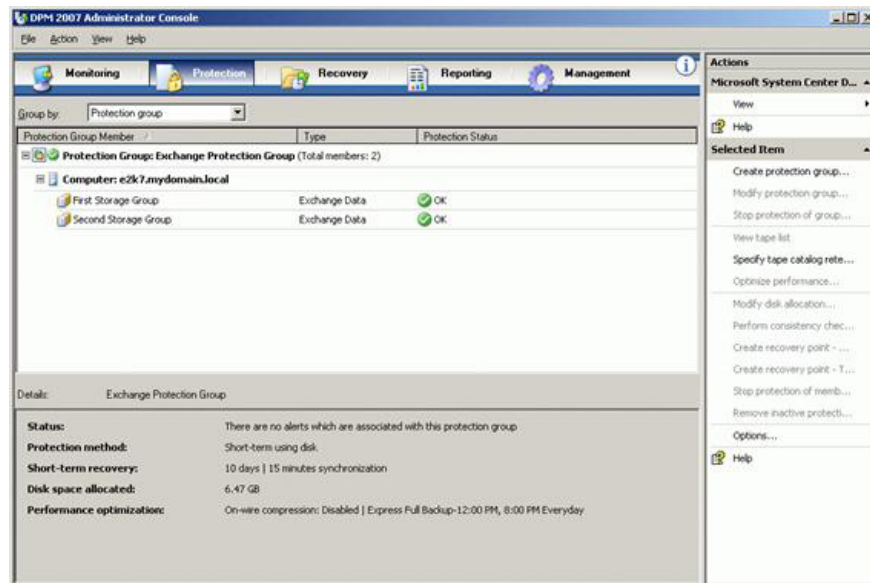
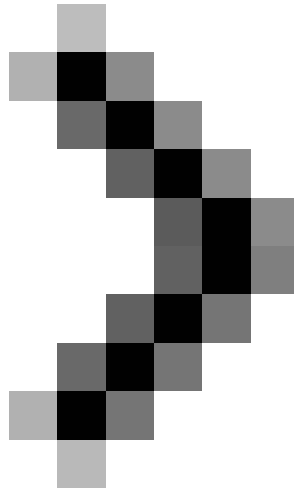


Figure 26: Exchange protection group

Conclude

Although configuring Data Protection Manager 2007 and creating the Exchange Protection Group is not difficult, the agent installation requires you to restart your production servers, so it needs to have a good plan in advance.

In the next part of this series, we will take a closer look at configuration options and introduce the backup process in more detail.



Backup for Exchange Server with DPM 2007 (Part 3)

You finished reading the article "**Backup for Exchange Server with DPM 2007 - Part 2: Configure DPM 2007**" edited by the [TipsMake](#) team. We hope this article has provided you with many useful tech tips and tricks. You can search for similar articles on tips and guides. Thank you for reading and for following us regularly.