

Automatically update drivers on your Windows computer with SnailDriver.

Among the various driver update software programs available for Windows computers today, SnailDriver stands out as a formidable competitor. To automatically update drivers on your Windows computer using SnailDriver, you need to install the software following these instructions.

Currently, users have many options for automatically updating drivers on their computers, such as Driver Booster 3 or Drive Easy. However, there is another software that is not as well-known as Driver Booster 3, but still provides the latest and best drivers for installation on various computer models: SnailDriver. To automatically update drivers on your Windows computer using SnailDriver, please download the software following these instructions.

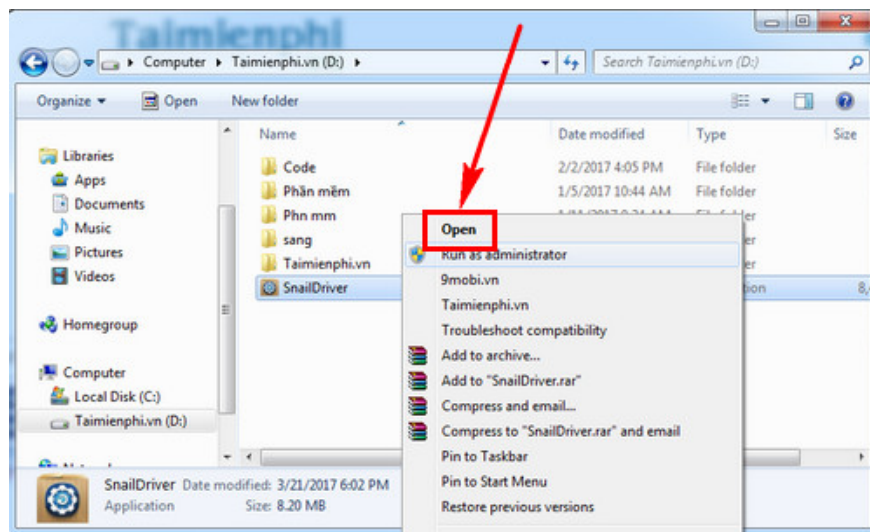
Automatically update drivers on your Windows computer with SnailDriver:

Download SnailDriver here: [Download SnailDriver](#)

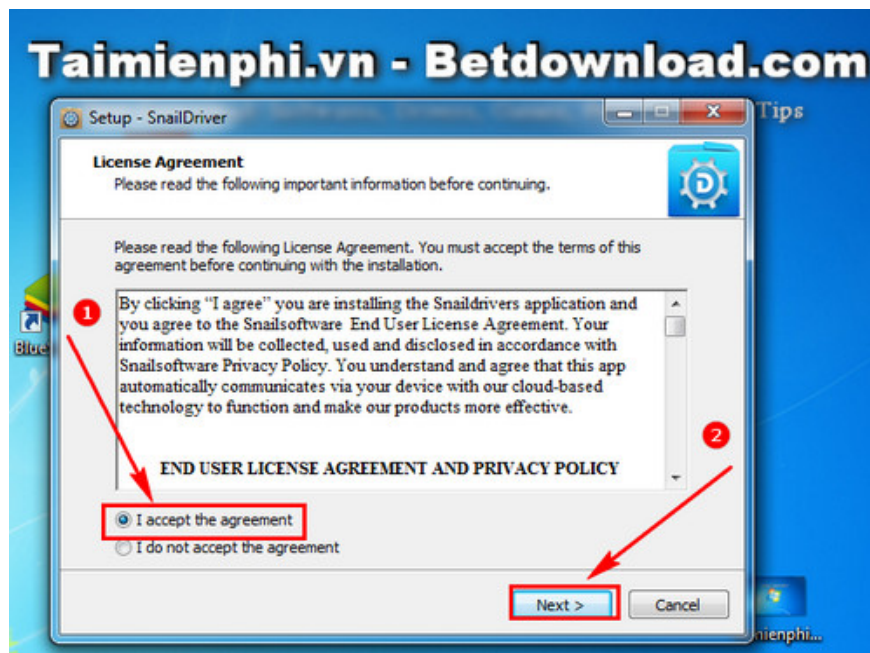
Step 1: Access the download link above and click **Download** to download SnailDriver.



Step 2: After downloading SnailDriver, open the folder containing the **installation** file, right-click, and select **Open**.

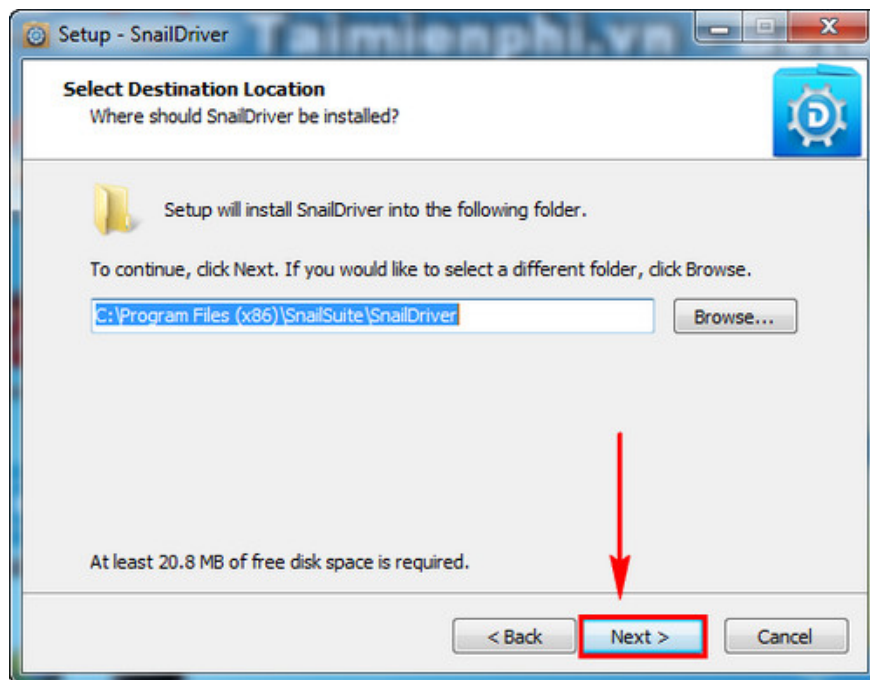


Step 3: Select "I accept the agreement" and press "Next".



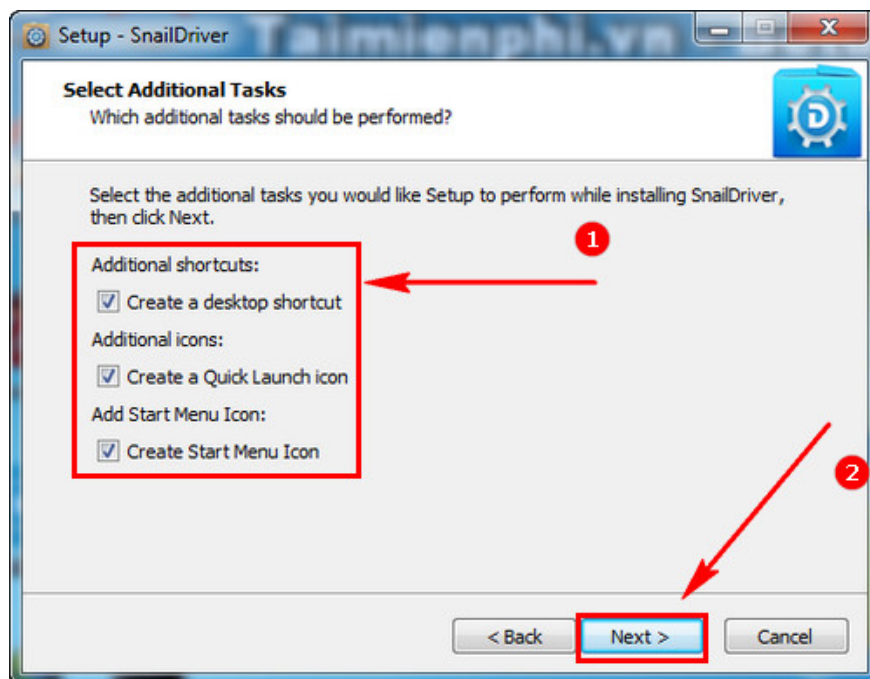
Step 4: You can save SnailDriver to the default C drive, or click **Browse** to select a different folder.

Press Next.

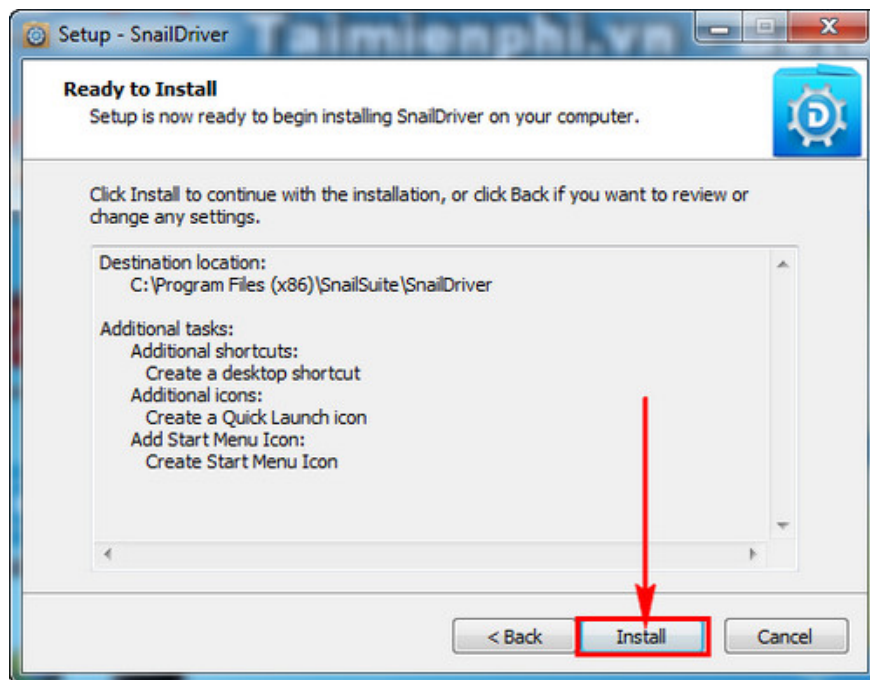


Step 5: Check the boxes to make the SnailDriver icon appear on your Desktop.

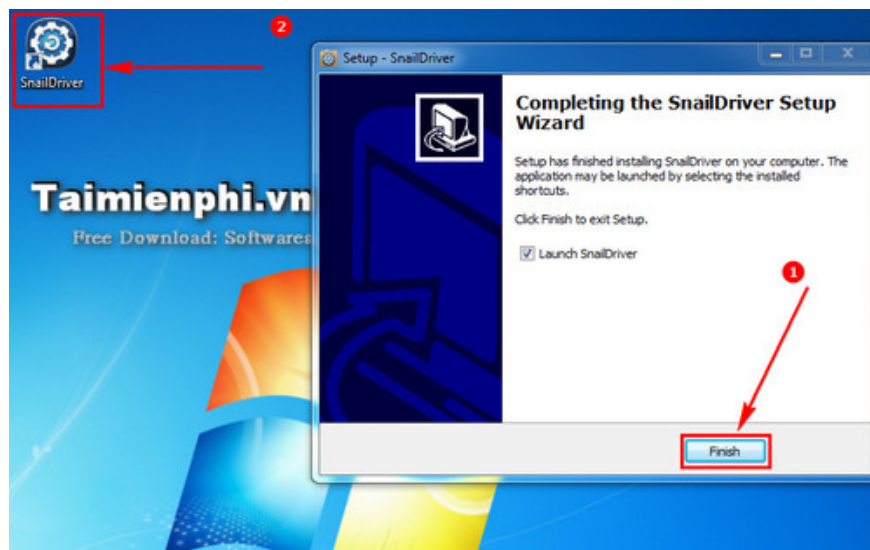
Press Next.



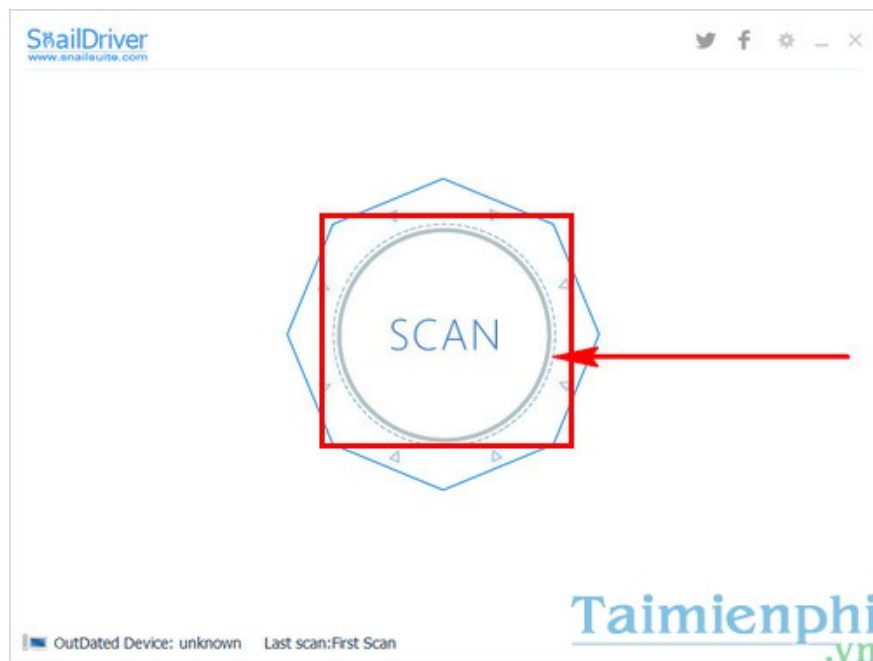
Step 6: Click **Install** to begin the installation.



Step 7: After the installation is complete, click **Finish** and open the SnailDriver software.



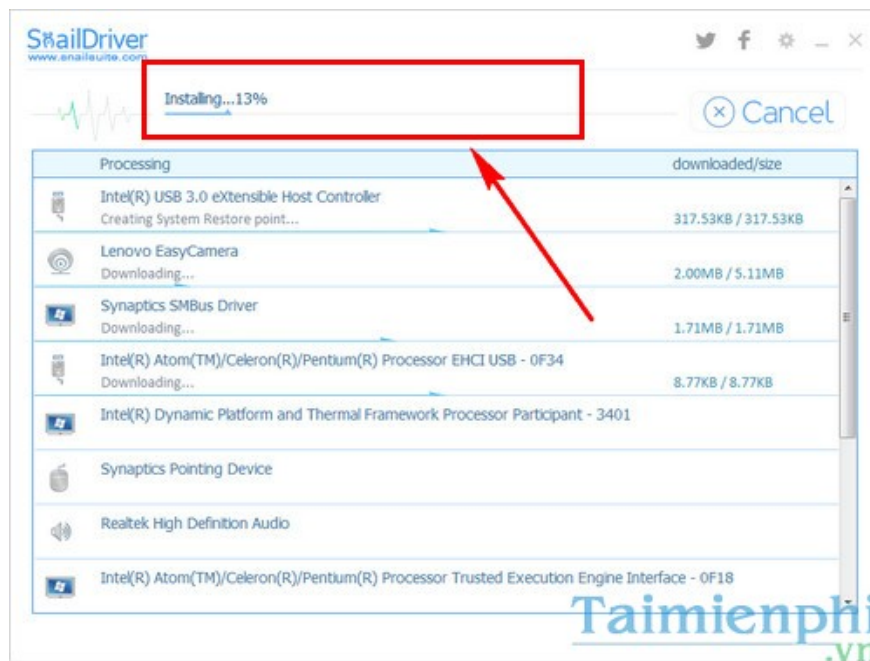
Step 8: After opening the SnailDriver software, to scan for missing drivers on your computer, click **Scan**.



Step 9: Once missing drivers are detected, click **Update** to allow the software to automatically update the drivers for your computer.



Please wait a moment for the installation process to complete.



The above is a detailed guide on how to install SnailDriver and automatically update drivers on your computer using SnailDriver software.

If you want to use a different software, you can refer to the method of updating drivers using Driver Easy . This is also one of the effective tricks to automatically update drivers on your computer. You can use these two software programs in parallel to update all the drivers on your computer. It is very possible that updating drivers with Driver Easy will find missing drivers when updating with SnailDriver and vice versa.

You finished reading the article "**Automatically update drivers on your Windows computer with SnailDriver.**" edited by the [TipsMake](#) team. We hope this article has provided you with many useful tech tips and tricks. You can search for similar articles on tips and guides. Thank you for reading and for following us regularly.