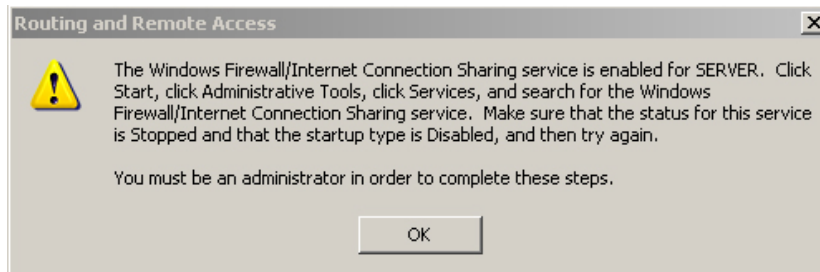


Are you confident with your Network Administration knowledge P6

Please read our below knowledge and network admin questions. The question set will have 12 sentences for you to try.

1. Question 1. The characteristics of offline mail are:
 1. Internal mail server must operate continuously (24/24)
 2. Host the mail of the service provider
 3. Internal mail server does not need to run continuously
 4. Sentences b and c are correct
2. Question 2. Are you a network administrator for a company or company that uses 3 different netIDs, how can you make these 3 netIDs access data together?
 1. In the network configuration 2 server Routing and Remote Access
 2. In the network system, configure 1 server Routing and Remote Access
 3. In the network configuration 3 server Routing and Remote Access
 4. In the network configuration 4 servers Routing and Remote Access
3. Question 3. You are a network administrator for a company or company you use 2 different NetIDs, you want to build a Routing and Remote Access server in the network, what do you need to implement to meet the needs? upper bridge?
 1. In the network system, it is necessary to install a server operating system and install at least 3 NICs
 2. At least 2 server operating systems are installed in the network and at least 2 NICs are attached
 3. In the network system, it is necessary to install a server operating system and attach a NIC
 4. In the network system, it is necessary to install a server operating system and install at least 2 NICs
4. Question 4. You are the network administrator for a company. In a network system using 3 different NetIDs, with 3 Routing and Remote Access enabled, you need to configure dynamic routing on these 3 servers, at the Routing and Remote Access screen you select New Routing Protocol, of the General tab, then select RIP version 2 in the New Routing Protocol dialog box, please tell me the next steps?
 1. Select start RIP
 2. Select RIP then add an interface to RIP
 3. Remove all static routes from the routing table of the Routing and Remote Access service
 4. Select properties on interface and enable RIP
5. Question 5. You are the network administrator of a company, your company uses two different NetIDs called subnetA and subnetB. You enable Routing and Remote Access so that these two NetIDs can access each other, but a user in the subnetB notifies you that he cannot access the subnetA. How do you use the Routing and Remote Access to allow users on the subnetB to access the subnetA?
 1. On machines at the subnetB only default the gateway to Routing and Remote Access machines
 2. At Routing and Remote Access, select properties on the interface and enable RIP
 3. Select properties on the server name, select the IP tab, check the box Enable IP routing
 4. Select properties on the server name, select the IP tab, uncheck the box Enable IP routing

6. Question 6. You are the network administrator for a company, you want to see information about remote routing configuration. What command do you use below?
 1. At the command prompt enter the Arp command
 2. At the command prompt enter the Nbtstat command
 3. At the command prompt enter the Netsh command
 4. At the command prompt enter the Netstat command
7. Question 7. You are the network administrator for a company, you want to deploy a new NetID and you want to, these two NetIDs can access back and forth to copy data together, you activate the service Routing and Remote Access, however, when you right-click on the Server name and select Configure and Enable Routing and Remote Access, you get the following dialog box:



How can you enable Routing and Remote Access service?

1. In services of the machine that installs the Routing and Remote Access service, disable the windows firewall / internet connection sharing service (ICS)
 2. In services of the Routing and Remote Access service installation machine, enable windows firewall / internet connection sharing service (ICS)
 3. Select Add / Remove Windows Components and reinstall Routing and Remote Access service
 4. On Routing and Remote Access screen, right click on Routing and Remote Access and select Add Server .
8. Question 8. To perform reverse resolution for machines of network 192.168.20.0 we need to define the zone named
 1. 192.168.20.in-addr.arpa
 2. 192.168.20.0.in-addr.arpa
 3. 20,168,192.in-addr.arpa
 4. 0.20.168.192.in-addr.arpa
 9. Question 9. To set the IP address for the eth0 network card, use the ifconfig command, which command must we execute?
 1. ifconfig eth0 172.16.10.11/255.255.255.0
 2. ifconfig eth0 172.16.10.11 mask 255.255.255.0
 3. ifconfig eth0 172.16.10.11 netmask 255.255.255.0
 4. ifconfig eth0 172.16.10.11 mask 255.255.255.0
 10. Question 10. Which port does the SMTP service run?
 1. 25
 2. 26
 3. 30
 4. 54
 11. Question 11. You are the network administrator for a company that uses 2 different NetIDs called subnetA and subnetB, you install and configure on subnetA a DHCP server, on subnetB a DHCP server, so that the clients in 2 NetID receives the IP address from these two DHCP servers. However, a user of the subnetA told you that his computer named US05 could not access the resources of the subnetB machines. You

check that all computers on the subnetA have the same situation, you go to the US05 and discover that the machine is using the IP address 169.254.10.28. How do you make all subnetA machines accessible on the network and these problems will no longer be repeated in the future.

1. Configure all alternative IP configuration users on the Alternative Configuration tab
 2. Installing DHCP Relay Agent on SubnetA and SubnetB
 3. Configure all users using static IP
 4. Configure all users at subnetA using static IP
12. Question 12. You are the web server administrator in the company. Your company has a website so that all clients on the local network can access this website. How do you configure the Web Server to prevent all user traffic on the internet when accessing internal resources except http traffic.
1. Enable TCP / IP filtering on the Web Server and only allow traffic to go through TCP port 143
 2. Enable TCP / IP filtering on Web Server and only allow traffic to go through TCP port 25
 3. Enable TCP / IP filtering on Web Server and only allow traffic to go through TCP port 110
 4. Enable TCP / IP filtering on Web Server and only allow traffic to go through TCP port 80

You finished reading the article "**Are you confident with your Network Administration knowledge P6**" edited by the [TipsMake](#) team. We hope this article has provided you with many useful tech tips and tricks. You can search for similar articles on tips and guides. Thank you for reading and for following us regularly.