

Android theme variation on the theme of Beauty and monsters movies

Beauty and the beast has officially opened in theaters on March 17th. This is a film featuring the beautiful Emma Watson, remade by Disney based on the 1991 animated film of the same name. The following article will show you how to transform the theme on an Android device by theme. movie Beauty and the Beast.

Beauty and the beast has officially opened in theaters on March 17th. This is a film featuring the beautiful Emma Watson, remade by Disney based on the 1991 animated film. If you're a Disney fan, let's transform the theme on your Android device. movie theme The beauty and the monster are hot.

The themes mentioned in the article:

- I. Theme Bookshelf of Belle
- II. Purple rose theme
- III. Rose theme of Prince Adam
- IV. Gaston Theme

I. Theme Bookshelf of Belle



Prepare:

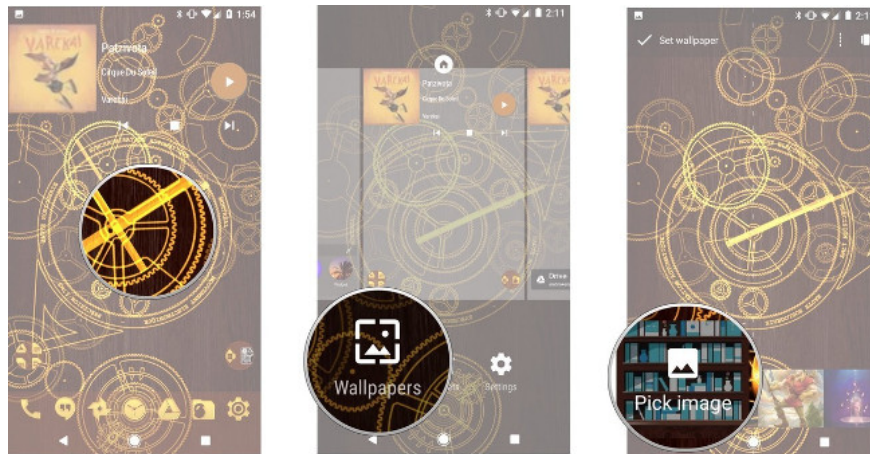
1. Download Belle's Bookshelf bookshelf (Belle's Bookshelf)
2. Icon Whicons package
3. 1Weather widget
4. KWGT Pro application
5. A file manager application on your phone to move the Belle Music Widget Preset File into Folder Widget.

Request:

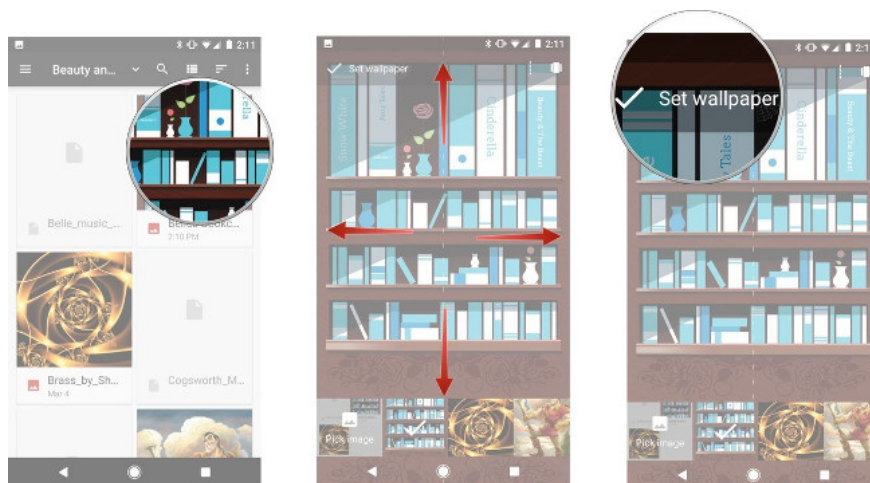
Your device should use Nova Launcher to be able to use this Theme.

1. Set Theme book prices and weather widgets

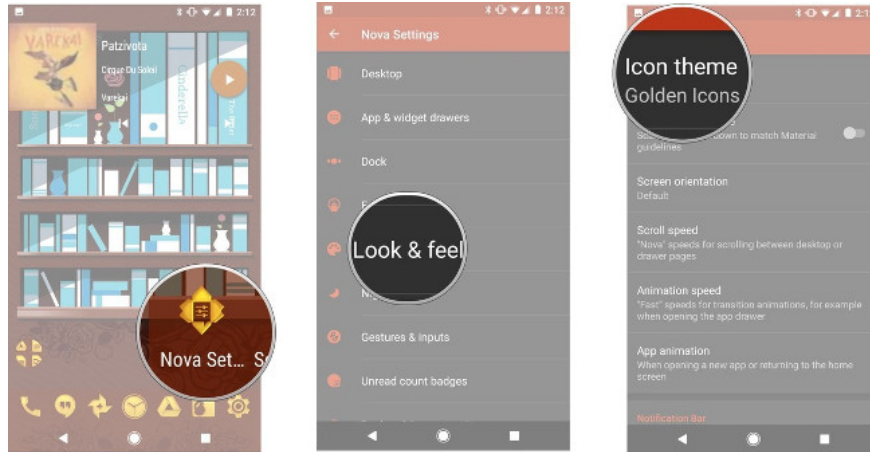
1. Keep the background image on the device's main screen until options appear.
2. Select **Wallpapers**> **Pick Image** .



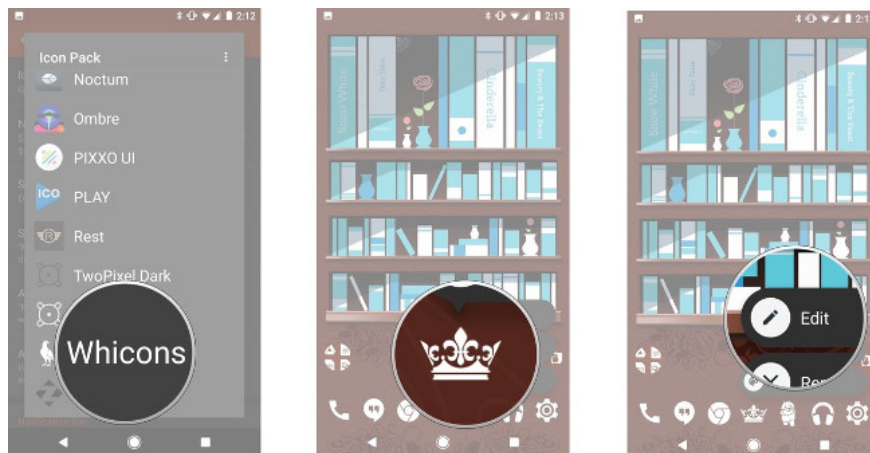
1. Then select Belle's bookshelf image that you downloaded above.
2. Adjust the background image to be balanced, paying attention not to cut the top of the bookshelf.
3. Select **Set Wallpaper** .



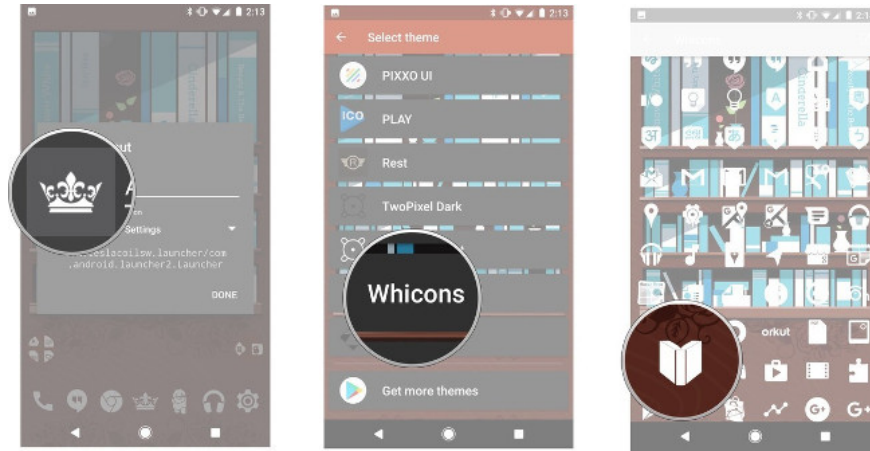
1. Go to **Nova Settings**> **Look & Feel**> **Icon Themes** .



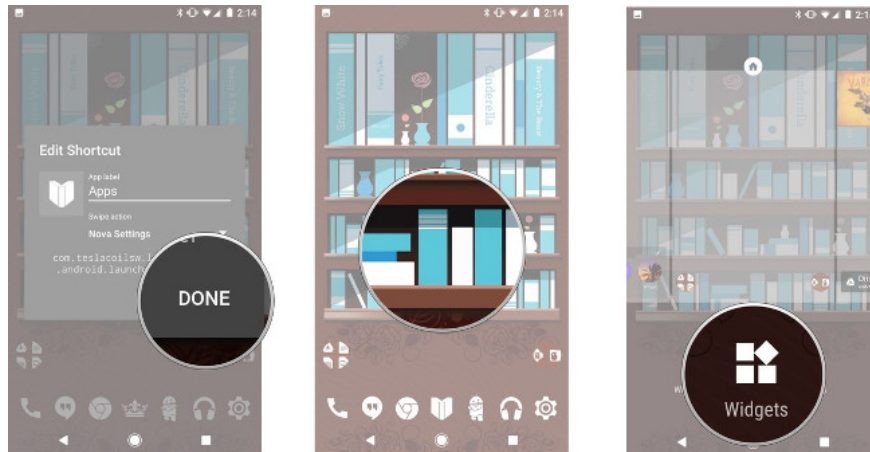
1. Choose **Whicons** .
2. Go back to the main screen and then hold the **App Drawer** icon until the options appear.
3. Select **Edit** .



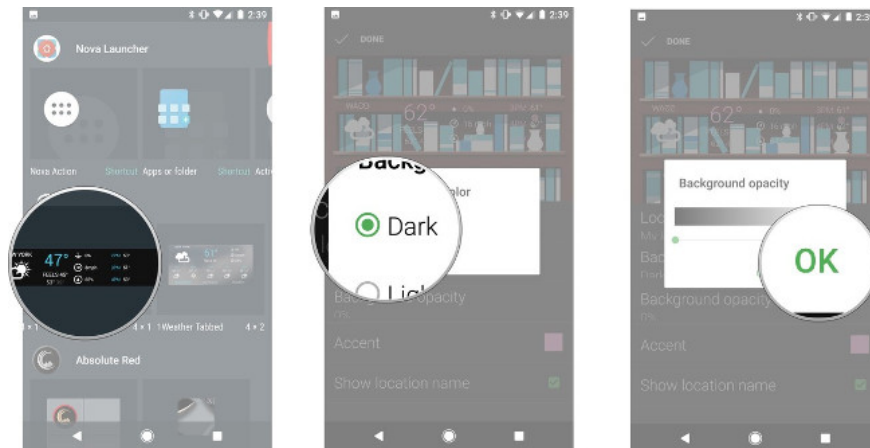
1. Click on the icon box to change the icon.
2. Choose **Whicons** .
3. Select the **G** symbol, then select **Google Play Books** and then select the icon with the open book (as shown in the picture).



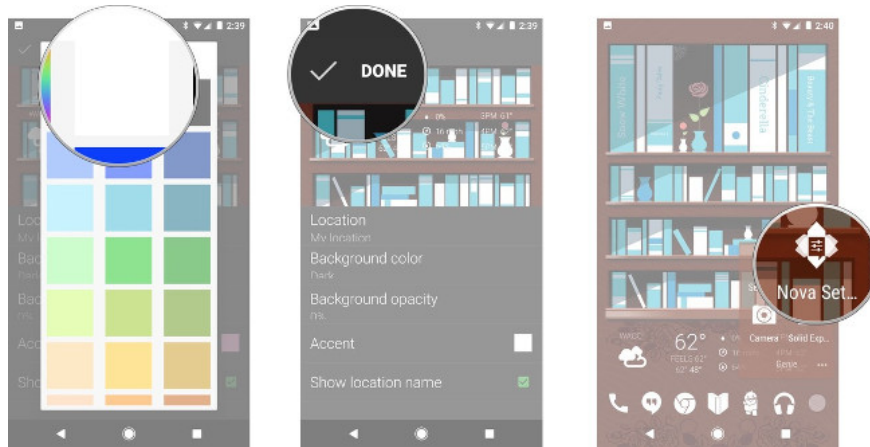
1. Click **Done** to confirm the changes.
2. Continue to keep the wallpaper on the device's main screen until options appear.
3. Select **Widgets**.



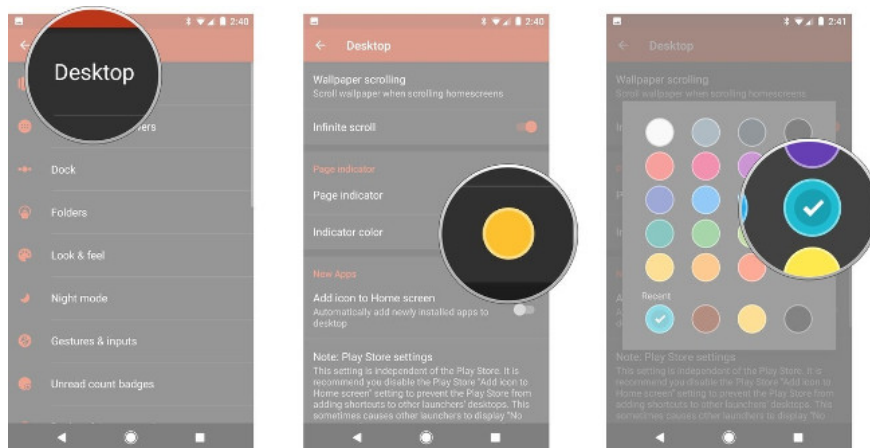
1. Hold and drag the **1Weather Compact** widget to the bottom of the bottom bookshelf on the bookshelf wallpaper.
2. In the **configuration** window, change the **Background** to black by selecting **Dark**.
3. Drag the **background opacity** to **0%**.



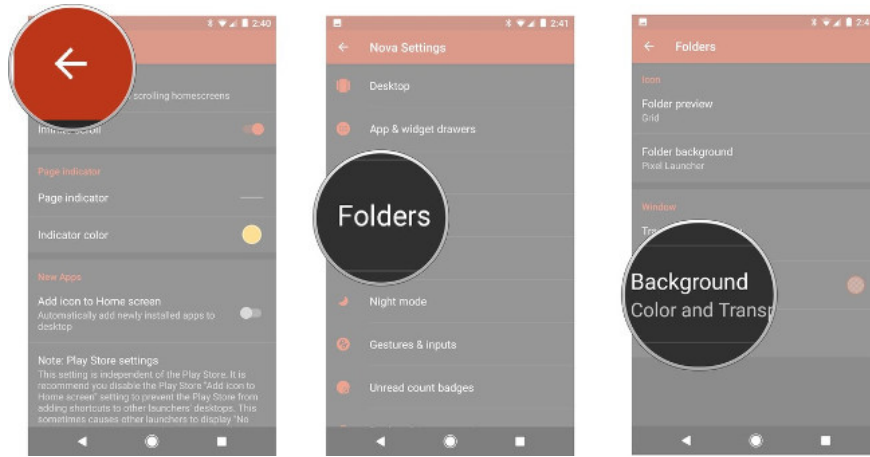
1. Change the **Accent** color to white.
2. Click **Done**.
3. Continue to open **Nova Settings**.



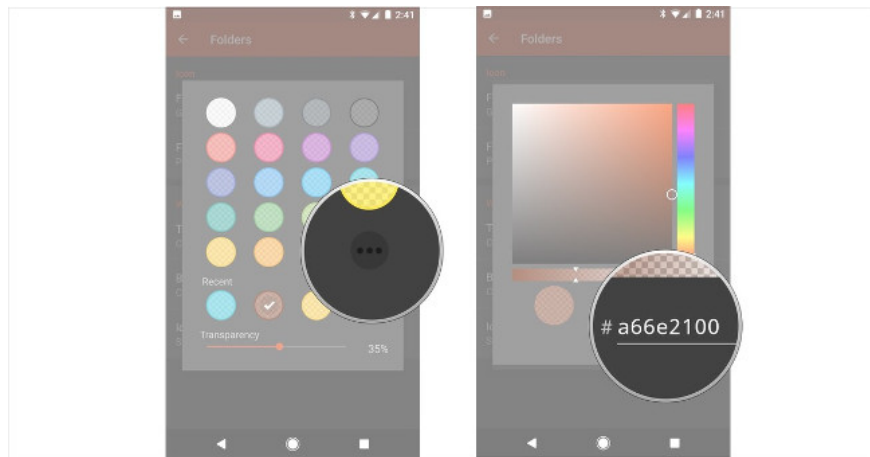
1. Go to **Desktop** .
2. Click on the **Color indicator** item.
3. Select blue (as shown in the picture).



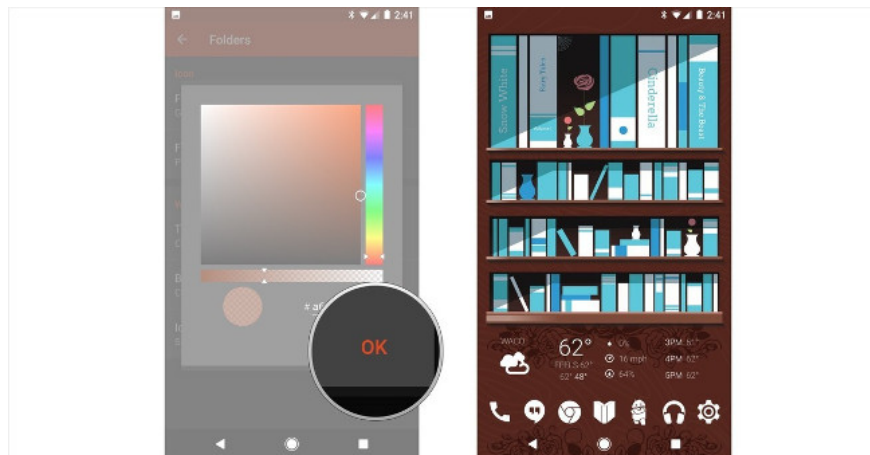
1. Return to **Nova Settings** .
2. Select **Folders** .
3. Select **Background** .



1. Click on the custom icon (there are 3 black dots).
2. Change to color # a66e2100 (type to change).

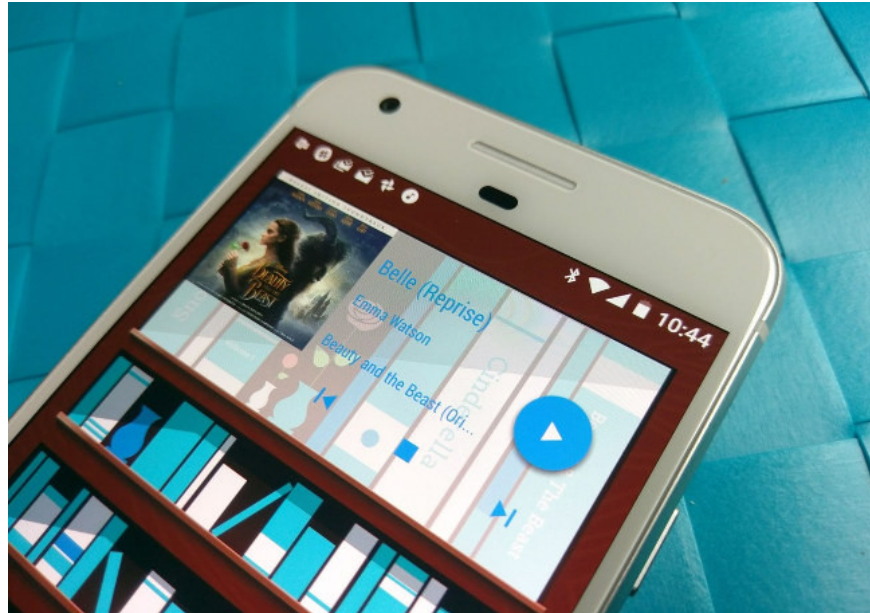


1. Click **OK**.
2. Return to the lock screen.



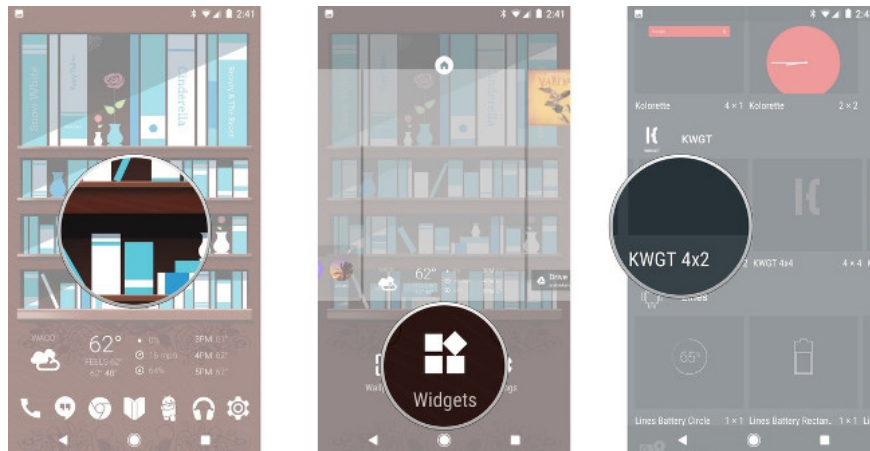
So now we have Belle's book-shaped theme.

2. Set the Belle's Music Widget

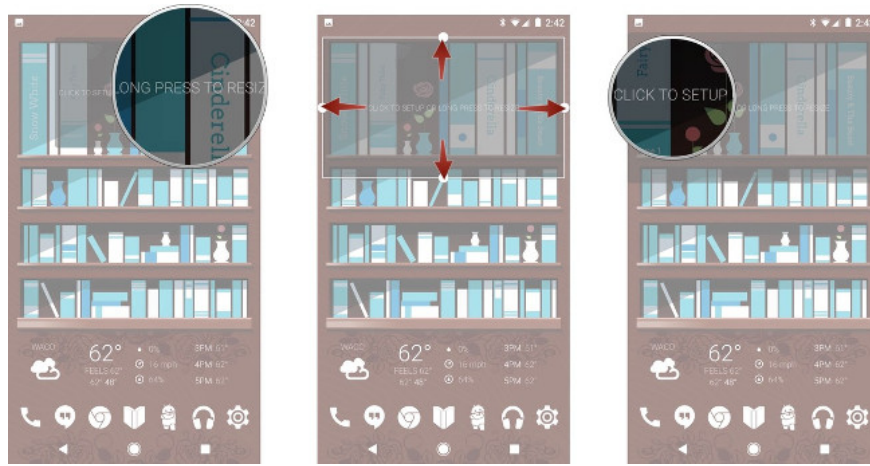


To set a Music widget to fit the bookshelf position at the top of the background image. First we need to download File Belle Music Widget Preset to the device and transfer the File to the Widgets folder on your device using the file manager application. Then we do the following:

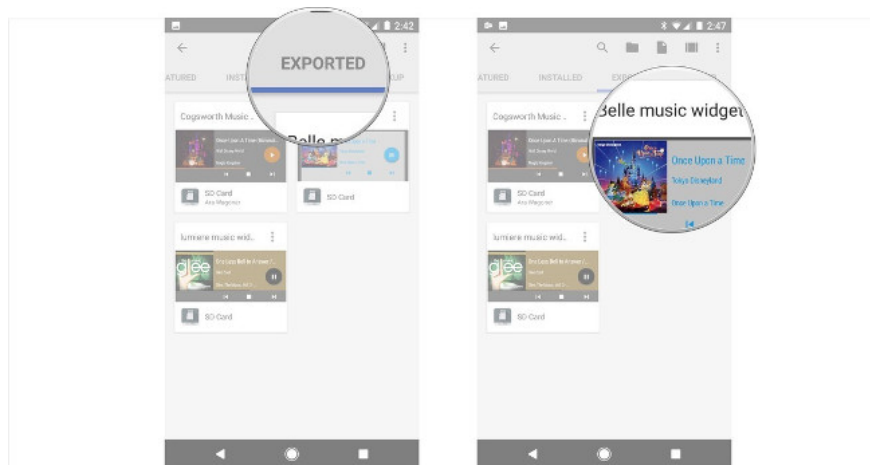
1. Keep the background image on the device's main screen until options appear.
2. Select **Widgets**.
3. Hold and drag the **4x2 KWGT** widget to the top shelf of the bookshelf wallpaper.



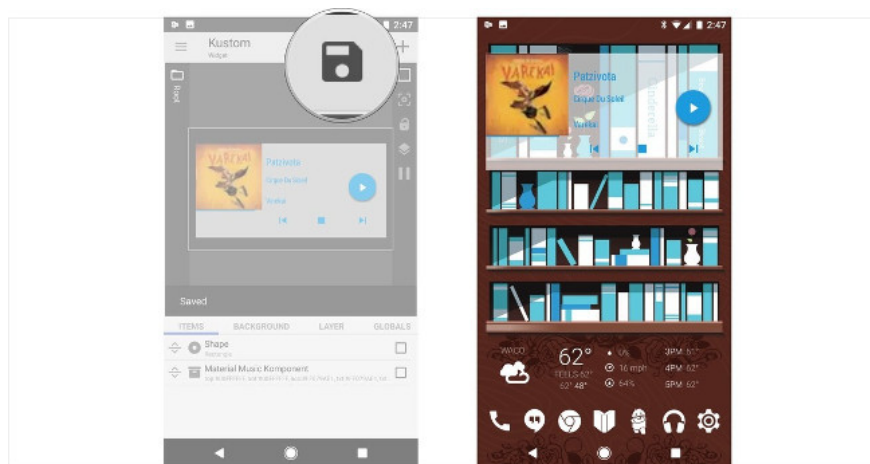
1. Press and hold **Widget** until the **menu** appears.
2. Select **Resize** and adjust how the **Widget** covers the entire bookshelf.



1. Then click on **Widget** to adjust the settings of that Widget.
2. Select Tab **Exported** at the top of the screen.
3. Click **Belle Music Widget** .



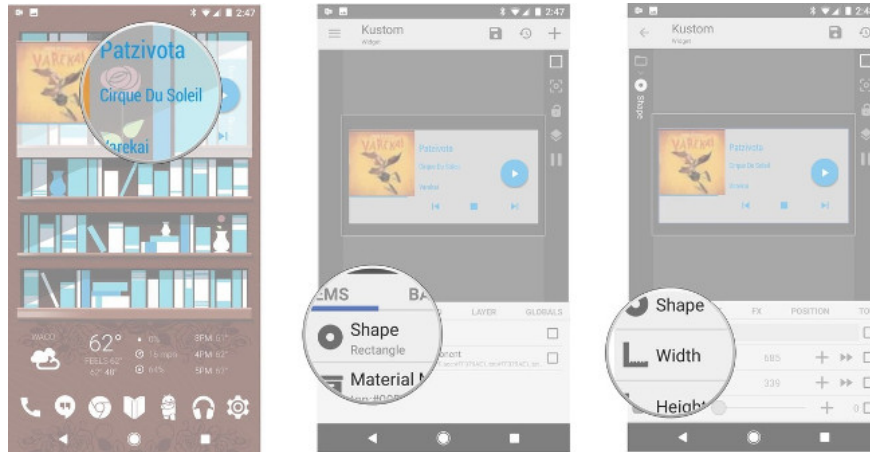
1. Click the **Save** icon to have a floppy disk image to save.
2. Return to the main screen.



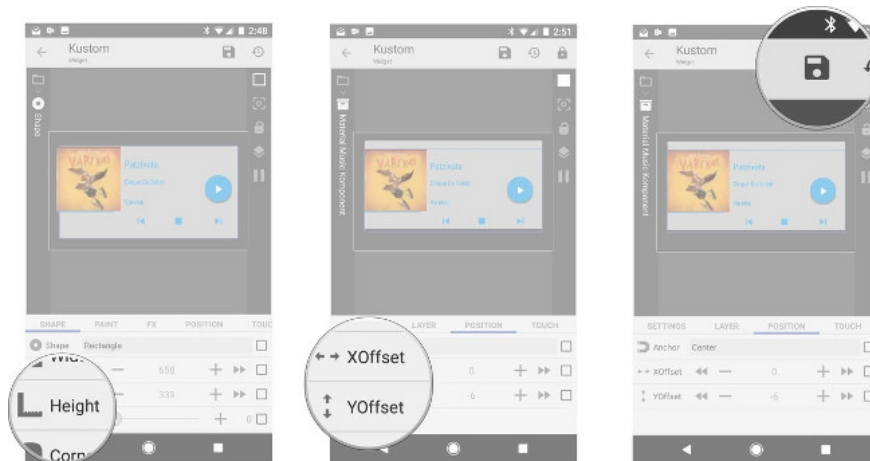
Now we have the Preset Widget to play music at the bookshelf at the top, the next thing to do is to adjust the widget to be more beautiful. Here are 3 adjustments you need to make:

Adjust the white background of the widget to match the book price:

1. Click on the word display on the **widget** to open the KWGT edit.
2. Select the **Shape** tab at the bottom to edit.

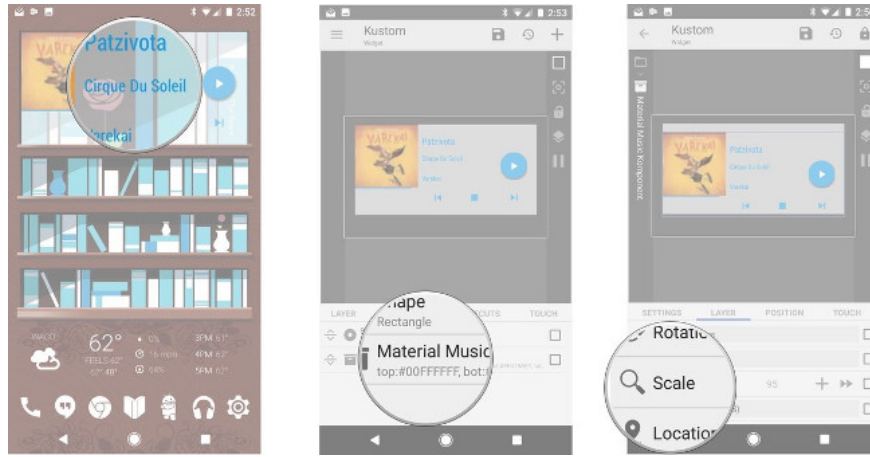


1. There will be options for you to adjust: **Width (Width)** , **Height (Height)** , **YOffset (scroll up and down)** , **XOffset (left and right scroll)** . You should adjust so that the white background of the widget matches the bookshelf. Then click the **Save** icon to have a floppy disk image to save.

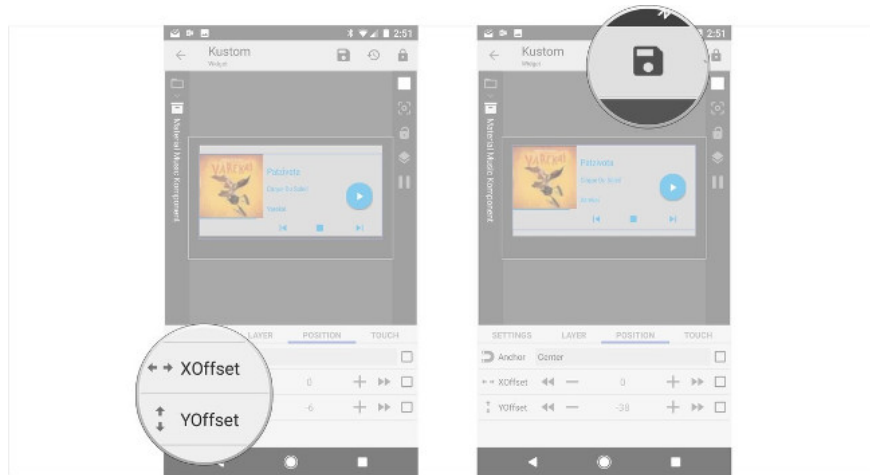


Adjust the display part of the music to match the widget's white background:

1. Click on the word display on the widget to open the KWGT edit.
2. Select the **Material Music Component** tab on the bottom to edit.



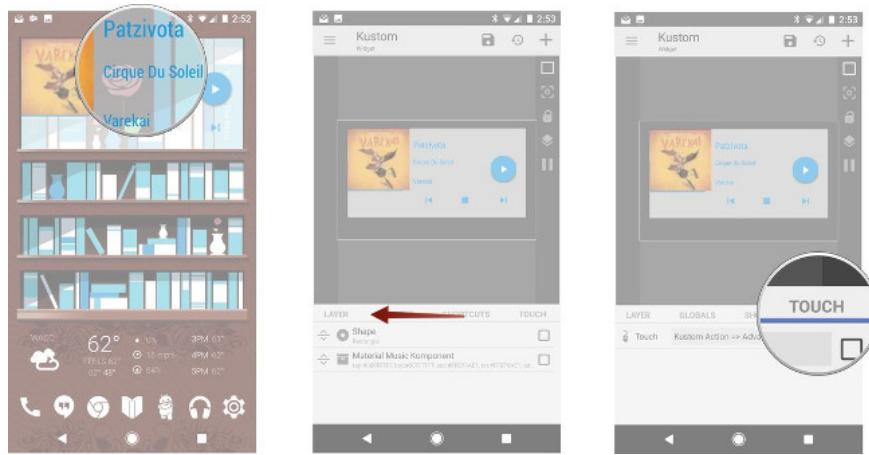
1. Here there will be options for you to adjust: **Scale (Size)** , **YOffset (scroll up and down)** , **XOffset (left and right scroll)** . You should adjust so that the display part of the music is close to the upper left corner of the bookshelf. Then click the **Save** icon to have a floppy disk image to save.



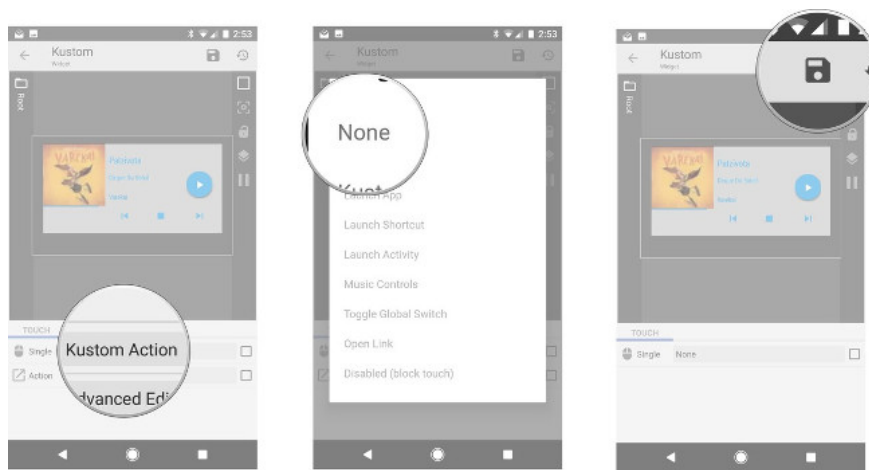
Adjust Widget shortcuts:

After you have edited your Widget as well, please adjust the Widget shortcut to no longer activate the KWGT edit item of the Widget when clicking on the display text on it.

1. Click on the word display on the widget to open the KWGT edit.
2. Select the **Touch** tab on the toolbar.

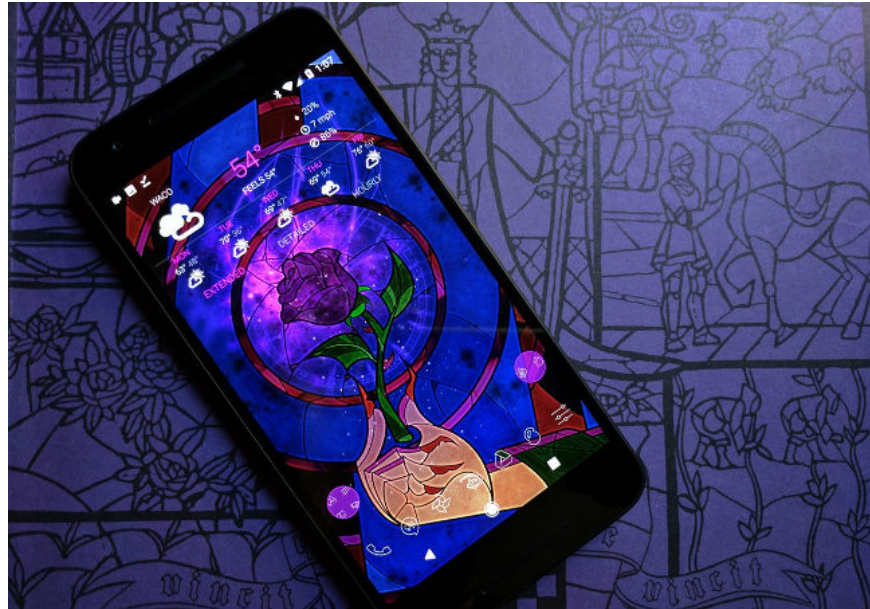


1. Select **Custom Action**> **Advanced Editor** .
2. Select **None** . Then click the **Save** icon to have a floppy disk image to save.



If you want to re-open the KWGT edit item, just go to the KWGT app and open it.

II. Purple rose theme



Prepare:

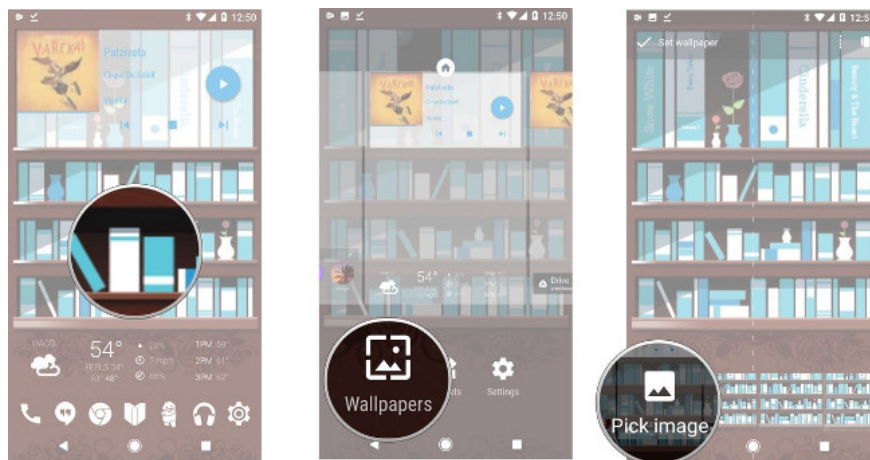
1. Download Rose Flowers (The Rose She Offered)
2. Pack Icon Lines Icon Pack
3. 1Weather widget

Request:

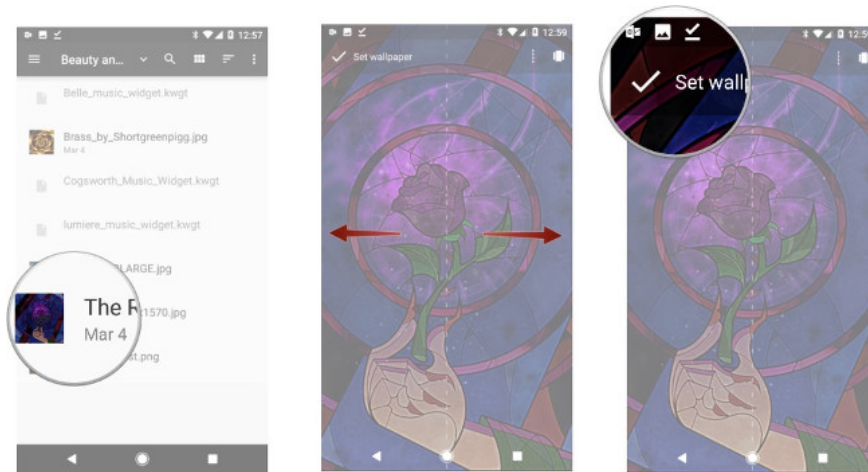
Your device should use Nova Launcher to be able to use this Theme.

How to create Purple Rose Theme

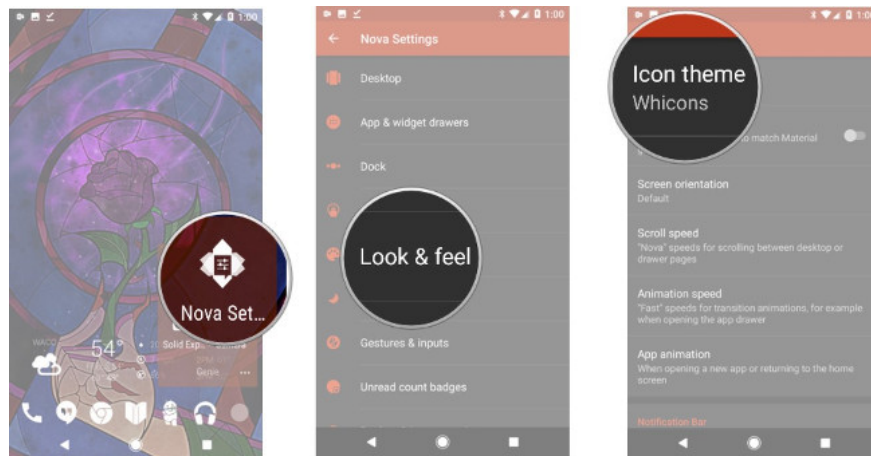
1. Keep the background image on the device's main screen until options appear.
2. Select **Wallpapers**> **Pick Image** .



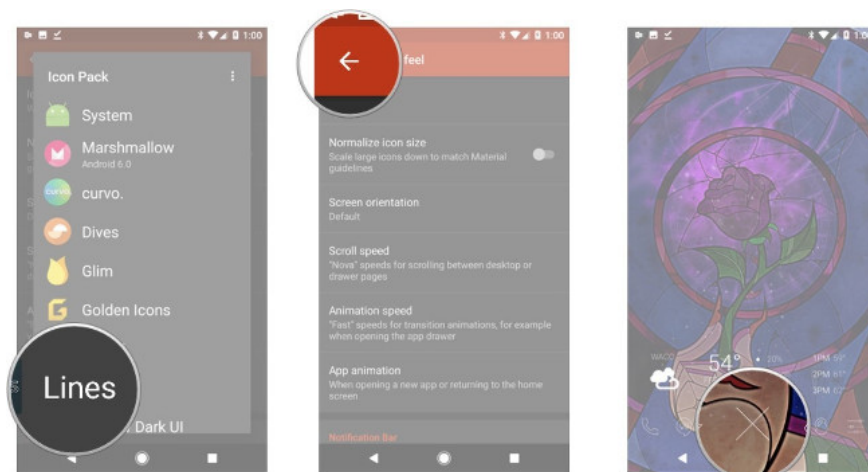
1. Then select the purple rose background image that you downloaded above.
2. Adjust the background image so that the rose must be balanced in the middle of the screen.
3. Select **Set Wallpaper** .



1. Go to Nova Settings> Look & Feel> Icon Themes .

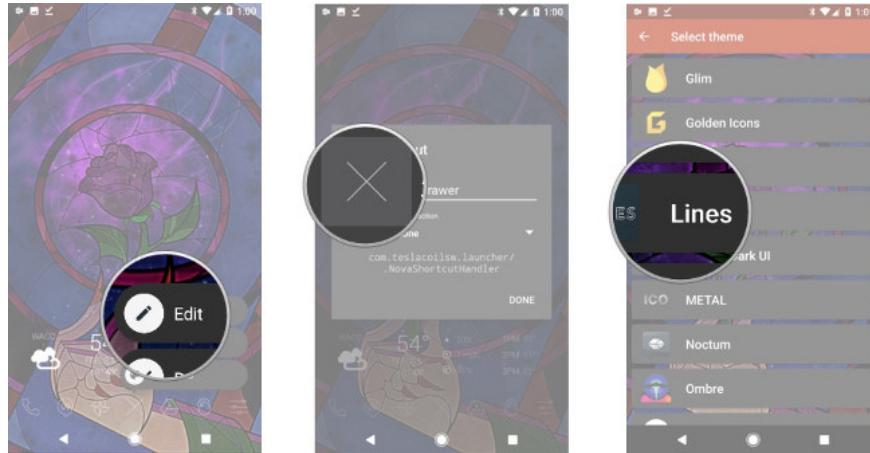


1. Select **Lines** .
2. Go back to the main screen and then hold the **App Drawer** icon until the options appear.

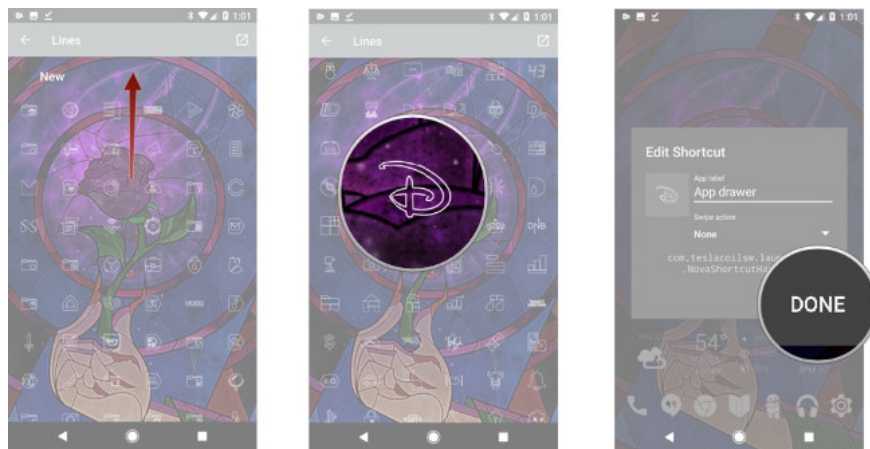


1. Select **Edit** .

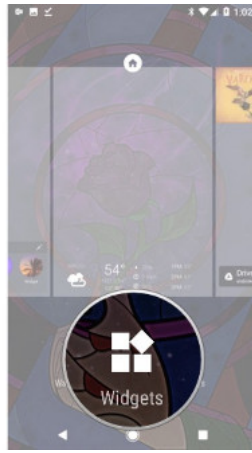
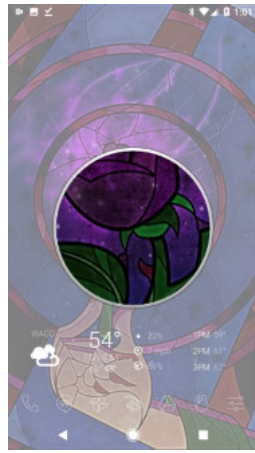
2. Click on the icon box to change the icon.
3. Select **Lines**.



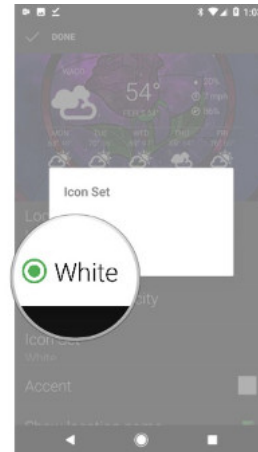
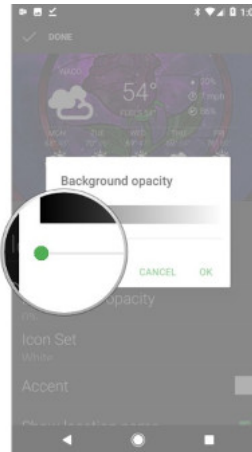
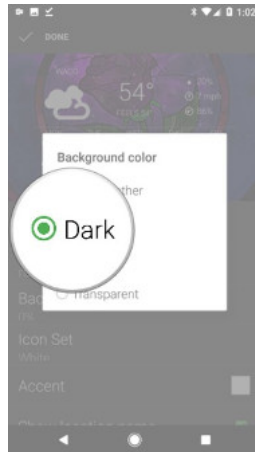
1. Select the Disney symbol **D** (as shown in the picture)
2. Click **Done** to confirm the changes.



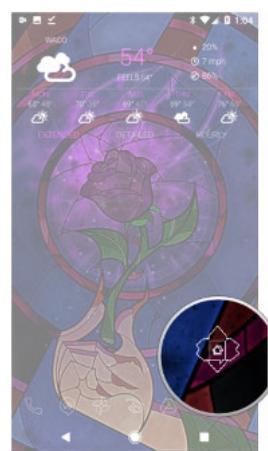
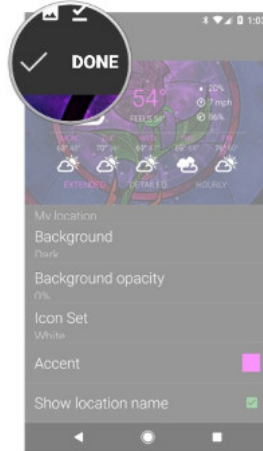
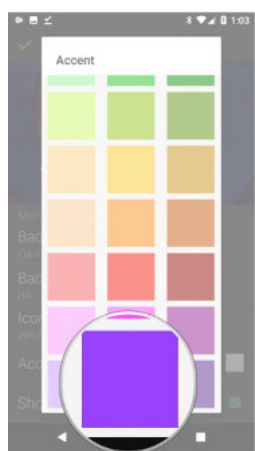
1. Continue to keep the wallpaper on the device's main screen until options appear.
2. Select **Widgets**.
3. Hold and drag the **1Weather Tabbed** widget to the top of the device's screen.



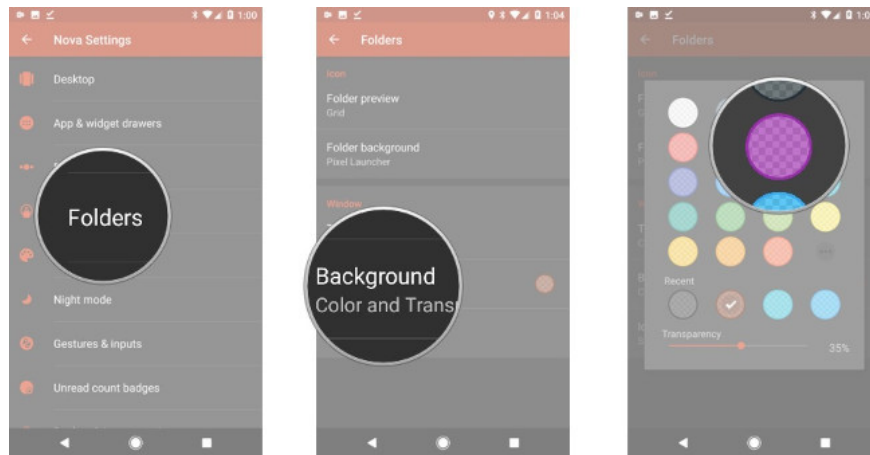
1. In the **configuration** window, change the **Background** to black by selecting **Dark** .
2. Drag the **background opacity** to **0%** .
3. Change the **Icon Set** color to **White** .



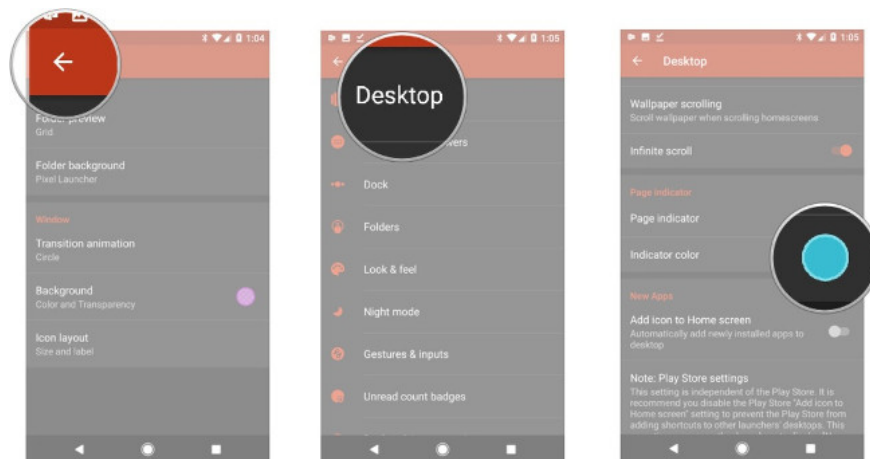
1. Change the **Accent** color to Purple (as shown in the picture).
2. Click **Done** .
3. Continue to open **Nova Settings** .



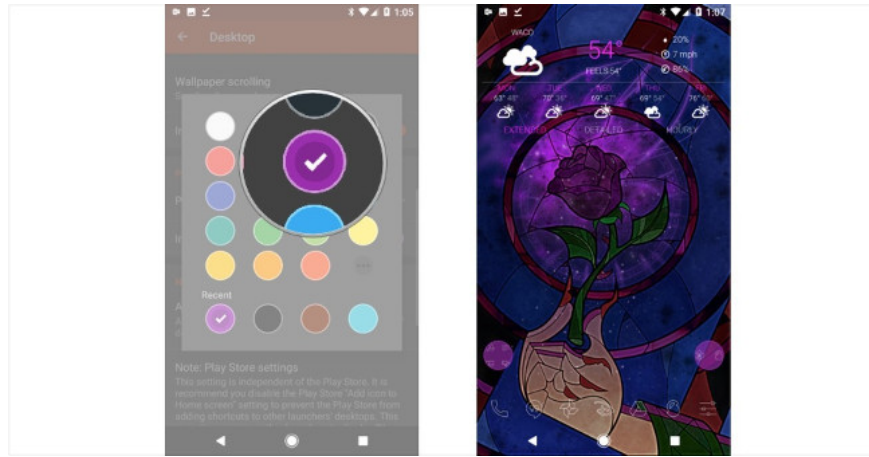
1. Select **Folders> Background** .
2. Choose purple (as shown in the picture).



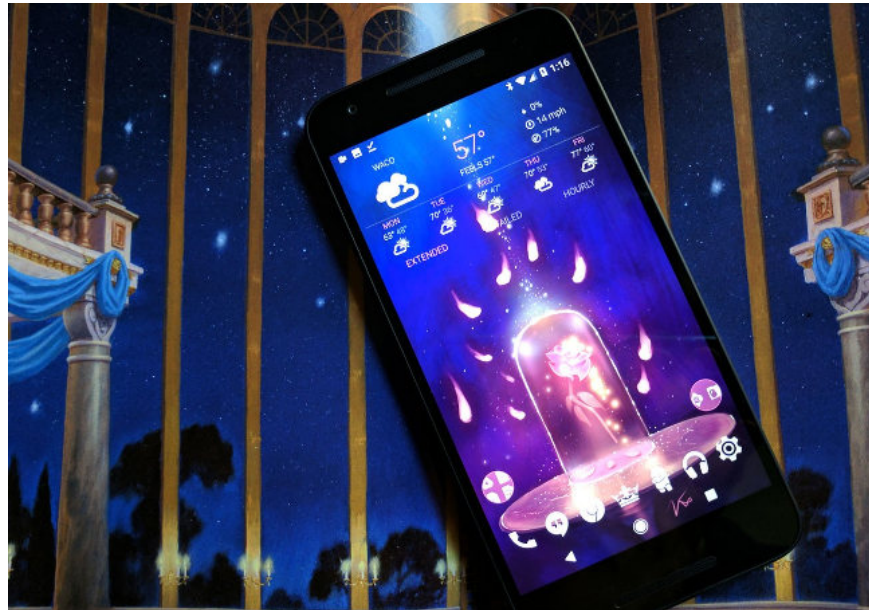
1. Return to **Nova Settings** .
2. Go to **Desktop** .
3. Click on the **Color indicator** item.



1. Choose Purple (as shown in the picture).
2. Return to the main screen.



III. Rose theme of Prince Adam



Prepare:

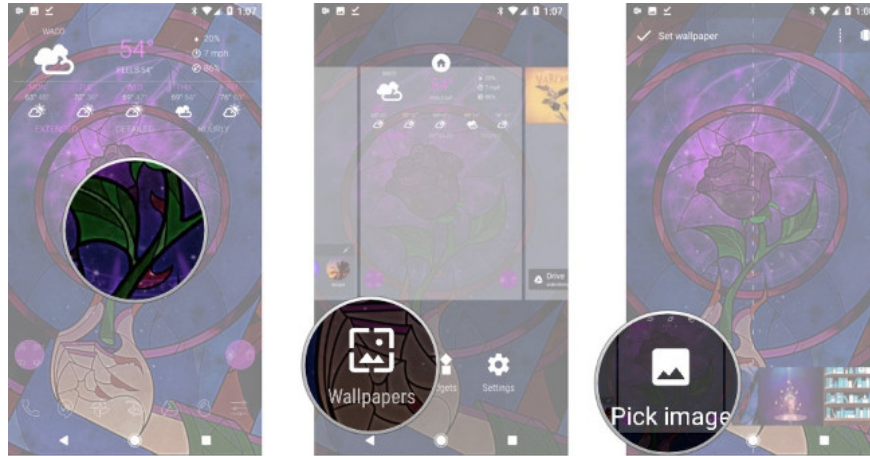
1. Download rose wallpaper of Prince Adam (Enchanted Rose)
2. Icon Whicons package
3. 1Weather widget

Request:

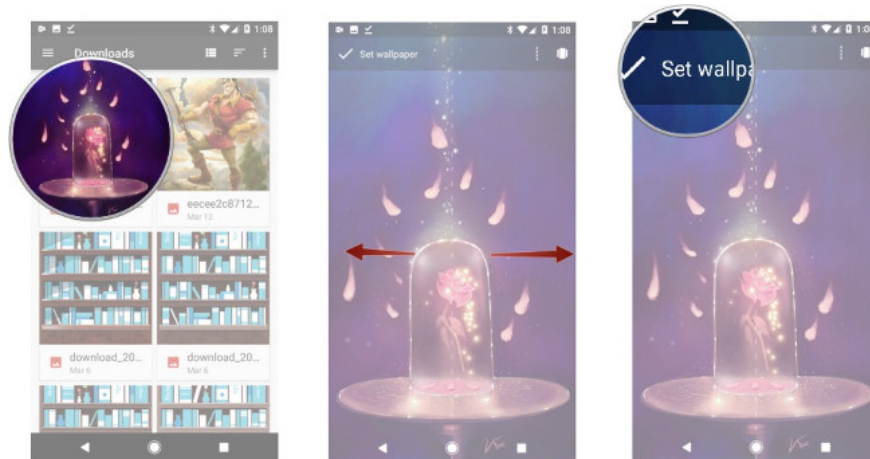
Your device should use Nova Launcher to be able to use this Theme.

How to create a Rose Theme by Prince Adam

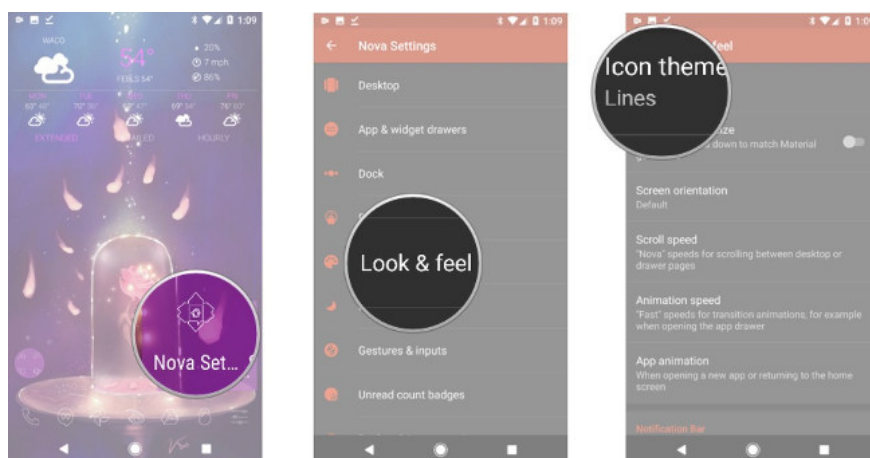
1. Keep the background image on the device's main screen until options appear.
2. Select **Wallpapers**> **Pick Image**.



1. Then select the purple rose background image that you downloaded above.
2. Adjust background image.
3. Select **Set Wallpaper** .

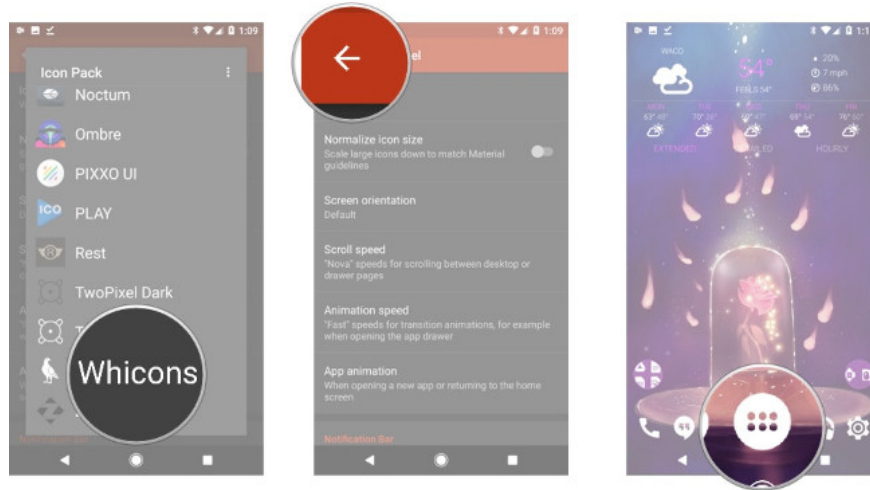


1. **Go to Nova Settings> Look & Feel> Icon Themes .**

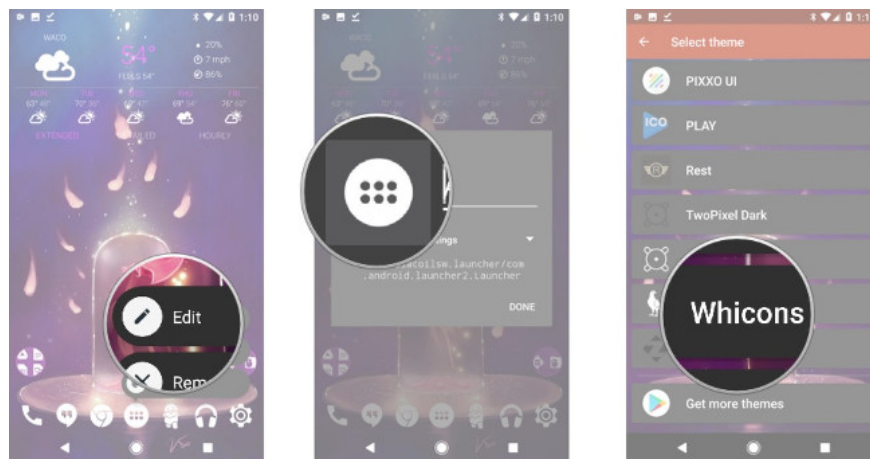


1. Choose **Whicons** .

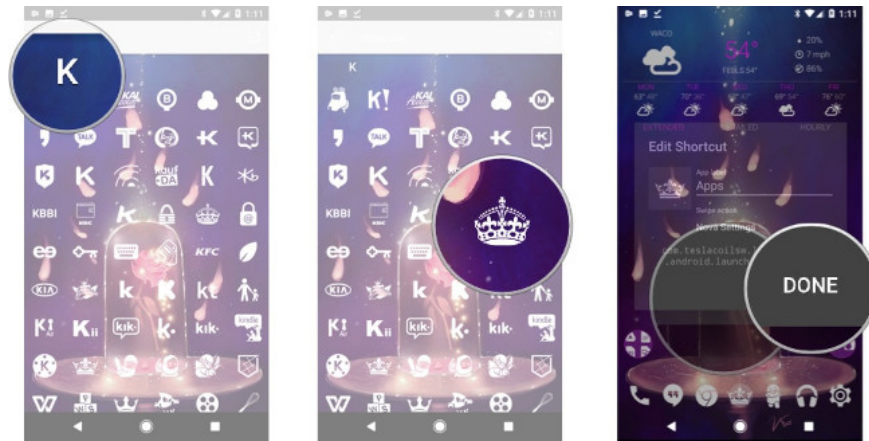
2. Go back to the main screen and then hold the App Drawer icon until the options appear.



1. Select **Edit** .
2. Click on the icon box to change the icon.
3. Choose **Whicons** .



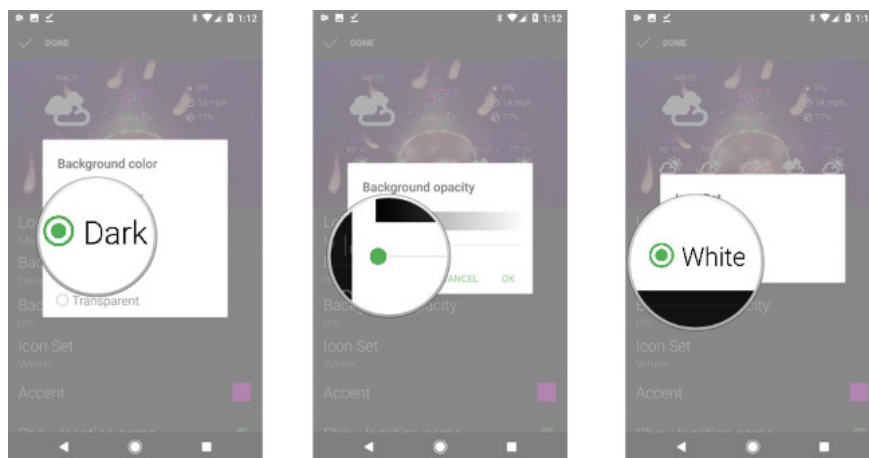
1. Select the **K** symbol and select the crown shape (as shown in the picture).
2. Click **Done** to confirm the changes.



1. Continue to keep the wallpaper on the device's main screen until options appear.
2. Select **Widgets** .
3. Hold and drag the **1Weather Tabbed** widget to the top of the device's screen.

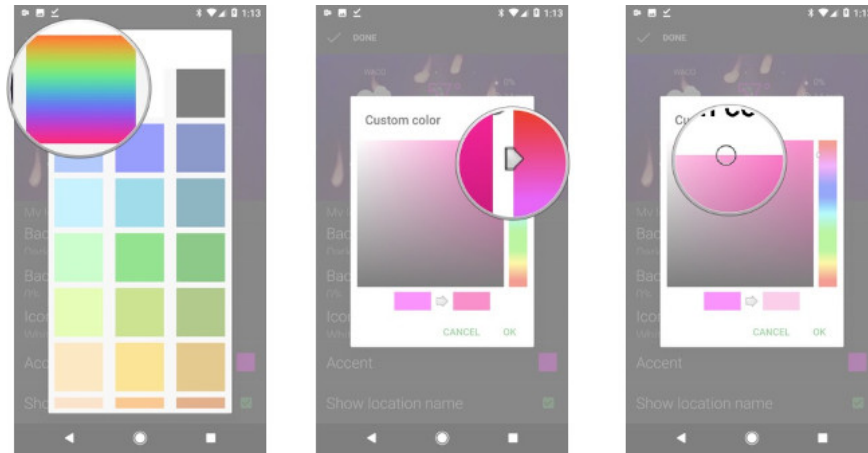


1. In the **configuration** window, change the **Background** to black by selecting **Dark** .
2. Drag the **background opacity** to **0%** .
3. Change the **Icon Set** color to **White** .

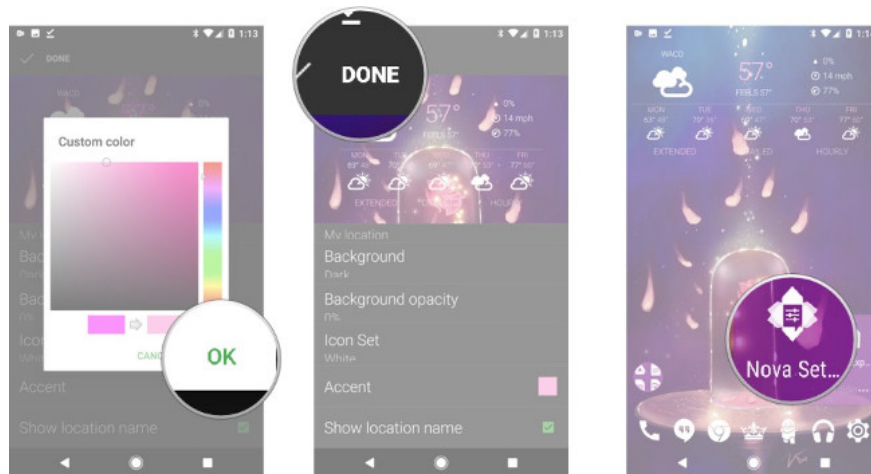


1. Change the **Accent** color to **Custom** (as shown in the picture).

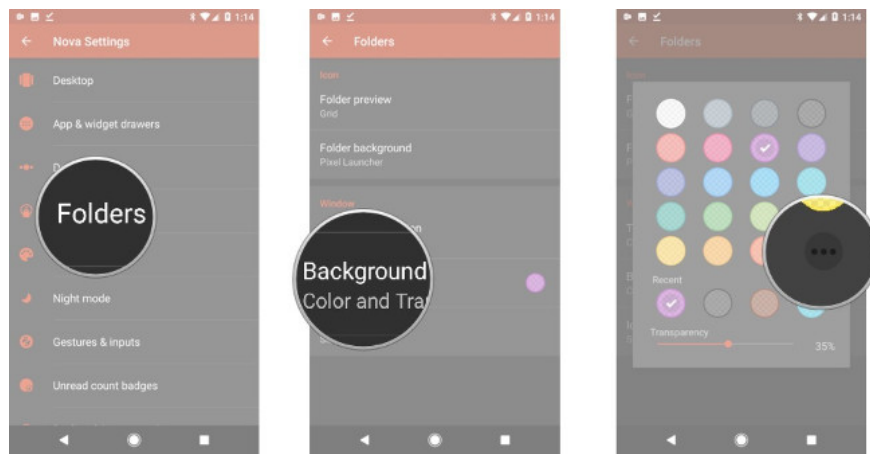
2. Drag the arrow bar to the right of the palette and the circle inside the palette to the position shown in the image.



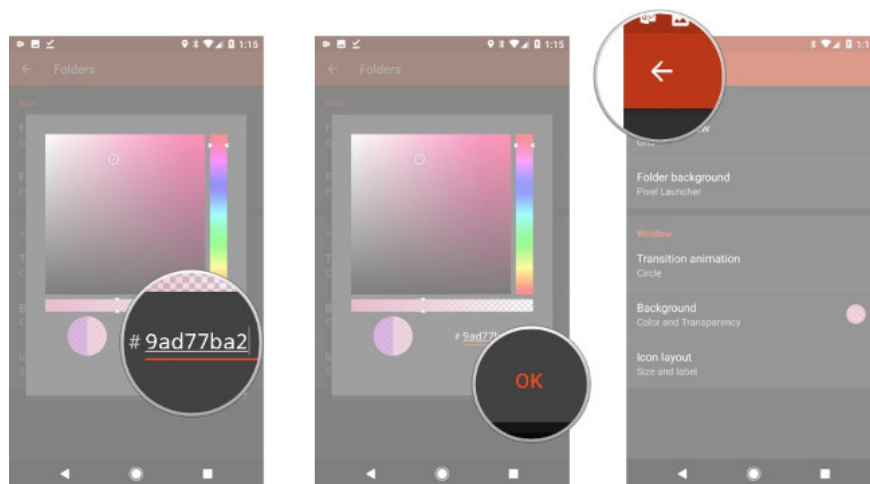
1. Click **OK** .
2. Click **Done** .
3. Return to **Nova Settings** .



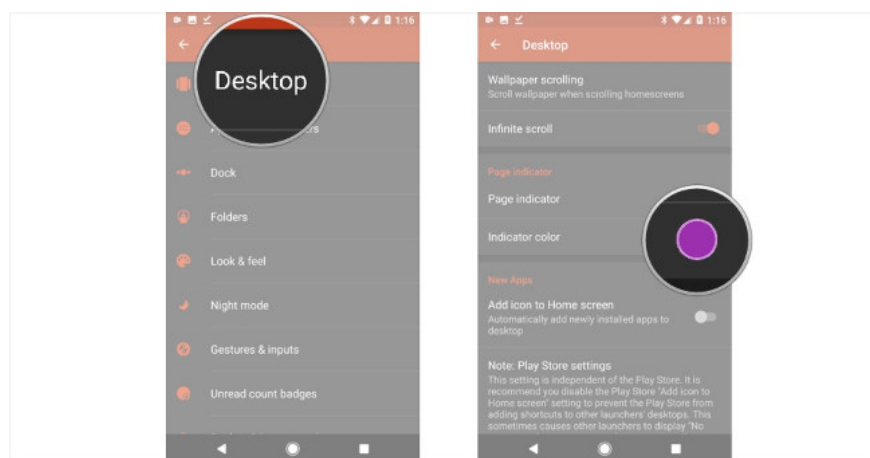
1. Select **Folders** .
2. Select **Background** .
3. Click on the custom icon (there are 3 black dots).



1. Change to #9ad77ba2 color (type to change).
2. Click **OK**.
3. Return to **Nova Settings**.

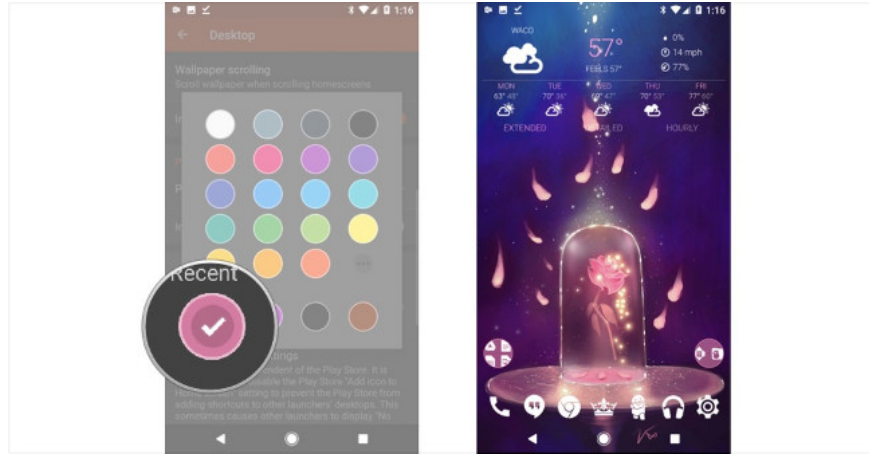


1. Go to **Desktop**.
2. Click on the **Color indicator** item.

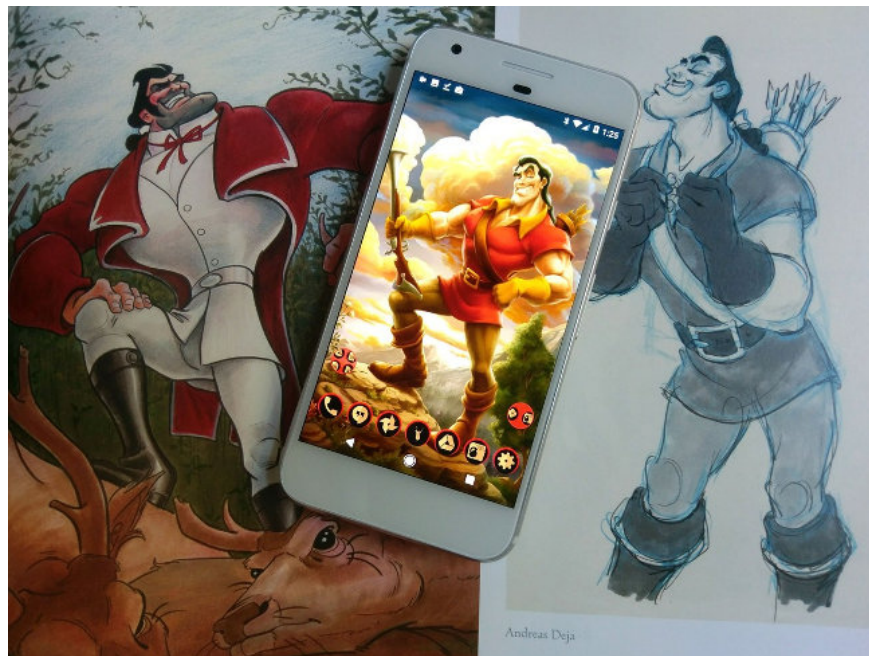


1. Click the **Recent** color (as shown in the picture) to use the same color just above the **Folders** section.

2. Return to the main screen.



IV. Gaston Theme



Prepare:

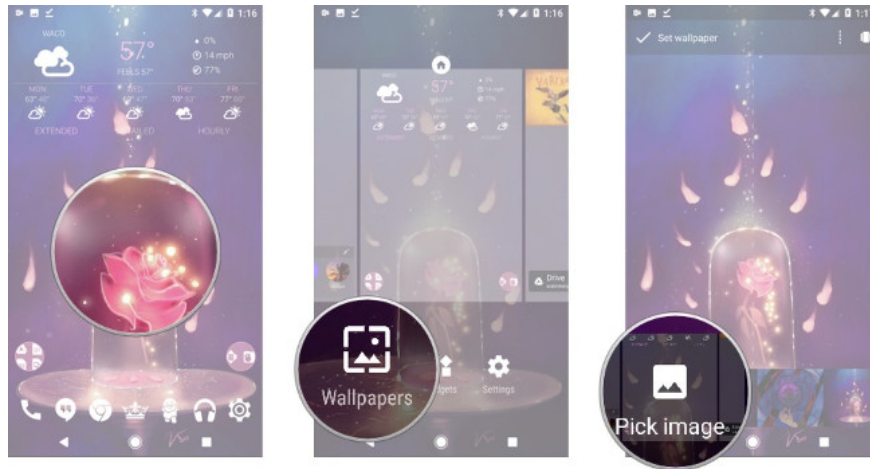
1. Download Gaston wallpaper (Gaston's Profile)
2. Absolute Red Icon Icon Pack

Request:

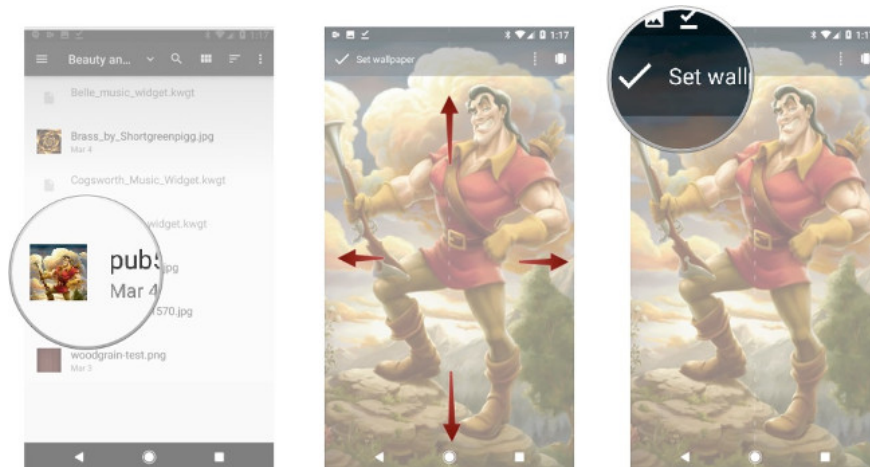
Your device should use Nova Launcher to be able to use this Theme.

How to create Gaston Theme

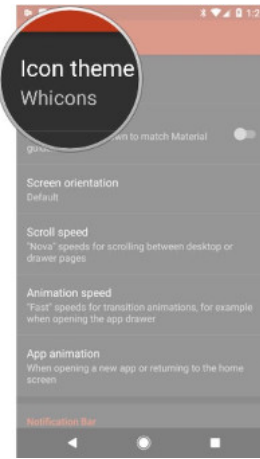
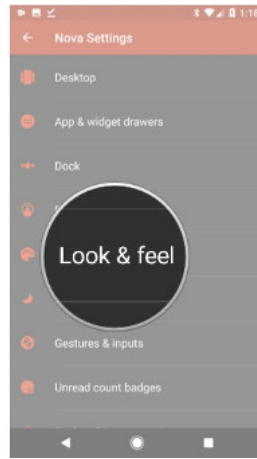
1. Keep the background image on the device's main screen until options appear.
2. Select **Wallpapers> Pick Image** .



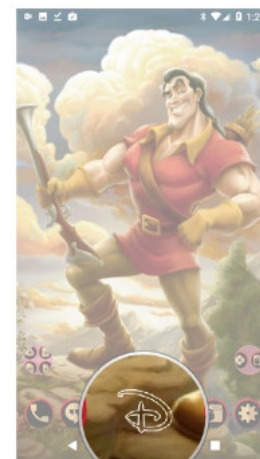
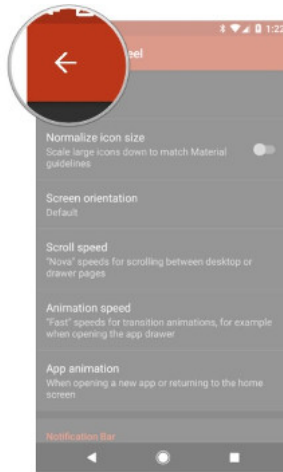
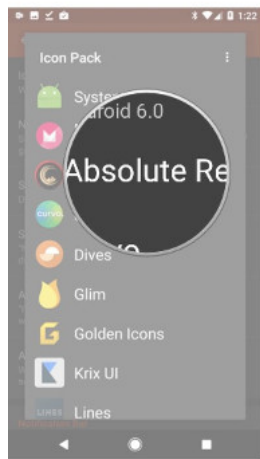
1. Then select Gaston background image that you downloaded above.
2. Adjust the background image as shown in the picture.
3. Select **Set Wallpaper** .



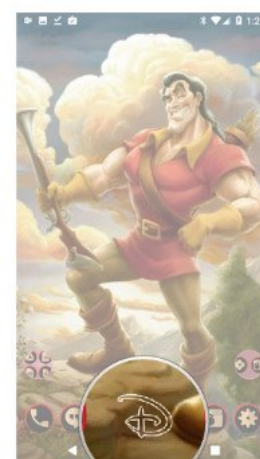
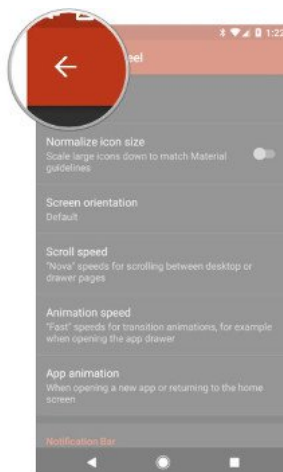
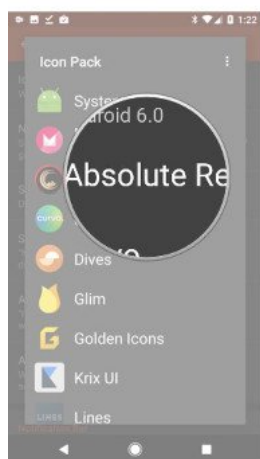
1. Go to **Nova Settings> Look & Feel> Icon Themes** .



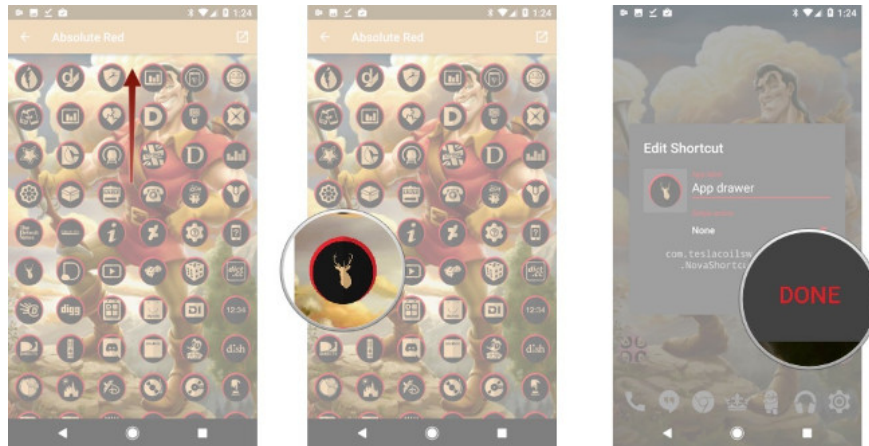
1. Choose **Absolute Red** .
2. Go back to the main screen and then hold the **App Drawer** icon until the options appear.



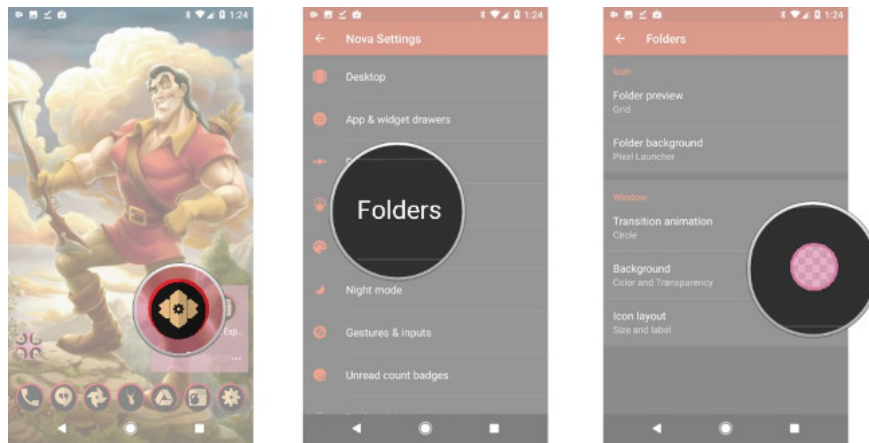
1. Select **Edit** .
2. Click on the icon box to change the icon.
3. Choose **Absolute Red** .



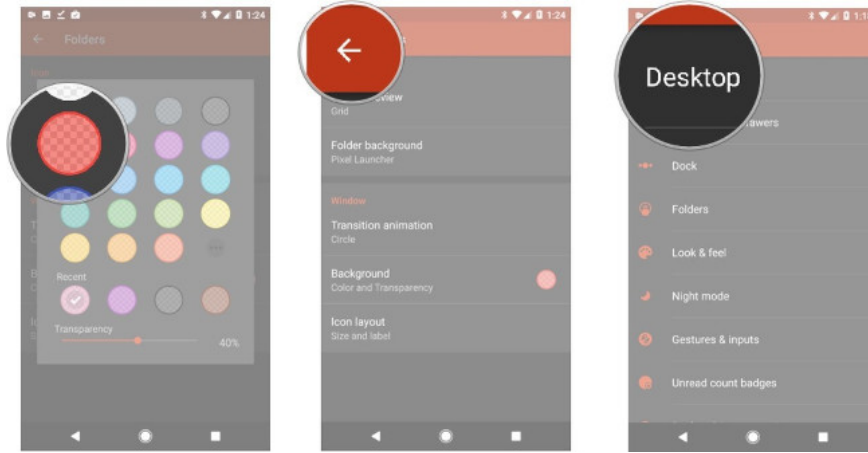
1. Select the letter **D** icon and select the deer head image (as shown in the picture).
2. Click **Done** to confirm the changes.



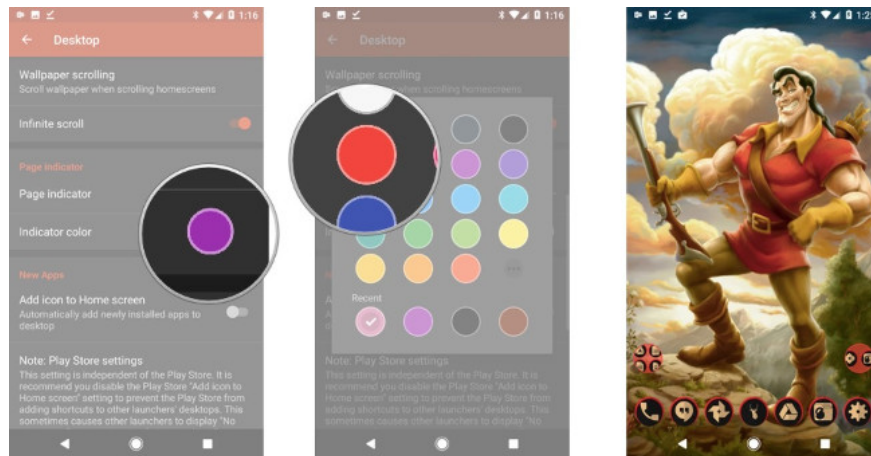
1. Open **Nova Settings** .
2. Select **Folders** .
3. Select **Background** .



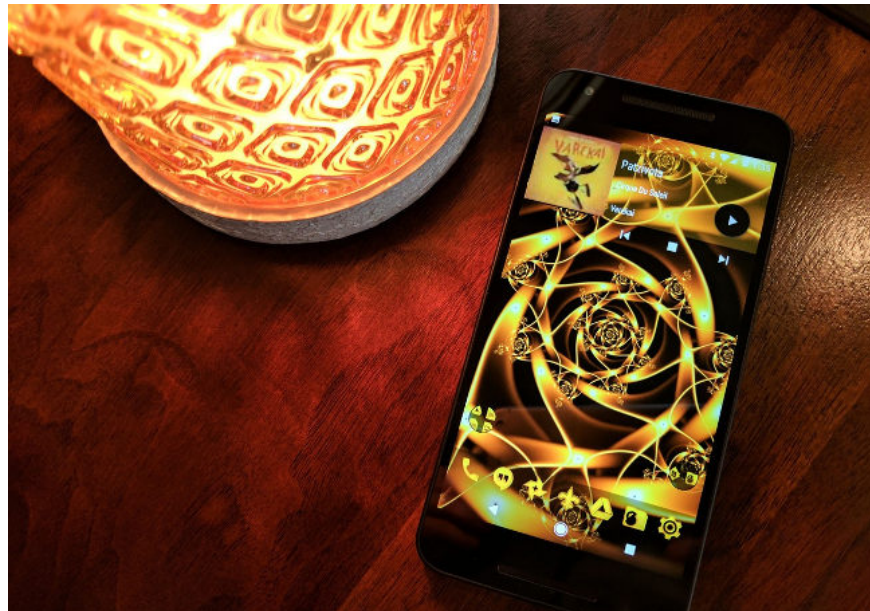
1. Choose red (as shown in the picture).
2. Return to **Nova Settings** .
3. Go to **Desktop** .



1. Click on the **Color indicator** item.
2. Change to red (as shown in the picture)
3. Return to the main screen.



V. Lumiere Theme



Prepare:

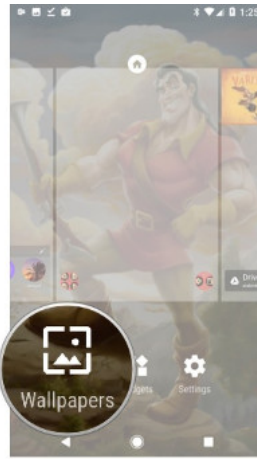
1. Download Brass Wallpaper photo background
2. Golden Icons Icons Pack
3. 1Weather widget
4. KWGT Pro application
5. File Lumiere Music Widget Preset
6. A File manager application on the phone to move the Lumiere Music Widget Preset File into Folder Widget.

Request:

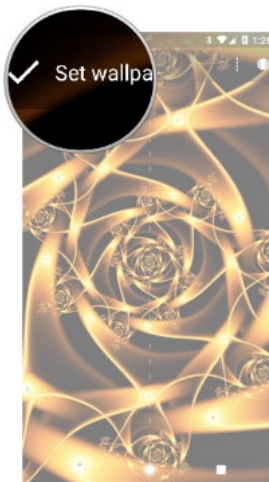
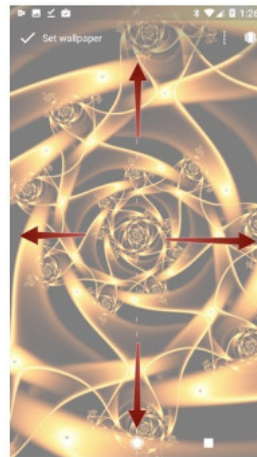
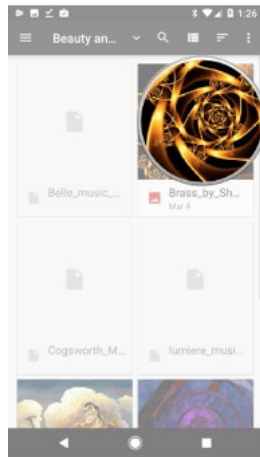
Your device should use Nova Launcher to be able to use this Theme.

How to create Lumiere Theme

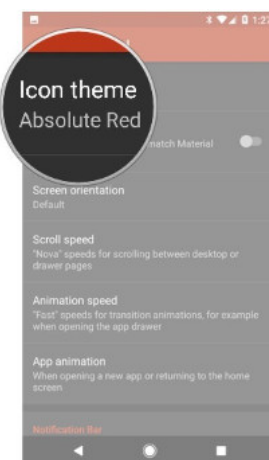
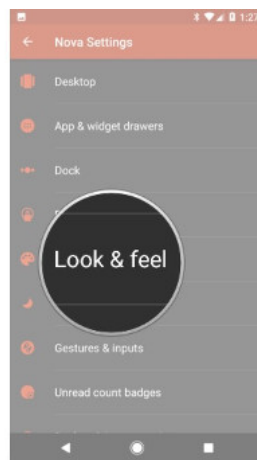
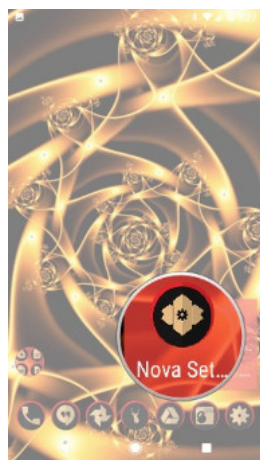
1. Keep the background image on the device's main screen until options appear.
2. Select **Wallpapers> Pick Image** .



1. Then select the Brass Wallpaper image that you downloaded above.
2. Adjust the background image to be balanced.
3. Select **Set Wallpaper** .

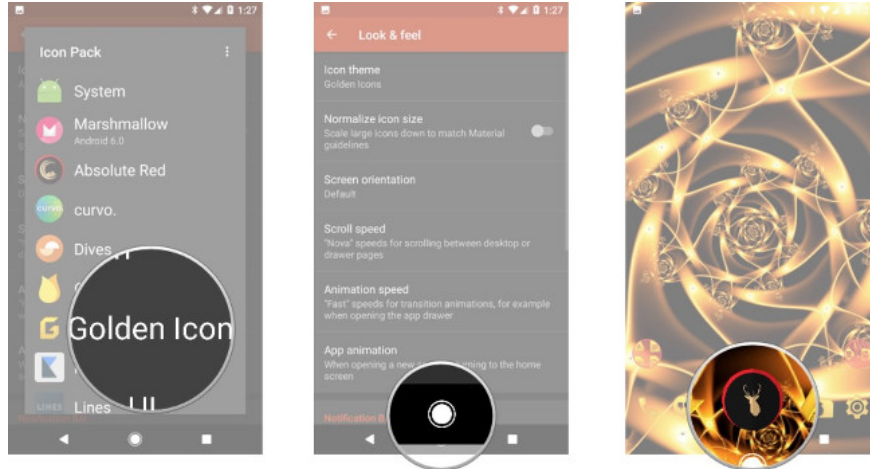


1. Go to **Nova Settings > Look & Feel > Icon Themes** .

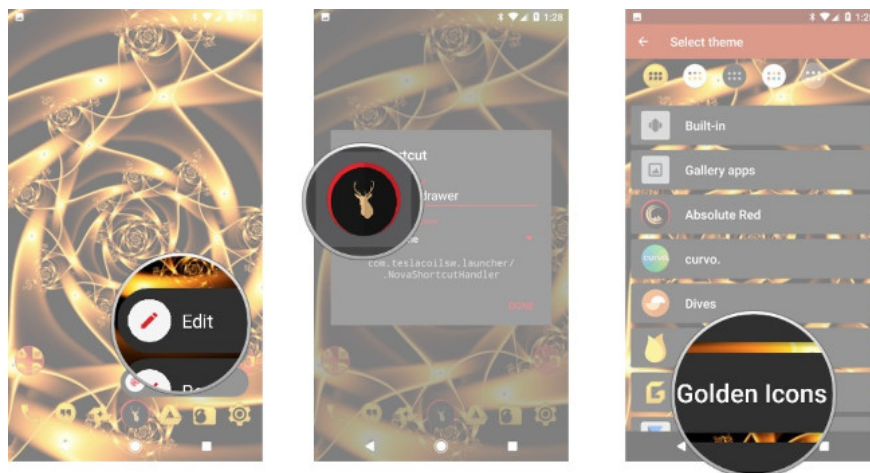


1. Select **Golden Icons** .

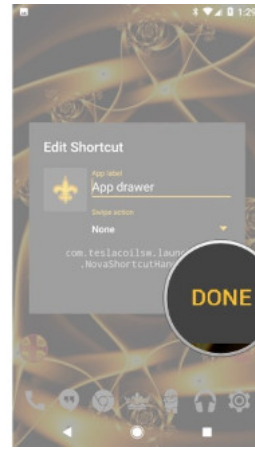
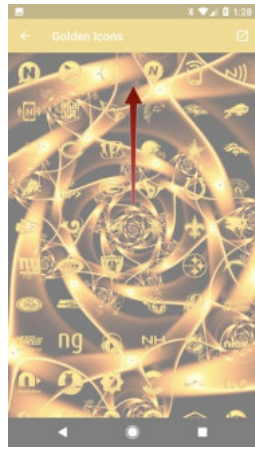
2. Go back to the main screen and then hold the **App Drawer** icon until the options appear.



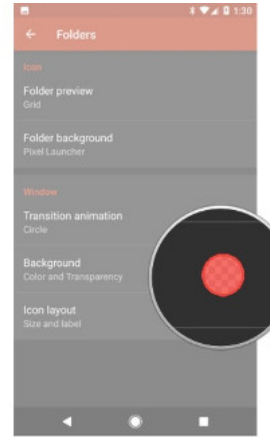
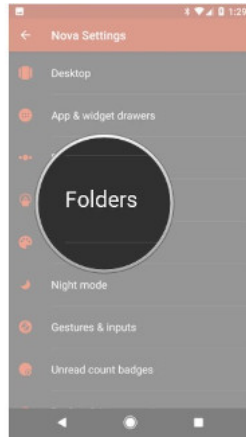
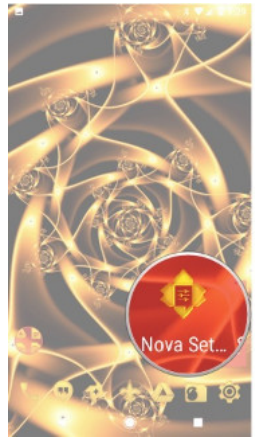
1. Select **Edit** .
2. Click on the icon box to change the icon.
3. Select **Golden Icons** .



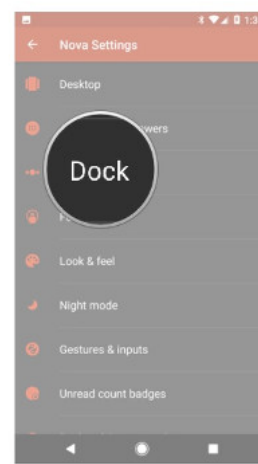
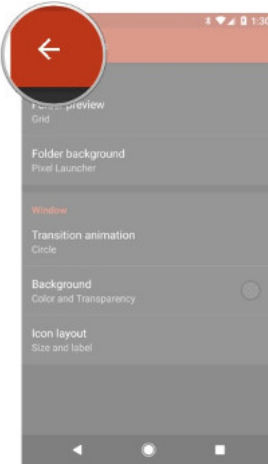
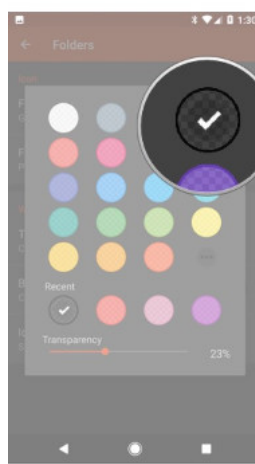
1. Select the **N** symbol, then select the icon as shown in the picture.
2. Click **Done** to confirm the changes.



1. Open **Nova Settings** .
2. Select **Folders** .
3. Select **Background** .

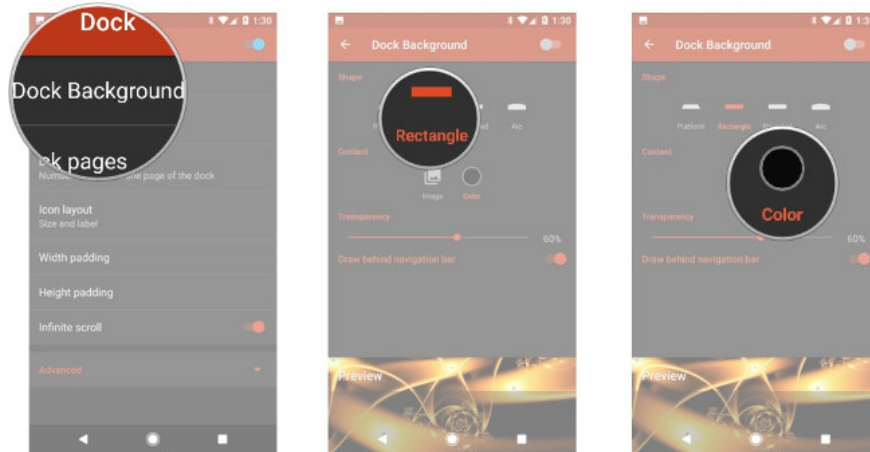


1. Select black (as shown in the picture).
2. Return to **Nova Settings** .
3. Choose **Dock** .

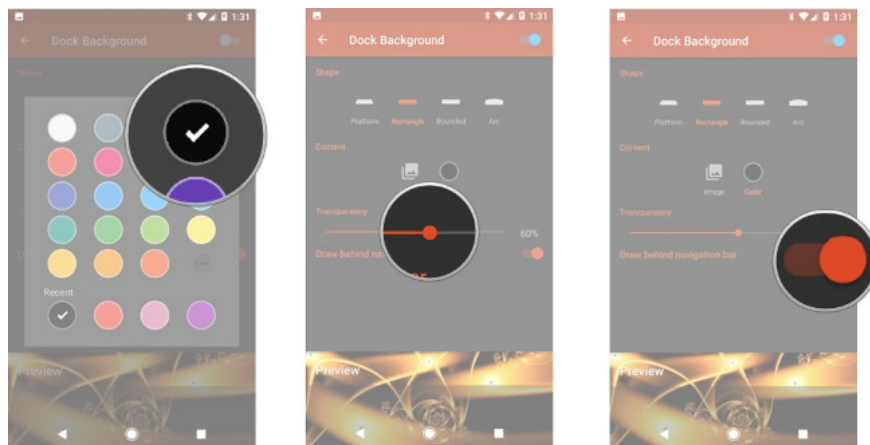


1. Select **Dock Background** .

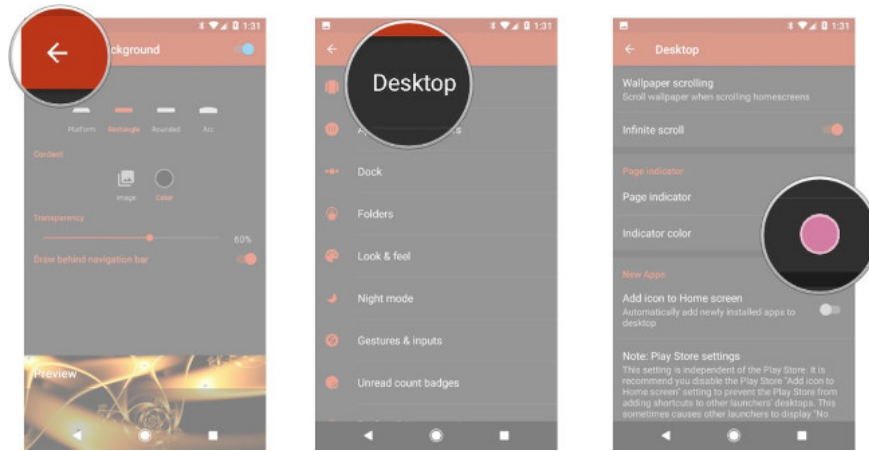
2. In the **Shape** section, select **Rectangle** . In **Content** section select **Color** .



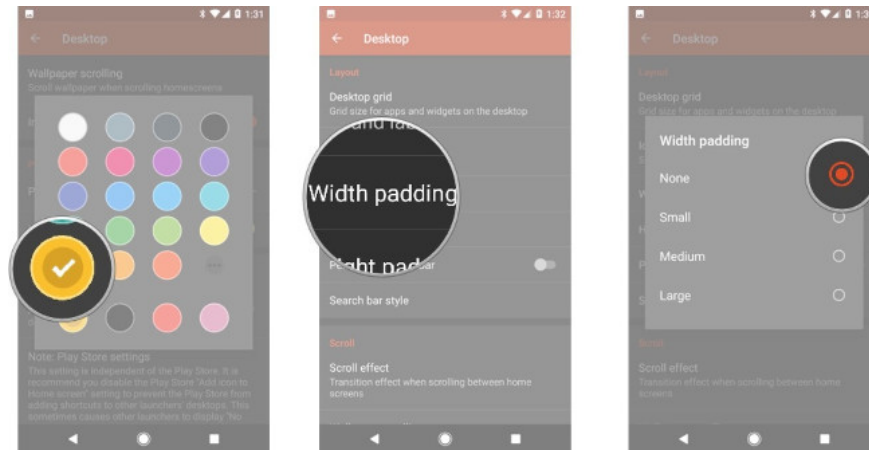
1. Select black (as shown in the picture).
2. Drag **Transparency** bar to **60%** .
3. Turn on the **Draw Behind Navigation Bar** switch.



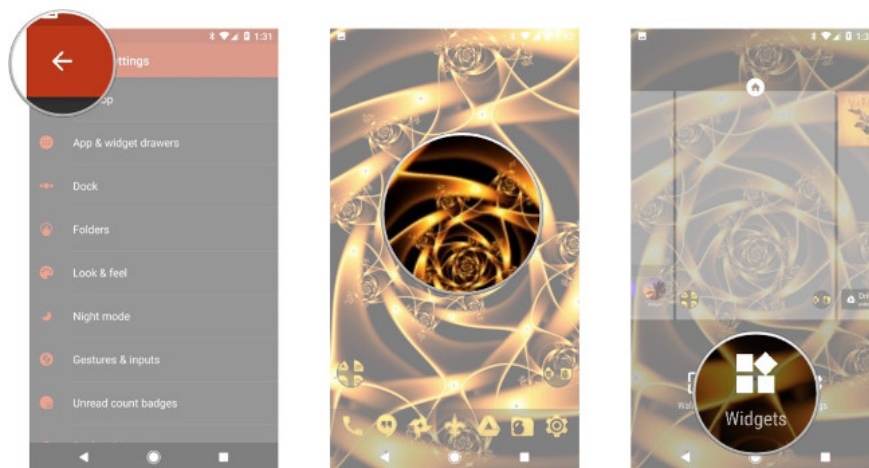
1. Return to **Nova Settings** .
2. Go to **Desktop** .
3. Click on the **Color indicator** item.



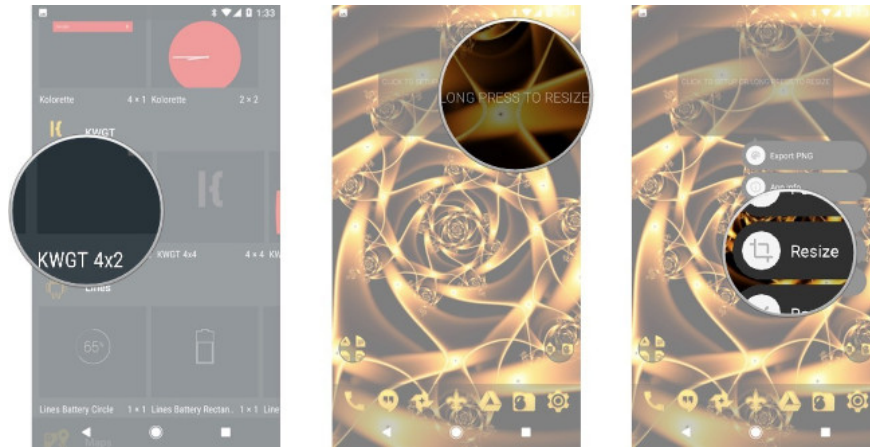
1. Choose yellow (as shown in the picture).
2. In the **Layout** section, select **Width padding** .
3. Select **None** .



1. Return to the main screen.
2. Keep the background image on the device's main screen until options appear.
3. Select **Widgets** .



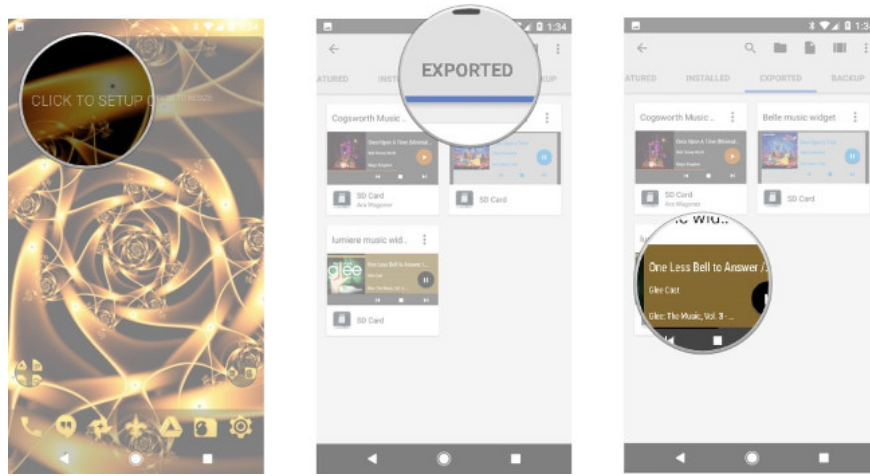
1. Hold and drag the **4x2 KWGT** widget to the position shown in the picture.
2. Press and hold **Widget** until the menu appears.
3. Select **Resize** and adjust the Widget as shown.



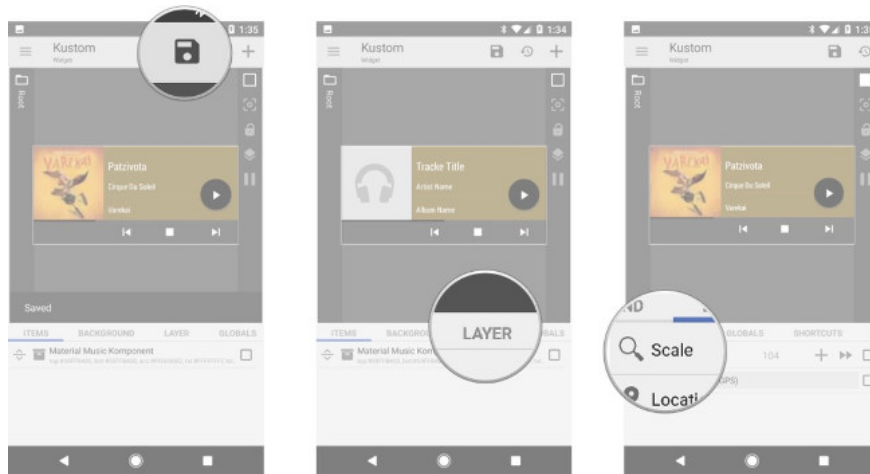
1. Then click on **Widget** to adjust the settings of that Widget.
2. Click **Padding** to drag Widget to the edge of the screen.



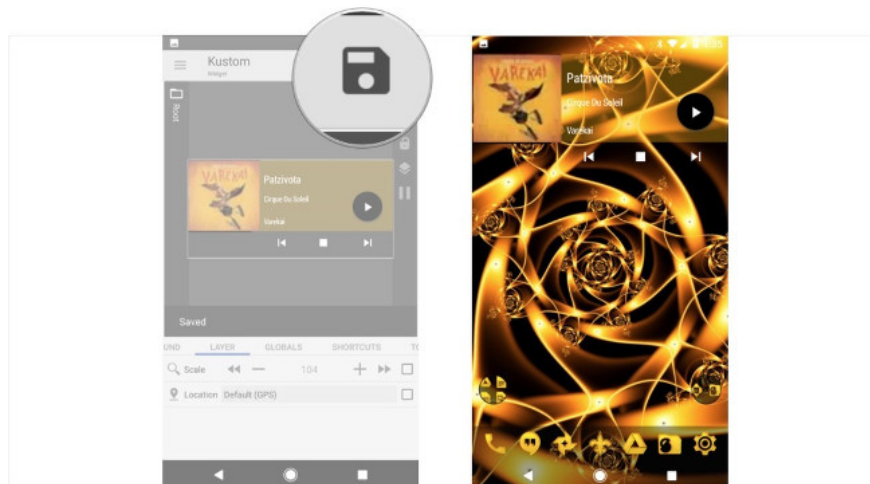
1. Select Tab **Exported** at the top of the screen.
2. Click **Lumiere Music Widget** .



1. Click the **Save** icon to have a floppy disk image to save.
2. Select Tab **Layer** .
3. Adjust the **Scale** section so that the part that displays the image of the song on the Widget closely follows the Widget background (as shown in the picture).



1. Click the **Save** icon to have a floppy disk image to save. Select **Yes** .
2. Return to the main screen.



You finished reading the article "**Android theme variation on the theme of Beauty and monsters movies**" edited by the [TipsMake](#) team. We hope this article has provided you with many useful tech tips and tricks. You can search for similar articles on tips and guides. Thank you for reading and for following us regularly.
