

Analysis services in MS SQL Server

This service is used to analyze a large amount of data and for businesses to make decisions.

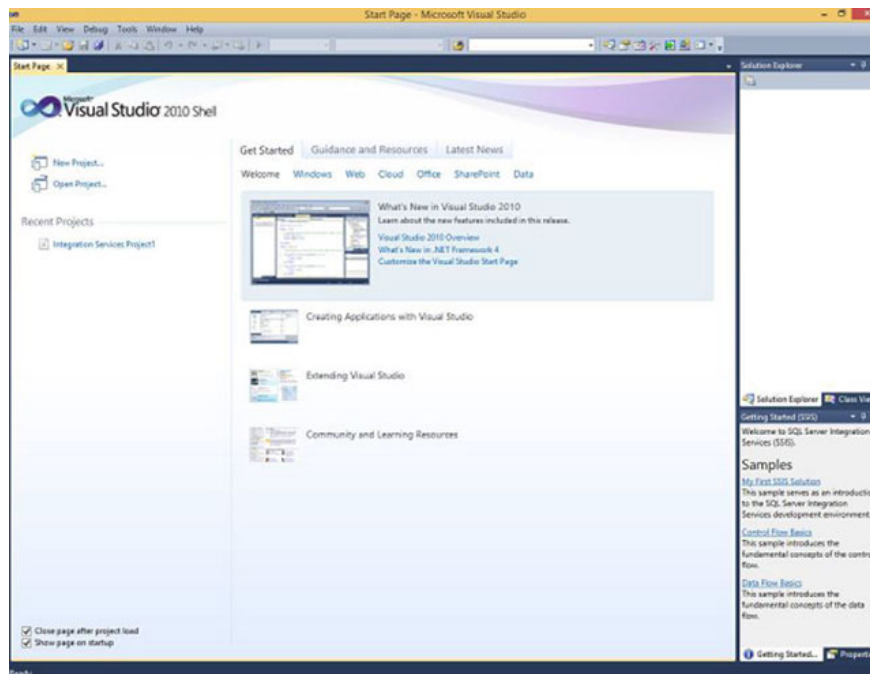
This service is used to analyze a large amount of data and for businesses to make decisions. It is used to create 2 or more dimensional business models.

In SQL Server 2000, it is named MSAS (Microsoft Analysis Services). From SQL 2005 onwards, it is called SSAS (SQL Server Analysis Services).

1. There are 2 modes: **Native Mode** (SQL Server Mode) and **Share Point Mode**.
2. There are 2 models: **Tabular Model** (for group and personal analysis - Team and Personal) and **Multi Dimensions Model** (for business analysis - Corporate).

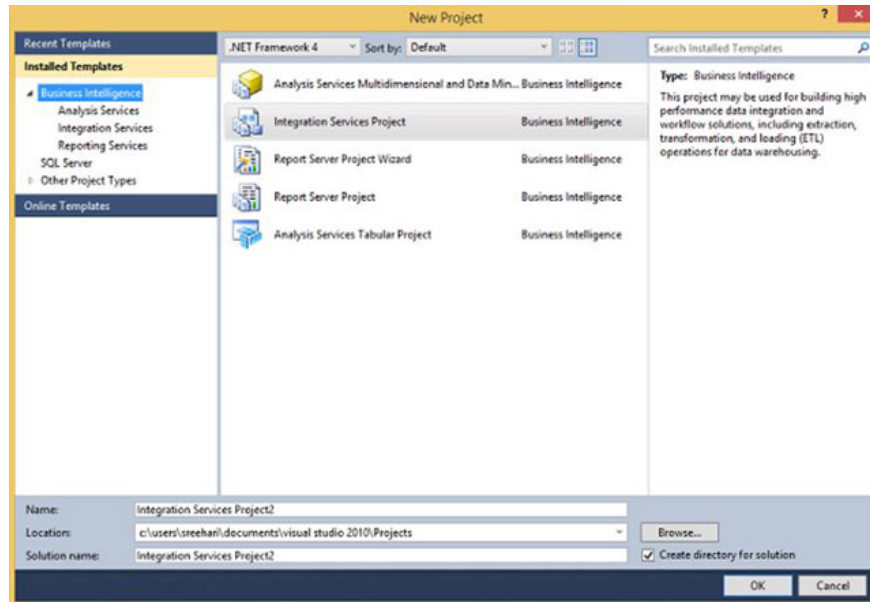
BIDS (Business Intelligence Studio until 2008 R2) and **SSDT** (SQL Server Data Tools from 2012) are the environments for SSAS to work.

Step 1 - Open the BIDS or SSDT from the MS SQL Server program group. The screen below will appear.



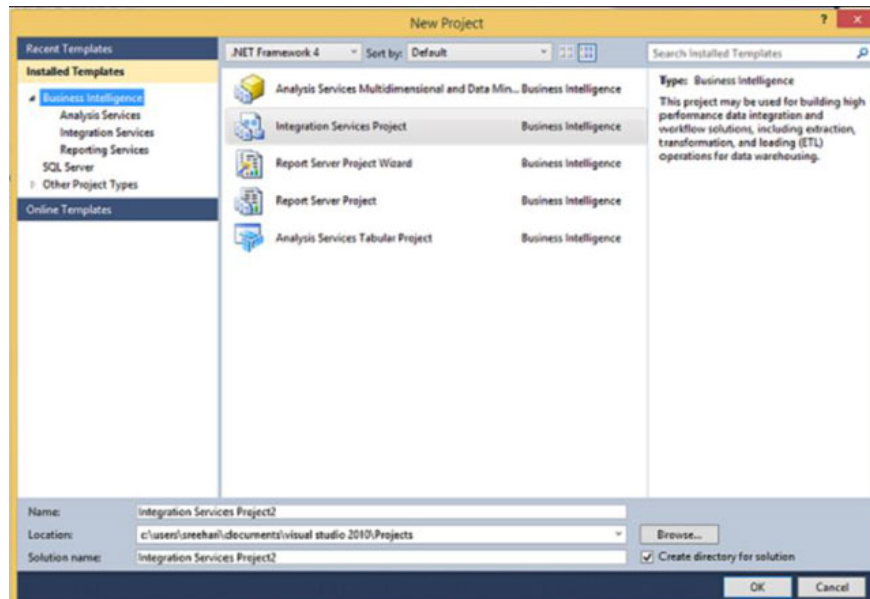
Opened SSDT screen

Step 2 - Go to **File** in the left corner and select **New > Project** to open the screen below.



Select the new Project

Step 3 - Select **Analysis Service** under **Business Intelligence** in the upper left corner of the screen above to get the screen below.



Opened Analysis Service

Step 4 - On the screen above, select any of the 5 options according to your own requirements.

Previous article: Integrated services in MS SQL Server

Next article: SELECT command in SQL Server

You finished reading the article "**Analysis services in MS SQL Server**" edited by the [TipsMake](#) team. We hope this article has provided you with many useful tech tips and tricks. You can search for similar articles on tips and guides. Thank you for reading and for following us regularly.
