

All problems with starting Windows in Safe Mode

Safe Mode is a mode that helps Windows to boot with minimal devices and services so that it can diagnose what is wrong with Windows and fix the error.

There are many problems with the operating system when configuring the wrong software or installing the wrong driver, then the job we need to do is to uninstall what has just been done. However, there are many cases of unacceptable errors in the normal desktop. Then we can use Safe Mode to fix this.

1. Introduction

Safe Mode is a mode that helps Windows to boot with minimal devices and services so that it can diagnose what is wrong with Windows and fix the error. When entering this mode, the additional software will not work and the virus will not affect.

On Win98 / ME, XP, Vista and Windows 7 there are 2 ways to boot into Safe Mode, however, there is only one way to boot into Safe Mode on Windows 95 and Windows 2000.

F8 key: By pressing F8 key when Windows starts. You will be taken to the Menu to select Safe Mode boot mode. If no Menu appears, you need to proceed to restart the computer and operate faster.

System Configuration Utility: You can use System Configuration Utility or MSCONFIG on Windows 98, ME, XP, Windows Vista, and Windows 7 to start Windows in Safe Mode.

More reference: Start Windows 7, 8, 10 in Safe Mode without F8 key

2. Windows 95

The only way to boot Windows 95 in Safe Mode is to use the F8 key.

Steps to take:

1. Start your computer.
2. When your computer starts, after you see the Starting Windows 95 message, press the F8 key.
3. At this point you will be taken to a Menu. Use the arrow keys to select Safe Mode.
4. Press the Enter key to start Safe Mode.
5. After finding the error and fixing the errors, reboot your computer to boot in normal mode.

2. Windows 98 / ME

Use F8 key:

1. Restart your computer.
2. When your computer starts, press **F8** and wait until the Menu appears.
3. Use the arrow keys to select Safe Mode.
4. Press the Enter key to boot in Safe Mode.
5. After finding the error and fixing the errors, reboot your computer to boot in normal mode.

Use the System Configuration Tool:

Step 1:

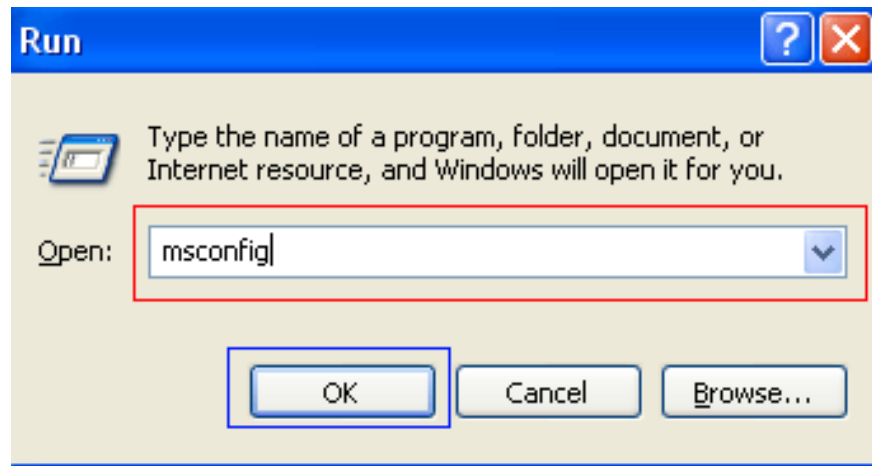
Close all the programs you are opening on the Desktop.

Step 2:

Click the Start button and then click **Run** .

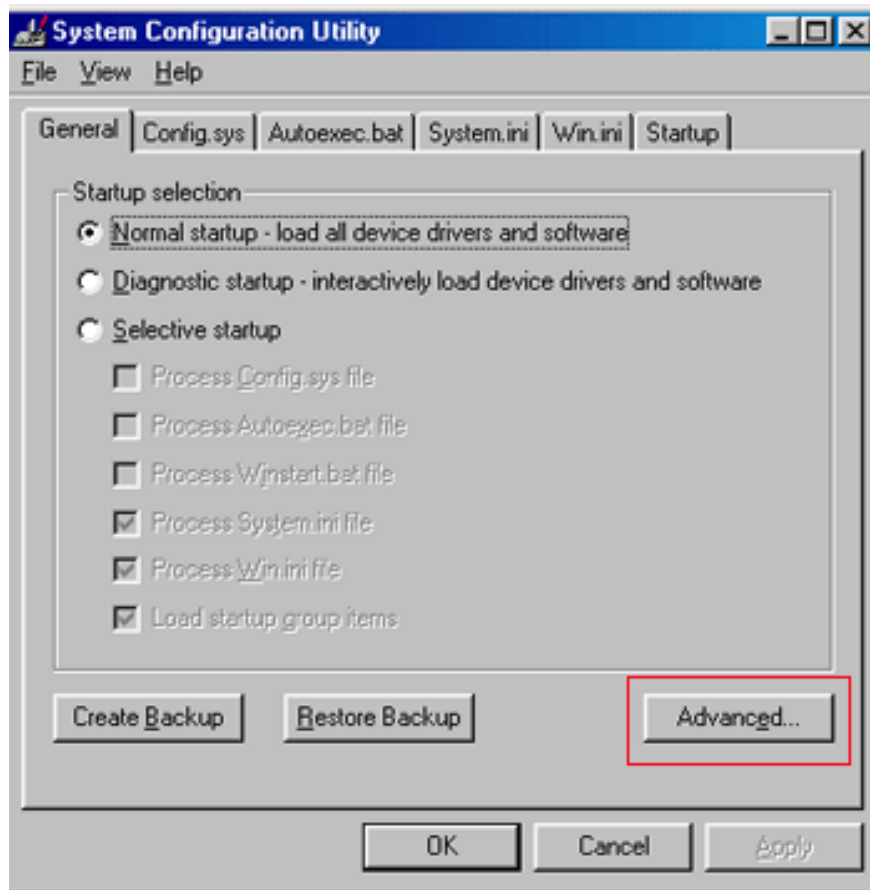
Step 3:

On the Run dialog window, enter the keyword **msconfig** .



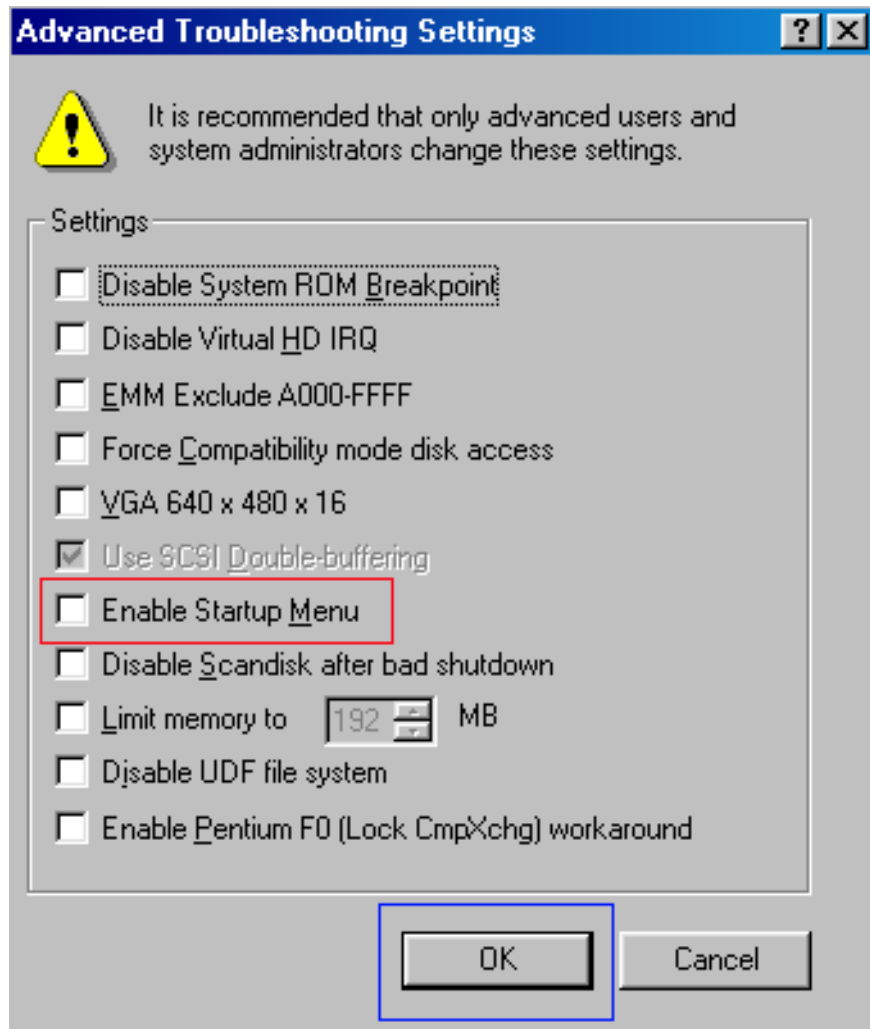
Step 4:

Select OK to open the **System Configuration Utility** .



Step 5:

On the System Configuration Utility interface, click **Advanced**.



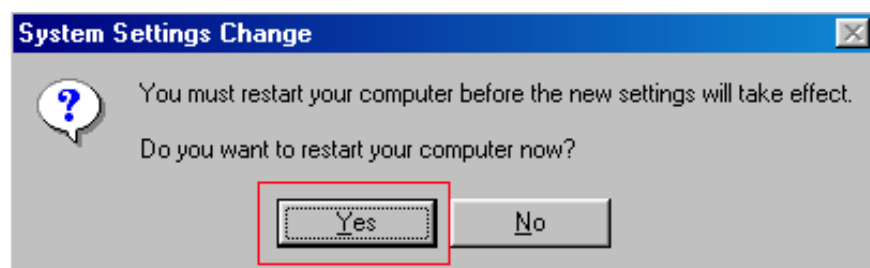
Step 6:

Check the **Enable Startup Menu** option and then select OK.

Next select OK. At this point on the screen you will see a message window asking if you want to restart the computer?

Step 7:

Click **Yes** to start your computer in Safe Mode.



Step 8:

When your computer enters Safe Mode, you can find errors and fix these errors.

Step 9:

After done, repeat the same steps from step 1 to 7. However, in step 6, uncheck the Enable Startup Menu option.

Step 10:

Restart your computer to return to normal mode.

3. Windows 2000

With Windows 2000, the only way to boot in Safe Mode is to use the F8 key.

Steps to take:

1. Restart your computer.
2. When your computer boots, it will list the settings on your computer, memory capacity, hard drive .
3. When the screen appears Starting Windows, press the **F8** key repeatedly until the Windows 2000 Advanced Options menu appears.
4. At the Windows 2000 Menu Advanced Options, use the arrow keys to select the Safe Mode option.
5. Press the Enter key.
6. Now your computer will boot in Safe Mode.
7. After finding the error and fixing the errors, reboot your computer to boot in normal mode.

4. Windows XP

Refer to the steps to start Windows XP in Safe Mode here.

5. Windows Vista

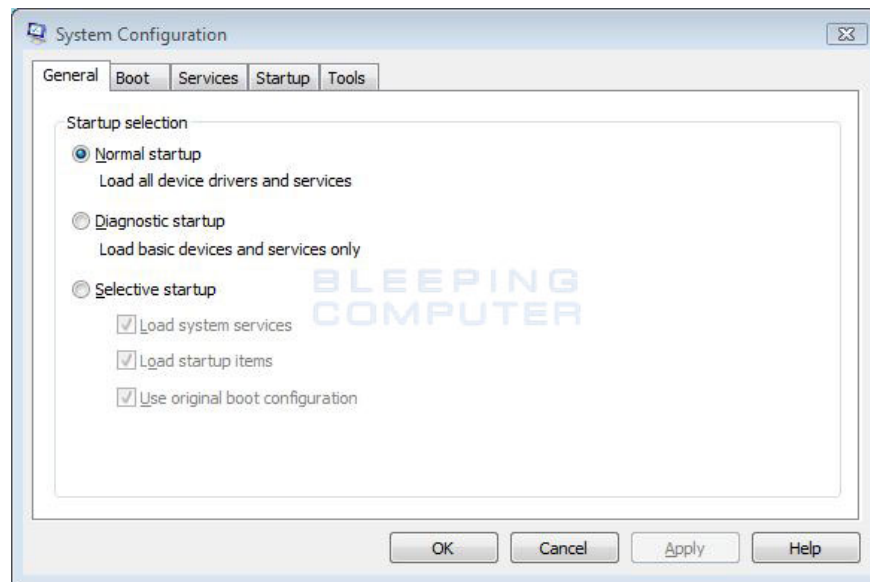
Use F8 key:

1. Restart your computer.
2. When your computer boots up, press the F8 key repeatedly until Windows Vista Advanced Boot Options appears.
3. Use the arrow keys to select the Safe Mode option.
4. Press Enter to start your Windows Vista computer in Safe Mode.

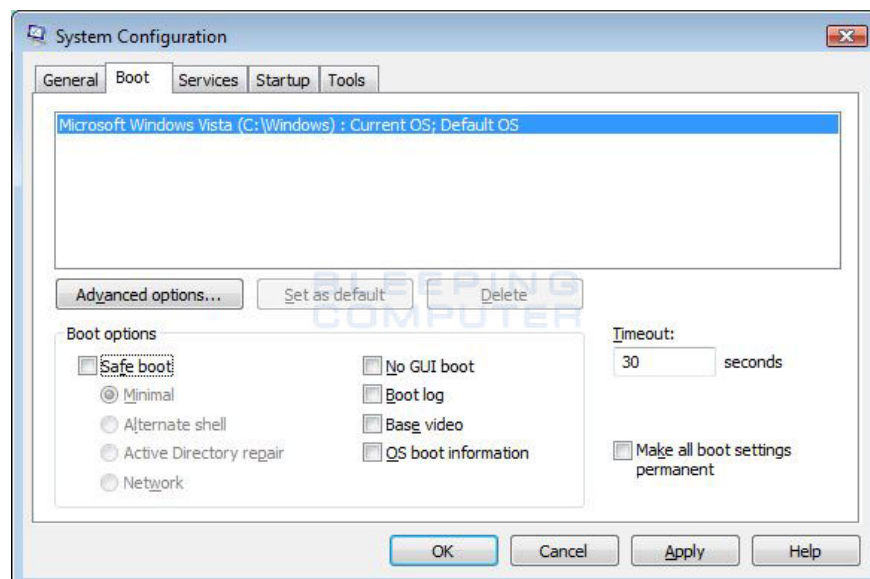
5. When Windows starts, a login screen will appear. Log in to your computer to boot Vista into Safe Mode.
6. After finding the error and fixing the errors, reboot your computer to boot in normal mode.

Use the System Configuration Tool:

1. Close all programs and software running on the Desktop screen.
2. Click on the **Start** button .
3. On the Start Menu, enter the **msconfig** keyword in the Search box and press Enter.
4. The System Configuration dialog box appears now. Here you click the **Boot** tab.



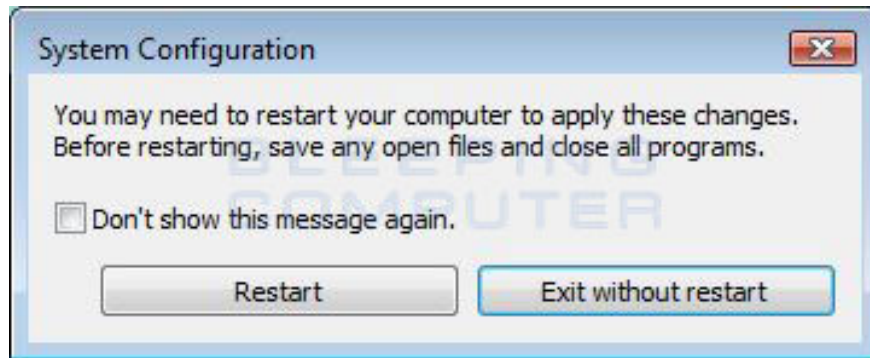
5. Next on the Boot options window, select the **Safe boot** option .



6. Click **Apply** then **OK** .

7. At this time, a window will appear asking you to restart the computer to apply the change.

Click **Restart** to restart your computer.



8. Your computer will be booted directly in Safe Mode.

If the Vista login screen appears, log in to your computer and proceed to check and fix the error.

9. Once done, stay in Safe Mode, enter **msconfig** to open System Configuration.

10. On the System Configuration window, click the **General** tab. Here you select the **Normal Startup** option .

11. Select **Apply** and then click **OK** .

12. Restart your computer to return to normal mode.

6. Windows 7

Refer to the steps to start Windows 7 in Safe Mode here.

7. Windows 8

Refer to the steps to start Windows 8 in Safe Mode here.

8. Windows 10

Refer to the steps to start Windows 10 in Safe Mode here.

Refer to some of the following articles:

1. **Start Windows 7, 8, 10 in Safe Mode without F8 key**

2. **How to start Windows 10 in Safe Mode**

3. **How to use Command Prompt to manage wireless networks on Windows 10?**

Good luck!

You finished reading the article "**All problems with starting Windows in Safe Mode**" edited by the [TipsMake](#) team. We hope this article has provided you with many useful tech tips and tricks. You can search for similar articles on tips and guides. Thank you for reading and for following us regularly.