

Instructions for testing AI models installed on Windows 11

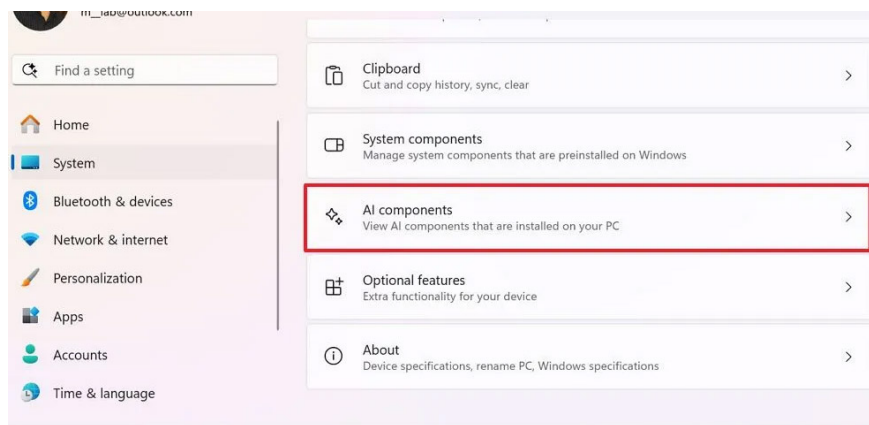
If you're a developer, Admin, or Windows 11 administrator, knowing which AI models are installed has some definite benefits.

Windows 11 leverages AI models to deliver useful features to users like Windows Recall, Click to Do, Semantic Indexing, and Auto Super Resolution. If you are a developer, Admin, or Windows 11 administrator, knowing which AI models are installed can be beneficial. Here is a guide to checking the AI models installed on Windows 11.

How to test AI models installed on Windows 11

Step 1:

Press **Windows + I** to open **Settings** on your computer. Then click on **System** and look to the right and select **AI components**.



Step 2:

Next, users will see a **list of AI models** installed on your Windows computer.

AI Content Extraction: Identify and extract specific information (such as text and objects) from various types of content, such as documents, images, and other files.

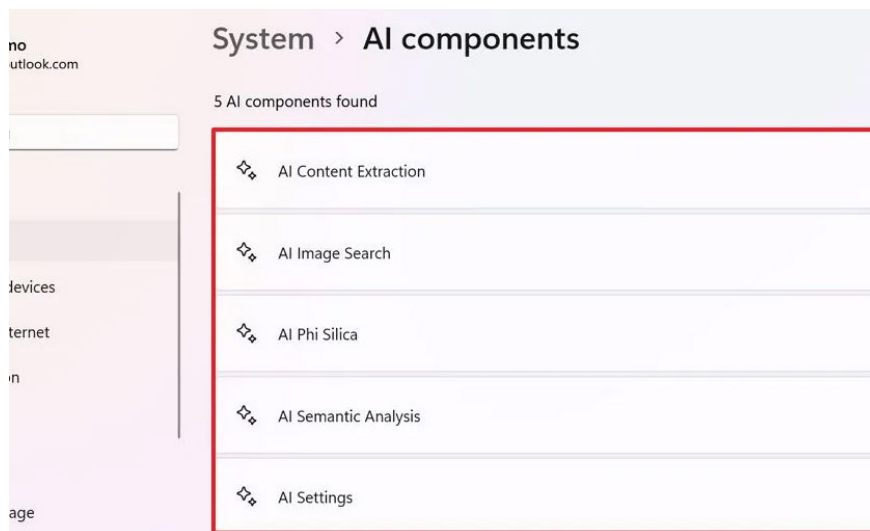
AI Image Search: Using AI to Search Images Based on Content

AI Phi Silia: This is a small language model (SLM) developed by Microsoft, specifically optimized to run efficiently on the PC Copilot+ neural processing unit (NPU), designed for tasks that require understanding and

generating language.

AI Semantic Analysis: This is related to Semantic Indexing which enables AI to understand the meaning and context behind the information users enter, especially in search queries.

AI Settings: AI search capability is available in Settings.



You finished reading the article "**Instructions for testing AI models installed on Windows 11**" edited by the [TipsMake](#) team. We hope this article has provided you with many useful tech tips and tricks. You can search for similar articles on tips and guides. Thank you for reading and for following us regularly.