

# Aggregate Godzilla photo location in PUBG Mobile

These Godzilla photo areas in PUBG Mobile, you will have the option of easy access but great fighting or difficult access but low fighting

Godzilla: King of Monster is a movie project that will be collaborated by PUBG Mobile after the zombie Resident Evil event. Unlike zombie mode, you will have to fight aggressive zombies with Godzilla, you just need to look for Godzilla on the wall or floor to get attractive prizes.

And many gamers don't know where Godzilla is on the map. These Godzilla figures are scattered but easy to find because they are large and not in sight. Note that they only appear on Miramar map, below is the location of Godzilla image in PUBG Mobile.

1. How to duplicate BP in PUBG Mobile with X2 card
2. Areas where pets appear in PUBG Mobile
3. PUBG Mobile: How to change Vietnamese dresses

## Godzilla photo location in PUBG Mobile

### 1. Island near Impala

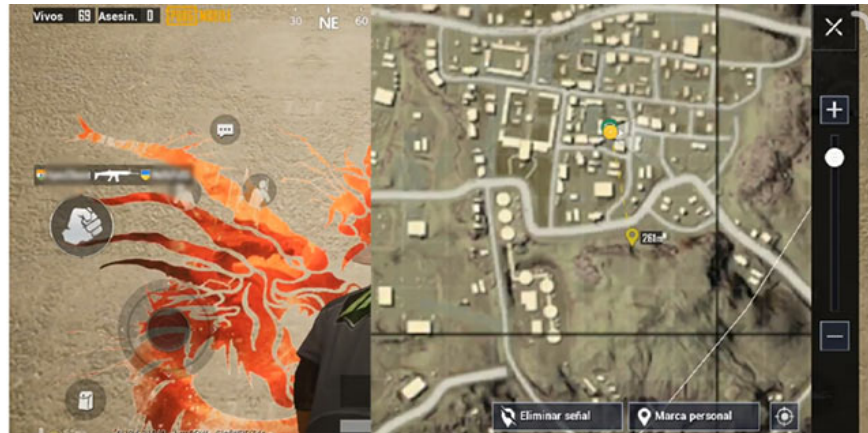


The first location of Godzilla in PUBG Mobile is located on an island near Impala, which is three islands lying on the right side of the Impala area. Here in the middle island you will find a picture of Godzilla painted on the wall.

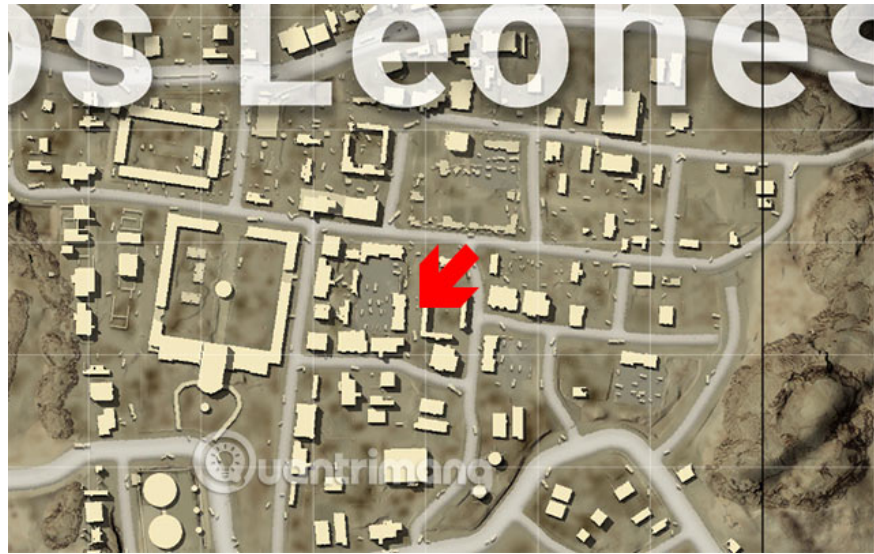


More specifically, it is located in the middle of two buildings as shown above. If the flight route is near this area, you can parachute and find Godzilla. If the flight does not fly near this area, then you will have to work very hard to find out here. So if you see the route too far for you to parachute down here, you can skip and wait for another opportunity.

## 2. In Los Leones center



The second place is in the Los Leones area, which is located in the center of this "populated" area. In this area, the image is painted on a wall outside a half-finished building, but this is a picture of **King Ghidorah**'s three-headed dragon, not Godzilla as in Impala.



This position is easy, no matter which route the plane will cross, so you can access this location without any movement problems. But you will have trouble with other enemies before you can walk here. Because without the Godzilla image, this area was already crowded with people.

### 3. Prison



Another "remote" area appears Godzilla PUBG Mobile. Prison is probably no stranger to many people when this is the waiting area before entering the game. However, the number of people landing here is very small because it is quite far from the center, if boasting about one of the two map corners above, the running will be quite hard.



But this is one of three areas where Godzilla images appear on the Miramar map. The way to find Godzilla here is not too difficult when it is printed on the roof of the largest building there. If you don't know where to find it, just go to the highest area to see and you'll see the image of Mothra.

These three Godzilla PUBG Mobile photo locations are not easy to get. You should prioritize which areas have crossing routes to land down. Los Leones is in the center so it is not too difficult to approach, only to be afraid of surrounding enemies. Prison and the island near the Impala are a bit difficult to move to, but they are likely to have fewer players than Los Leones.

You finished reading the article "**Aggregate Godzilla photo location in PUBG Mobile**" edited by the [TipsMake](#) team. We hope this article has provided you with many useful tech tips and tricks. You can search for similar articles on tips and guides. Thank you for reading and for following us regularly.